

Data Compilation INDEX

1. Outline of Japan Post Holdings Co., Ltd.		6. Japan Post Group Companies —Consolidated Financial Data	
1. Company Outline	92	CONSOLIDATED BALANCE SHEETS	108
2. Information on Shares	92	CONSOLIDATED STATEMENTS OF INCOME.....	110
3. Number of Employees	92	CONSOLIDATED STATEMENTS OF COMPREHENSIVE INCOME.....	110
4. List of Directors, Executive Officers, and Management Committees.....	93	CONSOLIDATED STATEMENTS OF CHANGES IN NET ASSETS	111
5. Organization Chart.....	94	CONSOLIDATED STATEMENTS OF CASH FLOWS.....	114
6. Principal Subsidiaries and Affiliates of Japan Post Holdings Co., Ltd.	95	NOTES TO CONSOLIDATED FINANCIAL STATEMENTS	116
2. Outline of Japan Post Co., Ltd.		Capital Adequacy	155
1. Company Outline	97	Qualitative Disclosure.....	157
2. Management Philosophy	97	Quantitative Disclosure.....	160
3. Information on Shares	97	Compensation, etc., Subject to Disclosure.....	169
4. Number of Employees	97	Consolidated Solvency Margin Ratio (Japan Post Group).....	171
5. List of Directors, Audit and Supervisory Board Members, and Executive Officers.....	98	Non-consolidated Solvency Margin Ratio (Japan Post Insurance Co., Ltd.).....	172
6. Organization Chart.....	99	7. Japan Post Group Privacy Policy	
3. Outline of Japan Post Bank Co., Ltd.		1. Japan Post Group Privacy Policy.....	173
1. Company Outline	100	2. Sharing of Personal Data among Japan Post Group Companies.....	174
2. Management Philosophy	100	8. Japan Post Group's Approach to Procurement Activity	
3. Information on Shares	100	Japan Post Group's Approach to Procurement Activity	174
4. Number of Employees	100	9. Japan Post Group Conflicts of Interest Management Policy	
5. List of Directors, Executive Officers, and Management Committees.....	101	Japan Post Group Conflicts of Interest Management Policy	175
6. Organization Chart.....	102	10. Declaration by Top Management Regarding the Elimination of Relationships with Antisocial Forces	
4. Outline of Japan Post Insurance Co., Ltd.		Declaration by Top Management regarding the Elimination of Relationships with Antisocial Forces...	175
1. Company Outline	103	11. Japan Post Group Information Security Declaration	
2. Management Philosophy and Management Policy...	103	Japan Post Group Information Security Declaration.....	176
3. Information on Stocks	103	12. Japan Post Group Executive Declaration on Cyber Security	
4. Number of Employees	103	Japan Post Group Executive Declaration on Cyber Security	176
5. List of Directors, Executive Officers, and Management Committees.....	104	13. Disclosure Policy	
6. Organization Chart.....	105	Disclosure Policy	177
5. Transition of Significant Management Indicators, etc.			
Japan Post Group (Consolidated).....	106		
Japan Post Holdings (Non-consolidated)	106		
Japan Post (Consolidated).....	106		
Postal and domestic logistics business segment (Consolidated)	107		
Post office business segment (Consolidated)	107		
International logistics business segment (Consolidated).....	107		
Japan Post Bank (Consolidated).....	107		
Japan Post Insurance (Consolidated)	107		

① Company Outline

Company name (in Japanese):	Nippon Yusei Kabushiki Kaisha
Company name:	JAPAN POST HOLDINGS Co., Ltd.
Head office location:	3-1, Otemachi 2-chome, Chiyoda-ku, Tokyo 100-8791, Japan
Telephone:	03-3477-0111 (Japan Post Group main number)
Paid-in capital:	¥3,500 billion
Date of establishment:	January 23, 2006
Legal basis:	Established under the Japan Post Holdings Co., Ltd. Act (Law No. 98 of October 21, 2005)
Lines of business:	Strategy formulation of Group management

② Information on Shares

(As of March 31, 2020)

1. Number of Shares

Total number of authorized shares	18,000,000,000
Total number of issued shares	4,500,000,000
Total number of shareholders	625,089

2. Major Shareholders

	Capital contribution to the company	
	Number of shares held	Shareholding ratio
Minister of Finance	2,559,524,700	63.29
The Master Trust Bank of Japan, Ltd. (Trust Account)	110,550,000	2.73
Japan Post Holdings Employee Shareholding Association	68,417,800	1.69
Japan Trustee Services Bank, Ltd. (Trust Account)	65,736,600	1.62
STATE STREET BANK WEST CLIENT - TREATY 505234	37,593,729	0.92
Japan Trustee Services Bank, Ltd. (Trust Account 5)	31,900,000	0.78
Japan Trustee Services Bank, Ltd. (Trust Account 9)	30,066,900	0.74
SMBC Nikko Securities Inc.	24,264,800	0.60
JP MORGAN CHASE BANK 385151	23,119,848	0.57
JAPAN SECURITIES FINANCE CO., LTD.	22,128,200	0.54

Note 1: Japan Post Holdings holds 456,139,201 shares of treasury stock, which are not included in the above list of major shareholders.

Note 2: The shareholding ratio is calculated by deducting treasury stock from the total number of issued shares.

3. Matters Concerning Stock Acquisition Rights

None.

③ Number of Employees

2,031 (as of March 31, 2020)

* The number of employees excludes employees assigned to other companies by Japan Post Holdings but includes employees assigned to Japan Post Holdings by other companies. The figure does not include part-time employees (including the indefinite-term employees (associates) based on the indefinite-term employment conversion system).

④ List of Directors, Executive Officers, and Management Committees

(As of July 1, 2020)

1. Directors

Director and Representative Executive Officer, President & CEO	MASUDA Hiroya (Concurrently holds the positions of Director of Japan Post Co., Ltd., Director of Japan Post Bank Co., Ltd., and Director of Japan Post Insurance Co., Ltd.)
Director	IKEDA Norito (Concurrently holds the position of Director, President and Representative Executive Officer of Japan Post Bank Co., Ltd.)
Director	KINUGAWA Kazuhide (Concurrently holds the position of President & CEO (Representative Executive Officer) of Japan Post Co., Ltd.)
Director	SENDA Tetsuya (Concurrently holds the position of Director and President, CEO, Representative Executive Officer of Japan Post Insurance Co., Ltd.)
Director (Outside)	MIMURA Akio (Concurrently holds the position of Honorary Chairman of NIPPON STEEL CORPORATION)
Director (Outside)	ISHIHARA Kunio (Concurrently holds the position of Senior Advisor to the Board of Tokio Marine & Nichido Fire Insurance Co., Ltd.)
Director (Outside)	Charles Ditmars Lake II (Concurrently holds the position of Chairman and Representative Director of Aflac Life Insurance Japan Ltd.)
Director (Outside)	HIRONO Michiko
Director (Outside)	OKAMOTO Tsuyoshi (Concurrently holds the position of Senior Corporate Advisor to Tokyo Gas Co., Ltd.)
Director (Outside)	KOEZUKA Miharu (Concurrently holds the position of Counselor to Takashimaya Company Limited)
Director (Outside)	AKIYAMA Sakie (Concurrently holds the position of Founder (Advisor) of Saki Corporation)
Director (Outside)	KAIAMI Makoto (Attorney)
Director (Outside)	SATAKE Akira

2. Executive Officers (Excludes persons with concurrent posts in the above 1. Directors)

Representative Executive Officer, Executive Vice President	KOMATSU Toshihide	Managing Executive Officer	YONEZAWA Tomohiro
Representative Executive Officer, Executive Vice President	IWASAKI Yoshifumi	Managing Executive Officer	ISAYAMA Chikashi
Senior Managing Executive Officer	TANIGAKI Kunio	Managing Executive Officer	TANAKA Susumu
Senior Managing Executive Officer	INASAWA Toru	Executive Officer	ICHIKURA Noboru
Senior Managing Executive Officer	IIZUKA Atsushi	Executive Officer	SAKURAI Makoto
Senior Managing Executive Officer	KAWAMOTO Hiroaki	Executive Officer	SHOMURA Tsutomu
Managing Executive Officer	FUKUMOTO Kenji	Executive Officer	IZUMI Mamiko
Managing Executive Officer	OKU Kimihiko	Executive Officer	OTAKA Kozo
Managing Executive Officer	OGATA Kenji	Executive Officer	TSURUDA Nobuo
Managing Executive Officer	FURUSATO Hiroyuki	Executive Officer	KAZAMATSURI Makoto
Managing Executive Officer	SHIMA Toshitaka	Executive Officer	MEGURO Kenji
Managing Executive Officer	KINOSHITA Noriko	Executive Officer	ASAI Tomonori
Managing Executive Officer	KOZUKA Kenichi	Executive Officer	YOKOYAMA Akihiko
Managing Executive Officer	HAYASHI Toshiyuki	Executive Officer	KAWANO Youichi
			ASAMI Kanako

3. Nomination Committee

MIMURA Akio (Chair)
ISHIHARA Kunio
OKAMOTO Tsuyoshi
MASUDA Hiroya

4. Audit Committee

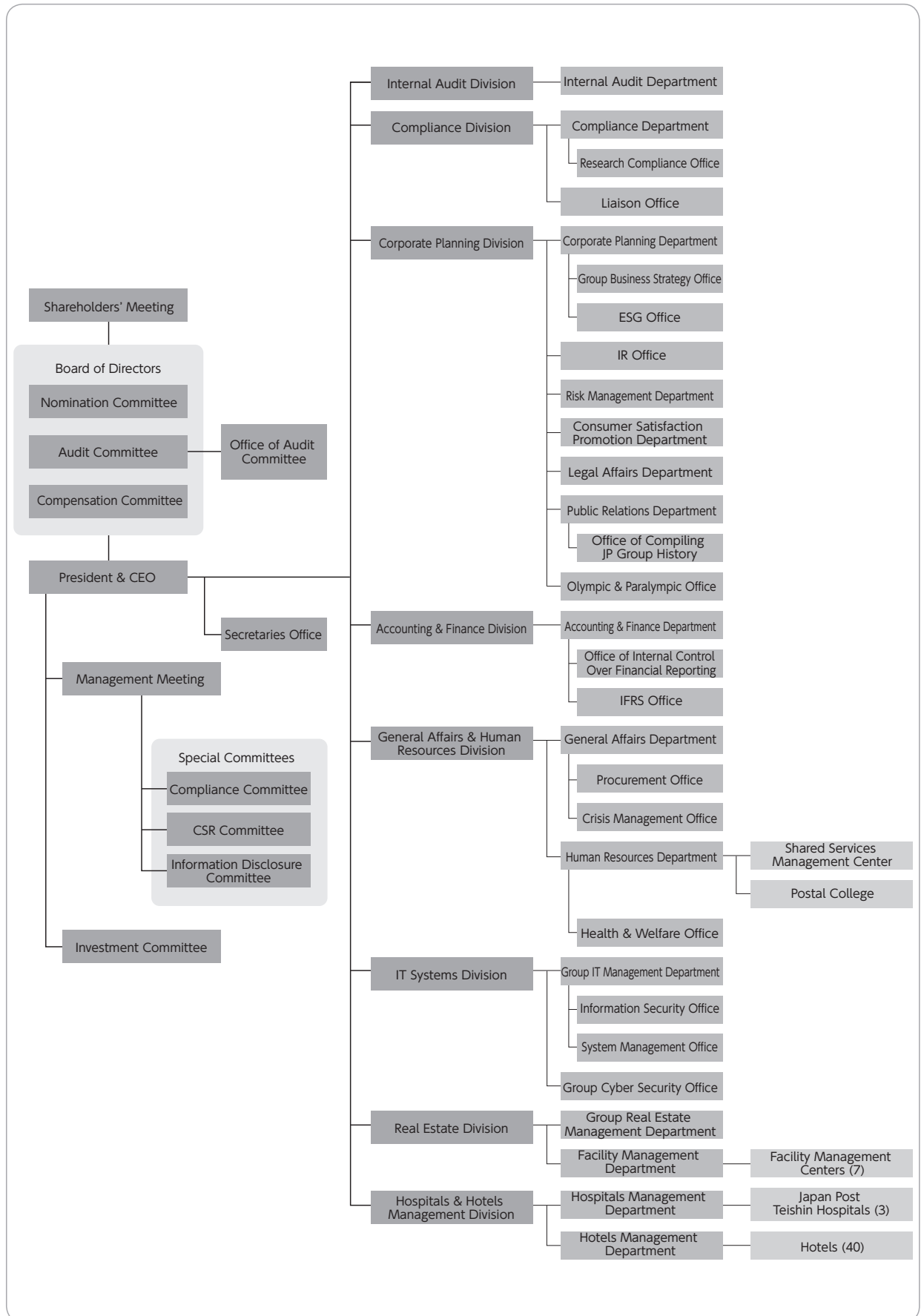
SATAKE Akira (Chair)
KOEZUKA Miharu
KAIAMI Makoto

5. Compensation Committee

OKAMOTO Tsuyoshi (Chair)
ISHIHARA Kunio
MASUDA Hiroya

5 Organization Chart

(As of April 1, 2020)



⑥ Principal Subsidiaries and Affiliates of Japan Post Holdings Co., Ltd.

(As of March 31, 2020)

Affiliation	Company name	Location	Issued capital (Millions)	Main business	Date of establishment	Percentage ownership of voting rights
Consolidated subsidiaries	JAPAN POST Co., Ltd.	Chiyoda-ku, Tokyo	¥400,000	Postal and domestic logistics business, post office business	October 1, 2007	100.0%
	Japan Post Transport Co., Ltd.	Minato-ku, Tokyo	¥18,250	Postal and domestic logistics business (truck cargo transportation)	November 30, 2007	100.0% (100.0%)
	JAPAN POST MAINTENANCE Co., Ltd.	Koto-ku, Tokyo	¥50	Postal and domestic logistics business (automobile maintenance and machinery maintenance business, product sales business, vehicle maintenance and management business)	March 31, 1991	100.0% (100.0%)
	JP Biz Mail Co., Ltd.	Adachi-ku, Tokyo	¥100	Postal and domestic logistics business (preparation and posting of postal items)	February 1, 2006	58.5% (58.5%)
	JP Media Direct Co., Ltd.	Minato-ku, Tokyo	¥300	Postal and domestic logistics business (planning, development, and sales of direct mail and contracted shipment of merchandise)	February 29, 2008	51.0% (51.0%)
	Tokyo Beiyu Co., Ltd.	Meguro-ku, Tokyo	¥22	Postal and domestic logistics business (petroleum sales business)	March 10, 1949	79.8% (79.8%)
	Japan Post Trading Service Co., Ltd.	Koto-ku, Tokyo	¥100	Post office business (merchandise business, contracting business for merchandise operations)	September 11, 2007	100.0% (100.0%)
	Japan Post Building Management Co., Ltd.	Chiyoda-ku, Tokyo	¥150	Post office business (property management for commercial buildings)	April 1, 2011	100.0% (100.0%)
	Japan Post Communications Co., Ltd.	Minato-ku, Tokyo	¥350	Post office business (operations related to posting advertisements in post offices)	August 8, 2014	100.0% (100.0%)
	JAPAN POST OFFICE SUPPORT Co., Ltd.	Minato-ku, Tokyo	¥100	Post office business (merchandise sales, facilities management, and contracting business)	March 16, 1971	100.0% (100.0%)
	JP GENERAL INSURANCE AGENCY Co., Ltd.	Chiyoda-ku, Tokyo	¥20	Post office business (non-life insurance and automobile liability insurance agency business)	August 7, 1950	70.0% (70.0%)
	YY Gift Co., Ltd.	Nishi-ku, Yokohama-shi, Kanagawa	¥20	Post office business (sales of catalog products, mail-order business, agency business for sales of alcohol)	April 23, 1996	51.0% (51.0%)
	JP TOKYO TOKUSENKAI Co., Ltd.	Taito-ku, Tokyo	¥30	Post office business (sales of catalog products, mail-order business)	March 2, 2015	51.0% (51.0%)
	Toll Holdings Limited	Melbourne, Australia	AUD2,978	International logistics business (forwarding business, 3PL business, express business)	June 20, 1986	100.0% (100.0%)
	JP TOLL LOGISTICS, Co., Ltd.	Chiyoda-ku, Tokyo	¥100	International logistics business (Forwarding business, 3PL business)	September 16, 2009	100.0% (100.0%)
	TOLL EXPRESS JAPAN CO., LTD.	Ibaraki-shi, Osaka	¥10	International logistics business (express business)	January 29, 2002	100.0% (100.0%)
	JAPAN POST BANK Co., Ltd.	Chiyoda-ku, Tokyo	¥3,500,000	Banking business	September 1, 2006	89.0%
	SDP Center Co., Ltd.	Chuo-ku, Tokyo	¥2,000	Banking business (agency operations for personal loans, etc.)	May 28, 1980	100.0% (100.0%)
	Japan Post Investment Corporation	Chiyoda-ku, Tokyo	¥750	Banking business (securities investment management business)	February 9, 2018	75.0% (75.0%) [25.0%]
	JAPAN POST INSURANCE Co., Ltd.	Chiyoda-ku, Tokyo	¥500,000	Life insurance business	September 1, 2006	64.5%
	JAPAN POST INSURANCE SYSTEM SOLUTIONS Co., Ltd.	Shinagawa-ku, Tokyo	¥500	Life insurance businesses (commissioning of design, development, maintenance and operation of information systems)	March 8, 1985	100.0% (100.0%)
	JAPAN POST STAFF Co., Ltd.	Minato-ku, Tokyo	¥640	Other businesses (temporary staffing service, contracted business)	July 3, 2007	100.0%
	YUSEI CHALLENGED CO., Ltd.	Setagaya-ku, Tokyo	¥5	Other businesses (office cleaning)	November 20, 2007	100.0%
Japan Post Hotel Service Co., Ltd.	Chuo-ku, Saitama-shi, Saitama	¥39	Other businesses (contracted hotel management)	December 25, 1996	100.0%	

Affiliation	Company name	Location	Issued capital (Millions)	Main business	Date of establishment	Percentage ownership of voting rights
Consolidated subsidiaries	Japan Post Information Technology Co., Ltd.	Shinjuku-ku, Tokyo	¥3,150	Other businesses (communication network maintenance and management)	January 30, 1987	100.0%
	Japan Post Capital Co., Ltd.	Chiyoda-ku, Tokyo	¥1,500	Other businesses (investment business, consulting business for management and financial matters)	November 1, 2017	100.0%
	Japan Post Real Estate Co., Ltd.	Chiyoda-ku, Tokyo	¥1,500	Other businesses (ownership, leasing and management business of real estate, development business of residential and commercial land, etc.)	April 2, 2018	100.0%
	System Trust Laboratory Co., Ltd.	Shinagawa-ku, Tokyo	¥99	Other businesses (consulting, planning and development business for business systems and basic technologies)	August 1, 1989	100.0% (100.0%)
	JP TWOWAY CONTACT Co., Ltd.	Nishi-ku, Osaka-shi, Osaka	¥182	Other businesses (telemarketing services)	April 18, 1988	82.9% (82.9%)
	and 231 other companies					
Affiliated companies accounted for under the equity method	SAISON ASSET MANAGEMENT Co., Ltd.	Toshima-ku, Tokyo	¥1,000	Post office business (type II financial instruments business operation and investment trust management business, others)	June 12, 2006	40.0% (40.0%)
	JA FOODS OITA CO., LTD.	Kitsuki-shi, Oita	¥493	Post office business (processing and sales of agricultural products, fruits, and vegetables)	December 2, 1991	20.0% (20.0%)
	RINGBELL Co., Ltd.	Chuo-ku, Tokyo	¥354	Post office business (planning, production and sales of gift catalogs, others)	July 3, 1987	20.0% (20.0%)
	JP Asset Management Co., Ltd.	Chuo-ku, Tokyo	¥500	Banking business (type II financial instruments business operation and investment management business)	August 18, 2015	50.0% (50.0%)
	ATM Japan Business Service, Ltd.	Minato-ku, Tokyo	¥100	Banking business (ATM cash loading and collection as well as ATM management)	August 30, 2012	35.0% (35.0%)
	and 12 other companies					

Note 1: In the Main business column, besides the segment names, a summary of the businesses carried out by the concerned companies is included within the parentheses.

Note 2: Among the affiliated companies listed above, Japan Post, Japan Post Bank, Japan Post Insurance, and Japan Post Information Technology correspond to specified subsidiary.

Note 3: Among the affiliated companies listed above, Japan Post Bank and Japan Post Insurance submit securities reports.

Note 4: The figures in parentheses in the column showing percentage ownership of voting rights indicate the percentage of indirect ownership (within parentheses) through subsidiaries. The figures in brackets indicate "Those parties deemed to exercise voting rights for the same details as their own intentions because of the close relationships between themselves and investments, personnel, capital, technologies, business transactions, etc." or "Those parties that agree to exercise voting rights for the same details as their own intentions" (outside the parentheses).

Note 5: Among the affiliated companies listed above, the ordinary income (excluding intercompany ordinary income of consolidated companies) of Japan Post, Japan Post Bank, and Japan Post Insurance exceeded 10% of consolidated ordinary income. Information on principal profits and losses of Japan Post is detailed below. Information on Japan Post Bank and Japan Post Insurance is omitted because these companies submit securities reports.

Name	Principal information on profits and losses (Millions of yen)				
	Operating income	Ordinary income	Net income	Net assets	Total assets
Japan Post	¥ 3,094,375	¥ 188,424	¥ 73,312	¥ 678,100	¥ 4,541,168

Note 6: SDP Center Co., Ltd. changed its trade name to JAPAN POST BANK Loan Center Co., Ltd. as of April 1, 2020.

① Company Outline

Company name (in Japanese):	Nippon Yubin Kabushiki Kaisha
Company name:	JAPAN POST Co., Ltd.
Head office location:	3-1, Otemachi 2-chome, Chiyoda-ku, Tokyo 100-8792, Japan
Telephone:	03-3477-0111 (Japan Post Group main number)
Paid-in capital:	¥400 billion
Date of establishment:	October 1, 2007
Legal basis:	Established under the Japan Post Co., Ltd. Act (Law No. 100 of October 21, 2005)
Lines of business:	Postal operations; banking counter operations; insurance counter operations; sales of documentary stamps; operations consigned by local government entities; bank and life and non-life insurance agency services other than those mentioned previously; domestic distribution and delivery business and international cargo transport and agency services for air cargo business; logistics business; real estate business; and merchandise sales

② Management Philosophy

Management Philosophy

"Japan Post Co., Ltd. will fully utilize its resources that include its post office and delivery networks covering every corner of the country to provide safe, reliable and fast services tailored to the needs of each community while contributing to the realization of a society with an abundance of human contact by supporting people's lifestyles throughout their entire lives."

- We will provide the basic postal services of postal, banking and insurance services extensively across the country into the future.
- We will take on the challenge of providing innovative services that respond accurately to changes in society and enrich people's lives.
- We will fulfill our responsibilities as a corporate citizen by establishing corporate governance systems and strictly implementing compliance.
- Each and every employee will continue to grow to ensure we are appreciated by our customers and trusted and respected by local communities.

③ Information on Shares

(As of March 31, 2020)

1. Number of Shares

Total shares issued	10,000,000
---------------------	------------

2. Shareholder

Japan Post Holdings Co., Ltd.	Condition of holdings	
	Shares owned	Percentage of total issued
	10,000,000	100%

④ Number of Employees

193,257* (as of March 31, 2020)

* The number of employees excludes employees assigned to other companies by Japan Post but includes employees assigned to Japan Post by other companies. The figure does not include part-time employees (including the indefinite-term employees (associates) based on the indefinite-term employment conversion system).

5 List of Directors, Audit and Supervisory Board Members, and Executive Officers

(As of July 1, 2020)

1. Directors

President & CEO (Representative Executive Officer).....	KINUGAWA Kazuhide	(Concurrently holds the position of Director of Japan Post Holdings Co., Ltd.)
Senior Executive Vice President (Representative Director).....	YONEZAWA Tomohiro	(Concurrently holds the position of Managing Executive Officer of Japan Post Holdings Co., Ltd.)
Executive Vice President (Director)	ISAYAMA Chikashi	(Concurrently holds the position of Managing Executive Officers of Japan Post Holdings Co., Ltd.)
Director	MASUDA Hiroya	(Concurrently holds the position of Director and President, CEO Representative Executive Officer of Japan Post Holdings Co., Ltd.)
Director (Outside)	TANAKA Risa	(Concurrently holds the position of President of The Graduate School of Project Design and Director of Media and Information of Sendenkaigi Co., Ltd.)
Director (Outside)	SASAKI Kaori	(Concurrently holds the position of President and CEO of ewoman, Inc.)
Director (Outside)	SUWA Takako	(Concurrently holds the position of Representative Director of Daiya Seiki Co. Ltd.)
Director (Outside)	TAKABE Toyohiko	(Formerly held the position of Representative Director and President of Nippon Telegraph and Telephone East Corporation)
Director (Outside)	NOKINA Akira	(Concurrently holds the position of Representative Director and Chairman of North Pacific Securities Co., Ltd.)
Director (Outside)	MATSUDA Yozo	(Concurrently holds the position of President and Representative Director of CHUOKORON-SHINSHA, INC.)

2. Audit and Supervisory Board Members

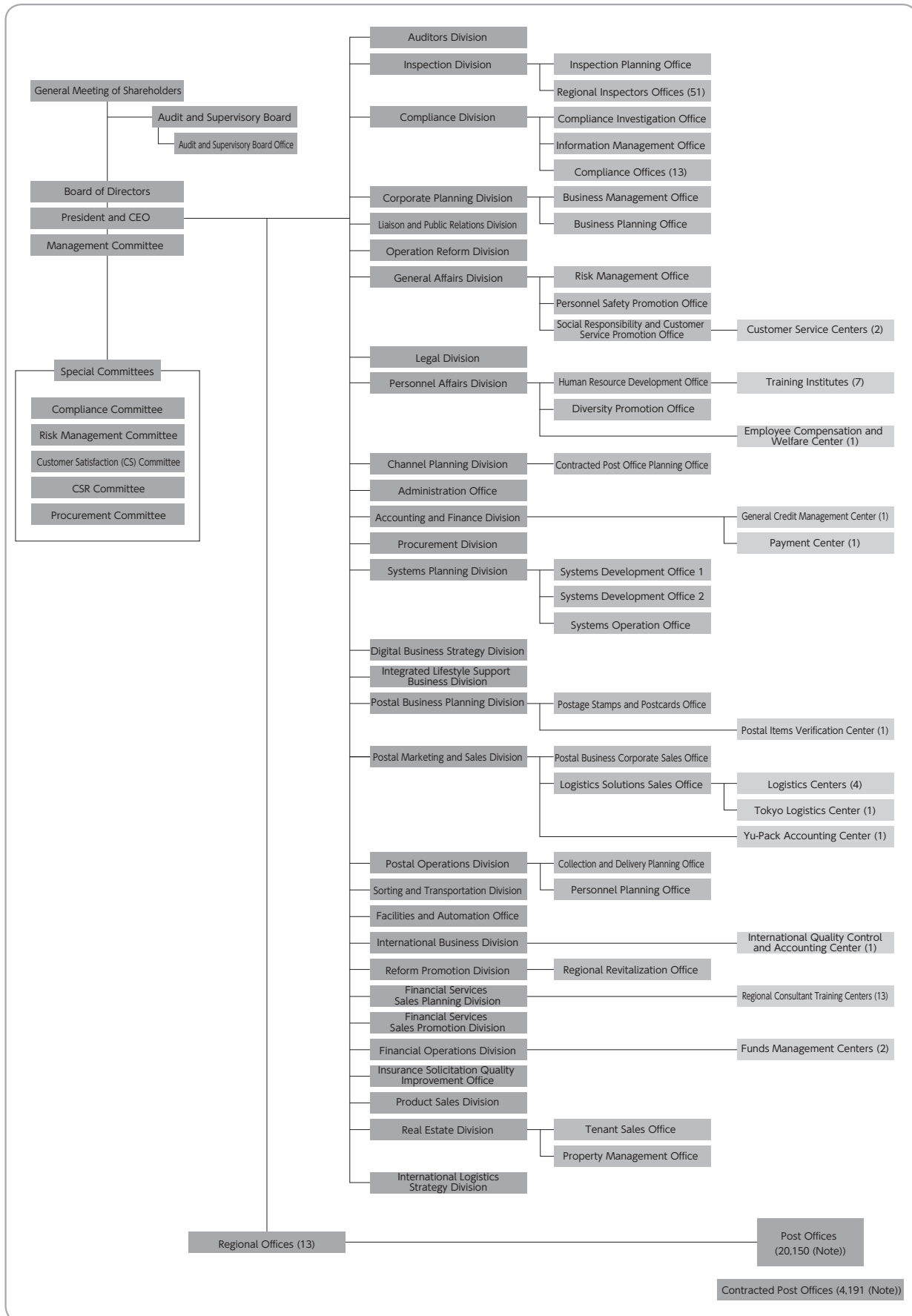
YAMAMOTO Mitsuyuki
TAKANO Toshiyuki
SHIDEHARA Hiroshi
OGURO Masayasu

3. Executive Officers

First Executive Officer	ONO Taneki	Executive Officer	ARAWAKA Hitoshi
First Executive Officer	SUZUKI Yoshinori	Executive Officer	METOKI Masahiko
First Executive Officer	HIGUCHI Yoshiyuki	Executive Officer	FUCHIE Atsushi
Senior Executive Officer	TATEBAYASHI Satoru	Executive Officer	ASAMI Kanako
Senior Executive Officer	WAKASA Norio	(Concurrently holds the position of Executive Officer of Japan Post Holdings Co., Ltd.)	
Senior Executive Officer	HIGASHIKOZONO Satoshi	Executive Officer	KAMIOZAKI Koji
Senior Executive Officer	SANO Kimikazu	Executive Officer	YAMAZAKI Katsuyo
Senior Executive Officer	KANEKO Michio	Executive Officer	NISHIGUCHI Akihito
Senior Executive Officer	NEGISHI Kazuyuki	Executive Officer	YASUDA Hiroaki
Senior Executive Officer	YAMAZAKI Masaaki	Executive Officer	TAKAHASHI Yasuhiro
		Executive Officer	HASEGAWA Atsushi
		Executive Officer	KOIKE Shinya
		Executive Officer	OGAWA Masato
		Executive Officer	DENISHI Shinji
		Executive Officer	NAKAI Katsunori
		Executive Officer	NAMIKI Tsukasa
		Executive Officer	URASE Takayuki
		Executive Officer	ISOHATA Akihiko
		Executive Officer	SAKATA Hiroshi
		Executive Officer	TANAKA Yutaka
		Executive Officer	MITOMA Norimasa
		Executive Officer	YOKOYAMA Akihiko
		(Concurrently holds the position of Executive Officer of Japan Post Holdings Co., Ltd.)	

6 Organization Chart

(As of April 1, 2020)



Note: The number of directly managed post offices and contracted post offices is as of March 31, 2020.

① Company Outline

Company name (in Japanese):	Kabushiki Kaisha Yucho Ginko
Company name:	JAPAN POST BANK Co., Ltd.
Head office location:	3-1, Otemachi 2-chome, Chiyoda-ku, Tokyo 100-8793, Japan
Telephone:	03-3477-0111 (Japan Post Group main number)
Paid-in capital:	¥3,500 billion
Date of establishment:	September 1, 2006 (On October 1, 2007, the name was changed from Yucho Co., Ltd. to Japan Post Bank Co., Ltd.)
Line of business:	Banking
Financial institution code number:	9900

② Management Philosophy

Management Philosophy

Japan Post Bank aims to become “the most accessible and trustworthy bank in Japan,” guided by the needs and expectations of our customers.

Trust:	We comply with laws, regulations, and other standards of behavior and value trusted relationships with customers, markets, shareholders, and employees and consistently serve as a responsible corporate citizen.
Innovation:	We work sincerely to improve our management and business operations in response to requests from customers and changes in the business environment.
Efficiency:	We pursue improvements in speed and efficiency of our management and business operations in order to provide customer-oriented financial instruments and services.
Expertise:	We continually strive to strengthen our expertise for the aim of services meeting the expectations of our customers.

③ Information on Shares

(As of March 31, 2020)

1. Number of Shares

Total shares issued	4,500,000,000
---------------------	---------------

2. Major Shareholders

		Shares owned (thousand)	Shareholding ratio (%)
1	Japan Post Holdings Co., Ltd.	3,337,032	88.99
2	The Master Trust Bank of Japan, Ltd. (Trust Account)	33,597	0.89
3	Japan Trustee Services Bank, Ltd. (Trust Account)	18,066	0.48
4	STATE STREET BANK WEST CLIENT - TREATY 505234	13,428	0.35
5	Japan Trustee Services Bank, Ltd. (Trust Account 9)	11,710	0.31
6	Japan Trustee Services Bank, Ltd. (Trust Account 5)	11,384	0.30
7	Japan Post Bank Employee Shareholding Association	9,237	0.24
8	STATE STREET BANK AND TRUST COMPANY 505103	6,094	0.16
9	Japan Trustee Services Bank, Ltd. (Trust Account 1)	5,823	0.15
10	Japan Trustee Services Bank, Ltd. (Trust Account 2)	5,279	0.14

Note 1: Japan Post Bank holds 750,524 thousand shares (the ratio of the number of shares held against the total number of shares issued is 16.67%) of treasury stock, which are not included in the above list of major shareholders. The treasury stock does not include the Bank's shares held by the stock benefit trust (682 thousand shares).

Note 2: The shares owned are figures with a fraction less than 1,000 shares rounded off.

Note 3: The shareholding ratio has been calculated excluding treasury stock (750,524 thousand shares) and rounded down to the second decimal place.

④ Number of Employees

12,477* (as of March 31, 2020)

* The number of employees excludes employees assigned to other companies by Japan Post Bank but includes employees assigned to Japan Post Bank by other companies. The figure does not include part-time employees (including the indefinite-term employees (associates) based on the indefinite-term employment conversion system).

5 List of Directors, Executive Officers, and Management Committees

(As of July 1, 2020)

1. Directors

President and Representative Executive Officer.....	IKEDA Norito	(Concurrently holds the position of Director of Japan Post Holdings Co., Ltd.)
Representative Executive Vice President.....	TANAKA Susumu	(Concurrently holds the position of Managing Executive Officer of Japan Post Holdings Co., Ltd.)
Director	MASUDA Hiroya	(Concurrently holds the position of Director and Representative Executive Officer, President & CEO of Japan Post Holdings Co., Ltd.)
Director	ONODERA Atsuko	
Outside Director	AKASHI Nobuko	(Concurrently holds the position of Board chairman of a non-profit organization, Japan Manners & Protocol Association)
Outside Director	IKEDA Katsuaki	(Formerly held the position of Corporate Auditor of MS&AD Insurance Group Holdings, Inc.)
Outside Director	CHUBACHI Ryoji	(Concurrently holds the position of Grand Emeritus Advisor, National Institute of Advanced Industrial Science and Technology)
Outside Director	TAKEUCHI Keisuke	(Formerly held the position of Principal Corporate Advisor of JGC HOLDINGS CORPORATION)
Outside Director	KAIWA Makoto	(Concurrently holds the position of Representative Director & Chairman of the Board of Tohoku Electric Power Co., Inc.)
Outside Director	AIHARA Risa	(Concurrently holds the position of Representative Director and President of Ai-LAND Co., Ltd.)
Outside Director	KAWAMURA Hiroshi	(Professor, Faculty of Law, Doshisha University)
Outside Director	YAMAMOTO Kenzo	(Concurrently holds the position of Representative of Office KY Initiative)

2. Executive Officers (Excludes persons with concurrent posts in the above 1. Directors)

Executive Vice President	HAGINO Yoshinori	Executive Officer	MAKINO Yoko
Senior Managing Executive Officer	MURASHIMA Masahiro	Executive Officer	AMAHA Kunihiko
Senior Managing Executive Officer	YANO Harumi	Executive Officer	OGATA Satoru
Senior Managing Executive Officer	KASAMA Takayuki	Executive Officer	ONO Toshiharu
Managing Executive Officer	NISHIMORI Masahiro	Executive Officer	NAGURA Shinobu
Managing Executive Officer	TAMAKI Masato	Executive Officer	YAMADA Ryotaro
Managing Executive Officer	KOTOUDA Minoru	Executive Officer	TSUKIOKA Haruchika
Managing Executive Officer	YAZAKI Toshiyuki	Executive Officer	NAKAO Hideki
Managing Executive Officer	TANAKA Takayuki	Executive Officer	KISHI Etsuko
Managing Executive Officer	SHINMURA Makoto	Executive Officer	IIMURA Koji
Managing Executive Officer	SAKURAI Shigeyuki	Executive Officer	TOUMA Masaya
Managing Executive Officer	FUKUOKA Nobuhiro		

3. Nomination Committee

Chairman	KAIWA Makoto
Member	CHUBACHI Ryoji
Member	TAKEUCHI Keisuke
Member	IKEDA Norito
Member	MASUDA Hiroya

4. Audit Committee

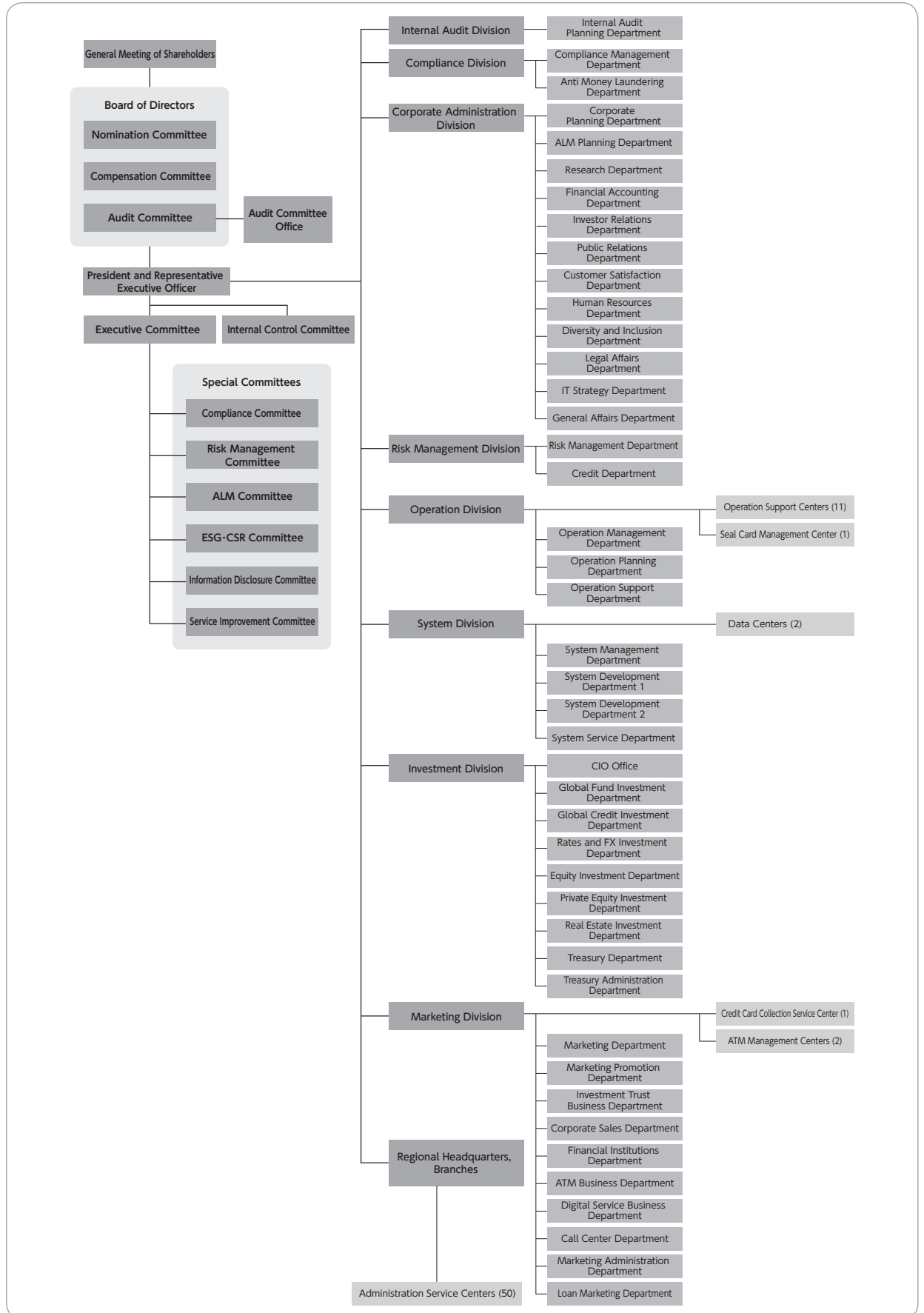
Chairman	IKEDA Katsuaki
Member	ONODERA Atsuko
Member	AKASHI Nobuko
Member	KAWAMURA Hiroshi
Member	YAMAMOTO Kenzo

5. Compensation Committee

Chairman	CHUBACHI Ryoji
Member	IKEDA Katsuaki
Member	TAKEUCHI Keisuke
Member	MASUDA Hiroya

6 Organization Chart

(As of July 1, 2020)



① Company Outline

Company name (in Japanese):	Kabushiki Kaisha Kanpo Seimei Hoken
Company name:	JAPAN POST INSURANCE Co., Ltd.
Head office location:	3-1, Otemachi 2-chome, Chiyoda-ku, Tokyo 100-8794, Japan
Telephone:	03-3477-0111 (Japan Post Group main number)
Paid-in capital:	¥500 billion
Date of establishment:	September 1, 2006 (The name of the company was changed from Kampo Co., Ltd. to Japan Post Insurance Co., Ltd., on October 1, 2007.)
Line of business:	Life insurance

② Management Philosophy and Management Policy

Management Philosophy

Be a trustful partner for people, always being close at hand and endeavoring to protect their well-being.

Management Policy

We aim to become the No.1 Japanese insurance company selected by customers.

1. We are always close to people's lives, offering easy-to-understand products and high-quality services.
2. We always ensure that employees who have contact with our customers make full use of their strengths to offer better customer services.
3. We create a working environment in which all employees can develop their talents and work with energy and vitality.
4. We practice sound management based on strong corporate governance, constantly creating new value to achieve sustainable growth.
5. We actively contribute to health promotion, environmental protection, and the development of local communities and society as a whole.
6. We work to communicate closely with all stakeholders.

③ Information on Stocks

(As of March 31, 2020)

1. Number of Stocks

Issued stocks	562,600,000
---------------	-------------

2. Major Shareholders

	Number of shares held and percentage of shares held	
	Number of shares held	Percentage of shares held
Japan Post Holdings Co., Ltd.	362,732,400	64.48%
Japan Trustee Services Bank, Ltd. (Trust Account)	8,273,200	1.47%
THE BANK OF NEW YORK - JASDECTREATY ACCOUNT	4,982,113	0.89%
The Master Trust Bank of Japan, Ltd. (Trust Account)	4,042,800	0.72%
Mitsubishi UFJ Morgan Stanley Securities Co., Ltd.	3,436,800	0.61%
NORTHERN TRUST GLOBAL SERVICES SE, LUXEMBOURG RE LUDURE: UCITS CLIENTS 15.315 PCT NON TREATY ACCOUNT	3,351,000	0.60%
STATE STREET BANK WEST CLIENT - TREATY 505234	3,227,300	0.57%
BNY GCM CLIENT ACCOUNT JPRD AC ISG (FE-AC)	3,112,760	0.55%
STATE STREET BANK AND TRUST COMPANY 505001	3,060,900	0.54%
JP MORGAN CHASE BANK 385151	2,918,527	0.52%

Note: Percentage of shares held is calculated excluding treasury stock (11,100 shares) and rounded to two decimal places. Treasury stock does not include the 166,900 shares of the Company's stock held in the Board Benefit Trust (BBT).

④ Number of Employees

7,638* (as of March 31, 2020)

* The number of employees excludes employees assigned to other companies by Japan Post Insurance but includes employees assigned to Japan Post Insurance by other companies. The figure does not include part-time employees (including the indefinite-term employees (associates) based on the indefinite-term employment conversion system).

5 List of Directors, Executive Officers, and Management Committees

(As of July 1, 2020)

1. Directors

Director and President, CEO, Representative Executive Officer	SENDA Tetsuya (Concurrently holds the position of Director of Japan Post Holdings Co., Ltd.)
Director and Deputy President, Representative Executive Officer	ICHIKURA Noboru (Concurrently holds the position of Managing Executive Officer of Japan Post Holdings Co., Ltd.)
Director	HORIGANE Masaaki
Director	MASUDA Hiroya (Concurrently holds the position of Director and Representative Executive Officer, President & CEO of Japan Post Holdings Co., Ltd.)
Outside Director	SUZUKI Masako (Concurrently holds the position of Senior Advisor of Pasona Group Inc.)
Outside Director	SAITO Tamotsu (Concurrently holds the position of Senior Counselor of IHI Corporation)
Outside Director	YAMADA Meyumi (Concurrently holds the position of Director of istyle Inc.)
Outside Director	HARADA Kazuyuki (Concurrently holds the position of President & Representative Director of Keikyu Corporation)
Outside Director	YAMAZAKI Hisashi (Attorney-at-law)

2. Executive Officers (Excludes persons holding concurrent posts in addition to the above. 1. Directors)

Senior Managing Executive Officer	HIRONAKA Yasuaki	Executive Officer	SAKAMOTO Hidekazu
Senior Managing Executive Officer	NARA Tomoaki	Executive Officer	YOKOYAMA Masamichi
Managing Executive Officer	TACHIBANA Atsushi	Executive Officer	IIDA Takashi
Managing Executive Officer	KATO Nobuyasu	Executive Officer	FUJII Shinsuke
Managing Executive Officer	UCHIKOBA Nobuatsu	Executive Officer	SAITO Hajime
Managing Executive Officer	SUZUKAWA Yasumi	Executive Officer	MIYAMOTO Susumu
Managing Executive Officer	MIYANISHI Yoshiki	Executive Officer	MURO Takashi
Managing Executive Officer	MATSUDA Michiko	Executive Officer	HARUNA Takayuki
Managing Executive Officer	ONOKI Kieko	Executive Officer	KUME Takeshi
Managing Executive Officer	KOIE Junko	Executive Officer	IMAIZUMI Michinori
Managing Executive Officer	TANAKA Motonori	Executive Officer	TAGUCHI Yoshihiro
Managing Executive Officer	ONISHI Toru	Executive Officer	MAETANI Isao
Managing Executive Officer	FUJIMORI Norihiro	Executive Officer	KUROSAKI Yoshiyuki

3. Nomination Committee

Chairman	HARADA Kazuyuki
Member	SENDA Tetsuya
Member	MASUDA Hiroya
Member	SAITO Tamotsu
Member	YAMADA Meyumi

4. Audit Committee

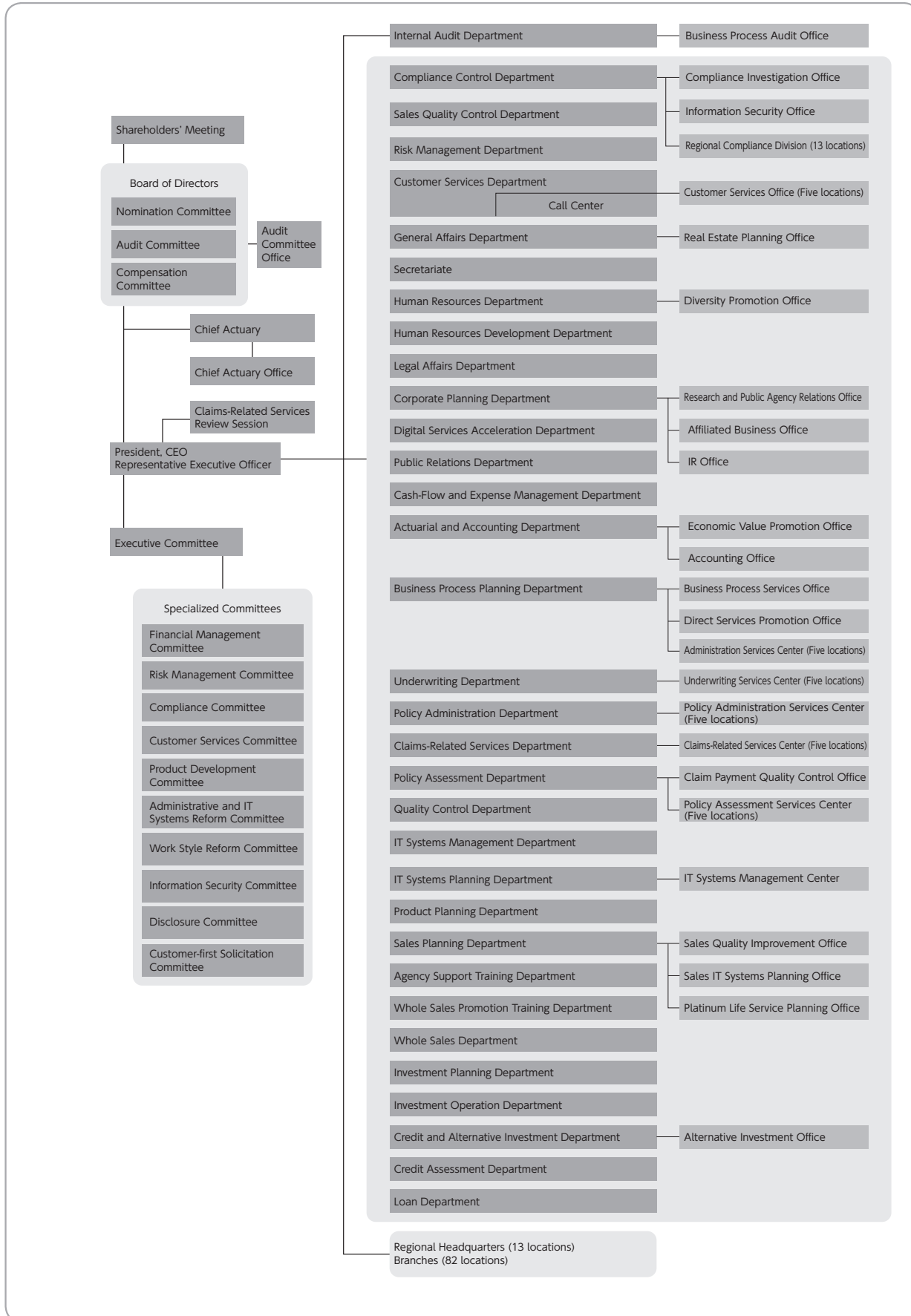
Chairman	SAITO Tamotsu
Member	HORIGANE Masaaki
Member	SUZUKI Masako
Member	YAMADA Meyumi
Member	YAMAZAKI Hisashi

5. Compensation Committee

Chairman	SUZUKI Masako
Member	MASUDA Hiroya
Member	HARADA Kazuyuki

6 Organization Chart

(As of April 1, 2020)



Enhancing Corporate Value

Value Creation Strategy

Sustainability

Corporate Governance

Data Compilation