

① Company Outline

| | |
|-----------------------------|--|
| Company name (in Japanese): | Nippon Yusei Kabushiki Kaisha |
| Company name: | JAPAN POST HOLDINGS Co., Ltd. |
| Head office location: | 3-1, Otemachi 2-chome, Chiyoda-ku, Tokyo 100-8791, Japan |
| Telephone: | 03-3477-0111 (Japan Post Group main number) |
| Paid-in capital: | ¥3,500 billion |
| Date of establishment: | January 23, 2006 |
| Legal basis: | Established under the Japan Post Holdings Co., Ltd. Act (Law No. 98 of October 21, 2005) |
| Lines of business: | Strategy formulation of Group management |

② Information on Shares

(As of March 31, 2019)

1. Number of Shares

| | |
|-----------------------------------|----------------|
| Total number of authorized shares | 18,000,000,000 |
| Total number of issued shares | 4,500,000,000 |
| Total number of shareholders | 623,985 |

2. Major Shareholders

| | Capital contribution to the company | |
|---|-------------------------------------|--------------------|
| | Number of shares held | Shareholding ratio |
| Minister of Finance | 2,559,524,700 | 63.29% |
| The Master Trust Bank of Japan, Ltd. (Trust Account) | 93,685,200 | 2.31% |
| Japan Trustee Services Bank, Ltd. (Trust Account) | 65,445,700 | 1.61% |
| Japan Post Holdings Employee Shareholding Association | 60,379,100 | 1.49% |
| STATE STREET BANK WEST CLIENT - TREATY 505234 | 33,702,449 | 0.83% |
| Japan Trustee Services Bank, Ltd. (Trust Account 5) | 30,736,700 | 0.76% |
| Japan Trustee Services Bank, Ltd. (Trust Account 9) | 27,873,000 | 0.68% |
| JP MORGAN CHASE BANK 385151 | 26,023,166 | 0.64% |
| STATE STREET BANK AND TRUST COMPANY 505103 | 21,216,261 | 0.52% |
| Japan Trustee Services Bank, Ltd. (Trust Account 1) | 20,427,400 | 0.50% |

Note 1: Japan Post Holdings Co. holds 456,139,201 shares of treasury stock, which are not included in the above list of major shareholders.

Note 2: The shareholding ratio is calculated by deducting treasury stock from the total number of issued shares.

3. Matters Concerning Stock Acquisition Rights

None.

③ Number of Employees

2,106 (as of March 31, 2019)

* The number of employees excludes employees assigned to other companies by Japan Post Holdings Co. but includes employees assigned to Japan Post Holdings Co. by other companies. The figures do not include part-time employees (including the indefinite-term employees (associates) based on the indefinite-term employment conversion system).

④ List of Directors, Executive Officers and Management Committees

(As of July 5, 2019)

1. Directors

| | |
|--|---|
| President & CEO (Representative Executive Officer)..... | Masatsugu Nagato (Concurrently holds the positions of Director of Japan Post Co., Ltd., Director of Japan Post Bank Co., Ltd., and Director of Japan Post Insurance Co., Ltd.) |
| Senior Executive Vice President (Representative Executive Officer) ... | Yasuo Suzuki (Concurrently holds the position of Director of Japan Post Co., Ltd.) |
| Director | Norito Ikeda (Concurrently holds the position of Director, President and Representative Executive Officer of Japan Post Bank Co., Ltd.) |
| Director | Kunio Yokoyama (Concurrently holds the position of President & CEO (Representative Executive Officer) of Japan Post Co., Ltd.) |
| Director | Mitsuhiro Uehira (Concurrently holds the position of Director and President, CEO Representative Executive Officer of Japan Post Insurance Co., Ltd.) |
| Director | Riki Mukai |
| Director (Outside) | Akio Mimura (Concurrently holds the position of Honorary Company Fellow and Honorary Chairman of NIPPON STEEL CORPORATION) |
| Director (Outside) | Tadashi Yagi (Concurrently holds the position of Advisor to K. K. Kyodo News) |
| Director (Outside) | Kunio Ishihara (Concurrently holds the position of Senior Advisor to the Board of Tokio Marine & Nichido Fire Insurance Co., Ltd.) |
| Director (Outside) | Charles Ditmars Lake II (Concurrently holds the position of Chairman and Representative Director of Aflac Life Insurance Japan Ltd.) |
| Director (Outside) | Michiko Hirono |
| Director (Outside) | Tsuyoshi Okamoto (Concurrently holds the position of Senior Corporate Advisor to Tokyo Gas Co., Ltd.) |
| Director (Outside) | Miharu Koezuka (Concurrently holds the position of Advisor to Takashimaya Co., Ltd.) |
| Director (Outside) | Takayuki Aonuma (Attorney at Law) |
| Director (Outside) | Sakie Akiyama (Concurrently holds the position of Founder (Advisor) of Saki Corporation) |

2. Executive Officers (Excludes persons with concurrent posts in the above 1. Directors)

| | | | |
|---|--------------------|----------------------------|--------------------|
| Executive Vice President (Representative Executive Officer) | Toshihide Komatsu | Managing Executive Officer | Chikashi Isayama |
| Executive Vice President (Representative Executive Officer) | Yoshifumi Iwasaki | Managing Executive Officer | Kazuyuki Negishi |
| Senior Managing Executive Officer | Kunio Tanigaki | Managing Executive Officer | Susumu Tanaka |
| Senior Managing Executive Officer | Noboru Ichikura | Managing Executive Officer | Nobuyasu Kato |
| Senior Managing Executive Officer | Kazuhide Kinugawa | Executive Officer | Makoto Sakurai |
| Senior Managing Executive Officer | Atsuhiko Ikeda | Executive Officer | Tsutomu Shomura |
| Senior Managing Executive Officer | Toru Inasawa | Executive Officer | Mamiko Izumi |
| Managing Executive Officer | Kenji Fukumoto | Executive Officer | Noriko Kinoshita |
| Managing Executive Officer | Kimihiko Oku | Executive Officer | Toshitaka Shima |
| Managing Executive Officer | Yoshiharu Miyazaki | Executive Officer | Kozo Otaka |
| Managing Executive Officer | Hiroaki Kawamoto | Executive Officer | Nobuo Tsuruda |
| Managing Executive Officer | Kenji Ogata | Executive Officer | Makoto Kazamatsuri |
| Managing Executive Officer | Hiroyuki Furusato | Executive Officer | Kenji Meguro |
| Managing Executive Officer | Kenichi Kozuka | Executive Officer | Tomonori Asai |
| | | | Hitoshi Arawaka |

3. Nomination Committee

| | |
|-------------|------------------|
| Chairperson | Akio Mimura |
| Member | Kunio Ishihara |
| Member | Masatsugu Nagato |

4. Audit Committee

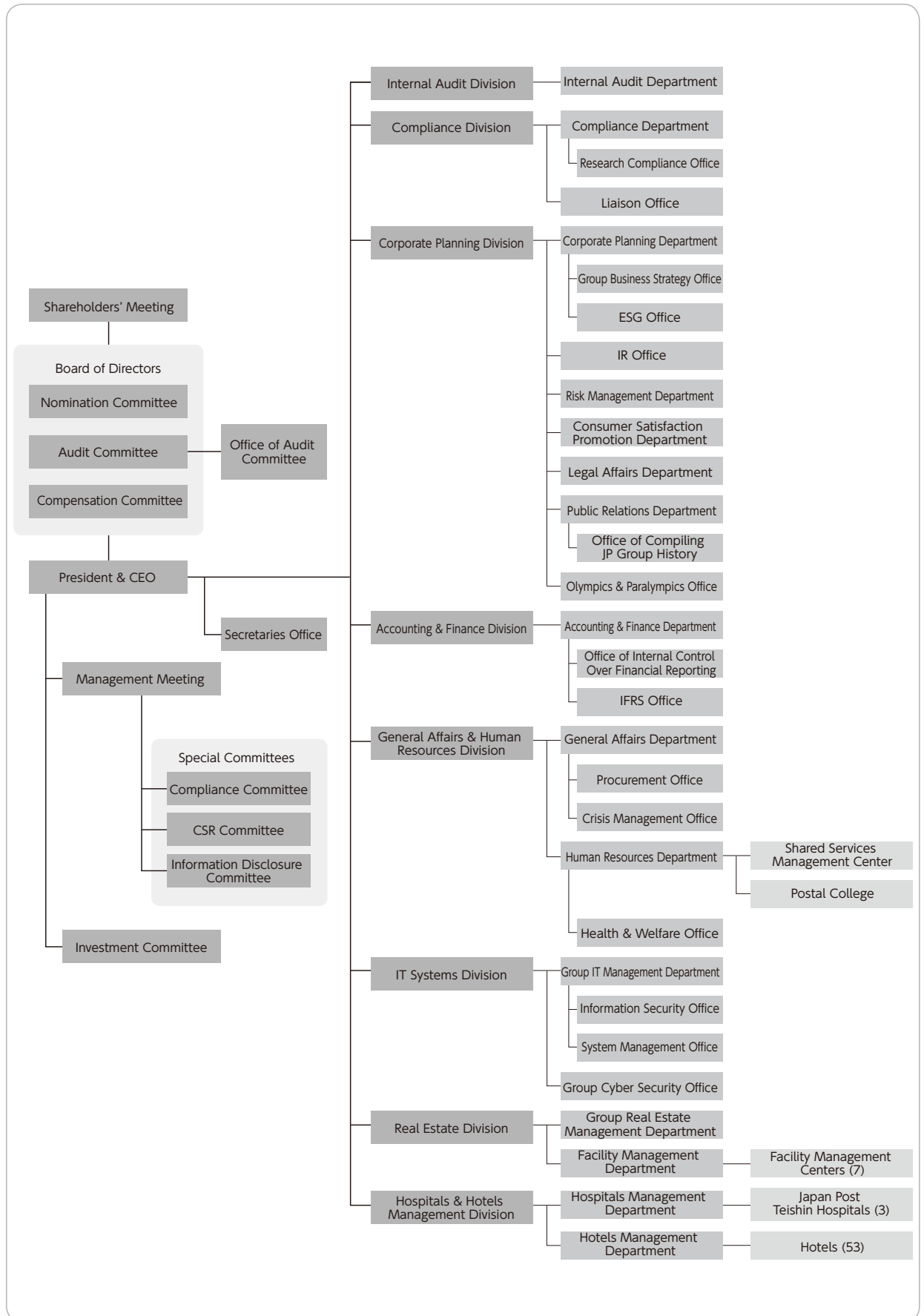
| | |
|-------------|-----------------|
| Chairperson | Tadashi Yagi |
| Member | Miharu Koezuka |
| Member | Takayuki Aonuma |
| Member | Sakie Akiyama |
| Member | Riki Mukai |

5. Compensation Committee

| | |
|-------------|------------------|
| Chairperson | Tsuyoshi Okamoto |
| Member | Tadashi Yagi |
| Member | Masatsugu Nagato |

5 Organization Chart

(As of April 1, 2019)



⑥ Principal Subsidiaries and Affiliates of Japan Post Holdings Co.

(As of March 31, 2019)

| Affiliation | Company name | Location | Issued capital (millions) | Main business | Date of establishment | Percentage ownership of voting rights |
|---|--|----------------------------------|--|---|-----------------------|---------------------------------------|
| Consolidated subsidiaries | JAPAN POST Co., Ltd. | Chiyoda-ku, Tokyo | ¥400,000 | Postal and domestic logistics business, post office business | October 1, 2007 | 100.0% |
| | Japan Post Transport Co., Ltd. | Minato-ku, Tokyo | ¥18,250 | Postal and domestic logistics business (truck cargo transportation) | November 30, 2007 | 100.0% (100.0%) |
| | JAPAN POST MAINTENANCE Co., Ltd. | Koto-ku, Tokyo | ¥50 | Postal and domestic logistics business (automobile maintenance and machinery maintenance business, product sales business, vehicle maintenance and management business) | March 31, 1991 | 100.0% (100.0%) |
| | JAPAN POST SANKYU GLOBAL LOGISTICS CO., LTD. | Chuo-ku, Tokyo | ¥300 | Postal and domestic logistics business (international air freight forwarding) | July 1, 2008 | 60.0% (60.0%) |
| | JP Biz Mail Co., Ltd. | Adachi-ku, Tokyo | ¥100 | Postal and domestic logistics business (preparation and posting of postal items) | February 1, 2006 | 58.5% (58.5%) |
| | JP Media Direct Co., Ltd. | Minato-ku, Tokyo | ¥300 | Postal and domestic logistics business (planning, development and sales of direct mail and contracted shipment of merchandise) | February 29, 2008 | 51.0% (51.0%) |
| | Tokyo Beiyu Co., Ltd. | Meguro-ku, Tokyo | ¥22 | Postal and domestic logistics business (petroleum sales business) | March 10, 1949 | 79.8% (79.8%) |
| | Japan Post Trading Service Co., Ltd. | Koto-ku, Tokyo | ¥100 | Post office business (merchandise business, contracting business for merchandise operations) | September 11, 2007 | 100.0% (100.0%) |
| | Japan Post Building Management Co., Ltd. | Chiyoda-ku, Tokyo | ¥150 | Post office business (property management for commercial buildings) | April 1, 2011 | 100.0% (100.0%) |
| | Japan Post Communications Co., Ltd. | Minato-ku, Tokyo | ¥350 | Post office business (operations related to posting advertisements in post offices) | August 8, 2014 | 100.0% (100.0%) |
| | JAPAN POST OFFICE SUPPORT Co., Ltd. | Minato-ku, Tokyo | ¥100 | Post office business (merchandise sales, facilities management and contracting business) | March 16, 1971 | 100.0% (100.0%) |
| | JP GENERAL INSURANCE AGENCY Co., Ltd. | Chiyoda-ku, Tokyo | ¥20 | Post office business (non-life insurance and automobile liability insurance agency business) | August 7, 1950 | 70.0% (70.0%) |
| | JP MITSUKOSHI MERCHANDISING Co., Ltd. | Koto-ku, Tokyo | ¥50 | Post office business (mail-order business, wholesale, others) | April 1, 2014 | 60.0% (60.0%) |
| | YY Gift Co., Ltd. | Nishi-ku, Yokohama-shi, Kanagawa | ¥20 | Post office business (sales of catalog products, mail-order business, agency business for sales of alcohol) | April 23, 1996 | 51.0% (51.0%) |
| | JP TOKYO TOKUSENKAI Co., Ltd. | Taito-ku, Tokyo | ¥30 | Post office business (sales of catalog products, mail-order business) | March 2, 2015 | 51.0% (51.0%) |
| | Toll Holdings Limited | Melbourne, Australia | AUD2,978 | International logistics business (forwarding business, 3PL business, express business) | June 20, 1986 | 100.0% (100.0%) |
| | JP TOLL LOGISTICS, Co., Ltd. | Chiyoda-ku, Tokyo | ¥100 | International logistics business (Forwarding business, 3PL business) | September 16, 2009 | 100.0% (100.0%) |
| | TOLL EXPRESS JAPAN CO., LTD. | Ibaraki-shi, Osaka | ¥10 | International logistics business (express business) | January 29, 2002 | 100.0% (100.0%) |
| | JAPAN POST BANK Co., Ltd. | Chiyoda-ku, Tokyo | ¥3,500,000 | Banking business | September 1, 2006 | 89.0% |
| | Japan Post Investment Corporation | Chiyoda-ku, Tokyo | ¥750 | Banking business (securities investment management business) | February 9, 2018 | 75.0% (75.0%) [25.0%] |
| JAPAN POST INSURANCE Co., Ltd. | Chiyoda-ku, Tokyo | ¥500,000 | Life insurance business | September 1, 2006 | 89.0% | |
| JAPAN POST INSURANCE SYSTEM SOLUTIONS Co., Ltd. | Shinagawa-ku, Tokyo | ¥500 | Life insurance businesses (commissioning of design, development, maintenance and operation of information systems) | March 8, 1985 | 100.0% (100.0%) | |
| JAPAN POST STAFF Co., Ltd. | Minato-ku, Tokyo | ¥640 | Other businesses (temporary staffing service, contracted business) | July 3, 2007 | 100.0% | |

Vision

Enhancing Corporate Value

Medium-term Strategy

Sustainability

Data Compilation

| Affiliation | Company name | Location | Issued capital (millions) | Main business | Date of establishment | Percentage ownership of voting rights |
|--|---|-------------------------------|---------------------------|---|-----------------------|---------------------------------------|
| Consolidated subsidiaries | YUSEI CHALLENGED CO., Ltd. | Setagaya-ku, Tokyo | ¥5 | Other businesses (office cleaning) | November 20, 2007 | 100.0% |
| | Japan Post Hotel Service Co., Ltd. | Chuo-ku, Saitama-shi, Saitama | ¥39 | Other businesses (contracted hotel management) | December 25, 1996 | 100.0% |
| | Japan Post Information Technology Co., Ltd. | Shinjuku-ku, Tokyo | ¥3,150 | Other businesses (communication network maintenance and management) | January 30, 1987 | 100.0% |
| | Japan Post Capital Co., Ltd. | Chiyoda-ku, Tokyo | ¥1,500 | Other businesses (investment business, consulting business for management and financial matters) | November 1, 2017 | 100.0% |
| | Japan Post Real Estate Co., Ltd. | Chiyoda-ku, Tokyo | ¥1,500 | Other businesses (ownership, leasing and management business of real estate, development business of residential and commercial land, etc.) | April 2, 2018 | 100.0% |
| | System Trust Laboratory Co., Ltd. | Shinagawa-ku, Tokyo | ¥99 | Other businesses (consulting, planning and development business for business systems and basic technologies) | August 1, 1989 | 100.0% (100.0%) |
| | JP TWOWAY CONTACT Co., Ltd. | Nishi-ku, Osaka-shi, Osaka | ¥182 | Other businesses (telemarketing services) | April 18, 1988 | 82.9% (82.9%) |
| | and 235 other companies | | | | | |
| Affiliated companies accounted for under the equity method | SAISON ASSET MANAGEMENT Co., Ltd. | Toshima-ku, Tokyo | ¥1,000 | Post office business (type II financial instruments business operation and investment trust management business, others) | June 12, 2006 | 40.0% (40.0%) |
| | JA FOODS OITA CO., LTD. | Kitsuki-shi, Oita | ¥493 | Post office business (processing and sales of agricultural products, fruits and vegetables) | December 2, 1991 | 20.0% (20.0%) |
| | RINGBELL Co., Ltd. | Chuo-ku, Tokyo | ¥354 | Post office business (planning, production and sales of gift catalogs, others) | July 3, 1987 | 20.0% (20.0%) |
| | JP Asset Management Co., Ltd. | Chuo-ku, Tokyo | ¥500 | Banking business (type II financial instruments business operation and investment management business) | August 18, 2015 | 50.0% (50.0%) |
| | SDP Center Co., Ltd. | Chuo-ku, Tokyo | ¥2,000 | Banking business (bank agency operations) | May 28, 1980 | 45.0% (45.0%) |
| | ATM Japan Business Service, Ltd. | Minato-ku, Tokyo | ¥100 | Banking business (ATM cash loading and collection as well as ATM management) | August 30, 2012 | 35.0% (35.0%) |
| | and 16 other companies | | | | | |

Note 1: In the Main business column, besides the segment names, a summary of the businesses carried out by the concerned companies is included within the parentheses.

Note 2: Among the affiliated companies listed above, Japan Post Co., Japan Post Bank Co. and Japan Post Insurance Co. correspond to specified subsidiary.

Note 3: Among the affiliated companies listed above, Japan Post Bank Co., and Japan Post Insurance Co. submit securities reports.

Note 4: The figures in parentheses in the column showing percentage ownership of voting rights indicate the percentage of indirect ownership (within parentheses) through subsidiaries. The figures in brackets indicate "Those parties deemed to exercise voting rights for the same details as their own intentions because of the close relationships between themselves and investments, personnel, capital, technologies, business transactions, etc." or "Those parties that agree to exercise voting rights for the same details as their own intentions" (outside the parentheses).

Note 5: In April 2019, the Company executed a second sale of common shares of Japan Post Insurance Co. As a result of this sale and the acquisition of treasury stock by Japan Post Insurance Co., the Company's percentage ownership of voting rights in Japan Post Insurance Co. became approximately 64%.

Note 6: Among the affiliated companies listed above, the ordinary income (excluding intercompany ordinary income of consolidated companies) of Japan Post Co., Japan Post Bank Co. and Japan Post Insurance Co. exceeded 10% of consolidated ordinary income. Information on principal profits and losses of Japan Post Co. is detailed below. Information on Japan Post Bank Co. and Japan Post Insurance Co. is omitted because these companies submit securities reports.

| Name | Principal information on profits and losses (Millions of yen) | | | | |
|----------------|---|-----------------|------------|------------|--------------|
| | Operating income | Ordinary income | Net income | Net assets | Total assets |
| Japan Post Co. | ¥ 3,119,646 | ¥ 177,105 | ¥ 133,581 | ¥ 706,102 | ¥ 4,695,990 |

① Company Outline

| | |
|-----------------------------|--|
| Company name (in Japanese): | Nippon Yubin Kabushiki Kaisha |
| Company name: | JAPAN POST Co., Ltd. |
| Head office location: | 3-1, Otemachi 2-chome, Chiyoda-ku, Tokyo 100-8792, Japan |
| Telephone: | 03-3477-0111 (Japan Post Group main number) |
| Paid-in capital: | ¥400 billion |
| Date of establishment: | October 1, 2007 |
| Legal basis: | Established under the Japan Post Co., Ltd. Act (Law No. 100 of October 21, 2005) |
| Lines of business: | Postal operations; banking counter operations; insurance counter operations; sales of documentary stamps; operations consigned by local government entities; bank and life and non-life insurance agency services other than those mentioned previously; domestic distribution and delivery business and international cargo transport and agency services for air cargo business; logistics business; real estate business; and merchandise sales |

② Management Philosophy

Management Philosophy

"Japan Post Co., Ltd. will fully utilize its resources that include its post office and delivery networks covering every corner of the country to provide safe, reliable and fast services tailored to the needs of each community while contributing to the realization of a society with an abundance of human contact by supporting people's lifestyles throughout their entire lives."

- We will provide the basic postal services of postal, banking and insurance services extensively across the country into the future.
- We will take on the challenge of providing innovative services that respond accurately to changes in society and enrich people's lives.
- We will fulfill our responsibilities as a corporate citizen by establishing corporate governance systems and strictly implementing compliance.
- Each and every employee will continue to grow to ensure we are appreciated by our customers and trusted and respected by local communities.

③ Information on Shares

(As of March 31, 2019)

1. Number of Shares

| | |
|---------------------|------------|
| Total shares issued | 10,000,000 |
|---------------------|------------|

2. Shareholder

| Japan Post Holdings Co., Ltd. | Condition of holdings | |
|-------------------------------|-----------------------|----------------------------|
| | Shares owned | Percentage of total issued |
| | 10,000,000 | 100% |

④ Number of Employees

192,889* (as of March 31, 2019)

* The number of employees excludes employees assigned to other companies by Japan Post Co. but includes employees assigned to Japan Post Co. by other companies. The figures do not include part-time employees (including the indefinite-term employees (associates) based on the indefinite-term employment conversion system).

5 List of Directors, Auditors and Executive Officers

(As of July 1, 2019)

1. Directors

| | |
|--|--|
| Chairman | Toru Takahashi |
| President & CEO (Representative Executive Officer)..... | Kunio Yokoyama (Concurrently holds the position of Director of Japan Post Holdings Co., Ltd.) |
| Senior Executive Vice President (Representative Director)..... | Tomohiro Yonezawa |
| Executive Vice President (Director) | Chikashi Isayama (Concurrently holds the position of Managing Executive Officer of Japan Post Holdings Co., Ltd.) |
| Director | Yasuo Suzuki (Concurrently holds the position of Representative Director and Senior Executive Vice President of Japan Post Holdings Co., Ltd.) |
| Director | Masatsugu Nagato (Concurrently holds the position of Representative Executive Officer and President & CEO of Japan Post Holdings Co., Ltd.) |
| Director (Outside) | Risa Tanaka (Concurrently holds the position of President of The Graduate School of Project Design and Director of Media and Information of Sendenkaigi Co., Ltd.) |
| Director (Outside) | Kaori Sasaki (Concurrently holds the position of President and CEO of ewoman, Inc.) |
| Director (Outside) | Yoshikuni Sugiyama (Concurrently holds the position of Representative Director and President of Yomiuri Land Co., Ltd.) |
| Director (Outside) | Takako Suwa (Concurrently holds the position of Representative Director of Daiya Seiki Co. Ltd.) |
| Director (Outside) | Toyohiko Takabe (Formerly held the position of Representative Director and President of Nippon Telegraph and Telephone Corporation) |
| Director (Outside) | Akira Nokina (Concurrently holds the position of Representative Director and Chairman of North Pacific Securities Co., Ltd.) |

2. Audit and Supervisory Board Members

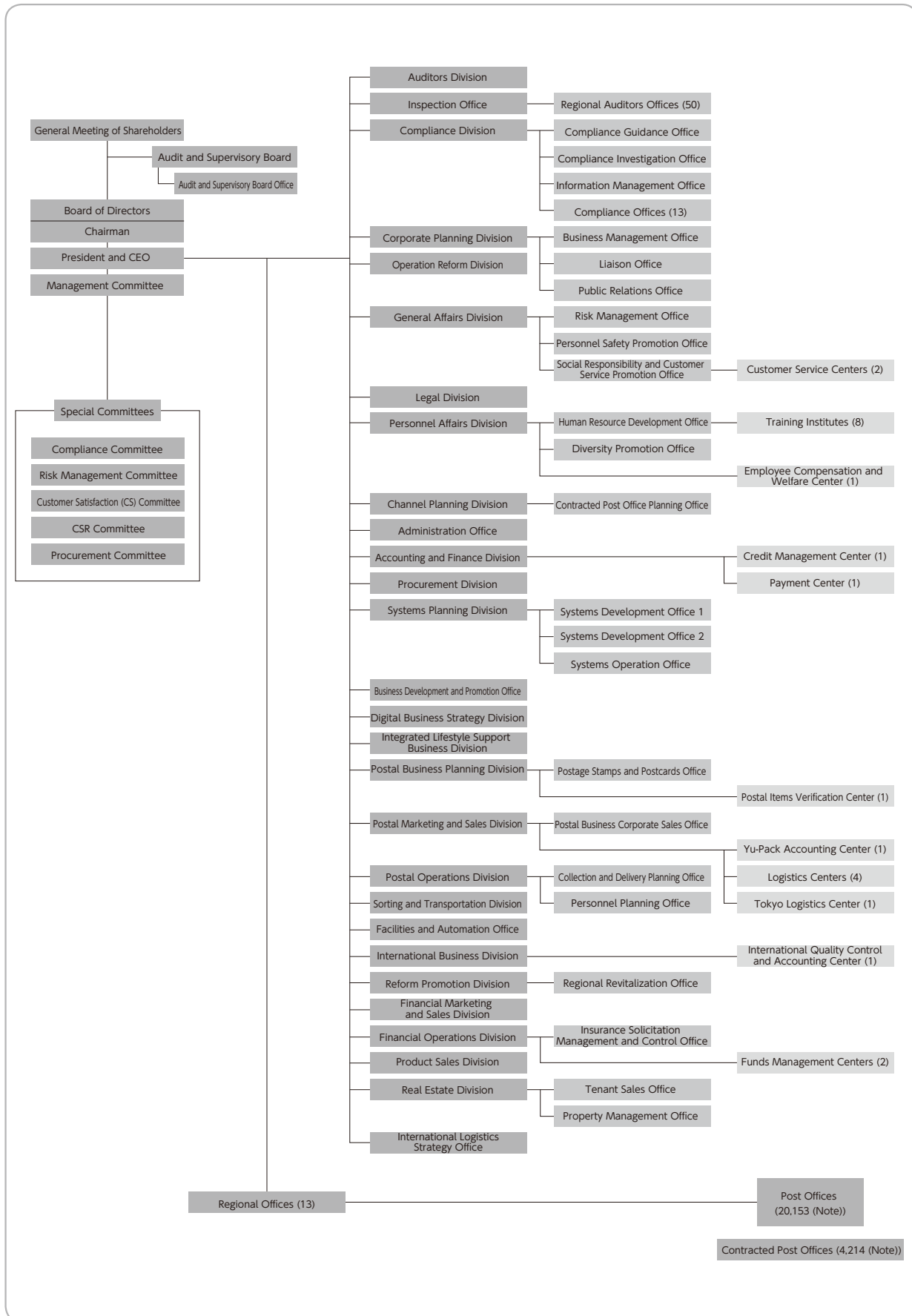
Mitsuyuki Yamamoto
Toshiyuki Takano
Hiroshi Shidehara
Masayasu Oguro

3. Executive Officers

| | | | |
|--|-----------------------|-------------------|--|
| Vice President | Makoto Osawa | Executive Officer | Hitoshi Arawaka (Concurrently holds the position of Executive Officer of Japan Post Holdings Co., Ltd.) |
| First Executive Officer | Taneki Ono | Executive Officer | Masahiko Metoki |
| First Executive Officer | Yoshinori Suzuki | Executive Officer | Atsushi Fuchie |
| First Executive Officer | Yoshiyuki Higuchi | Executive Officer | Kanako Asami |
| Senior Executive Officer | Satoru Tatebayashi | Executive Officer | Koji Kamiozaki |
| Senior Executive Officer | Norio Wakasa | Executive Officer | Katsuyo Yamazaki |
| Senior Executive Officer (Concurrently holds the position of Managing Executive Officer of Japan Post Holdings Co., Ltd.) | Yoshiharu Miyazaki | Executive Officer | Akihito Nishiguchi |
| Senior Executive Officer | Satoshi Higashikozono | Executive Officer | Hiroaki Yasuda |
| Senior Executive Officer | Kimikazu Sano | Executive Officer | Yasuhiro Takahashi |
| Senior Executive Officer | Michio Kaneko | Executive Officer | Atsushi Hasegawa |
| Senior Executive Officer (Concurrently holds the position of Managing Executive Officer of Japan Post Holdings Co., Ltd.) | Kazuyuki Negishi | Executive Officer | Shinya Koike |
| Senior Executive Officer | Masaaki Yamazaki | Executive Officer | Masato Ogawa |
| | | Executive Officer | Shinji Denishi |
| | | Executive Officer | Katsunori Nakai |
| | | Executive Officer | Tsukasa Namiki |
| | | Executive Officer | Takayuki Urase |
| | | Executive Officer | Akihiko Isohata |

6 Organization Chart

(As of April 1, 2019)



Note: The number of directly managed post offices and contracted post offices is as of March 31, 2019.

① Company Outline

| | |
|------------------------------------|---|
| Company name (in Japanese): | Kabushiki Kaisha Yucho Ginko |
| Company name: | JAPAN POST BANK Co., Ltd. |
| Head office location: | 3-1, Otemachi 2-chome, Chiyoda-ku, Tokyo 100-8793, Japan |
| Telephone: | 03-3477-0111 (Japan Post Group main number) |
| Paid-in capital: | ¥3,500 billion |
| Date of establishment: | September 1, 2006 (On October 1, 2007, the name was changed from Yucho Co., Ltd. to Japan Post Bank Co., Ltd.) |
| Line of business: | Banking |
| Financial institution code number: | 9900 |

② Management Philosophy

Management Philosophy

Japan Post Bank Co. aims to become "the most accessible and trustworthy bank in Japan," guided by the needs and expectations of our customers.

| | |
|-------------|---|
| Trust: | We comply with laws, regulations, and other standards of behavior and value trusted relationships with customers, markets, shareholders, and employees and consistently serve as a responsible corporate citizen. |
| Innovation: | We work sincerely to improve our management and business operations in response to requests from customers and changes in the business environment. |
| Efficiency: | We pursue improvements in speed and efficiency of our management and business operations in order to provide customer-oriented financial instruments and services. |
| Expertise: | We continually strive to strengthen our expertise for the aim of services meeting the expectations of our customers. |

③ Information on Shares

(As of March 31, 2019)

1. Number of Shares

| | |
|---------------------|---------------|
| Total shares issued | 4,500,000,000 |
|---------------------|---------------|

2. Major Shareholders

| | | Shares owned (thousand) | Shareholding ratio (%) |
|----|--|-------------------------|------------------------|
| 1 | Japan Post Holdings Co., Ltd. | 3,337,032 | 88.99 |
| 2 | The Master Trust Bank of Japan, Ltd. (Trust Account) | 28,077 | 0.74 |
| 3 | Japan Trustee Services Bank, Ltd. (Trust Account) | 22,968 | 0.61 |
| 4 | Japan Trustee Services Bank, Ltd. (Trust Account 5) | 10,968 | 0.29 |
| 5 | STATE STREET BANK WEST CLIENT - TREATY 505234 | 10,084 | 0.26 |
| 6 | Japan Trustee Services Bank, Ltd. (Trust Account 9) | 8,250 | 0.22 |
| 7 | Japan Post Bank Employee Shareholding Association | 8,102 | 0.21 |
| 8 | Japan Trustee Services Bank, Ltd. (Trust Account 1) | 7,258 | 0.19 |
| 9 | Japan Trustee Services Bank, Ltd. (Trust Account 2) | 6,790 | 0.18 |
| 10 | JP MORGAN CHASE BANK 385151 | 6,495 | 0.17 |

Note 1: Japan Post Bank Co. holds 750,524 thousand shares of treasury stock (16.67% of total issued), which are not included in the above list of major shareholders. Treasury stock does not include shares of Japan Post Bank Co. owned by the stock benefit trust (683 thousand shares).

Note 2: The shareholding ratio has been calculated excluding treasury stock (750,524 thousand shares) and rounded down to the second decimal place.

④ Number of Employees

12,800* (as of March 31, 2019)

* The number of employees excludes employees assigned to other companies by Japan Post Bank Co. but includes employees assigned to Japan Post Bank Co. by other companies. The figures do not include part-time employees (including the indefinite-term employees (associates) based on the indefinite-term employment conversion system).

5 List of Directors, Executive Officers and Management Committees

(As of July 1, 2019)

1. Directors

| | |
|---|--|
| President and Representative Executive Officer..... | Norito Ikeda (Concurrently holds the position of Director of Japan Post Holdings Co., Ltd.) |
| Representative Executive Vice President..... | Susumu Tanaka (Concurrently holds the position of Managing Executive Officer of Japan Post Holdings Co., Ltd.) |
| Director | Masatsugu Nagato (Concurrently holds the position of Director and Representative Executive Officer and President & CEO of Japan Post Holdings Co., Ltd.) |
| Director | Ryoichi Nakazato |
| Outside Director | Tomoyoshi Arita (Attorney-at-Law) |
| Outside Director | Sawako Nohara (Concurrently holds the position of President and CEO of IPSe Marketing, Inc.) |
| Outside Director | Tetsu Machida (Independent Economic Journalist) |
| Outside Director | Nobuko Akashi (Concurrently holds the position of Board chairman of a non-profit organization, Japan Manners & Protocol Association) |
| Outside Director | Katsuaki Ikeda (Formerly held the position of Corporate Auditor of MS&AD Insurance Group Holdings, Inc.) |
| Outside Director | Ryoji Chubachi (Concurrently holds the position of President of National Institute of Advanced Industrial Science and Technology) |
| Outside Director | Keisuke Takeuchi (Formerly held the position of Principal Corporate Advisor of JGC Corporation) |
| Outside Director | Makoto Kaiwa (Concurrently holds the position of Representative Director & Chairman of the Board of Tohoku Electric Power Co., Inc.) |
| Outside Director | Risa Aihara (Concurrently holds the position of Representative Director and President of Ai-LAND Co., Ltd.) |

2. Executive Officers (Excludes persons with concurrent posts in the above 1. Directors)

| | | | |
|-----------------------------------|--------------------|-------------------|--------------------|
| Executive Vice President | Yoshinori Hagino | Executive Officer | Yoko Makino |
| Executive Vice President | Kunio Tahara | Executive Officer | Kunihiko Amaha |
| Senior Managing Executive Officer | Masahiro Murashima | Executive Officer | Makoto Shinmura |
| Senior Managing Executive Officer | Hiroichi Shishimi | Executive Officer | Satoru Ogata |
| Senior Managing Executive Officer | Harumi Yano | Executive Officer | Toshiharu Ono |
| Managing Executive Officer | Masahiro Nishimori | Executive Officer | Shigeyuki Sakurai |
| Managing Executive Officer | Atsuko Onodera | Executive Officer | Shinobu Nagura |
| Managing Executive Officer | Masato Tamaki | Executive Officer | Nobuhiro Fukuoka |
| Managing Executive Officer | Minoru Kotouda | Executive Officer | Ryotaro Yamada |
| Managing Executive Officer | Toshiyuki Yazaki | Executive Officer | Haruchika Tsukioka |
| Managing Executive Officer | Takayuki Tanaka | Executive Officer | Hideki Nakao |
| | | Executive Officer | Etsuko Kishi |

3. Nomination Committee

| | |
|----------|------------------|
| Chairman | Masatsugu Nagato |
| Member | Tomoyoshi Arita |
| Member | Ryoji Chubachi |
| Member | Makoto Kaiwa |

4. Audit Committee

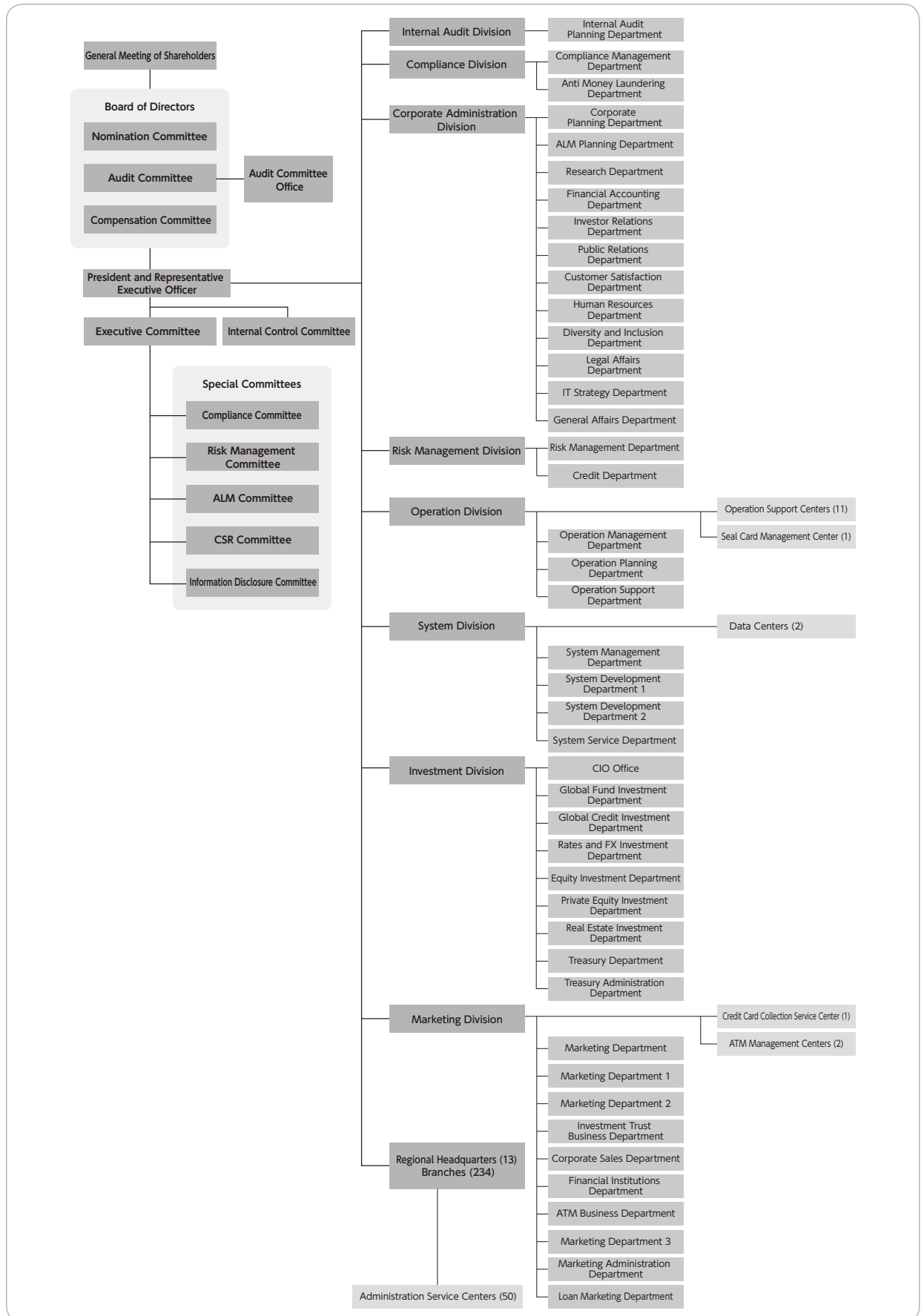
| | |
|----------|------------------|
| Chairman | Tomoyoshi Arita |
| Member | Ryoichi Nakazato |
| Member | Sawako Nohara |
| Member | Tetsu Machida |
| Member | Katsuaki Ikeda |

5. Compensation Committee

| | |
|----------|------------------|
| Chairman | Ryoji Chubachi |
| Member | Masatsugu Nagato |
| Member | Katsuaki Ikeda |
| Member | Keisuke Takeuchi |

6 Organization Chart

(As of July 1, 2019)



① Company Outline

| | |
|-----------------------------|--|
| Company name (in Japanese): | Kabushiki Kaisha Kanpo Seimei Hoken |
| Company name: | JAPAN POST INSURANCE Co., Ltd. |
| Head office location: | 3-1, Otemachi 2-chome, Chiyoda-ku, Tokyo 100-8794, Japan |
| Telephone: | 03-3477-0111 (Japan Post Group main number) |
| Paid-in capital: | ¥500 billion |
| Date of establishment: | September 1, 2006 (The name of the company was changed from Kampo Co., Ltd. to Japan Post Insurance Co., Ltd., on October 1, 2007.) |
| Line of business: | Life insurance |

② Management Philosophy and Management Policy

Management Philosophy

Be a trustful partner for people, always being close at hand and endeavoring to protect their well-being.

Management Policy

We aim to become the No.1 Japanese insurance company selected by customers.

1. We are always close to people's lives, offering easy-to-understand products and high-quality services.
2. We always ensure that employees who have contact with our customers make full use of their strengths to offer better customer services.
3. We create a working environment in which all employees can develop their talents and work with energy and vitality.
4. We practice sound management based on strong corporate governance, constantly creating new value to achieve sustainable growth.
5. We actively contribute to health promotion, environmental protection, and the development of local communities and society as a whole.
6. We work to communicate closely with all stakeholders.

③ Information on Stocks

(as of March 31, 2019)

1. Number of Stocks

| | |
|---------------|-------------|
| Issued stocks | 600,000,000 |
|---------------|-------------|

Note: The total number of issued stocks decreased by 37,400,000 shares due to the cancellation of shares on May 31, 2019, pursuant to a resolution at a meeting of the Board of Directors held on May 15, 2019.

2. Major Shareholders

| | Investments in Japan Post Insurance Co., Ltd. | |
|--|---|---------------------------|
| | Number of shares held | Percentage of shares held |
| Japan Post Holdings Co., Ltd. | 534,000,000 | 89.00% |
| THE BANK OF NEW YORK - JASDECNON - TREATY ACCOUNT | 4,483,478 | 0.75% |
| Japan Trustee Services Bank, Ltd. (Trust Account) | 3,585,700 | 0.60% |
| The Master Trust Bank of Japan, Ltd. (Trust Account) | 3,579,200 | 0.60% |
| Japan Post Insurance Employee Shareholding Association | 2,252,000 | 0.38% |
| Japan Trustee Services Bank, Ltd. (Trust Account 9) | 1,787,200 | 0.30% |
| Japan Trustee Services Bank, Ltd. (Trust Account 5) | 1,460,900 | 0.24% |
| JP MORGAN CHASE BANK 385151 | 993,780 | 0.17% |
| Japan Trustee Services Bank, Ltd. (Trust Account 1) | 970,000 | 0.16% |
| Japan Trustee Services Bank, Ltd. (Trust Account 2) | 913,100 | 0.15% |

Note 1: Percentage of shares held is rounded to two decimal places.

Note 2: The ratio of the shares held by Japan Post Holdings Co. to the total number of issued stocks (excluding treasury stock) of Japan Post Insurance Co. declined from the previous 89% to around 64% due to the secondary offering of stocks and the acquisition of treasury stock (April 2019).

④ Number of Employees

7,617* (as of March 31, 2019)

* The number of employees excludes employees assigned to other companies by Japan Post Insurance Co. but includes employees assigned to Japan Post Insurance Co. by other companies. The figures do not include part-time employees (including the indefinite-term employees (associates) based on the indefinite-term employment conversion system).

5 List of Directors, Executive Officers and Management Committees

(As of July 1, 2019)

1. Directors

| | |
|--|--|
| Director and President, CEO, Representative Executive Officer | Mitsuhiro Uehira (Concurrently holds the position of Director, Japan Post Holdings Co., Ltd.) |
| Director and Deputy President, Representative Executive Officer | Masaaki Horigane |
| Director | Masatsugu Nagato (Concurrently holds the position of Representative Executive Officer, President & CEO, Japan Post Holdings Co., Ltd.) |
| Outside Director | Masako Suzuki (Concurrently holds the position of Senior Advisor of Pasona Group Inc.) |
| Outside Director | Tamotsu Saito (Concurrently holds the position of Chairman of the Board of IHI Corporation) |
| Outside Director | Michiaki Ozaki (Attorney-at-law) |
| Outside Director | Meyumi Yamada (Concurrently holds the position of Executive Director of istyle Inc.) |
| Outside Director | Yoshie Komuro (Concurrently holds the position of President of Work-Life Balance Co., Ltd.) |
| Outside Director | Kazuyuki Harada (Concurrently holds the position of President & Representative Director of Keiikyū Corporation) |
| Outside Director | Akira Satake |

2. Executive Officers (Excludes persons holding concurrent posts in addition to the above. 1. Directors)

| | | |
|--|-------------------|--------------------|
| Deputy President Representative Executive Officer Tetsuya Senda | Executive Officer | Toru Onishi |
| Senior Managing Executive Officer Yoshito Horie | Executive Officer | Hidekazu Sakamoto |
| Managing Executive Officer Atsushi Tachibana | Executive Officer | Masamichi Yokoyama |
| Managing Executive Officer Nobuyasu Kato (Concurrently holds the position of Managing Executive Officer, Japan Post Holdings Co., Ltd.) | Executive Officer | Takashi Iida |
| Managing Executive Officer Yasuaki Hironaka | Executive Officer | Shinsuke Fujii |
| Managing Executive Officer Tomoaki Nara | Executive Officer | Norihiro Fujimori |
| Managing Executive Officer Nobuatsu Uchikoba | Executive Officer | Hajime Saito |
| Managing Executive Officer Yasumi Suzukawa | Executive Officer | Susumu Miyamoto |
| Managing Executive Officer Yoshiki Miyanishi | Executive Officer | Takashi Muro |
| Managing Executive Officer Michiko Matsuda | Executive Officer | Takayuki Haruna |
| Managing Executive Officer Kieko Onoki | Executive Officer | Takeshi Kume |
| Managing Executive Officer Junko Koie | | |
| Managing Executive Officer Motonori Tanaka | | |

3. Nomination Committee

| | |
|----------|------------------|
| Chairman | Masatsugu Nagato |
| Member | Tamotsu Saito |
| Member | Kazuyuki Harada |

4. Audit Committee

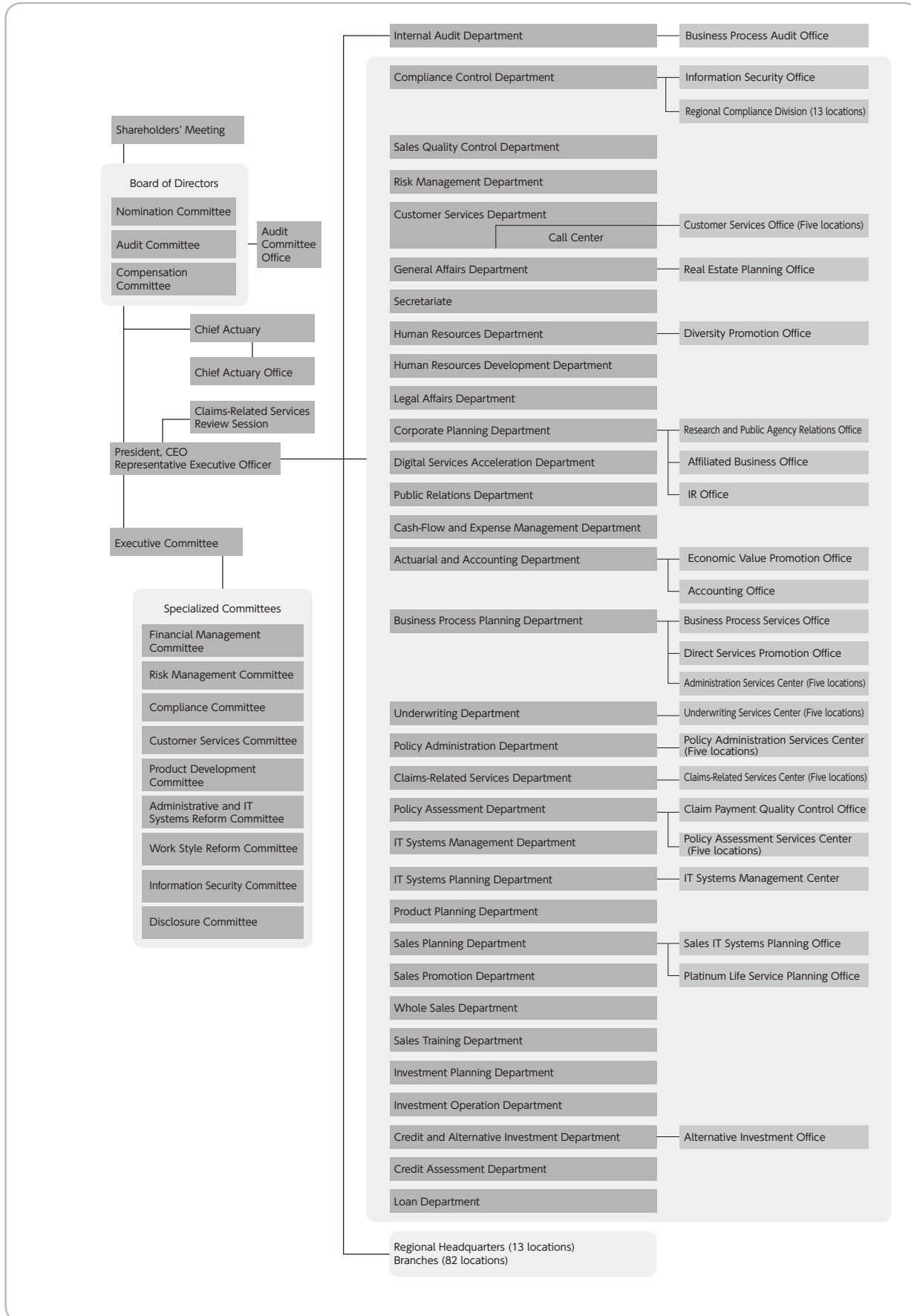
| | |
|----------|----------------|
| Chairman | Michiaki Ozaki |
| Member | Masako Suzuki |
| Member | Meyumi Yamada |
| Member | Akira Satake |

5. Compensation Committee

| | |
|----------|------------------|
| Chairman | Tamotsu Saito |
| Member | Masatsugu Nagato |
| Member | Kazuyuki Harada |

6 Organization Chart

(As of April 1, 2019)



Vision

Enhancing Corporate Value

Medium-term Strategy

Sustainability

Data Compilation