

Data Compilation INDEX

1. Outline of Japan Post Holdings Co., Ltd.

1. Company Outline	76
2. Information on Shares	76
3. Number of Employees	76
4. List of Directors, Executive Officers and Management Committees.....	77
5. Organization Chart.....	78
6. Principal Subsidiaries and Affiliates of Japan Post Holdings Co.	79

2. Outline of Japan Post Co., Ltd.

1. Company Outline	81
2. Management Philosophy	81
3. Information on Shares	81
4. Number of Employees	81
5. List of Directors, Auditors and Executive Officers.....	82
6. Organization Chart.....	83

3. Outline of Japan Post Bank Co., Ltd.

1. Company Outline	84
2. Management Philosophy	84
3. Information on Shares	84
4. Number of Employees	84
5. List of Directors, Executive Officers and Management Committees.....	85
6. Organization Chart.....	86

4. Outline of Japan Post Insurance Co., Ltd.

1. Company Outline	87
2. Management Philosophy and Management Policy...	87
3. Information on Stocks	87
4. Number of Employees	88
5. List of Directors, Executive Officers and Management Committees.....	88
6. Organization Chart.....	89

5. Transition of Significant Management Indicators, etc.

Japan Post Group (Consolidated).....	90
Japan Post Holdings Co. (Non-consolidated)	90
Japan Post Co. (Consolidated).....	90
Postal and domestic logistics business segment (Consolidated)	91
Post office business segment (Consolidated)	91
International logistics business segment (Consolidated).....	91
Japan Post Bank Co. (Consolidated).....	91
Japan Post Insurance Co. (Consolidated).....	91

6. Japan Post Group Companies —Consolidated Financial Data

CONSOLIDATED BALANCE SHEETS	92
CONSOLIDATED STATEMENTS OF OPERATIONS	94
CONSOLIDATED STATEMENTS OF COMPREHENSIVE INCOME.....	94
CONSOLIDATED STATEMENTS OF CHANGES IN NET ASSETS	95
CONSOLIDATED STATEMENTS OF CASH FLOWS.....	98
NOTES TO CONSOLIDATED FINANCIAL STATEMENTS	100
Capital Adequacy	133
Qualitative Disclosure.....	135
Compensation, etc. Subject to Disclosure.....	147
Consolidated Solvency Margin Ratio (Japan Post Group)	149
Non-consolidated Solvency Margin Ratio (Japan Post Insurance Co.).....	150

7. Japan Post Group Privacy Policy

1. Japan Post Group Privacy Policy.....	151
2. Sharing of Personal Data among Japan Post Group Companies.....	152

8. Japan Post Group Conflicts of Interest Management Policy

Japan Post Group Conflicts of Interest Management Policy.....	153
---	-----

9. Japan Post Group Information Security Declaration

Japan Post Group Information Security Declaration...	153
--	-----

10. Declaration by Top Management regarding the Elimination of Relationships with Antisocial Forces

Declaration by Top Management regarding the Elimination of Relationships with Antisocial Forces...	154
--	-----

11. Disclosure Policy

Disclosure Policy	154
-------------------------	-----

1. Outline of Japan Post Holdings Co., Ltd.

1 Company Outline

Company name (in Japanese):	Nippon Yusei Kabushiki Kaisha
Company name:	JAPAN POST HOLDINGS Co., Ltd.
Head office location:	3-2, Kasumigaseki 1-chome, Chiyoda-ku, Tokyo 100-8798, Japan
Telephone:	03-3504-4411 (Japan Post Group main number)
Paid-in capital:	¥3,500 billion
Date of establishment:	January 23, 2006
Legal basis:	Established under the Japan Post Holdings Co., Ltd. Act (Law No. 98 of October 21, 2005)
Lines of business:	Strategy formulation of Group management

2 Information on Shares

(As of March 31, 2018)

1. Number of Shares

Total number of authorized shares	18,000,000,000
Total number of issued shares	4,500,000,000
Total number of Shareholders	722,030

2. Major Shareholders

	Capital contribution to the company	
	Number of shares held	Shareholding ratio
Minister of Finance	2,559,524,700	63.29%
The Master Trust Bank of Japan, Ltd. (Trust Account)	64,897,200	1.60%
Japan Post Holdings Employee Shareholding Association	53,482,600	1.32%
Japan Trustee Services Bank, Ltd. (Trust Account)	48,946,200	1.21%
STATE STREET BANK WEST CLIENT - TREATY 505234	28,562,920	0.70%
Japan Trustee Services Bank, Ltd. (Trust Account 5)	20,721,700	0.51%
JP MORGAN CHASE BANK 385151	17,866,948	0.44%
STATE STREET BANK AND TRUST COMPANY 505225	15,932,272	0.39%
STATE STREET BANK - WEST PENSION FUND CLIENTS - EXEMPT 505233	15,745,500	0.38%
THE BANK OF NEW YORK 133524	15,645,600	0.38%

Note 1: Japan Post Holdings Co. holds 456,139,201 shares of treasury stock, which are not included in the above list of major shareholders.

Note 2: The shareholding ratio is calculated by deducting treasury stock from the total number of issued shares.

3. Matters Concerning Stock Acquisition Rights

None.

3 Number of Employees

2,422 (as of March 31, 2018)

* The number of employees excludes employees assigned to other companies by Japan Post Holdings Co., Ltd. but includes employees assigned to Japan Post Holdings Co., Ltd. by other companies. The figures do not include part-time employees (including the indefinite-term employees (associates) based on the indefinite-term employment conversion system).

(As of June 22, 2018)

1. Directors

President & CEO (Representative Executive Officer).....	Masatsugu Nagato (Concurrently holds the positions of Director of Japan Post Co., Ltd., Director of Japan Post Bank Co., Ltd., and Director of Japan Post Insurance Co., Ltd.)
Senior Executive Vice President (Representative Executive Officer) ...	Yasuo Suzuki (Concurrently holds the position of Director of Japan Post Co., Ltd.)
Director	Norito Ikeda (Concurrently holds the position of Director, President and Representative Executive Officer of Japan Post Bank Co., Ltd.)
Director	Kunio Yokoyama (Concurrently holds the position of President & CEO (Representative Executive Officer) of Japan Post Co., Ltd.)
Director	Mitsuhiko Uehira (Concurrently holds the position of Director and President, CEO Representative Executive Officer of Japan Post Insurance Co., Ltd.)
Director	Riki Mukai
Director (Outside)	Miwako Noma (Concurrently holds the position of Representative Director of Nippon Gurashi Co., Ltd.)
Director (Outside)	Akio Mimura (Concurrently holds the position of Senior Adviser to the Board and Honorary Chairman of Nippon Steel & Sumitomo Metal Corp.)
Director (Outside)	Tadashi Yagi (Concurrently holds the position of Adviser to K. K. Kyodo News)
Director (Outside)	Kunio Ishihara (Concurrently holds the position of Senior Adviser to the Board of Tokio Marine & Nichido Fire Insurance Co., Ltd.)
Director (Outside)	Charles Ditmars Lake II (Concurrently holds the position of Chairman and Representative Director of Aflac Life Insurance Japan Ltd.)
Director (Outside)	Michiko Hirono (Concurrently holds the position of Representative Director and President of 21 Lady Co., Ltd.)
Director (Outside)	Norio Munakata (Attorney)
Director (Outside)	Tsuyoshi Okamoto (Concurrently holds the position of Director, Senior Corporate Advisor to Tokyo Gas Co., Ltd.)
Director (Outside)	Miharu Koezuka (Concurrently holds the position of Advisor to Takashimaya Co., Ltd.)

2. Executive Officers (Excludes persons with concurrent posts in the above 1. Directors)

Executive Vice President (Representative Executive Officer)	Toshihide Komatsu	Managing Executive Officer	Susumu Tanaka
Executive Vice President (Representative Executive Officer)	Yoshifumi Iwasaki	Managing Executive Officer	Nobuyasu Kato
Senior Managing Executive Officer	Noboru Ichikura	Executive Officer	Makoto Sakurai
Senior Managing Executive Officer	Kazuhide Kinugawa	Executive Officer	Tsutomu Shomura
Senior Managing Executive Officer	Atsuhiko Ikeda	Executive Officer	Mamiko Izumi
Senior Managing Executive Officer	Toru Inasawa	Executive Officer	Shinji Denishi
Senior Managing Executive Officer	Tetsuya Senda	Executive Officer	Noriko Kinoshita
Managing Executive Officer	Kenji Fukumoto	Executive Officer	Katsuhiko Sato
Managing Executive Officer	Kimihiko Oku	Executive Officer	Seiji Yukino
Managing Executive Officer	Yoshiharu Miyazaki	Executive Officer	Toshitaka Shima
Managing Executive Officer	Hiroaki Kawamoto	Executive Officer	Kozo Otaka
Managing Executive Officer	Kenji Ogata	Executive Officer	Nobuo Tsuruda
Managing Executive Officer	Chikashi Isayama	Executive Officer	Makoto Kazamatsuri
Managing Executive Officer	Kunio Tanigaki	Executive Officer	Hitoshi Arawaka

3. Nomination Committee

Chairperson	Akio Mimura
Member	Kunio Ishihara
Member	Masatsugu Nagato

4. Audit Committee

Chairperson	Tadashi Yagi
Member	Miwako Noma
Member	Norio Munakata
Member	Miharu Koezuka
Member	Riki Mukai

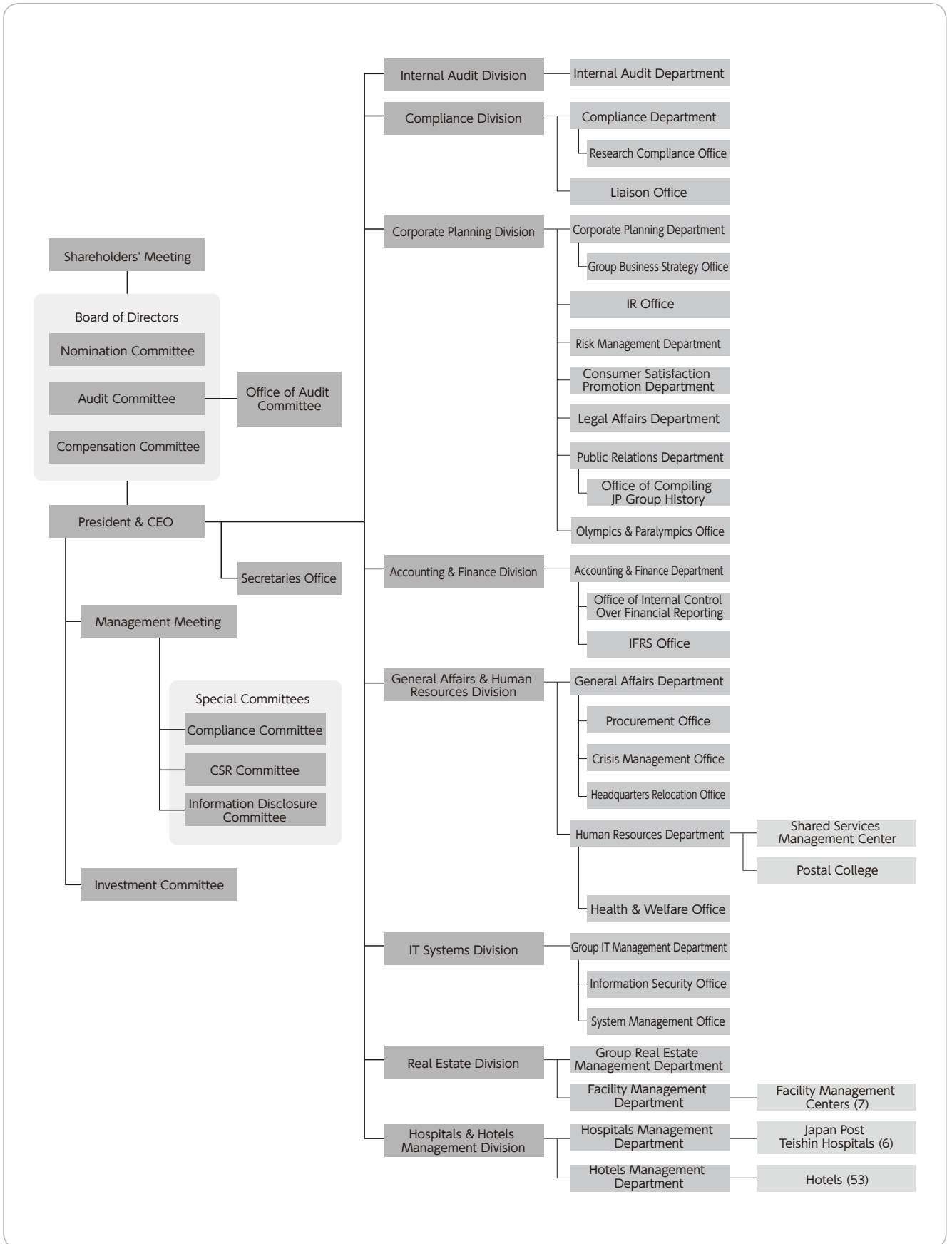
5. Compensation Committee

Chairperson	Tsuyoshi Okamoto
Member	Tadashi Yagi
Member	Masatsugu Nagato

5

Organization Chart

(As of July 1, 2018)



6

Principal Subsidiaries and Affiliates of Japan Post Holdings Co.

(As of March 31, 2018)

Affiliation	Company name	Location	Issued capital (millions)	Main business	Date of establishment	Percentage ownership of voting rights	
Consolidated subsidiaries	JAPAN POST Co., Ltd.	Chiyoda-ku, Tokyo	¥400,000	Postal and logistics business, financial services counter sales business	October 1, 2007	100.0%	
	Japan Post Transport Co., Ltd.	Minato-ku, Tokyo	¥18,250	Truck cargo transportation	November 30, 2007	100.0% (100.0%)	
	Japan Post Delivery Co., Ltd.	Chuo-ku, Tokyo	¥400	Collection and delivery of Yu-Pack and other items	April 1, 2014	100.0% (100.0%)	
	JAPAN POST MAINTENANCE Co., Ltd.	Koto-ku, Tokyo	¥50	Automobile maintenance and machinery maintenance business, product sales business, vehicle maintenance and management business	March 31, 1991	100.0% (100.0%)	
	JP Logi Service Co., Ltd.	Chuo-ku, Osaka-shi, Osaka	¥34	Preparation and posting of postal items, parcels and mail items	October 15, 1968	67.6% (67.6%)	
	JAPAN POST SANKYU GLOBAL LOGISTICS CO., LTD.	Chuo-ku, Tokyo	¥300	International air freight forwarding	July 1, 2008	60.0% (60.0%)	
	JP Biz Mail Co., Ltd.	Adachi-ku, Tokyo	¥100	Preparation and posting of postal items	February 1, 2006	58.5% (58.5%)	
	JP Media Direct Co., Ltd.	Minato-ku, Tokyo	¥300	Planning, development and sales of direct mail and contracted shipment of merchandise	February 29, 2008	51.0% (51.0%)	
	Tokyo Beiyu Co., Ltd.	Meguro-ku, Tokyo	¥22	Petroleum sales business	March 10, 1949	75.4% (75.4%)	
	Japan Post Trading Service Co., Ltd.	Koto-ku, Tokyo	¥100	Merchandise business, contracting business for merchandise operations	September 11, 2007	100.0% (100.0%)	
	Japan Post Building Management Co., Ltd.	Chiyoda-ku, Tokyo	¥150	Property management for commercial buildings	April 1, 2011	100.0% (100.0%)	
	Japan Post Communications Co., Ltd.	Minato-ku, Tokyo	¥350	Operations related to posting advertisements in post offices	August 8, 2014	100.0% (100.0%)	
	JAPAN POST OFFICE SUPPORT Co., Ltd.	Minato-ku, Tokyo	¥100	Merchandise sales, facilities management and contracting business	March 16, 1971	100.0% (100.0%)	
	JP GENERAL INSURANCE AGENCY Co., Ltd.	Chiyoda-ku, Tokyo	¥20	Non-life insurance and automobile liability insurance agency business	August 7, 1950	70.0% (70.0%)	
	JP MITSUKOSHI MERCHANDISING Co., Ltd.	Koto-ku, Tokyo	¥50	Mail-order business, wholesale, others	April 1, 2014	60.0% (60.0%)	
	YY Gift Co., Ltd.	Nishi-ku, Yokohama-shi, Kanagawa	¥20	Sales of catalog products, mail-order business, agency business for sales of alcohol	April 23, 1996	51.0% (51.0%)	
	JP TOKYO TOKUSENKAI Co., Ltd.	Taito-ku, Tokyo	¥30	Sales of catalog products, mail-order business	March 2, 2015	51.0% (51.0%)	
	Toll Holdings Limited	Melbourne, Australia	AUD2,978	Forwarding business, 3PL business, express business	June 20, 1986	100.0% (100.0%)	
	JAPAN POST BANK Co., Ltd.	Chiyoda-ku, Tokyo	¥3,500,000	Banking business	September 1, 2006	89.0%	
	Japan Post Investment Corporation	Chiyoda-ku, Tokyo	¥750	Banking business (securities investment management business)	February 9, 2018	75.0% (75.0%) [25.0%]	
	JAPAN POST INSURANCE Co., Ltd.	Chiyoda-ku, Tokyo	¥500,000	Life insurance business	September 1, 2006	89.0%	
	JAPAN POST INSURANCE SYSTEM SOLUTIONS Co., Ltd.	Shinagawa-ku, Tokyo	¥500	Life insurance businesses (commissioning of design, development, maintenance and operation of information systems)	March 8, 1985	100.0% (100.0%)	
	JAPAN POST STAFF Co., Ltd.	Minato-ku, Tokyo	¥640	Others (temporary staffing service, contracted business)	July 3, 2007	100.0%	
	YUSEI CHALLENGED CO., Ltd.	Setagaya-ku, Tokyo	¥5	Other businesses (office cleaning)	November 20, 2007	100.0%	
	Japan Post Hotel Service Co., Ltd.	Chuo-ku, Saitama-shi, Saitama	¥39	Other businesses (contracted hotel management)	December 25, 1996	100.0%	
	Japan Post Information Technology Co., Ltd.	Shinjuku-ku, Tokyo	¥3,150	Other businesses (communication network maintenance and management)	January 30, 1987	100.0%	
	Japan Post Capital Co., Ltd.	Chiyoda-ku, Tokyo	¥1,500	Other businesses (investment business, consulting business for management and financial matters)	November 1, 2017	100.0%	
	JP TOWAY CONTACT Co., Ltd.	Nishi-ku, Osaka-shi, Osaka	¥182	Others (telemarketing services)	April 18, 1988	82.9% (82.9%)	
		and 236 other companies					

Affiliation	Company name	Location	Issued capital (millions)	Main business	Date of establishment	Percentage ownership of voting rights
Affiliated companies accounted for under the equity method	SAISON ASSET MANAGEMENT Co., Ltd.	Toshima-ku, Tokyo	¥1,000	Type II financial instruments business operation and investment trust management business, others	June 12, 2006	40.0% (40.0%)
	JA FOODS OITA CO., LTD.	Kitsuki-shi, Oita	¥493	Processing and sales of agricultural products, fruits and vegetables	December 2, 1991	20.0% (20.0%)
	RINGBELL Co., Ltd.	Chuo-ku, Tokyo	¥354	Planning, production and sales of gift catalogs, others	July 3, 1987	20.0% (20.0%)
	JP Asset Management Co., Ltd.	Chuo-ku, Tokyo	¥500	Type II financial instruments business operation and investment management business (investment trust management business)	August 18, 2015	50.0% (50.0%)
	SDP Center Co., Ltd.	Chuo-ku, Tokyo	¥2,000	Banking business (bank agency operations)	May 28, 1980	45.0% (45.0%)
	ATM Japan Business Service, Ltd.	Minato-ku, Tokyo	¥100	Banking business (ATM cash loading and collection as well as ATM management)	August 30, 2012	35.0% (35.0%)
	and 16 other companies					

Note: The figures in parentheses in the column showing percentage ownership of voting rights indicate the percentage of indirect ownership (within parentheses) through subsidiaries. The figures in brackets indicate "Those parties deemed to exercise voting rights for the same details as their own intentions because of the close relationships between themselves and investments, personnel, capital, technologies, business transactions, etc." or "Those parties that agree to exercise voting rights for the same details as their own intentions" (outside the parentheses).

2. Outline of Japan Post Co., Ltd.

1 Company Outline

Company name (in Japanese):	Nippon Yubin Kabushiki Kaisha
Company name:	JAPAN POST Co., Ltd.
Head office location:	3-2, Kasumigaseki 1-chome, Chiyoda-ku, Tokyo 100-8798, Japan
Telephone:	03-3504-4411 (Japan Post Group main number)
Paid-in capital:	¥400 billion
Date of establishment:	October 1, 2007
Legal basis:	Established under the Japan Post Co., Ltd. Act (Law No. 100 of October 21, 2005)
Lines of business:	Postal operations; banking counter operations; insurance counter operations; sales of documentary stamps; operations consigned by local government entities; bank and life and non-life insurance agency services other than those mentioned previously; domestic distribution and delivery business and international cargo transport and agency services for air cargo business; logistics business; real estate business; and merchandise sales

2 Management Philosophy

Management Philosophy

"Japan Post Co., Ltd. will fully utilize its resources that include its post office and delivery networks covering every corner of the country to provide safe, reliable and fast services tailored to the needs of each community while contributing to the realization of a society with an abundance of human contact by supporting people's lifestyles throughout their entire lives."

- We will provide the basic postal services of postal, banking and insurance services extensively across the country into the future.
- We will take on the challenge of providing innovative services that respond accurately to changes in society and enrich people's lives.
- We will fulfill our responsibilities as a corporate citizen by establishing corporate governance systems and strictly implementing compliance.
- Each and every employee will continue to grow to ensure we are appreciated by our customers and trusted and respected by local communities.

3 Information on Shares

(as of March 31, 2018)

1. Number of Shares

Total shares issued	10,000,000
---------------------	------------

2. Shareholder

Japan Post Holdings Co., Ltd.	Condition of holdings	
	Shares owned	Percentage of total issued
	10,000,000	100%

4 Number of Employees

193,910* (as of March 31, 2018)

* The number of employees excludes employees assigned to other companies by Japan Post Co., Ltd. but includes employees assigned to Japan Post Co., Ltd. by other companies. The figures do not include part-time employees (including the indefinite-term employees (associates) based on the indefinite-term employment conversion system).

(As of July 1, 2018)

1. Directors

Chairman	Toru Takahashi
President & CEO (Representative Executive Officer)	Kunio Yokoyama (Concurrently holds the position of Director of Japan Post Holdings Co., Ltd.)
Senior Executive Vice President (Representative Director)	Tomohiro Yonezawa
Director	Yasuo Suzuki (Concurrently holds the position of Representative Director and Senior Executive Vice President of Japan Post Holdings Co., Ltd.)
Director	Masatsugu Nagato (Concurrently holds the position of Representative Executive Officer and President & CEO of Japan Post Holdings Co., Ltd.)
Director (Outside)	Risa Tanaka (Concurrently holds the position of President of The Graduate School of Project Design and Director of Media and Information of Sendenkaigi Co., Ltd.)
Director (Outside)	Kaori Sasaki (Concurrently holds the position of President and CEO of ewoman, Inc.)
Director (Outside)	Yoshikuni Sugiyama (Concurrently holds the position of Representative Director and President of Yomiuri Land Co., Ltd.)
Director (Outside)	Takako Suwa (Concurrently holds the position of Representative Director of Daiya Seiki Co. Ltd.)
Director (Outside)	Toyohiko Takabe (Formerly held the position of Representative Director and President of Nippon Telegraph and Telephone Corporation)
Director (Outside)	Akira Nokina (Concurrently holds the position of Representative Director and Vice President of Jyoko Securities Co., Ltd.)

2. Audit and Supervisory Board Member

Mitsuyuki Yamamoto
Toshiyuki Takano
Hiroshi Shidehara
Masayasu Oguro

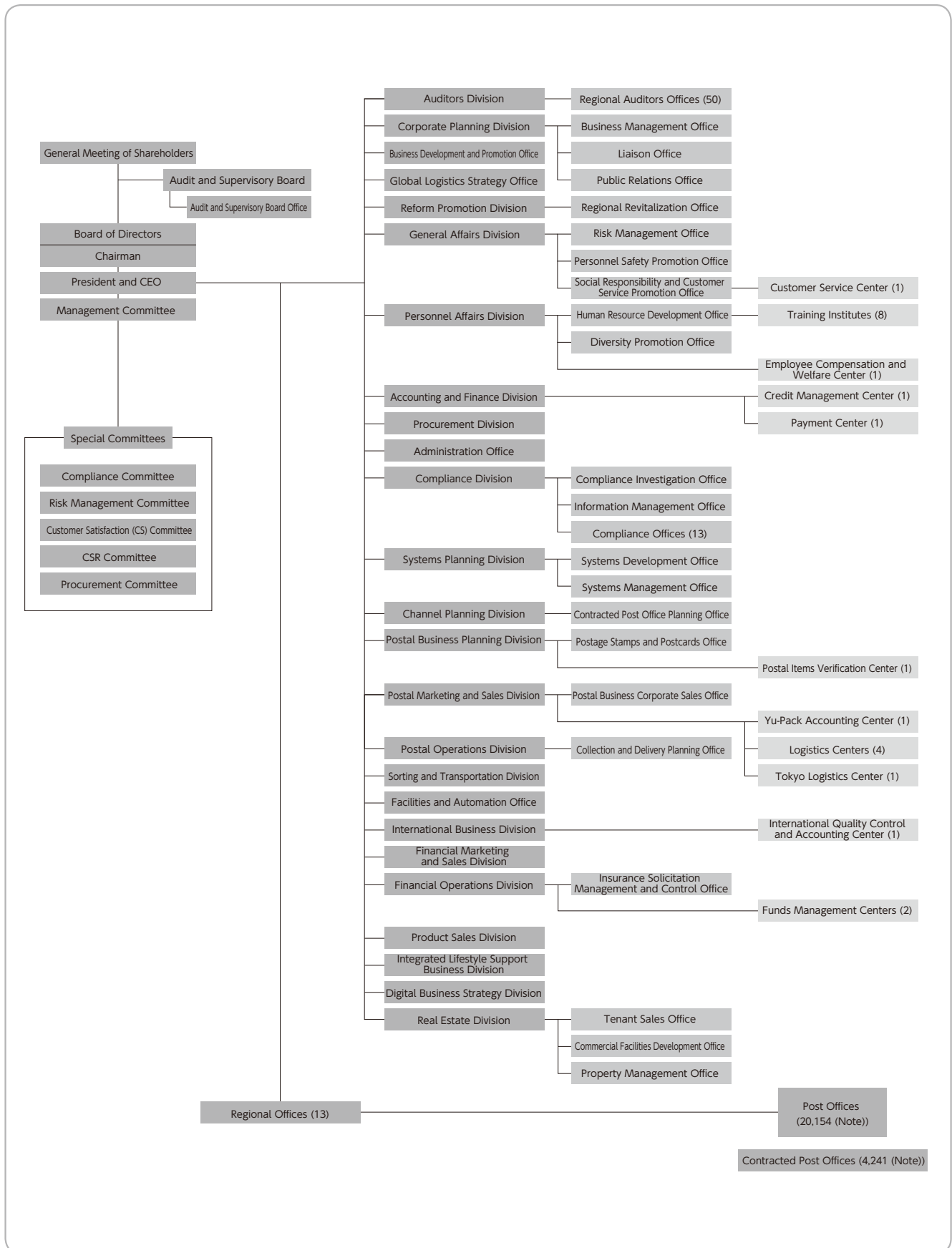
3. Executive Officers

Vice President (Concurrently holds the position of Managing Executive Officer of Japan Post Holdings Co., Ltd.)	Chikashi Isayama	Executive Officer (Concurrently holds the position of Executive Officer of Japan Post Holdings Co., Ltd.)	Hitoshi Arawaka (Concurrently holds the position of Executive Officer of Japan Post Holdings Co., Ltd.)
Vice President (Concurrently holds the position of Managing Executive Officer of Japan Post Holdings Co., Ltd.)	Kunio Tanigaki	Executive Officer	Masahiko Metoki
First Executive Officer	Makoto Osawa	Executive Officer	Atsushi Fuchie
First Executive Officer	Taneki Ono	Executive Officer	Kanako Asami
First Executive Officer	Yoshinori Suzuki	Executive Officer	Koji Kamiozaki
First Executive Officer	Yoshiyuki Higuchi	Executive Officer	Katsuyo Yamazaki
Senior Executive Officer	Tsunehiko Matsuyama	Executive Officer	Akihito Nishiguchi
Senior Executive Officer	Ryutaro Yamamoto	Executive Officer	Hiroaki Yasuda
Senior Executive Officer	Satoru Tatebayashi	Executive Officer	Yasuhiro Takahashi
Senior Executive Officer	Norio Wakasa	Executive Officer	Atsushi Hasegawa
Senior Executive Officer (Concurrently holds the position of Managing Executive Officer of Japan Post Holdings Co., Ltd.)	Yoshiharu Miyazaki	Executive Officer	Kazuyuki Negishi
Senior Executive Officer	Satoshi Higashikozono	Executive Officer	Michio Kaneko
Senior Executive Officer	Kimikazu Sano	Executive Officer	Shinya Koike
		Executive Officer	Masaaki Yamazaki

6

Organization Chart

(As of July 1, 2018)



Note: The number of directly managed post offices and contracted post offices is as of March 31, 2018.

3. Outline of Japan Post Bank Co., Ltd.

1 Company Outline

Company name (in Japanese):	Kabushiki Kaisha Yucho Ginko
Company name:	JAPAN POST BANK Co., Ltd.
Head office location:	3-2, Kasumigaseki 1-chome, Chiyoda-ku, Tokyo 100-8798, Japan
Telephone:	03-3504-4411 (Japan Post Group main number)
Paid-in capital:	¥3,500 billion
Date of establishment:	September 1, 2006 (On October 1, 2007, the name was changed from Yucho Co., Ltd. to Japan Post Bank Co., Ltd.)
Line of business:	Banking
Financial institution code number:	9900

2 Management Philosophy

Management Philosophy

Japan Post Bank Co. aims to become "the most accessible and trustworthy bank in Japan," guided by the needs and expectations of our customers.

Trust:	We comply with laws, regulations, and other standards of behavior and value trusted relationships with customers, markets, shareholders, and employees and consistently serve as a responsible corporate citizen.
Innovation:	We work sincerely to improve our management and business operations in response to requests from customers and changes in the business environment.
Efficiency:	We pursue improvements in speed and efficiency of our management and business operations in order to provide customer-oriented financial instruments and services.
Expertise:	We continually strive to strengthen our expertise for the aim of services meeting the expectations of our customers.

3 Information on Shares

(as of March 31, 2018)

1. Number of Shares

Total shares issued	4,500,000,000
---------------------	---------------

2. Major Shareholders

		Shares owned	Percentage of total issued (%)
1	Japan Post Holdings Co., Ltd.	3,337,032,700	74.15
2	Japan Trustee Services Bank, Ltd. (Trust Account)	23,294,900	0.51
3	The Master Trust Bank of Japan, Ltd. (Trust Account)	19,563,100	0.43
4	Japan Trustee Services Bank, Ltd. (Trust Account 5)	10,680,400	0.23
5	Japan Trustee Services Bank, Ltd. (Trust Account 9)	8,342,200	0.18
6	Japan Trustee Services Bank, Ltd. (Trust Account 1)	7,997,100	0.17
7	Japan Trustee Services Bank, Ltd. (Trust Account 2)	7,901,700	0.17
8	Japan Post Bank Employee Shareholding Association	7,196,000	0.15
9	STATE STREET BANK WEST CLIENT - TREATY 505234	7,063,358	0.15
10	THE BANK OF NEW YORK, TREATY JASDEC ACCOUNT	6,301,200	0.14

Note 1: Japan Post Bank Co. holds 750,524,950 shares of treasury stock (16.67% of total issued), which are not included in the above list of major shareholders.

Note 2: The number of treasury stock does not include shares owned by the employee stock ownership trust (544,400 shares).

Note 3: Percentage of total issued has been rounded down to the second decimal place.

4 Number of Employees

13,009* (as of March 31, 2018)

* The number of employees excludes employees assigned to other companies by Japan Post Bank Co., Ltd. but includes employees assigned to Japan Post Bank Co., Ltd. by other companies. The figures do not include part-time employees (including the indefinite-term employees (associates) based on the indefinite-term employment conversion system).

(As of July 1, 2018)

1. Board of Directors

President and Representative Executive Officer.....	Norito Ikeda (Concurrently holds the position of Director of Japan Post Holdings Co., Ltd.)
Representative Executive Vice President.....	Susumu Tanaka (Concurrently holds the position of Managing Executive Officer of Japan Post Holdings Co., Ltd.)
Director	Masatsugu Nagato (Concurrently holds the position of Director and Representative Executive Officer and President & CEO of Japan Post Holdings Co., Ltd.)
Director	Ryoichi Nakazato
Outside Director	Tomoyoshi Arita (Attorney-at-Law)
Outside Director	Sawako Nohara (Concurrently holds the position of President and CEO of IPSe Marketing, Inc.)
Outside Director	Tetsu Machida (Independent Economic Journalist)
Outside Director	Nobuko Akashi (Concurrently holds the position of Board chairman of a non-profit organization, Japan Manners & Protocol Association)
Outside Director	Katsuaki Ikeda (Formerly held the position of Corporate Auditor of MS&AD Insurance Group Holdings, Inc.)
Outside Director	Hirofumi Nomoto (Concurrently holds the position of President & Representative Director of Tokyu Corporation)
Outside Director	Ryoji Chubachi (Concurrently holds the position of President of National Institute of Advanced Industrial Science and Technology)

2. Executive Officers (Excludes persons with concurrent posts in the above 1. Board of Directors)

Executive Vice President	Yoshinori Hagino	Executive Officer	Yoko Makino
Senior Managing Executive Officer	Masahiro Murashima	Executive Officer	Kunihiko Amaha
Senior Managing Executive Officer	Hiroichi Shishimi	Executive Officer	Makoto Shinmura
Senior Managing Executive Officer	Kunio Tahara	Executive Officer	Satoru Ogata
Managing Executive Officer	Masahiro Nishimori	Executive Officer	Toshiharu Ono
Managing Executive Officer	Masaya Aida	Executive Officer	Shigeyuki Sakurai
Managing Executive Officer	Harumi Yano	Executive Officer	Masatoshi Ishii
Managing Executive Officer	Suzunori Hayashi	Executive Officer	Takayuki Tanaka
Managing Executive Officer	Atsuko Onodera	Executive Officer	Shinobu Nagura
Managing Executive Officer	Kenichi Kozuka	Executive Officer	Ikuyo Kondo
Managing Executive Officer	Masato Tamaki	Executive Officer	Toshiyuki Yazaki
Managing Executive Officer	Minoru Kotouda	Executive Officer	Nobuhiro Fukuoka
		Executive Officer	Ryotaro Yamada

3. Nomination Committee

Chairman	Masatsugu Nagato
Member	Tomoyoshi Arita
Member	Hirofumi Nomoto
Member	Ryoji Chubachi

4. Audit Committee

Chairman	Tomoyoshi Arita
Member	Ryoichi Nakazato
Member	Sawako Nohara
Member	Tetsu Machida
Member	Katsuaki Ikeda

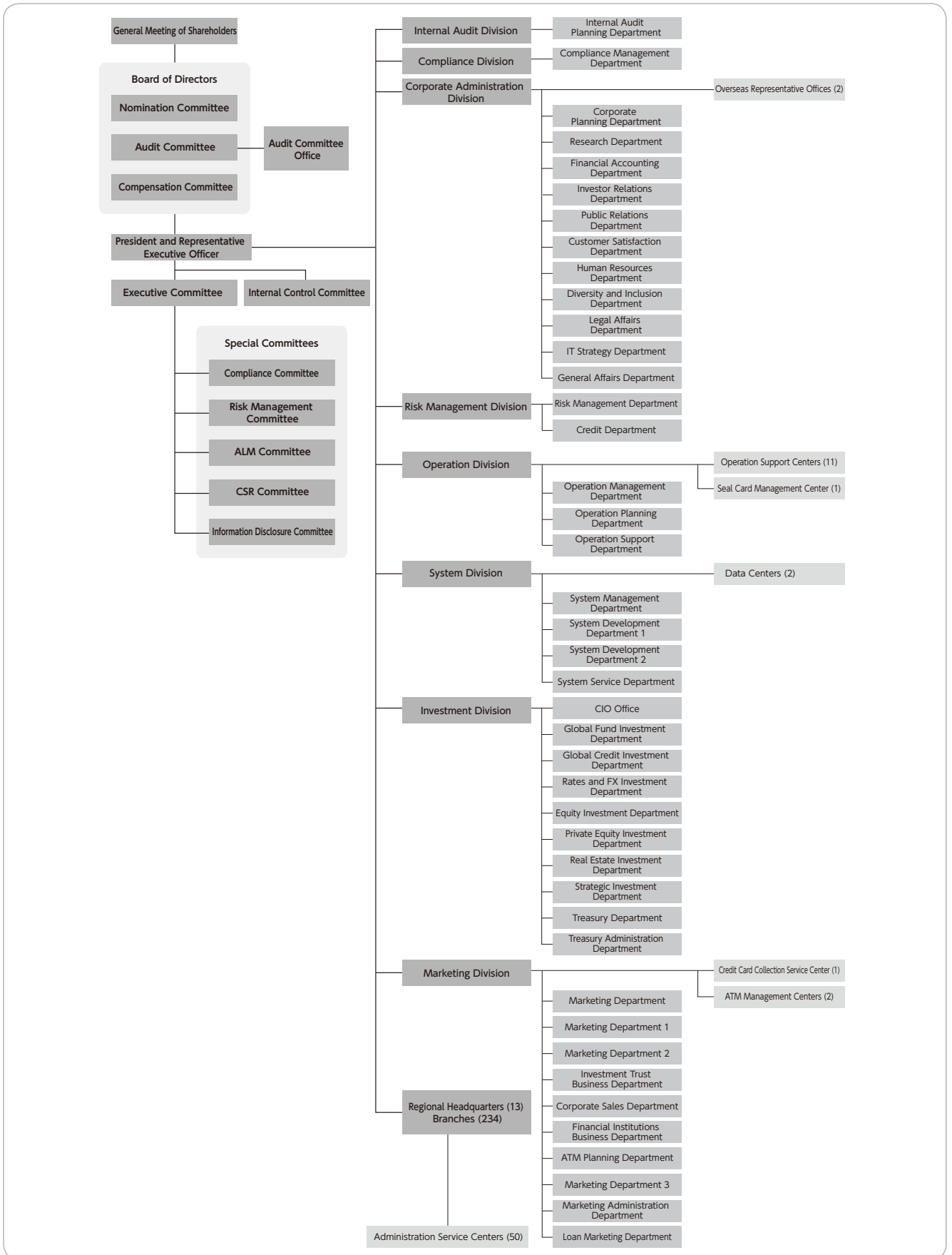
5. Compensation Committee

Chairman	Hirofumi Nomoto
Member	Masatsugu Nagato
Member	Katsuaki Ikeda
Member	Ryoji Chubachi

6

Organization Chart

(As of July 1, 2018)



4. Outline of Japan Post Insurance Co., Ltd.

1 Company Outline

Company name (in Japanese) : Kabushiki Kaisha Kanpo Seimei Hoken
Company name: JAPAN POST INSURANCE Co., Ltd.
Head office location: 3-2, Kasumigaseki 1-chome, Chiyoda-ku, Tokyo 100-8798, Japan
Telephone: 03-3504-4411 (Japan Post Group main number)
Paid-in capital: ¥500 billion
Date of establishment: September 1, 2006
(The name of the company was changed from Kampo Co., Ltd. to Japan Post Insurance Co., Ltd., on October 1, 2007.)
Line of business: Life insurance

2 Management Philosophy and Management Policy

Management Philosophy

Be a trustful partner for people, always being close at hand and endeavoring to protect their well-being.

Management Policy

We aim to become the No.1 Japanese insurance company selected by customers.

1. We are always close to people's lives, offering easy-to-understand products and high-quality services.
2. We always ensure that employees who have contact with our customers make full use of their strengths to offer better customer services.
3. We create a working environment in which all employees can develop their talents and work with energy and vitality.
4. We practice sound management based on strong corporate governance, constantly creating new value to achieve sustainable growth.
5. We actively contribute to health promotion, environmental protection, and the development of local communities and society as a whole.
6. We work to communicate closely with all stakeholders.

3 Information on Stocks

(as of March 31, 2018)

1. Number of Shares

Issued stocks	600,000,000
---------------	-------------

2. Major Shareholders

	Investments in Japan Post Insurance Co., Ltd.	
	Number of stocks held (thousands of shares)	Ratio of number of stocks held (%)
Japan Post Holdings Co., Ltd.	534,000	89.00
Japan Trustee Services Bank, Ltd. (Trust Account)	3,706	0.62
The Master Trust Bank of Japan, Ltd. (Trust Account)	2,377	0.40
Japan Post Insurance Employee Shareholding Association	2,022	0.34
THE BANK OF NEW YORK - JASDECNON - TREATY ACCOUNT	1,577	0.26
Japan Trustee Services Bank, Ltd. (Trust Account 5)	1,424	0.24
Japan Trustee Services Bank, Ltd. (Trust Account 2)	1,062	0.18
Japan Trustee Services Bank, Ltd. (Trust Account 1)	1,058	0.18
Japan Trustee Services Bank, Ltd. (Trust Account 9)	898	0.15
JP MORGAN CHASE BANK 385151	890	0.15

Note 1: Number of stocks held has been truncated without rounding.

Note 2: The shareholding ratio is expressed rounding off to two decimal points.

4

Number of Employees

7,490* (as of March 31, 2018)

* The number of employees excludes employees assigned to other companies by Japan Post Insurance Co., Ltd. but includes employees assigned to Japan Post Insurance Co., Ltd. by other companies. The figures do not include part-time employees (including the indefinite-term employees (associates) based on the indefinite-term employment conversion system).

5

List of Directors, Executive Officers and Management Committees

1. Directors

(As of July 1, 2018)

Director and President, CEO, Representative Executive Officer	Mitsuhiro Uehira	(Concurrently holds the position of Director, Japan Post Holdings Co., Ltd.)
Director and Deputy President, Representative Executive Officer	Masaaki Horigane	
Director	Yasuhiro Sadayuki	
Director	Masatsugu Nagato	(Concurrently holds the position of Representative Executive Officer, President & CEO, Japan Post Holdings Co., Ltd.)
Outside Director	Shinji Hattori	(Concurrently holds the position of Chairman & Group CEO, Seiko Holdings Corporation)
Outside Director	Masako Suzuki	(Concurrently holds the position of Director, Vice President, Benefit One Inc.)
Outside Director	Tamotsu Saito	(Concurrently holds the position of Chairman of the Board of IHI Corporation)
Outside Director	Michiaki Ozaki	(Attorney-at-law)
Outside Director	Meyumi Yamada	(Concurrently holds the position of Executive Director of istyle Inc.)
Outside Director	Yoshie Komuro	(Concurrently holds the position of President of Work-Life Balance Co., Ltd.)
Outside Director	Kazuyuki Harada	(Concurrently holds the position of President & Representative Director of Keikyu Corporation)

2. Executive Officers (Excludes persons holding concurrent posts in addition to the above. 1. Directors)

Senior Managing Executive Officer	Yoshito Horie	Executive Officer	Kieko Onoki
Senior Managing Executive Officer	Yoshihiko Ido	Executive Officer	Toru Onishi
Managing Executive Officer	Yoshio Inoue	Executive Officer	Hidekazu Sakamoto
Managing Executive Officer	Hiroshi Nagaso	Executive Officer	Junko Koie
Managing Executive Officer	Atsushi Tachibana	Executive Officer	Masamichi Yokoyama
Managing Executive Officer	Shinji Ando	Executive Officer	Motonori Tanaka
Managing Executive Officer	Nobuyasu Kato	Executive Officer	Masato Hashiba
(Concurrently holds the position of Managing Executive Officer, Japan Post Holdings Co., Ltd.)			
Managing Executive Officer	Yasuaki Hironaka	Executive Officer	Takashi Iida
Managing Executive Officer	Tomoaki Nara	Executive Officer	Shinsuke Fujii
Managing Executive Officer	Nobuatsu Uchikoba	Executive Officer	Norihiro Fujimori
Managing Executive Officer	Yasumi Suzukawa	Executive Officer	Hajime Saito
Managing Executive Officer	Yoshiki Miyanishi		
Managing Executive Officer	Michiko Matsuda		

3. Nomination Committee

Chairman	Masatsugu Nagato
Member	Shinji Hattori
Member	Kazuyuki Harada

4. Audit Committee

Chairman	Michiaki Ozaki
Member	Yasuhiro Sadayuki
Member	Masako Suzuki
Member	Meyumi Yamada

5. Compensation Committee

Chairman	Tamotsu Saito
Member	Masatsugu Nagato
Member	Shinji Hattori

6

Organization Chart

(As of July 1, 2018)

