

Corporate Data

CONTENTS

1. Outline of Japan Post Holdings Co., Ltd.

1. Company Outline	94	6. Principal Subsidiaries and Affiliates of Japan Post Holdings	97
2. Information on Shares.....	94	7. Teishin Hospitals.....	98
3. Number of Employees	94	8. Hotels	99
4. List of Directors, Executive Officers and Management Committees	95	9. History of the Japan Post Group	101
5. Organization Chart	96		

2. Outline of Japan Post Co., Ltd.

1. Company Outline	103	8. Post Offices by Prefecture	107
2. Management Philosophy	103	9. Principal Subsidiaries	109
3. Information on Shares.....	103	10. Number of Post Boxes	109
4. Number of Employees	103	11. Outsourcing	109
5. List of Directors, Auditors and Executive Officers	104	12. Number of Locations Selling Postage Stamps and Documentary Stamps	110
6. Organization Chart	105	13. Number of Postal Service Vehicles Owned ...	110
7. Names and Locations of Regional Offices.....	106		

3. Outline of Japan Post Bank Co., Ltd.

1. Company Outline	111	6. Organization Chart.....	113
2. Management Philosophy	111	7. Principal Business Locations	114
3. Information on Shares.....	111	8. Japan Post Bank Offices by Prefecture	114
4. Number of Employees	111	9. Number of ATMs by Prefecture	115
5. List of Directors, Executive Officers and Management Committees	112	10. Outline of Affiliated Companies	115

4. Outline of Japan Post Insurance Co., Ltd.

1. Company Outline	116	6. Organization Chart	118
2. Management Philosophy	116	7. Principal Branches.....	119
3. Information on Shares.....	116	8. Outline of Subsidiary	119
4. Number of Employees	117		
5. List of Directors, Executive Officers and Management Committees	117		

1. Outline of Japan Post Holdings Co., Ltd.

1 Company Outline

Company name (in Japanese):	Nippon Yusei Kabushiki Kaisha
Company name:	JAPAN POST HOLDINGS Co., Ltd.
Head office location:	3-2, Kasumigaseki 1-chome, Chiyoda-ku, Tokyo 100-8798, Japan
Telephone:	03-3504-4411 (Japan Post Group main number)
Paid-in capital:	¥3,500 billion
Date of establishment:	January 23, 2006
Legal basis:	Established under the Japan Post Holdings Co., Ltd. Act (Law No. 98 of October 21, 2005)
Lines of business:	Strategy formulation of Group management

2 Information on Shares

(as of March 31, 2015)

1. Number of Shares

Authorized number of shares	600,000,000
Total shares issued	150,000,000
Number of shareholders as of March 31, 2015	One

2. Shareholder

Minister of Finance	Condition of holdings	
	Shares owned	Percentage of total issued
	150,000,000	100%

3. Information on Rights to Purchase New Shares, etc.

None outstanding

3 Number of Employees

2,951* (as of March 31, 2015)

* The number of employees excludes employees assigned to other companies by Japan Post Holdings Co., Ltd. but includes employees assigned to Japan Post Holdings Co., Ltd. by other companies. The figures do not include part-time employees.

(As of July 1, 2015)

1. Directors

President & CEO (Representative Executive Officer).....	Taizo Nishimuro (Concurrently holds the positions of Director of Japan Post Co., Ltd., Director of Japan Post Bank Co., Ltd., and Director of Japan Post Insurance Co., Ltd.)
Senior Executive Vice President (Representative Director)...	Yasuo Suzuki (Concurrently holds the position of Director of Japan Post Co., Ltd.)
Executive Vice President (Representative Director).....	Tatsuo Soda
Executive Vice President (Representative Director).....	Susumu Atsuki
Executive Vice President (Representative Director).....	Toshihide Komatsu
Director	Masami Ishii (Concurrently holds the position of President & CEO of Japan Post Insurance Co., Ltd.)
Director	Toru Takahashi (Concurrently holds the position of President & CEO of Japan Post Co., Ltd.)
Director	Masatsugu Nagato (Concurrently holds the position of President & CEO of Japan Post Bank Co., Ltd.)
Director (Outside)	Haruo Kasama (Attorney-at-Law)
Director (Outside)	Keiji Kimura (Concurrently holds the position of Chairman & Representative Director of Mitsubishi Estate Co., Ltd.)
Director (Outside)	Miwako Noma (Concurrently holds the position of Representative Director of Nippongurashi Co., Ltd.)
Director (Outside)	Fujio Mitarai (Concurrently holds the position of Chairman & CEO of Canon Inc.)
Director (Outside)	Akio Mimura (Concurrently holds the position of Senior Adviser and Honorary Chairman of Nippon Steel & Sumitomo Metal Corporation)
Director (Outside)	Tadashi Yagi (Concurrently holds the position of Auditor of Kyodo News)
Director (Outside)	Fumiaki Watari (Concurrently holds the position of Honorary Adviser of JX Holdings, Inc. and President & Representative Director of Private Finance Initiative Promotion Corporation of Japan)
Director (Outside)	Satoshi Seino (Concurrently holds the position of Chairman (Director) of East Japan Railway Company)
Director (Outside)	Kunio Ishihara (Concurrently holds the position of Adviser of Tokio Marine & Nichido Fire Insurance Co., Ltd.)
Director (Outside)	Yasuo Inubushi (Concurrently holds the position of Honorary Adviser of Kobe Steel, Ltd.)

2. Executive Officers (Excludes persons with concurrent posts in the above 1. Directors)

Senior Managing Executive Officer	Kunio Tanigaki	Executive Officer	Kimihiko Oku
Senior Managing Executive Officer	Seiji Katsuno	Executive Officer	Susumu Inoue (Concurrently holds the position of Executive Officer of Japan Post Co., Ltd.)
Managing Executive Officer	Masayuki Nakayama	Executive Officer	Makoto Sakurai
Managing Executive Officer	Kenji Fukumoto	Executive Officer	Atsuko Onodera
Managing Executive Officer	Ryosuke Haraguchi	Executive Officer	Yoshiharu Miyazaki
Managing Executive Officer	Noboru Ichikura	Executive Officer	Hidetake Kikuhara
Managing Executive Officer	Toru Inasawa (Concurrently holds the position of Senior Managing Executive Officer of Japan Post Co., Ltd.)	Executive Officer	Katsuyuki Takahashi
Managing Executive Officer	Satoru Tatebayashi (Concurrently holds the position of Senior Executive Officer of Japan Post Co., Ltd.)	Executive Officer	Tsutomu Shomura
Managing Executive Officer	Susumu Tanaka (Concurrently holds the position of Representative Executive Vice President of Japan Post Bank Co., Ltd.)	Executive Officer	Mamiko Izumi
Managing Executive Officer	Tetsuya Senda (Concurrently holds the position of Managing Executive Officer of Japan Post Insurance Co., Ltd.)	Executive Officer	Mitsuyuki Yamamoto
		Executive Officer	Katsumi Amano
		Executive Officer	Shinji Denishi
		Executive Officer	Masamichi Moribe

3. Nomination Committee

Chairperson	Akio Mimura
Member	Taizo Nishimuro
Member	Fujio Mitarai

4. Audit Committee

Chairperson	Haruo Kasama
Member	Miwako Noma
Member	Tadashi Yagi

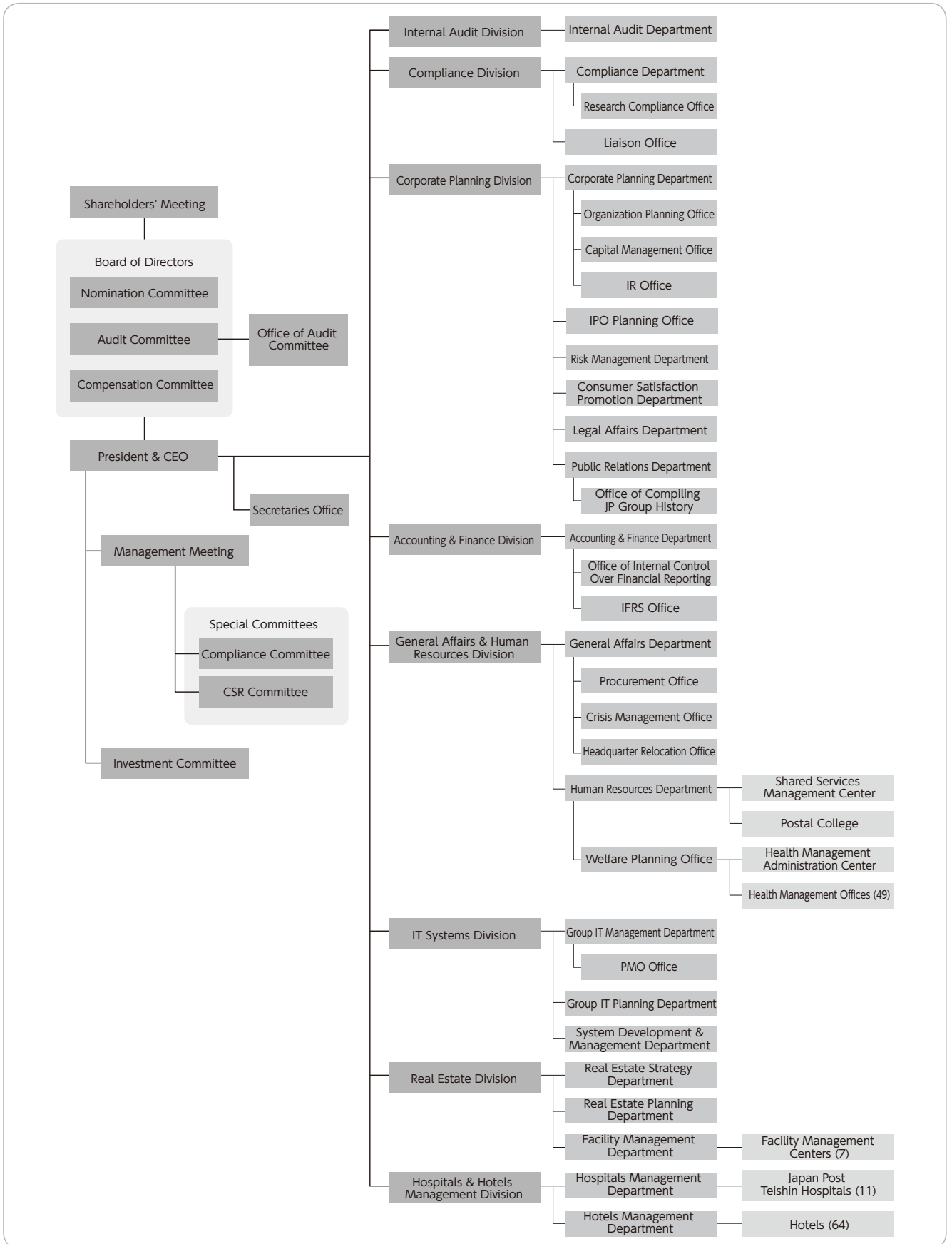
5. Compensation Committee

Chairperson	Taizo Nishimuro
Member	Haruo Kasama
Member	Fumiaki Watari

5

Organization Chart

(As of July 1, 2015)



6

Principal Subsidiaries and Affiliates of Japan Post Holdings

(As of March 31, 2015)

Affiliation	Company name	Location	Issued capital (millions)	Main business	Date of establishment	Percentage ownership of voting rights
Consolidated subsidiaries	JAPAN POST Co., Ltd.	Chiyoda-ku, Tokyo	¥400,000	Postal and logistics business, financial services counter sales business	October 1, 2007	100.0% (0.0%)
	Japan Post Transport Co., Ltd.	Minato-ku, Tokyo	¥18,250	Truck cargo transportation	November 30, 2007	100.0% (100.0%)
	JAPAN POST International Logistics Co., Ltd.	Shanghai, China	CNY50	Agency services for international freight forwarding	September 6, 2013	100.0% (100.0%)
	Japan Post Delivery Co., Ltd.	Chuo-ku, Tokyo	¥400	Collection of Yu-Pack	April 1, 2014	100.0% (100.0%)
	Japan Post Finance Co., Ltd.	Shinjuku-ku, Tokyo	¥400	Credit settlement service, contracted payment collection services	April 1, 2014	85.1% (85.1%)
	JP Logi Service Co., Ltd.	Chuo-ku, Osaka-shi, Osaka	¥34	Preparation and posting of postal items	October 15, 1968	67.6% (67.6%)
	JP Biz Mail Co., Ltd.	Adachi-ku, Tokyo	¥100	Preparation and posting of postal items	February 1, 2006	58.5% (58.5%)
	JAPAN POST SANKYU GLOBAL LOGISTICS CO., LTD.	Chuo-ku, Tokyo	¥300	Consigned freight forwarding business	July 1, 2008	60.0% (60.0%)
	JP Media Direct Co., Ltd.	Minato-ku, Tokyo	¥300	Product development of mail media	February 29, 2008	51.0% (51.0%)
	Japan Post Trading Service Co., Ltd.	Koto-ku, Tokyo	¥100	Outsourcing services of catalog products ordering	September 11, 2007	100.0% (100.0%)
	Japan Post Building Management Co., Ltd.	Chiyoda-ku, Tokyo	¥150	Property management for buildings	April 1, 2011	100.0% (100.0%)
	Japan Post Communications Co., Ltd.	Minato-ku, Tokyo	¥350	Operations related to sales of advertising media	August 8, 2014	100.0% (100.0%)
	JAPAN POST OFFICE SUPPORT Co., Ltd.	Minato-ku, Tokyo	¥180	Merchandise sales operation, others	March 16, 1971	84.9% (84.9%)
	JP MITSUKOSHI MERCHANDISING Co., Ltd.	Koto-ku, Tokyo	¥50	Mail-order business, wholesale, others	April 1, 2014	60.0% (60.0%)
	YY Gift Co., Ltd.	Nishi-ku, Yokohama-shi, Kanagawa	¥20	Mail-order of gift catalogs	April 23, 1996	51.0% (51.0%)
	JP TOKYO TOKUSENKAI Co., Ltd.	Taito-ku, Tokyo	¥30	Sales of catalog products, mail-order business, others	March 2, 2015	51.0% (51.0%)
	JAPAN POST BANK Co., Ltd.	Chiyoda-ku, Tokyo	¥3,500,000	Banking business	September 1, 2006	100.0% (0.0%)
	JAPAN POST INSURANCE Co., Ltd.	Chiyoda-ku, Tokyo	¥500,000	Life insurance business	September 1, 2006	100.0% (0.0%)
	JAPAN POST INSURANCE SYSTEM SOLUTIONS Co., Ltd.	Meguro-ku, Tokyo	¥60	Information system-related business	March 8, 1985	100.0% (100.0%)
	JAPAN POST STAFF Co., Ltd.	Minato-ku, Tokyo	¥640	Temporary staffing service	July 3, 2007	100.0% (0.0%)
YUSEI CHALLENGED Co., Ltd.	Setagaya-ku, Tokyo	¥5	Office cleaning	November 20, 2007	100.0% (0.0%)	
Japan Post Hotel Service Co., Ltd.	Chuo-ku, Saitama-shi, Saitama	¥39	Contracted hotel management	December 26, 1996	100.0% (0.0%)	
Japan Post Information Technology Co., Ltd.	Minato-ku, Tokyo	¥3,150	Communication network maintenance and management	January 30, 1987	100.0% (0.0%)	
Affiliated companies accounted for under the equity method	SDP Center Co., Ltd.	Chuo-ku, Tokyo	¥2,000	Outsourcing services including mortgage loans	May 28, 1980	45.0% (45.0%)
	SAISON ASSET MANAGEMENT Co., Ltd.	Toshima-ku, Tokyo	¥1,260	Type II financial instruments business operation and investment trust management business, others	June 12, 2006	40.0% (40.0%)
	ATM Japan Business Service, Ltd.	Minato-ku, Tokyo	¥100	ATM cash loading and collection, ATM management	August 30, 2012	35.0% (35.0%)
	JA Foods Oita Co., Ltd.	Kitsuki-shi, Oita	¥493	Processing and sales of agricultural products, fruits and vegetables	December 2, 1991	20.0% (20.0%)
	RINGBELL Co., Ltd.	Chuo-ku, Tokyo	¥354	Planning, production and sales of gift catalogs, others	July 3, 1987	20.0% (20.0%)

Note: The figures in parentheses in the column showing percentage ownership of voting rights indicate the percentage of indirect ownership through consolidated subsidiaries.

7

Teishin Hospitals

(As of April 1, 2015)

Name of facility	Location	Telephone number
Sapporo Teishin Hospital	1-5-1, Kawazoe 14-jo, Minami-ku, Sapporo, Hokkaido 005-8798	011-571-5103
Yokohama Teishin Hospital	13-10, Nishi Kanagawa 1-chome, Kanagawa-ku, Yokohama, Kanagawa 221-8798	045-321-4782
Tokyo Teishin Hospital	14-23, Fujimi 2-chome, Chiyoda-ku, Tokyo 102-8798	03-5214-7111
Toyama Teishin Hospital	2-29, Kashima-machi 2-chome, Toyama, Toyama 930-8798	076-423-7727
Nagoya Teishin Hospital	2-5, Izumi 2-chome, Higashi-ku, Nagoya, Aichi 461-8798	052-932-7151
Kyoto Teishin Hospital	109, Nishi Rokkakucho, Shinmachi Nishiiru, Rokkakutori, Nakagyo-ku, Kyoto, Kyoto 604-8798	075-241-7167
Osaka Kita Teishin Hospital	1-6, Nakazaki 1-chome, Kita-ku, Osaka, Osaka 530-8798	06-6361-2071
Hiroshima Teishin Hospital	19-16, Higashi Hakushima-cho, Naka-ku, Hiroshima, Hiroshima 730-8798	082-224-5355
Tokushima Teishin Hospital	19-2, Iga-cho 3-chome, Tokushima, Tokushima 770-8798	088-623-8611
Fukuoka Teishin Hospital	6-11, Yakuin 2-chome, Chuo-ku, Fukuoka, Fukuoka 810-8798	092-741-0300
Kagoshima Teishin Hospital	12-1, Shimo Ishiki 1-chome, Kagoshima, Kagoshima 890-8798	099-223-6013

(As of July 1, 2015)

1. Kanpo no Yado Inns

Number	Name of facility	Location	Telephone number	Number of rooms	Notes
1	Otaru	2-670, Asarigawa Onsen, Otaru, Hokkaido 047-0154	0134-54-8511	21	Kazeru Otaru Annex
2	Ichinoseki	147-5, Horyu, Genbi-cho, Ichinoseki, Iwate 021-0101	0191-29-2131	55	
3	Matsushima	89-53, Minami-Akasaki, Nobiru, Higashi-Matsushima, Miyagi 981-0411	—	—	Temporarily closed
4	Sakata	17-26, Iimoriyama 3-chome, Sakata, Yamagata 998-8588	0234-31-4126	39	
5	Koriyama	3-198, Atami, Atami-machi, Koriyama, Fukushima 963-1380	024-984-3511	36	
6	Iwaki	60, Shibazaki, Tairafujima, Iwaki, Fukushima 970-0103	0246-39-2670	59	
7	Oarai	7986-2, Isohama-cho, Oarai-machi, Higashi-Ibaraki-gun, Ibaraki 311-1301	029-267-3191	52	
8	Itako	1830-1, Mizuhara, Itako, Ibaraki 311-2404	0299-67-5611	56	
9	Shiobara	1256, Shiobara, Nasushiobara, Tochigi 329-2921	0287-32-2845	39	
10	Tochigi Kitsuregawa Onsen	5296-1, Kitsuregawa, Sakura, Tochigi 329-1412	028-686-2822	53	
11	Isobe	22, Gobara, Annaka, Gunma 379-0135	027-385-6321	51	
12	Yorii	2267, Sueno, Yorii-machi, Osato-gun, Saitama 369-1205	048-581-1165	51	
13	Kamogawa	1137, Nishi-cho, Kamogawa, Chiba 296-0043	04-7092-1231	101	
14	Asahi	2280-1, Nittama, Asahi, Chiba 289-2525	0479-63-2161	61	
15	Katsuura	2183-5, Ubara, Katsuura, Chiba 299-5243	0470-76-3011	50	
16	Ome	668-2, Komaki-cho 3-chome, Ome, Tokyo 198-0053	0428-23-1171	56	
17	Hakone	159, Motohakone, Hakone-machi, Ashigarashimo-gun, Kanagawa 250-0522	0460-84-9126	29	
18	Isawa	348-1, Matsumoto, Isawa-cho, Fuefuki, Yamanashi 406-0021	055-262-3755	54	
19	Kashiwazaki	2-15, Kotobuki-cho, Kashiwazaki, Niigata 945-0846	—	—	Temporarily closed
20	Suwa	15-16, Owa 2-chome, Suwa, Nagano 392-0001	0266-52-1551	36	
21	Atami (Main Building)	12-3, Minaguchi-cho 2-chome, Atami, Shizuoka 413-0016	0557-83-6111	159	
	Atami (Annex)	13-77, Minaguchi-cho 2-chome, Atami, Shizuoka 413-0016	0557-83-6111	45	
22	Izukogen	1104-5, Yawatano, Ito, Shizuoka 413-0232	0557-51-4400	59	
23	Toyama	5691-2, Hane, Fuchu-machi, Toyama, Toyama 939-2694	076-469-3135	40	
24	Fukui	43-17, Fuchi-machi, Fukui, Fukui 918-8026	0776-36-5793	33	
25	Yaizu	1375-2, Hamatome, Yaizu, Shizuoka 425-8533	054-627-0661	40	
26	Hamanako-Mikkabi	2977-2, Tsuzuki, Mikkabi-cho, Kita-ku, Hamamatsu, Shizuoka 431-1496	053-526-1201	41	
27	Sangane	1-221, Nyukaizan, Higashihazu-cho, Nishio, Aichi 444-0701	0563-62-2650	32	Closed as of check-out on August 31, 2015
28	Chita-Mihama	39, Suhara, Okuda, Mihama-cho, Chita-gun, Aichi 470-3233	0569-87-1511	42	
29	Ena	2709, Oi-cho, Ena, Gifu 509-7201	0573-26-4600	54	
30	Gifu-Hashima	1041, Uaminami, Kuwabara-cho, Hashima, Gifu 501-6323	058-398-2631	40	
31	Toba	1200-7, Arashima-cho, Toba, Mie 517-0021	0599-25-4101	58	
32	Kumano	1020-7, Ido-cho, Kumano, Mie 519-4324	0597-89-4411	27	Closed as of check-out on August 31, 2015
33	Hikone	3759, Matsubara-cho, Hikone, Shiga 522-0002	0749-22-8090	41	
34	Maizuru	224-5, Ueyasu, Maizuru, Kyoto 624-0912	—	—	Temporarily closed
35	Tondabayashi	880-1, Ryusen, Tondabayashi, Osaka 584-0053	0721-33-0700	43	

Number	Name of facility	Location	Telephone number	Number of rooms	Notes
36	Yamatoheguri	16-1, Kamisho 2-chome, Heguri-cho, Ikoma-gun, Nara 636-0905	0745-45-0351	34	
37	Nara	9-1, Nijo-cho 3-chome, Nara, Nara 630-8002	0742-33-2351	40	
38	Shirahama	1688-2, Shirahama-cho, Nishimuro-gun, Wakayama 649-2211	0739-42-2980	31	Closed as of check-out on August 31, 2015
39	Kii-Tanabe	24-1, Mera, Tanabe, Wakayama 646-8501	0739-24-2900	52	
40	Arima	1617-1, Arima-cho, Kita-ku, Kobe, Hyogo 651-1401	078-904-0951	53	
41	Ako	883-1, Misaki, Ako, Hyogo 678-0215	0791-43-7501	50	
42	Awajishima	824, Toshima, Awaji, Hyogo 656-1711	0799-82-1073	40	
43	Kaike	1-7, Kaikeshinden 3-chome, Yonago, Tottori 683-0002	0859-33-4421	35	Closed as of check-out on August 31, 2015
44	Mimasaka Yunogo	674-7, Nakayama, Mimasaka, Okayama 707-0061	0868-72-5551	35	Closed as of check-out on August 31, 2015
45	Takehara	442-2, Nishino-cho, Takehara, Hiroshima 725-0002	0846-29-0141	40	
46	Hikari	31-1, Murozumi-Higashinosh, Hikari, Yamaguchi 743-0005	0833-78-1515	40	
47	Yuda	1-42, Kanda-cho, Yamaguchi, Yamaguchi 753-0064	083-922-5226	40	
48	Kanonji	1101-4, Ikenoshiri-cho, Kanonji, Kagawa 768-0031	0875-27-6161	55	
49	Sakaide	2048-91, Takaya-cho, Sakaide, Kagawa 762-0017	0877-47-0531	41	Closed as of check-out on August 31, 2015
50	Tokushima	3-70, Nakatsuyama, Hachiman-cho, Tokushima, Tokushima 770-8071	088-625-1255	46	
51	Dogo	3-1, Mizonobe-machi, Matsuyama, Ehime 791-0101	089-977-0460	54	Closed as of check-out on August 31, 2015
52	Ino	1569, Hakawa, Ino-cho, Agawa-gun, Kochi 781-2128	088-892-1580	52	
53	Kitakyushu	2829, Arige, Wakamatsu-ku, Kitakyushu, Fukuoka 808-0123	093-741-1335	50	
54	Yanagawa	10-1, Yashiro-machi, Yanagawa, Fukuoka 832-0057	0944-72-6295	40	
55	Shimabara	8362-3, Hakusan-machi, Shimabara, Nagasaki 855-0824	—	—	Temporarily closed
56	Beppu	457, Tsurumi, Beppu, Oita 874-0844	0977-66-1271	49	
57	Hita	685-6, Nakanoshima-machi, Hita, Oita 877-0074	0973-24-0811	53	
58	Yamaga	2450, Shijiki, Yamaga, Kumamoto 861-0542	0968-43-5121	28	Closed as of check-out on August 31, 2015
59	Aso	5936, Miyaji, Ichinomiya-machi, Aso, Kumamoto 869-2612	0967-22-1122	66	
60	Nichinan	2228-1, Hoshikura, Nichinan, Miyazaki 889-2533	0987-22-5171	46	
61	Recreation Center in Naha	9-15, Minato-machi 2-chome, Naha, Okinawa 900-0001	098-862-4740	70	Closed as of check-out on August 31, 2015

2. Kanpo no Sato Inns

Number	Name of facility	Location	Telephone number	Number of rooms	Notes
62	Shobara	281-1, Shinjo-cho, Shobara, Hiroshima 727-0004	0824-73-1800	62	

3. Rafre Saitama and Other Facilities

Number	Name of facility	Location	Telephone number	Number of rooms	Notes
63	Rafre Saitama	3-2, Shintoshin, Chuo-ku, Saitama, Saitama 330-0081	048-601-1111	186	
64	U-Port Recreation Center in Setagaya	17-1, Kamata 2-chome, Setagaya, Tokyo 157-0077	03-3709-0161	—	No accommodation facilities

Notes 1: For more details, contact the hotels directly or call the customer service center of *Kanpo no Yado* inns at 0120-715294 (weekdays: 9:30 to 17:30).

2: Each accommodation facility has formed a disaster agreement beforehand with local municipalities to provide evacuation areas, bathing facilities and food in accordance with requests from these municipalities (except Koriyama).

Year	Major Event
1871	Modern postal service established (new postal system set up between Tokyo and Kyoto and Tokyo and Osaka)
1872	Registered mail service launched Nationwide postal network completed
1873	Nationwide flat-rate system introduced Issuance of postcards begun
1875	Government mail offices and mail handling offices renamed post offices Postal money order service established International mail service launched Postal savings service established
1877	Joined the Universal Postal Union
1880	Foreign postal money order service launched
1885	Issuance of reply-paid postcards begun Ministry of Communications established
1887	The 〒 mark adopted as the logo for the Ministry of Communications
1892	Parcel post service begun
1894	First commemorative stamps (two types; celebrating the 25th royal wedding anniversary of the Meiji Emperor) issued
1899	Special New Year's postcards delivery service launched (suspended in 1923, when the Great Kanto Earthquake occurred, and in the pre- and post-war periods from 1940 to 1947)
1901	Red post boxes introduced
1906	Money Transfer service established
1910	Governmental pensions payment receiving service launched
1911	Express mail service launched
1916	Postal life insurance service established
1926	Postal life annuity service established
1928	<i>Kokumin Hoken Taiso</i> (radio exercise) program launched
1931	Foreign Money Transfer service launched
1941	<i>TEIGAKU</i> deposits introduced
1944	System allowing payment of postage in arrears introduced
1949	The Ministry of Posts and Telecommunications established Law Concerning Contracted Post Offices went into effect Issuance of New Year's lottery postcards begun
1950	Issuance of summer greeting postcards begun
1951	New radio exercise program launched
1961	Postal orders (<i>TEIGAKU KOGAWASE</i>) service introduced
1968	Three- or five-digit postal code system introduced
1973	Depositor loan service introduced

Year	Major Event
1975	Express mail service (EMS) launched
1977	Online postal life insurance service launched
1978	Online postal savings service launched
1980	Cash dispensers (CDs) for postal savings introduced
1981	Automatic teller machines (ATMs) for postal savings introduced Trial service for electronic postal mail launched
1983	<i>Furusato</i> parcel service launched
1986	Automatic insurance premiums transfer service launched
1988	Sales of Japanese Government Bonds etc. begun
1989	Issuance of regional stamps (later renamed <i>Furusato</i> stamps) and New Year's lottery stamps begun The passbook with remittance service launched
1991	Issuance of <i>Furusato</i> picture postcards and donation-added New Year's lottery stamps begun Foreign exchange service launched
1998	Seven-digit postal code system introduced
1999	ATM/CD alliance service with private-sector financial institutions launched <i>Minna no Taiso</i> ("Exercise for Everyone") program developed Sales of lotteries begun
2000	Mutual remittance services between post offices and private-sector financial institutions begun
2001	Postal Services Agency established
2002	Defined contribution pensions (individual annuities) service begun
2003	Japan Post established
2005	Sales of investment trusts begun
2007	Japan Post Group established Agent sales of automobile insurance begun
2008	Issuance of JP BANK CARD begun Intermediary service for individual loans launched Agent sales of Variable Annuities Policies begun A new hospitalization rider, <i>Sono hi kara</i> , launched Agent sales of third-sector insurance begun Sales of life insurance for corporate clients (for management-level personnel) begun
2009	Online connection to the Zengin Data Telecommunication System (Zengin System) established
2010	Letter Pack service launched
2012	The "Act for Partial Revision of the Postal Service Privatization Act and others" went into effect, Japan Post Service and Japan Post Network merged, and Japan Post Co., Ltd. established Japan Post Group Vision 2021 announced
2013	Grand opening of JP Tower
2014	"Japan Post Group Medium-Term Management Plan—New Japan Post Group Network Creation Plan 2016" announced Japan Post Group Women's Athletics Team established Sales of <i>Hajime no Kanpo</i> Educational Endowment Insurance begun

2. Outline of Japan Post Co., Ltd.

1 Company Outline

Company name (in Japanese):	Nippon Yubin Kabushiki Kaisha
Company name:	JAPAN POST Co., Ltd.
Head office location:	3-2, Kasumigaseki 1-chome, Chiyoda-ku, Tokyo 100-8798, Japan
Telephone:	03-3504-4411 (Japan Post Group main number)
Paid-in capital:	¥400 billion
Date of establishment:	October 1, 2007
Legal basis:	Established under the Japan Post Co., Ltd. Act (Law No. 100 of October 21, 2005)
Lines of business:	Postal operations; banking counter operations; insurance counter operations; sales of documentary stamps; operations consigned by local government entities; bank and life and non-life insurance agency services other than those mentioned previously; domestic distribution and delivery business and international cargo transport and agency services for air cargo business; logistics business; real estate business; and merchandise sales

2 Management Philosophy

Management Philosophy

"Japan Post Co., Ltd. will fully utilize its resources that include its post office and delivery networks covering every corner of the country to provide safe, reliable and fast services tailored to the needs of each community while contributing to the realization of a society with an abundance of human contact by supporting people's lifestyles throughout their entire lives."

- We will provide the basic postal services of postal, banking and insurance services extensively across the country into the future.
- We will take on the challenge of providing innovative services that respond accurately to changes in society and enrich people's lives.
- We will fulfill our responsibilities as a corporate citizen by establishing corporate governance systems and strictly implementing compliance.
- Each and every employee will continue to grow to ensure we are appreciated by our customers and trusted and respected by local communities.

3 Information on Shares

(as of March 31, 2015)

1. Number of Shares

Total shares issued	10,000,000
---------------------	------------

2. Shareholder

Japan Post Holdings Co., Ltd.	Condition of holdings	
	Shares owned	Percentage of total issued
	10,000,000	100%

4 Number of Employees

193,934* (as of March 31, 2015)

* The number of employees excludes employees assigned to other companies by Japan Post Co., Ltd. but includes employees assigned to Japan Post Co., Ltd. by other companies. The figures do not include part-time employees.

5

List of Directors, Auditors and Executive Officers

(As of July 1, 2015)

1. Directors

President & CEO (Representative Executive Officer).....	Toru Takahashi (Concurrently holds the position of Director of Japan Post Holdings Co., Ltd.)
Senior Executive Vice President (Representative Director).....	Tomohiro Yonezawa
Executive Vice President (Representative Director).....	Seiki Fukuda
Director	Yasuo Suzuki (Concurrently holds the position of Representative Director and Senior Executive Vice President of Japan Post Holdings Co., Ltd.)
Director	Taizo Nishimuro (Concurrently holds the position of Representative Executive Officer and President & CEO of Japan Post Holdings Co., Ltd.)
Director (Outside)	Kenji Kitahara (Former member of the NHK Management Committee)
Director (Outside)	Risa Tanaka (Concurrently holds the position of Executive Vice President and Executive Editor of Sendenkaigi Co., Ltd.)
Director (Outside)	Yoshinori Suzuki (Concurrently holds the position of Special Adviser of Japan Securities Depository Center, Incorporated)
Director (Outside)	Toyohiko Takabe (Concurrently holds the position of Adviser of Nippon Telegraph and Telephone East Corporation)
Director (Outside)	Michiko Hirono (Concurrently holds the position of President & Representative Director of 21 Lady Co., Ltd.)

2. Audit and Supervisory Board Member

Hisamitsu Gannyo
Toshiyuki Takano
Hiroshi Shidehara
Yoshio Haibara

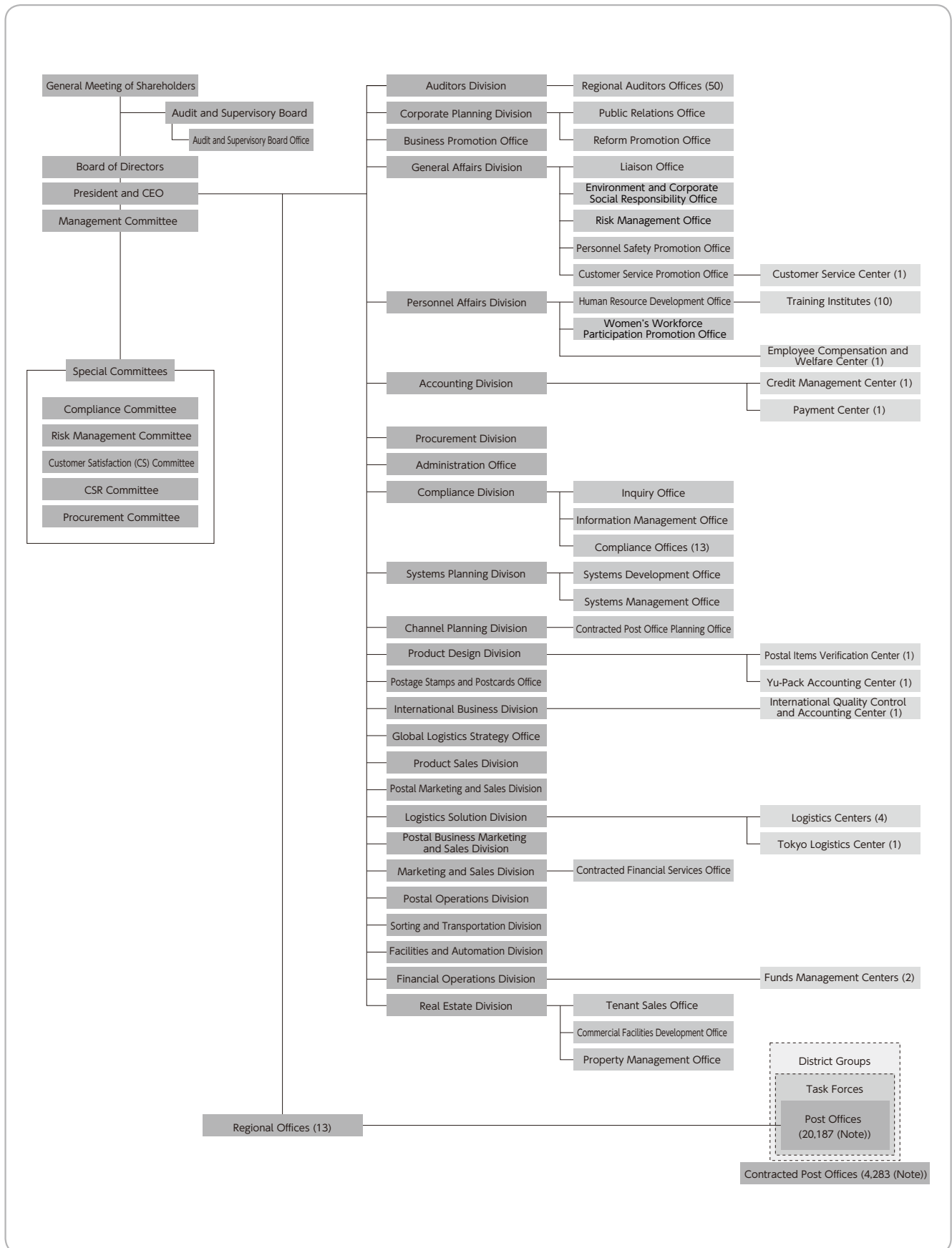
3. Executive Officers

Vice President	Chikashi Isayama	Executive Officer	Kazuaki Daikaku
First Executive Officer	Kenji Sasaki	Executive Officer	Keiichi Yano
First Executive Officer (Concurrently holds the position of Managing Executive Officer of Japan Post Holdings Co., Ltd.)	Toru Inasawa	Executive Officer (Concurrently holds the position of Executive Officer of Japan Post Holdings Co., Ltd.)	Susumu Inoue
Senior Executive Officer	Manabu Kawamura	Executive Officer	Hiroaki Kawamoto
Senior Executive Officer	Naoki Nakashima	Executive Officer	Hitoshi Arawaka
Senior Executive Officer	Shuzo Inoue	Executive Officer	Toshiyuki Yazaki
Senior Executive Officer	Tsunehiko Matsuyama	Executive Officer	Nobuo Tsuruda
Senior Executive Officer	Ryutaro Yamamoto	Executive Officer	Kazuya Hino
Senior Executive Officer	Keiichi Shirato	Executive Officer	Masahiko Metoki
Senior Executive Officer	Yoshiyuki Higuchi	Executive Officer	Masayuki Tokushige
Senior Executive Officer (Concurrently holds the position of Managing Executive Officer of Japan Post Holdings Co., Ltd.)	Satoru Tatebayashi	Executive Officer	Katsuhiko Tsuyama
Senior Executive Officer	Norio Wakasa	Executive Officer	Atsushi Fuchie
		Executive Officer	Satoshi Higashikozono
		Executive Officer	Ichiro Mio
		Executive Officer	Kimikazu Sano
		Executive Officer	Kanako Asami
		Executive Officer	Katsuhiko Sato

6

Organization Chart

(As of July 1, 2015)



Note: The number of directly managed post offices and contracted post offices is as of March 31, 2015.

7

Names and Locations of Regional Offices

(As of July 1, 2015)

Name of regional office	Location
Hokkaido	4-3, Kita Nijo Nishi, Chuo-ku, Sapporo, Hokkaido 060-8797
Tohoku	1-34, Ichiban-cho 1-chome, Aoba-ku, Sendai, Miyagi 980-8797
Kanto	3-1, Shintoshin, Chuo-ku, Saitama, Saitama 330-9797
Tokyo	6-19, Azabudai 1-chome, Minato-ku, Tokyo 106-8797
Minami Kanto	1-2, Enoki-cho, Kawasaki-ku, Kawasaki, Kanagawa 210-8797
Shinetsu	801, Kurita, Nagano, Nagano 380-8797
Hokuriku	1-15, Kamitsutsumi-cho, Kanazawa, Ishikawa 920-8797
Tokai	2-5, Marunouchi 3-chome, Naka-ku, Nagoya, Aichi 469-8797
Kinki	3-9, Kitahama Higashi, Chuo-ku, Osaka, Osaka 530-8797
Chugoku	19-8, Higashi Hakushima-cho, Naka-ku, Hiroshima, Hiroshima 730-8797
Shikoku	8-5, Miyata-cho, Matsuyama, Ehime 790-8797
Kyushu	1-1, Joto-machi, Chuo-ku, Kumamoto, Kumamoto 860-8797
Okinawa	26-29, Higashi-machi, Naha, Okinawa 900-8797

8

Post Offices by Prefecture

(As of March 31, 2015)

Prefecture	Post offices in service				Post offices out of service				Grand total
	Directly managed post offices		Contracted post offices	Total	Directly managed post offices		Contracted post offices	Total	
	Regular post offices	Post office branches			Regular post offices	Post office branches			
Hokkaido	1,208	1	282	1,491	0	0	13	13	1,504
Aomori	267	0	93	360	0	0	2	2	362
Iwate	299	1	120	420	8	0	5	13	433
Miyagi	345	0	85	430	17	0	8	25	455
Akita	273	0	127	400	0	0	1	1	401
Yamagata	289	0	108	397	0	0	1	1	398
Fukushima	410	0	110	520	21	0	6	27	547
Ibaraki	465	0	53	518	0	0	3	3	521
Tochigi	312	0	42	354	0	0	5	5	359
Gunma	301	0	39	340	0	0	0	0	340
Saitama	626	0	19	645	0	0	0	0	645
Chiba	689	0	33	722	1	0	1	2	724
Kanagawa	751	0	13	764	0	0	1	1	765
Yamanashi	202	0	63	265	0	0	2	2	267
Tokyo	1,478	0	6	1,484	21	0	0	21	1,505
Niigata	534	0	138	672	0	0	10	10	682
Nagano	444	0	196	640	0	0	18	18	658
Toyama	212	0	75	287	0	0	4	4	291
Ishikawa	254	0	70	324	0	0	4	4	328
Fukui	210	0	32	242	0	0	1	1	243
Gifu	355	0	91	446	0	0	10	10	456
Shizuoka	484	0	101	585	0	0	12	12	597
Aichi	837	3	78	918	0	0	14	14	932
Mie	372	0	85	457	0	0	9	9	466
Shiga	230	0	31	261	0	0	1	1	262
Kyoto	441	0	32	473	1	0	2	3	476
Osaka	1,085	4	29	1,118	0	0	1	1	1,119
Hyogo	839	2	118	959	0	0	6	6	965
Nara	241	0	78	319	0	0	4	4	323
Wakayama	263	0	54	317	0	0	0	0	317
Tottori	147	0	97	244	0	0	3	3	247
Shimane	257	0	114	371	0	0	8	8	379
Okayama	417	2	104	523	0	0	9	9	532
Hiroshima	582	0	114	696	0	0	6	6	702

Prefecture	Post offices in service				Post offices out of service				Grand total
	Directly managed post offices		Contracted post offices	Total	Directly managed post offices		Contracted post offices	Total	
	Regular post offices	Post office branches			Regular post offices	Post office branches			
Yamaguchi	353	0	58	411	0	0	6	6	417
Tokushima	201	0	31	232	0	0	6	6	238
Kagawa	188	0	28	216	0	0	9	9	225
Ehime	317	0	76	393	0	0	7	7	400
Kochi	229	0	90	319	0	0	4	4	323
Fukuoka	715	0	95	810	0	0	1	1	811
Saga	166	0	40	206	0	0	1	1	207
Nagasaki	309	0	137	446	0	0	2	2	448
Kumamoto	389	0	175	564	1	0	2	3	567
Oita	305	0	95	400	0	0	2	2	402
Miyazaki	195	0	111	306	0	0	3	3	309
Kagoshima	436	2	277	715	0	0	5	5	720
Okinawa	180	0	22	202	0	0	0	0	202
Nationwide total	20,102	15	4,065	24,182	70	0	218	288	24,470

Note: Contracted post offices operate under consignment contracts.

"Post offices out of service" are post offices for which customers have been informed of a temporary closure and postal counter operations have been ceased.

Other emergency services are as follows.

Number of instances where services are provided by personnel dispatched to the location	Number of instances where services are provided by 2 mobile post offices
8	3

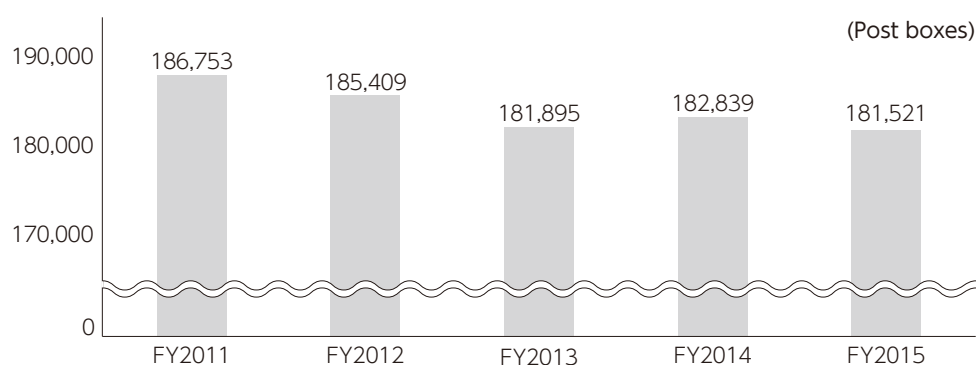
One of the mobile post offices has been dispatched to the disaster-affected regions and therefore its service has been temporality suspended at the moment.

Post offices out of service are as follows.

	Closed due to the Great East Japan Earthquake	Closed for reasons other than the Great East Japan Earthquake	Total
Directly managed post offices	46	24	70
Contracted post offices	14	204	218

(As of March 31, 2015)

Affiliation	Company name	Location	Paid-in capital (millions)	Line of business	Date of establishment	Japan Post ownership	Ownership of voting shares
Consolidated Subsidiaries	Japan Post Office Support Co., Ltd.	Minato-ku, Tokyo	¥180	Merchandise sales Facilities management	March 16, 1971	84.9%	84.9%
	Japan Post Sankyu Global Logistics Co., Ltd.	Chuo-ku, Tokyo	¥300	International air freight forwarding	July 1, 2008	60.0%	60.0%
	Japan Post International Logistics Co., Ltd.	Shanghai, China	CNY50	International logistics	September 6, 2013	100.0%	100.0%
	Japan Post Trading Service Co., Ltd.	Koto-ku, Tokyo	¥100	Merchandise business, contracting business for merchandise operations	September 11, 2007	100.0%	100.0%
	Japan Post Communications Co., Ltd.	Minato-ku, Tokyo	¥350	Operations related to posting advertisements in post offices	August 8, 2014	100.0%	100.0%
	JP Logi Service Co., Ltd.	Osaka-shi, Osaka	¥34	Preparation and posting of postal items, parcels and mail items	October 15, 1968	67.6%	67.6%
	JP Media Direct Co., Ltd.	Minato-ku, Tokyo	¥300	Planning, development and sales of direct media and contracted shipment of merchandise	February 29, 2008	51.0%	51.0%
	Japan Post Finance Co., Ltd.	Shinjuku-ku, Tokyo	¥400	Settlement service business	April 1, 2014	85.1%	85.1%
	JP Biz Mail Co., Ltd.	Adachi-ku, Tokyo	¥100	Preparation and posting of postal items	February 1, 2006	51.0%	58.5%
	Japan Post Delivery Co., Ltd.	Chuo-ku, Tokyo	¥400	Collection and delivery of Yu-Pack and other items	April 1, 2014	100.0%	100.0%
	Japan Post Transport Co., Ltd.	Minato-ku, Tokyo	¥18,250	Truck cargo transportation	November 30, 2007	100.0%	100.0%
	Japan Post Building Management Co., Ltd.	Chiyoda-ku, Tokyo	¥150	Property management for commercial buildings	April 1, 2011	100.0%	100.0%



Japan Post outsources some of its business activities as prescribed by law.

■ Outsourcing of Transport of Postal Materials or others

The following table shows the status for the outsourcing of the collection, transport and delivery operations to transport companies and other parties as prescribed in the Law for Outsourcing Postal Material Transport (1949 Law No. 284).

(Millions of yen)

Category	FY2013	FY2014	FY2015
Collection, delivery and transport outsourcing expenses	172,044	173,568	187,701

■ Outsourcing of Sale of Postage Stamps or others

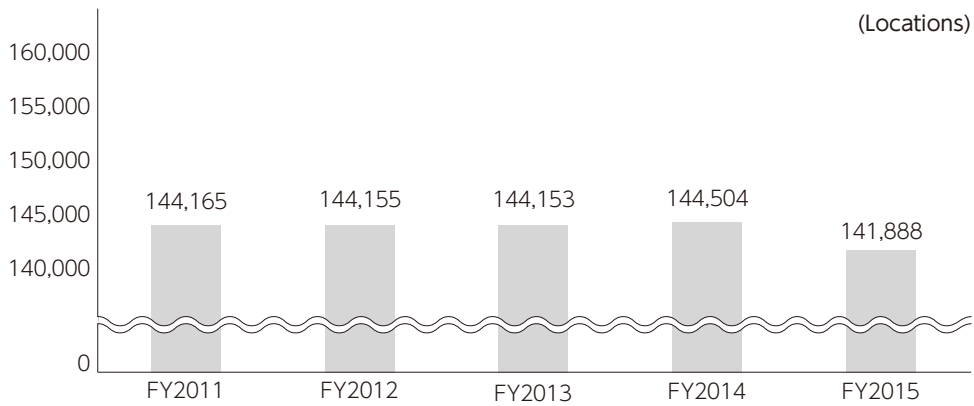
The following table shows the status of outsourcing of the sale of postage stamps, etc., as prescribed in the Law Concerning Locations for the Sale of Postage Stamps (1949 Law No. 91).

(Millions of yen)

Category	FY2013	FY2014	FY2015
Fees paid to locations selling postage stamps	18,960	18,713	17,443

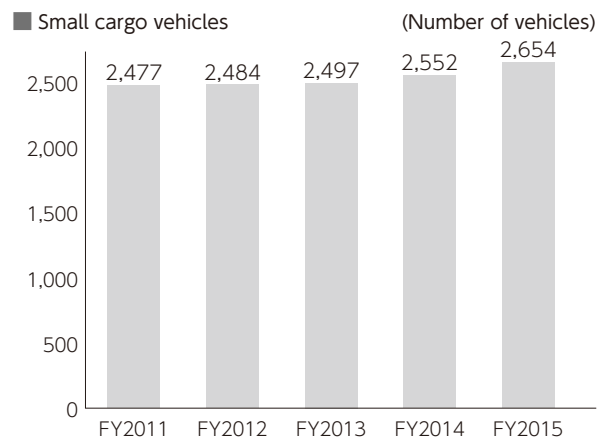
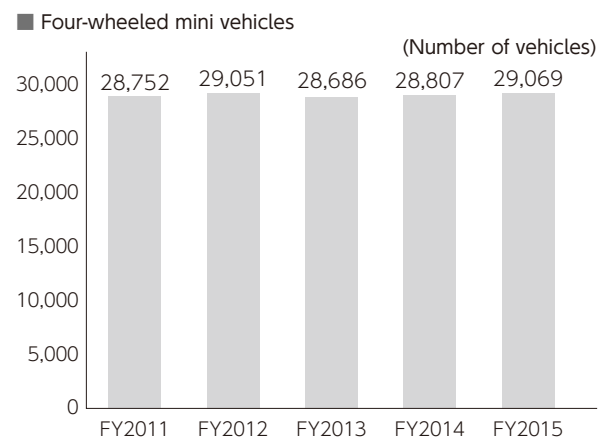
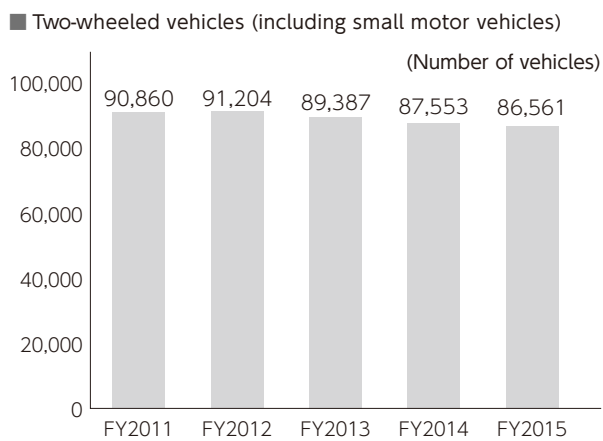
12

Number of Locations Selling Postage Stamps and Documentary Stamps



13

Number of Postal Service Vehicles Owned



3. Outline of Japan Post Bank Co., Ltd.

1 Company Outline

Company name (in Japanese):	Kabushiki Kaisha Yucho Ginko
Company name:	JAPAN POST BANK Co., Ltd.
Head office location:	3-2, Kasumigaseki 1-chome, Chiyoda-ku, Tokyo 100-8798, Japan
Telephone:	03-3504-4411 (Japan Post Group main number)
Paid-in capital:	¥3,500 billion
Date of establishment:	September 1, 2006 (On October 1, 2007, the name was changed from Yucho Co., Ltd. to Japan Post Bank Co., Ltd.)
Line of business:	Banking
Financial institution code number:	9900

2 Management Philosophy

Management Philosophy

Japan Post Bank is dedicated to serving as "the most accessible and trustworthy bank in Japan," with operations that are guided by the needs and wishes of our customers.

Trustworthy:	We will comply with laws regulations and other standards of behavior in order to earn the trust of markets, shareholders and employees and consistently serve as a responsible corporate citizen.
Innovation:	We will constantly use innovative ideas to improve our management and business activities in response to input from customers and changes in market conditions.
Efficiency:	We will pursue improvements in speed and efficiency in order to be a source of products and services that match our customers' requirements.
Expertise:	We will work continually on upgrading expertise in specialized fields with the aim of meeting the high expectations of our customers.

3 Information on Shares

(as of March 31, 2015)

1. Number of Shares

Total shares issued	150,000,000
---------------------	-------------

2. Shareholder

Japan Post Holdings Co., Ltd.	Condition of holdings	
	Shares owned	Percentage of total issued
	124,982,500	100%

Note: Shareholding percentage is calculated by excluding the number of treasury stock (25,017,500 shares).

4 Number of Employees

12,889* (as of March 31, 2015)

* The number of employees excludes employees assigned to other companies by the Bank but includes employees assigned to the Bank by other companies. The figures do not include short-term contract and part-time employees.

(As of July 1, 2015)

1. Board of Directors

Representative Executive Officer (President & CEO).....	Masatsugu Nagato (Concurrently holds the position of Director of Japan Post Holdings Co., Ltd.)
Representative Executive Vice President.....	Susumu Tanaka (Concurrently holds the position of Managing Executive Officer of Japan Post Holdings Co., Ltd.)
Executive Vice President.....	Tomohisa Mase
Director	Taizo Nishimuro (Concurrently holds the position of Representative Executive Officer and President & CEO of Japan Post Holdings Co., Ltd.)
Outside Director	Tomoyoshi Arita (Attorney-at-Law)
Outside Director	Yoshifumi Iwasaki (Formerly held the position of President & CEO of Mitsui Fudosan Realty Co., Ltd.)
Outside Director	Yoshizumi Nezu (Concurrently holds the position of President & Representative Director of Tobu Railway Co., Ltd.)
Outside Director	Sawako Nohara (Concurrently holds the position of President & Representative Director of IPSe Marketing, Inc.)
Outside Director	Tetsu Machida (Economics Journalist)
Outside Director	Nobuko Akashi (Concurrently holds the position of Chairperson of Japan Manners & Protocol Association)
Outside Director	Toshihiro Tsuboi (Formerly held the position of Representative Director and Executive Vice President of Japan Post Co., Ltd.)

2. Executive Officers (Excludes persons with concurrent posts in the above 1. Board of Directors)

Executive Vice President	Katsunori Sago	Executive Officer	Yoko Makino
Senior Managing Executive Officer	Masahiro Murashima	Executive Officer	Kunihiko Amaha
Senior Managing Executive Officer	Hiroshi Yamada	Executive Officer	Yoichi Uno
Managing Executive Officer	Riki Mukai	Executive Officer	Harumi Yano
Managing Executive Officer	Hiroichi Shishimi	Executive Officer	Makoto Shinmura
Managing Executive Officer	Yasuyuki Hori	Executive Officer	Suzunori Hayashi
Managing Executive Officer	Masahiro Nishimori	Executive Officer	Satoru Ogata
Managing Executive Officer	Masaya Aida	Executive Officer	Minoru Kotouda
		Executive Officer	Fujie Kawasaki
		Executive Officer	Toshiharu Ono
		Executive Officer	Shigeyuki Sakurai
		Executive Officer	Masatoshi Ishii

3. Nomination Committee

Chairman	Taizo Nishimuro
Member	Yoshifumi Iwasaki
Member	Yoshizumi Nezu

4. Audit Committee

Chairman	Tomoyoshi Arita
Member	Sawako Nohara
Member	Tetsu Machida
Member	Toshihiro Tsuboi

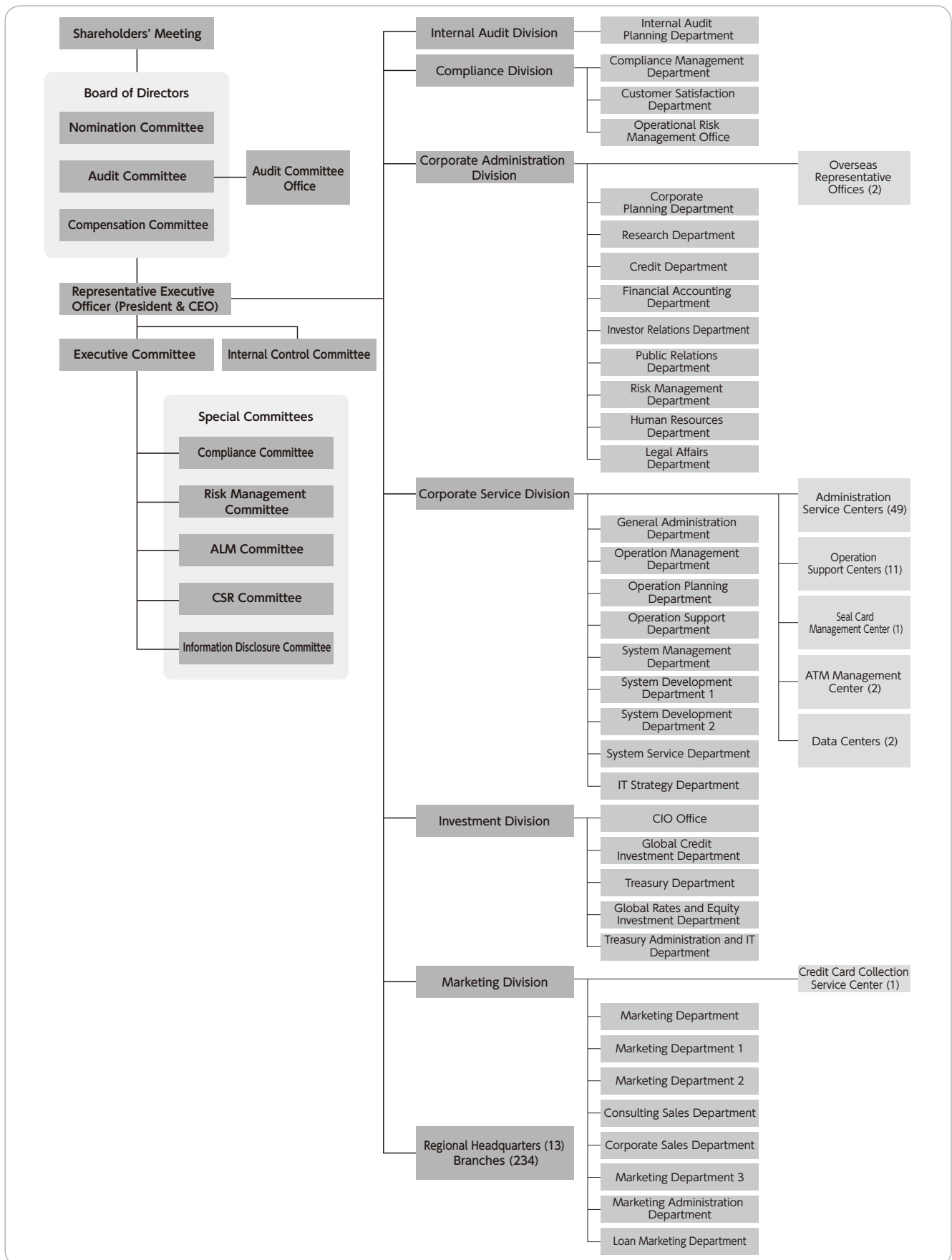
5. Compensation Committee

Chairman	Taizo Nishimuro
Member	Yoshifumi Iwasaki
Member	Yoshizumi Nezu

6

Organization Chart

(As of July 1, 2015)



Corporate Data

Financial Data

Others

7

Principal Business Locations

Head Office and 234 Branches

(As of March 31, 2015)

Name of branch	Location	Telephone number
Sapporo Branch	4-3, Kita Nijo Nishi, Chuo-ku, Sapporo, Hokkaido 060-0002	011-214-4300
Sendai Branch	1-3-3, Ichibancho, Aoba-ku, Sendai, Miyagi 980-8711	022-267-8275
Saitama Branch	7-1-12, Bessho, Minami-ku, Saitama, Saitama 336-8799	048-864-7317
Central Branch	2-7-2, Marunouchi, Chiyoda-ku, Tokyo 100-8996	03-3284-9618
Nagano Branch	1085-4, Minami Agata-machi, Nagano, Nagano 380-8799	026-226-2550
Kanazawa Branch	1-1, Sanja-machi, Kanazawa, Ishikawa 920-8799	076-224-3844
Nagoya Branch	3-1-10, Osu, Naka-ku, Nagoya, Aichi 460-8799	052-261-6728
Osaka Branch	3-2-4, Umeda, Kita-ku, Osaka, Osaka 530-0001	06-6347-8112
Hiroshima Branch	6-36, Moto-machi, Naka-ku, Hiroshima, Hiroshima 730-0011	082-222-1315
Matsuyama Branch	3-5-2, Sanban-cho, Matsuyama, Ehime 790-8799	089-941-0820
Kumamoto Branch	1-1, Joto-machi, Chuo-ku, Kumamoto, Kumamoto 860-0846	096-328-5163
Naha Branch	1-1-1, Kumoji, Naha, Okinawa 900-0015	098-867-8802

8

Japan Post Bank Offices by Prefecture

(As of March 31, 2015) (Branches/Post offices)

Prefecture	Head Office/Principal prefectural offices	Sub-branches	Japan Post Bank agents		Total
			Post offices	Contracted post offices	
Hokkaido	1	4	1,188	281	1,474
Aomori	0	2	265	93	360
Iwate	0	1	306	121	428
Miyagi	1	1	359	85	446
Akita	0	1	273	127	401
Yamagata	0	1	288	108	397
Fukushima	0	3	429	115	547
Ibaraki	0	3	462	54	519
Tochigi	0	2	309	43	354
Gunma	0	3	298	39	340
Saitama	1	16	608	18	643
Chiba	0	13	676	33	722
Kanagawa	0	31	718	13	762
Yamanashi	0	1	200	62	263
Tokyo	1	40	1,450	6	1,497
Niigata	0	3	531	138	672
Nagano	1	2	440	194	637
Toyama	0	2	209	74	285
Ishikawa	1	0	251	70	322
Fukui	0	1	209	31	241
Gifu	0	2	353	85	440
Shizuoka	0	5	478	90	573
Aichi	1	13	823	75	912
Mie	0	2	370	83	455
Shiga	0	1	229	31	261
Kyoto	0	4	437	32	473
Osaka	1	23	1,059	29	1,112
Hyogo	0	12	827	118	957
Nara	0	2	239	78	319

Prefecture	Head Office/Principal prefectural offices	Sub-branches	Japan Post Bank agents		Total
			Post offices	Contracted post offices	
Wakayama	0	1	262	54	317
Tottori	0	1	146	96	243
Shimane	0	1	256	114	371
Okayama	0	2	415	104	521
Hiroshima	1	3	578	115	697
Yamaguchi	0	3	350	58	411
Tokushima	0	1	200	31	232
Kagawa	0	2	186	26	214
Ehime	1	1	314	75	391
Kochi	0	1	228	88	317
Fukuoka	0	4	709	94	807
Saga	0	1	165	38	204
Nagasaki	0	2	307	137	446
Kumamoto	1	1	387	175	564
Oita	0	2	303	95	400
Miyazaki	0	1	194	111	306
Kagoshima	0	1	437	277	715
Okinawa	1	0	177	21	199
Total	12	222	19,898	4,035	24,167

Note 1: The number of post offices refers to the number of sales offices and branches handling bank agency services (including sub-offices).

2: The number of contracted post offices refers to the number of sales offices or branches commissioned to handle bank agency services by Japan Post Co., Ltd. on behalf of Japan Post Bank Co., Ltd.

3: The number of mobile post offices in Tokushima and Kumamoto Prefectures is not included in the above totals.

9 Number of ATMs by Prefecture

Prefecture	Number of ATMs
Hokkaido	1,663
Aomori	318
Iwate	348
Miyagi	515
Akita	314
Yamagata	323
Fukushima	502
Ibaraki	582
Tochigi	369
Gunma	358
Saitama	982
Chiba	1,009
Kanagawa	1,241
Yamanashi	224
Tokyo	2,839
Niigata	646

Prefecture	Number of ATMs
Nagano	534
Toyama	253
Ishikawa	321
Fukui	243
Gifu	410
Shizuoka	585
Aichi	1,149
Mie	426
Shiga	294
Kyoto	593
Osaka	1,649
Hyogo	1,152
Nara	298
Wakayama	298
Tottori	166
Shimane	289

(As of March 31, 2015)

Prefecture	Number of ATMs
Okayama	517
Hiroshima	787
Yamaguchi	434
Tokushima	232
Kagawa	239
Ehime	403
Kochi	274
Fukuoka	1,020
Saga	214
Nagasaki	378
Kumamoto	470
Oita	352
Miyazaki	238
Kagoshima	503
Okinawa	261
Total	27,215

10 Outline of Affiliated Companies

(As of March 31, 2015)

Company name	Location	Paid-in capital (Millions of yen)	Line of business	Date of establishment	Japan Post Bank ownership	Ownership of voting shares
SDP Center Co., Ltd.	Chuo-ku, Tokyo	2,000	Bank agency operations	May 28, 1980	45.0%	45.0%
ATM Japan Business Service, Ltd.	Minato-ku, Tokyo	100	ATM cash loading and collection as well as ATM management	August 30, 2012	35.0%	35.0%

4. Outline of Japan Post Insurance Co., Ltd.

1 Company Outline

Company name (in Japanese) :	Kabushiki Kaisha Kanpo Seimei Hoken
Company name:	JAPAN POST INSURANCE Co., Ltd.
Head office location:	3-2, Kasumigaseki 1-chome, Chiyoda-ku, Tokyo 100-8798, Japan
Telephone:	03-3504-4411 (Japan Post Group main number)
Paid-in capital:	¥500 billion
Date of establishment:	September 1, 2006 (The name of the company was changed from Kanpo Co., Ltd. to Japan Post Insurance Co., Ltd., on October 1, 2007.)
Line of business:	Life insurance

2 Management Philosophy

Management Philosophy

Moving forward with our customers while serving as "Japan's most familiar and trusted insurance company"

1. Promises to our customers

- (1) We will place importance on each contact with customers.
- (2) We will offer products and services that are easy to understand and use.
- (3) We will provide accurate information so that customers can use our products and services with confidence.

2. Promises to our shareholders

- (1) We will meet commitments to shareholders and aim to continuously enhance corporate value.
- (2) We will realize sound management through proper risk management.
- (3) We will strive to keep shareholders and investors closely informed.

3. Promises to society

- (1) We will make compliance one of the most important elements of our business activities.
- (2) We will actively contribute to people's health.
- (3) We will operate in a manner that is friendly to people and the environment.

4. Promises to our business partners

- (1) We will build relationships that support mutual growth through close cooperation and meticulous support.
- (2) We will work in concert with our business partners in the provision of our products and services and in improving their quality.
- (3) As a member of the Japan Post Group we will aim to boost the Group's brand value.

5. Promises to our employees

- (1) We will create pleasant and rewarding workplaces for our employees.
- (2) We will respect each employee as an individual and will provide equal opportunities.
- (3) We will actively support efforts for employees to upgrade their skills.

3 Information on Shares

(as of March 31, 2015)

1. Number of Shares

Total shares issued	20,000,000
---------------------	------------

2. Shareholder

Japan Post Holdings Co., Ltd.	Condition of holdings	
	Shares owned	Percentage of total issued
	20,000,000	100%

4 Number of Employees

7,153* (as of March 31, 2015)

* The number of employees excludes employees assigned to other companies by Japan Post Insurance Co., Ltd. but includes employees assigned to Japan Post Insurance Co., Ltd. by other companies. The figures do not include short-term contract and part-time employees.

5 List of Directors, Executive Officers and Management Committees

1. Directors

(As of July 1, 2015)

President, CEO Representative Executive Officer	Masami Ishii (Concurrently holds the position of Director, Japan Post Holdings Co., Ltd.)
Deputy President Representative Executive Officer	Toshihisa Minakata
Deputy President Representative Executive Officer	Shoji Awakura
Director	Akira Anzai
Director	Taizo Nishimuro (Concurrently holds the position of Representative Executive Officer and President & CEO, Japan Post Holdings Co., Ltd.)
Director (Outside)	Masaharu Hino (Attorney-at-Law)
Director (Outside)	Fumiaki Furuya (Concurrently holds the position of Chairman, NIPPON SHUPPAN HANBAI INC.)
Director (Outside)	Kiyomi Saito (Concurrently holds the position of CEO, JBond Totan Securities Co., Ltd.)
Director (Outside)	Shin Yoshidome (Concurrently holds the position of Senior Adviser, Daiwa Institute of Research Business Innovation Ltd.)
Director (Outside)	Shinji Hattori (Concurrently holds the position of Chairman & Group CEO, Seiko Holdings Corporation)
Director (Outside)	Michiko Matsuda (Concurrently holds the position of Adviser, IHI Enviro Corporation)

2. Executive Officers (Excludes persons holding concurrent posts in addition to the above. 1. Directors)

Senior Managing Executive Officer	Kiyoshi Ido	Executive Officer	Tomoaki Nara
Senior Managing Executive Officer	Kazuhide Kinugawa	Executive Officer	Shinji Ando
Senior Managing Executive Officer	Masaaki Horigane	Executive Officer	Nobuyasu Kato
Senior Managing Executive Officer	Mitsuhiko Uehira	Executive Officer	Yasutaka Nishikawa
Managing Executive Officer	Kiyotaka Fujimoto	Executive Officer	Osamu Kubo
Managing Executive Officer	Yoshito Horie	Executive Officer	Yasuaki Hironaka
Managing Executive Officer (Concurrently holds the position of Managing Executive Officer, Japan Post Holdings Co., Ltd.)	Tetsuya Senda	Executive Officer	Hikomichi Udagawa
Managing Executive Officer	Yasuhiro Sadayuki	Executive Officer	Hiroshi Nagaso
Managing Executive Officer	Yoshihiko Ido	Executive Officer	Hisao Nishikawa
Managing Executive Officer	Yoshio Inoue	Executive Officer	Masato Kawagoe
		Executive Officer	Yasumi Suzukawa
		Executive Officer	Kieko Onoki
		Executive Officer	Toru Onishi

3. Nomination Committee

Chairman	Taizo Nishimuro
Member	Masaharu Hino
Member	Shinji Hattori

4. Audit Committee

Chairman	Masaharu Hino
Member	Akira Anzai
Member	Kiyomi Saito
Member	Shin Yoshidome

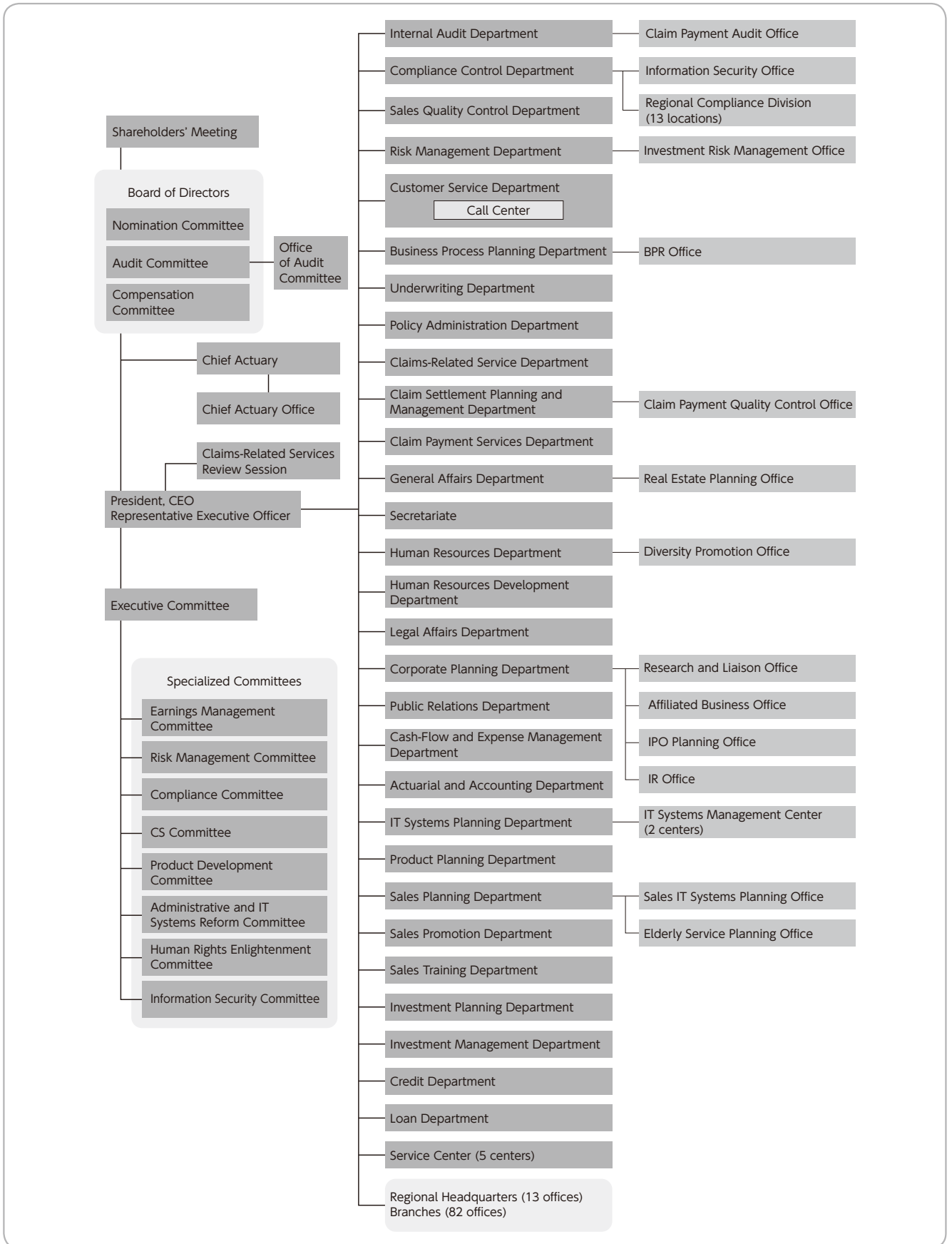
5. Compensation Committee

Chairman	Taizo Nishimuro
Member	Fumiaki Furuya
Member	Shinji Hattori

6

Organization Chart

(As of July 1, 2015)



7

Principal Branches

(As of July 1, 2015)

Name of branch	Location	Telephone number
Sapporo	4-1, Kita Nijo Nishi, Chuo-ku, Sapporo, Hokkaido 060-8534	011-221-6375
Sendai	1-1-34, Ichibancho, Aoba-ku, Sendai, Miyagi 980-8797	022-267-7851
Saitama	3-1, Shintoshin, Chuo-ku, Saitama, Saitama 330-9797	048-600-2073
Tokyo Central Corporate	3-17-1, Toranomom, Minato-ku, Tokyo 105-0001	03-6402-6515
Tokyo-Shintoshin Corporate	1-26-2, Nishishinjuku, Shinjuku-ku, Tokyo 163-0513	03-5990-5348
East Tokyo Corporate	1-10-14, Kitaueno, Taito-ku, Tokyo 110-0014	03-6802-8353
South Tokyo Corporate	6-7-29, Kitashinagawa, Shinagawa-ku, Tokyo 141-0001	03-5422-7654
Yokohama	5-3, Nihon Odori, Naka-ku, Yokohama, Kanagawa 231-8799	045-212-3967
Nagano	801, Kurita, Nagano, Nagano 380-8797	026-231-2348
Kanazawa	1-15, Kamitsutsumi-cho, Kanazawa, Ishikawa 920-8797	076-220-3178
Nagoya Corporate	3-20-27, Nishiki, Naka-ku, Nagoya, Aichi 460-0003	052-228-6742
Osaka Corporate	1-7-31, Otemae, Chuo-ku, Osaka, Osaka 540-6591	06-6948-8062
Hiroshima	19-8, Higashi Hakushima-cho, Naka-ku, Hiroshima, Hiroshima 730-8797	082-224-5165
Matsuyama	8-5, Miyata-machi, Matsuyama, Ehime 790-8797	089-936-5274
Kumamoto	1-1, Joto-machi, Chuo-ku, Kumamoto, Kumamoto 860-8797	096-328-5419
Naha	3-3-8, Tsubogawa, Naha, Okinawa 900-8799	098-833-5518

In addition to the above, there are 66 other branches.

8

Outline of Subsidiary

(As of July 1, 2015)

Company name	Location	Paid-in capital (Millions of yen)	Line of business	Date of establishment	Japan Post Insurance Ownership	Ownership of voting shares
Japan Post Insurance System Solutions Co., Ltd.	Shinagawa-ku, Tokyo	60	Commissioned design, development, maintenance and operations of information systems	March 8, 1985	100.0%	100.0%