

Corporate Data

CONTENTS

1. Outline of Japan Post Holdings Co., Ltd.

1. Company Outline	94	5. Organization Chart	96
2. Information on Shares.....	94	6. Principal Subsidiaries and Affiliates of Japan Post Holdings	97
3. Number of Employees	94	7. Teishin Hospitals.....	98
4. List of Directors, Executive Officers and Management Committees	95	8. Hotels	99

2. Outline of Japan Post Co., Ltd.

1. Company Outline	101	8. Post Offices by Prefecture	105
2. Management Philosophy	101	9. Principal Subsidiaries	107
3. Information on Shares.....	101	10. Number of Post Boxes	107
4. Number of Employees	101	11. Outsourcing	107
5. List of Directors, Auditors and Executive Officers	102	12. Number of Locations Selling Postage Stamps and Documentary Stamps	108
6. Organization Chart	103	13. Number of Postal Service Vehicles Owned ...	108
7. Names and Locations of Regional Offices.....	104		

3. Outline of Japan Post Bank Co., Ltd.

1. Company Outline	109	6. Organization Chart.....	111
2. Management Philosophy	109	7. Principal Business Locations	112
3. Information on Shares.....	109	8. Japan Post Bank Offices by Prefecture	112
4. Number of Employees	109	9. Number of ATMs by Prefecture	113
5. List of Directors, Executive Officers and Management Committees	110	10. Outline of Affiliated Companies	113

4. Outline of Japan Post Insurance Co., Ltd.

1. Company Outline	114	6. Organization Chart	116
2. Management Philosophy	114	7. Principal Branches.....	117
3. Information on Shares.....	114	8. Outline of Subsidiary	117
4. Number of Employees	115		
5. List of Directors, Executive Officers and Management Committees	115		

1. Outline of Japan Post Holdings Co., Ltd.

1

Company Outline

Company name (in Japanese):	Nippon Yusei Kabushiki Kaisha
Company name:	JAPAN POST HOLDINGS Co., Ltd.
Head office location:	3-2, Kasumigaseki 1-chome, Chiyoda-ku, Tokyo 100-8798, Japan
Telephone:	03-3504-4411 (Japan Post Group main number)
Paid-in capital:	¥3,500 billion
Date of establishment:	January 23, 2006
Legal basis:	Established under the Japan Post Holdings Co., Ltd. Act (Law No. 98 of October 21, 2005)
Lines of business:	Management of Group companies

2

Information on Shares

1. Number of Shares

Authorized number of shares	600,000,000
Total shares issued	150,000,000
Number of shareholders as of March 31, 2014	One

2. Shareholder

Minister of Finance	Condition of holdings	
	Shares owned	Percentage of total issued
	150,000,000	100%

3. Information on Rights to Purchase New Shares, etc.

None outstanding

3

Number of Employees

3,098* (as of March 31, 2014)

* The number of employees excludes employees assigned to other companies by Japan Post Holdings Co., Ltd. but includes employees assigned to Japan Post Holdings Co., Ltd. by other companies. The figures do not include part-time employees.

(As of July 1, 2014)

1. Directors

President & CEO (Representative Executive Officer).....	Taizo Nishimuro (Concurrently holds the positions of Director of Japan Post Co., Ltd., Director of Japan Post Bank Co., Ltd., and Director of Japan Post Insurance Co., Ltd.)
Executive Vice President (Representative Director).....	Yasuo Suzuki (Concurrently holds the position of Director of Japan Post Co., Ltd.)
Executive Vice President (Representative Director).....	Tatsuo Soda
Executive Vice President (Representative Director).....	Susumu Atsuki
Executive Vice President (Representative Director).....	Toshihide Komatsu
Director	Yoshiyuki Izawa (Concurrently holds the position of President & CEO of Japan Post Bank Co., Ltd.)
Director	Masami Ishii (Concurrently holds the position of President & CEO of Japan Post Insurance Co., Ltd.)
Director	Toru Takahashi (Concurrently holds the position of President & CEO of Japan Post Co., Ltd.)
Director (Outside)	Haruo Kasama (Attorney-at-Law)
Director (Outside)	Keiji Kimura (Concurrently holds the position of Chairman & Representative Director of Mitsubishi Estate Co., Ltd.)
Director (Outside)	Miwako Noma (Concurrently holds the position of Representative Director of Nippongurashi Co., Ltd.)
Director (Outside)	Fujio Mitarai (Concurrently holds the position of Chairman & CEO of Canon Inc.)
Director (Outside)	Akio Mimura (Concurrently holds the position of Senior Advisor and Honorary Chairman of Nippon Steel & Sumitomo Metal Corporation)
Director (Outside)	Tadashi Yagi (Concurrently holds the position of Auditor of Kyodo News Building Co., Ltd.)
Director (Outside)	Fumiaki Watari (Concurrently holds the position of Honorary Advisor of JX Holdings, Inc. and President & Representative Director of Private Finance Initiative Promotion Corporation of Japan)
Director (Outside)	Satoshi Seino (Concurrently holds the position of Chairman (Director) of East Japan Railway Company)

2. Executive Officers (Excludes persons with concurrent posts in the above 1. Directors)

Senior Managing Executive Officer	Kunio Tanigaki	Executive Officer	Kimihiko Oku
Senior Managing Executive Officer	Masatoshi Shinoda	Executive Officer	Susumu Inoue (Concurrently holds the position of Executive Officer of Japan Post Co., Ltd.)
Senior Managing Executive Officer	Seiji Katsuno	Executive Officer	Makoto Sakurai
Managing Executive Officer	Masayuki Nakayama	Executive Officer	Atsuko Onodera
Managing Executive Officer	Kenji Fukumoto	Executive Officer	Yoshiharu Miyazaki
Managing Executive Officer	Ryosuke Haraguchi	Executive Officer	Tsunehiko Matsuyama (Concurrently holds the position of Senior Executive Officer of Japan Post Co., Ltd.)
Managing Executive Officer	Noboru Ichikura	Executive Officer	Hidetake Kikuhara
Managing Executive Officer	Chikashi Isayama (Concurrently holds the position of Senior Managing Executive Officer of Japan Post Co., Ltd.)	Executive Officer	Katsuyuki Takahashi
Managing Executive Officer	Toshihiro Tsuboi (Concurrently holds the position of Executive Vice President (Representative Director) of Japan Post Co., Ltd.)	Executive Officer	Tsutomu Shomura
Managing Executive Officer	Susumu Tanaka (Concurrently holds the position of Director and Executive Vice President of Japan Post Bank Co., Ltd.)	Executive Officer	Takeshi Onodera
Managing Executive Officer	Tetsuya Senda (Concurrently holds the position of Managing Executive Officer of Japan Post Insurance Co., Ltd.)	Executive Officer	Mamiko Izumi

3. Nomination Committee

Chairperson	Akio Mimura
Member	Taizo Nishimuro
Member	Fujio Mitarai

4. Audit Committee

Chairperson	Haruo Kasama
Member	Miwako Noma
Member	Tadashi Yagi

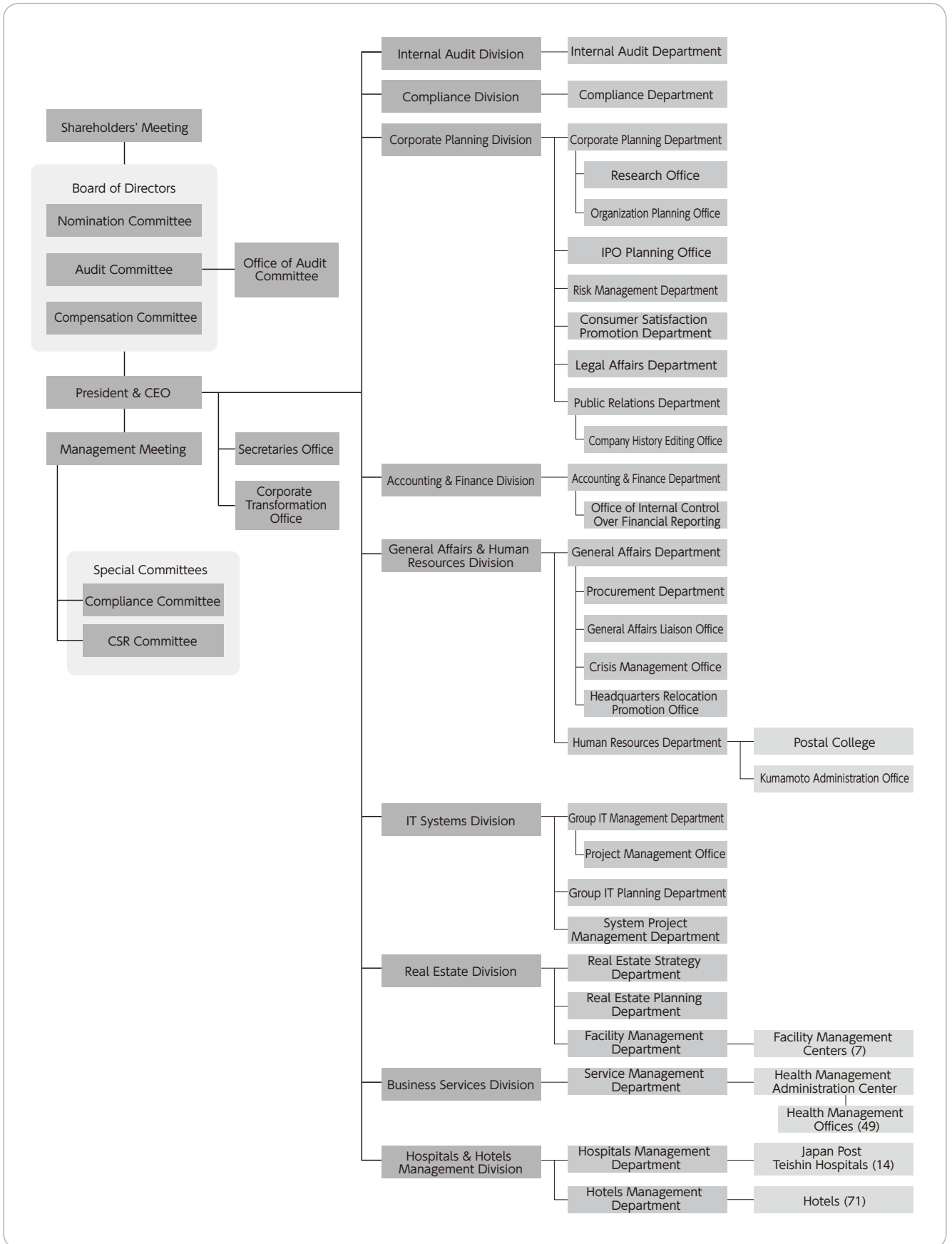
5. Compensation Committee

Chairperson	Taizo Nishimuro
Member	Haruo Kasama
Member	Fumiaki Watari

5

Organization Chart

(As of July 1, 2014)



6

Principal Subsidiaries and Affiliates of Japan Post Holdings

(As of March 31, 2014)

Affiliation	Company name	Location	Issued capital (millions)	Main business	Date of establishment	Percentage ownership of voting rights
Consolidated subsidiaries	Japan Post Co., Ltd.	Chiyoda-ku, Tokyo	¥100,000	Post office counter-related business and postal and parcel delivery operation	October 1, 2007	100.0% (0.0%)
	Japan Post Bank Co., Ltd.	Chiyoda-ku, Tokyo	¥3,500,000	Banking business	September 1, 2006	100.0% (0.0%)
	Japan Post Insurance Co., Ltd.	Chiyoda-ku, Tokyo	¥500,000	Life insurance business	September 1, 2006	100.0% (0.0%)
	Japan Post Staff Co., Ltd.	Minato-ku, Tokyo	¥140	Contract staffing service	July 3, 2007	100.0% (0.0%)
	Yusei Challenged Co., Ltd.	Setagaya-ku, Tokyo	¥5	Office cleaning, others	November 20, 2007	100.0% (0.0%)
	Japan Post Hotel Service Co., Ltd.	Saitama-shi, Saitama	¥39	Hotel management operations	December 26, 1996	100.0% (0.0%)
	Japan Post Information Technology Co., Ltd.	Minato-ku, Tokyo	¥150	Communication network maintenance and management	January 30, 1987	100.0% (0.0%)
	Japan Post Network Trading Service Co., Ltd.	Koto-ku, Tokyo	¥100	Merchandise business, contracting business for merchandise operations	September 11, 2007	100.0% (100.0%)
	Japan Post Building Management Co., Ltd.	Chiyoda-ku, Tokyo	¥150	Property management for commercial buildings	April 1, 2011	100.0% (100.0%)
	JP Logi Service Co., Ltd.	Osaka-shi, Osaka	¥34	Preparation and posting of postal items, parcels and mail items	October 15, 1968	67.6% (67.6%)
	JP Biz Mail Co., Ltd.	Adachi-ku, Tokyo	¥100	Preparation and posting of postal items	February 1, 2006	58.5% (58.5%)
	JP Media Direct Co., Ltd.	Minato-ku, Tokyo	¥300	Planning, development and sales of direct media and contracted shipment of merchandise	February 29, 2008	51.0% (51.0%)
	Japan Post Transport Co., Ltd.	Minato-ku, Tokyo	¥18,250	Truck cargo transportation	November 30, 2007	100.0% (100.0%)
	Japan Post Sankyu Global Logistics Co., Ltd.	Chuo-ku, Tokyo	¥300	International air freight forwarding	July 1, 2008	60.0% (60.0%)
	Japan Post International Logistics Co., Ltd.	Shanghai, China	CNY50	International logistics	September 6, 2013	100.0% (100.0%)
Japan Post Insurance System Solutions Co., Ltd.	Shibuya-ku, Tokyo	¥60	Commissioned design, development, maintenance and operation of information systems for the life insurance business and others	March 8, 1985	100.0% (100.0%)	
Affiliated companies accounted for under the equity method	SDP Center Co., Ltd.	Chuo-ku, Tokyo	¥2,000	Bank agency operations	May 28, 1980	45.0% (45.0%)
	ATM Japan Business Service, Ltd.	Shinjuku-ku, Tokyo	¥100	ATM operation management	August 30, 2012	35.0% (35.0%)
	JA Foods Oita Co., Ltd.	Kitsuki-shi, Oita	¥493	Processing and sales of agricultural products, fruits and vegetables	December 2, 1991	20.0% (20.0%)

Note: The figures in parentheses in the column showing percentage ownership of voting rights indicate the percentage of indirect ownership through consolidated subsidiaries.

7

Teishin Hospitals

(As of March 31, 2014)

Name of facility	Location	Telephone number
Sapporo Teishin Hospital	1-5-1, Kawazoe 14-jo, Minami-ku, Sapporo, Hokkaido 005-8798	011-571-5103
Sendai Teishin Hospital	5-1, Chuo 4-chome, Aoba-ku, Sendai, Miyagi 980-8798	022-268-3150
Yokohama Teishin Hospital	13-10, Nishi Kanagawa 1-chome, Kanagawa-ku, Yokohama, Kanagawa 221-8798	045-321-4782
Tokyo Teishin Hospital	14-23, Fujimi 2-chome, Chiyoda-ku, Tokyo 102-8798	03-5214-7111
Niigata Teishin Hospital	2-8, Yachiyo 2-chome, Chuo-ku, Niigata, Niigata 950-8798	025-244-4700
Toyama Teishin Hospital	2-29, Kashima-machi 2-chome, Toyama, Toyama 930-8798	076-423-7727
Nagoya Teishin Hospital	2-5, Izumi 2-chome, Higashi-ku, Nagoya, Aichi 461-8798	052-932-7151
Kyoto Teishin Hospital	109, Nishi Rokkakuchō, Shinmachi Nishiiru, Rokkakutori, Nakagyo-ku, Kyoto, Kyoto 604-8798	075-241-7167
Osaka Kita Teishin Hospital	1-6, Nakazaki 1-chome, Kita-ku, Osaka, Osaka 530-8798	06-6361-2071
Kobe Teishin Hospital	2-43, Kami-tsutsui Dori 6-chome, Chuo-ku, Kobe, Hyogo 651-8798	078-232-7519
Hiroshima Teishin Hospital	19-16, Higashi Hakushima-cho, Naka-ku, Hiroshima, Hiroshima 730-8798	082-224-5355
Tokushima Teishin Hospital	19-2, Iga-cho 3-chome, Tokushima, Tokushima 770-8798	088-623-8611
Fukuoka Teishin Hospital	6-11, Yakuin 2-chome, Chuo-ku, Fukuoka, Fukuoka 810-8798	092-741-0300
Kagoshima Teishin Hospital	12-1, Shimo Ishiki 1-chome, Kagoshima, Kagoshima 890-8798	099-223-6013

(As of July 1, 2014)

1. Kanpo no Yado Inns

Number	Name of facility	Location	Telephone number	Number of rooms	Notes
1	Otaru	2-670, Asarigawa Onsen, Otaru, Hokkaido 047-0154	0134-54-8511	21	Kazeru Otaru Annex
2	Tokachigawa	9-1, Kita, Tokachigawa Onsen, Otofuke-cho, Kato-gun, Hokkaido 080-0262	0155-46-2141	43	Closed for business on September 1 at check-out
3	Ichinoseki	147-5, Horyu, Genbi-cho, Ichinoseki, Iwate 021-0101	0191-29-2131	55	
4	Yokote	1-20, Shirotsuke, Mutsunari, Yokote, Akita 013-0008	0182-32-5055	42	Closed for business on September 1 at check-out
5	Matsushima	89-53, Minami-Akasaki, Nobiru, Higashi-Matsushima, Miyagi 981-0411	—	—	Temporarily closed
6	Sakata	17-26, Iimoriyama 3-chome, Sakata, Yamagata 998-8588	0234-31-4126	39	
7	Koriyama	3-198, Atami, Atami-machi, Koriyama, Fukushima 963-1380	024-984-3511	36	
8	Iwaki	60, Shibazaki, Tairafujima, Iwaki, Fukushima 970-0103	0246-39-2670	59	
9	Oarai	7986-2, Isohama-cho, Oarai-machi, Higashi-Ibaraki-gun, Ibaraki 311-1301	029-267-3191	52	
10	Itako	1830-1, Mizuhara, Itako, Ibaraki 311-2404	0299-67-5611	56	
11	Shiobara	1256, Shiobara, Nasushiobara, Tochigi 329-2921	0287-32-2845	39	
12	Tochigi Kitsuregawa Onsen	5296-1, Kitsuregawa, Sakura, Tochigi 329-1412	028-686-2822	53	
13	Kusatsu	464-1051, Kusatsu, Kusatsu-machi, Agatsuma-gun, Gunma 377-1794	0279-88-5761	48	Closed for business on September 1 at check-out
14	Isobe	22, Gobara, Annaka, Gunma 379-0135	027-385-6321	51	
15	Yorii	2267, Sueno, Yorii-machi, Osato-gun, Saitama 369-1205	048-581-1165	51	
16	Kamogawa	1137, Nishi-cho, Kamogawa, Chiba 296-0043	04-7092-1231	101	
17	Asahi	2280-1, Nittama, Asahi, Chiba 289-2525	0479-63-2161	61	
18	Katsuura	2183-5, Ubara, Katsuura, Chiba 299-5243	0470-76-3011	50	
19	Ome	668-2, Komaki-cho 3-chome, Ome, Tokyo 198-0053	0428-23-1171	56	
20	Hakone	159, Motohakone, Hakone-machi, Ashigarashimo-gun, Kanagawa 250-0522	0460-84-9126	29	
21	Isawa	348-1, Matsumoto, Isawa-cho, Fuefuki, Yamanashi 406-0021	055-262-3755	54	
22	Kashiwazaki	2-15, Kotobuki-cho, Kashiwazaki, Niigata 945-0846	—	—	Temporarily closed
23	Suwa	15-16, Owa 2-chome, Suwa, Nagano 392-0001	0266-52-1551	36	
24	Atami (Main Building)	12-3, Minaguchi-cho 2-chome, Atami, Shizuoka 413-0016	0557-83-6111	159	
	Atami (Annex)	13-77, Minaguchi-cho 2-chome, Atami, Shizuoka 413-0016	0557-83-6111	45	
25	Shuzenji	1257-4, Kumasaka, Izu, Shizuoka 410-2411	0558-72-3151	32	Closed for business on September 1 at check-out
26	Izukogen	1104-5, Yawatano, Ito, Shizuoka 413-0232	0557-51-4400	59	
27	Toyama	5691-2, Hane, Fuchu-machi, Toyama, Toyama 939-2694	076-469-3135	40	
28	Yamashiro	32-1, Onsen-dori, Yamashiro Onsen, Kaga, Ishikawa 922-0254	0761-77-1600	46	Closed for business on September 1 at check-out
29	Fukui	43-17, Fuchi-machi, Fukui, Fukui 918-8026	0776-36-5793	33	
30	Yaizu	1375-2, Hamatome, Yaizu, Shizuoka 425-8533	054-627-0661	40	
31	Hamanako-Mikkabi	2977-2, Tsuzuki, Mikkabi-cho, Kita-ku, Hamamatsu, Shizuoka 431-1496	053-526-1201	41	
32	Sangane	1-221, Nyukaizan, Higashihazu-cho, Nishio, Aichi 444-0701	0563-62-2650	32	
33	Chita-Mihama	39, Suhara, Okuda, Mihama-cho, Chita-gun, Aichi 470-3233	0569-87-1511	42	
34	Ena	2709, Oi-cho, Ena, Gifu 509-7201	0573-26-4600	54	
35	Gifu-Hashima	1041, Uaminami, Kuwabara-cho, Hashima, Gifu 501-6323	058-398-2631	40	

Number	Name of facility	Location	Telephone number	Number of rooms	Notes
36	Toba	1200-7, Arashima-cho, Toba, Mie 517-0021	0599-25-4101	58	
37	Kumano	1020-7, Ido-cho, Kumano, Mie 519-4324	0597-89-4411	27	
38	Hikone	3759, Matsubara-cho, Hikone, Shiga 522-0002	0749-22-8090	41	
39	Maizuru	224-5, Ueyasu, Maizuru, Kyoto 624-0912	—	—	Temporarily closed
40	Tondabayashi	880-1, Ryusen, Tondabayashi, Osaka 584-0053	0721-33-0700	43	
41	Yamatoheguri	16-1, Kamisho 2-chome, Heguri-cho, Ikoma-gun, Nara 636-0905	0745-45-0351	34	
42	Nara	9-1, Nijo-cho 3-chome, Nara, Nara 630-8002	0742-33-2351	40	
43	Shirahama	1688-2, Shirahama-cho, Nishimuro-gun, Wakayama 649-2211	0739-42-2980	31	
44	Kii-Tanabe	24-1, Mera, Tanabe, Wakayama 646-8501	0739-24-2900	52	
45	Arima	1617-1, Arima-cho, Kita-ku, Kobe, Hyogo 651-1401	078-904-0951	53	
46	Ako	883-1, Misaki, Ako, Hyogo 678-0215	0791-43-7501	50	
47	Awajishima	824, Toshima, Awaji, Hyogo 656-1711	0799-82-1073	40	
48	Kaike	1-7, Kaikeshinden 3-chome, Yonago, Tottori 683-0002	0859-33-4421	35	
49	Mimasaka Yunogo	674-7, Nakayama, Mimasaka, Okayama 707-0061	0868-72-5551	35	
50	Takehara	442-2, Nishino-cho, Takehara, Hiroshima 725-0002	0846-29-0141	40	
51	Hikari	31-1, Murozumi-Higashinosh, Hikari, Yamaguchi 743-0005	0833-78-1515	40	
52	Yuda	1-42, Kanda-cho, Yamaguchi, Yamaguchi 753-0064	083-922-5226	40	
53	Kanonji	1101-4, Ikenoshiri-cho, Kanonji, Kagawa 768-0031	0875-27-6161	55	
54	Sakaide	2048-91, Takaya-cho, Sakaide, Kagawa 762-0017	0877-47-0531	41	
55	Tokushima	3-70, Nakatsuyama, Hachiman-cho, Tokushima, Tokushima 770-8071	088-625-1255	46	
56	Dogo	3-1, Mizonobe-machi, Matsuyama, Ehime 791-0101	089-977-0460	54	
57	Ino	1569, Hakawa, Ino-cho, Agawa-gun, Kochi 781-2128	088-892-1580	52	
58	Kitakyushu	2829, Arige, Wakamatsu-ku, Kitakyushu, Fukuoka 808-0123	093-741-1335	50	
59	Yanagawa	10-1, Yashiro-machi, Yanagawa, Fukuoka 832-0057	0944-72-6295	40	
60	Shimabara	8362-3, Hakusan-machi, Shimabara, Nagasaki 855-0824	—	—	Temporarily closed
61	Beppu	457, Tsurumi, Beppu, Oita 874-0844	0977-66-1271	49	
62	Hita	685-6, Nakanoshima-machi, Hita, Oita 877-0074	0973-24-0811	53	
63	Yamaga	2450, Shijiki, Yamaga, Kumamoto 861-0542	0968-43-5121	28	
64	Aso	5936, Miyaji, Ichinomiya-machi, Aso, Kumamoto 869-2612	0967-22-1122	66	
65	Nichinan	2228-1, Hoshikura, Nichinan, Miyazaki 889-2533	0987-22-5171	46	
66	Recreation Center in Naha	9-15, Minato-machi 2-chome, Naha, Okinawa 900-0001	098-862-4740	70	

2. Kanpo no Sato Inns

Number	Name of facility	Location	Telephone number	Number of rooms	Notes
67	Hakusan-Oguchi	43-3, U, Seto, Hakusan, Ishikawa 920-2331	076-256-8080	53	Closed for business on November 30
68	Shobara	281-1, Shinjo-cho, Shobara, Hiroshima 727-0004	0824-73-1800	62	
69	Usa	1571-1, Kawabe, Usa, Oita 879-0452	0978-37-2288	32	

3. Rafre Saitama and Other Facilities

Number	Name of facility	Location	Telephone number	Number of rooms	Notes
70	Rafre Saitama	3-2, Shintoshin, Chuo-ku, Saitama, Saitama 330-0081	048-601-1111	186	
71	U-Port Recreation Center in Setagaya	17-1, Kamata 2-chome, Setagaya, Tokyo 157-0077	03-3709-0161	—	

Notes 1: For more details, contact the hotels directly or call the customer service center of *Kanpo no Yado* inns at 0120-715294 (weekdays: 9:30 to 17:30).

2: Each accommodation facility has formed a disaster agreement beforehand with local municipalities to provide evacuation areas, bathing facilities and food in accordance with requests from these municipalities (except Koriyama).

2. Outline of Japan Post Co., Ltd.

1 Company Outline

Company name (in Japanese):	Nippon Yubin Kabushiki Kaisha
Company name:	JAPAN POST Co., Ltd.
Head office location:	3-2, Kasumigaseki 1-chome, Chiyoda-ku, Tokyo 100-8798, Japan
Telephone:	03-3504-4411 (Japan Post Group main number)
Paid-in capital:	¥100 billion
Date of establishment:	October 1, 2007
Legal basis:	Established under the Japan Post Co., Ltd. Act (Law No. 100 of October 21, 2005)
Lines of business:	Postal operations; banking counter operations; insurance counter operations; sales of documentary stamps; operations consigned by local government entities; bank and life and non-life insurance agency services other than those mentioned previously; domestic distribution and delivery business and international cargo transport and agency services for air cargo business; logistics business; real estate business; and merchandise sales

2 Management Philosophy

Management Philosophy

"Japan Post Co., Ltd. will fully utilize its resources that include its post office and delivery networks covering every corner of the country to provide safe, reliable and fast services tailored to the needs of each community while contributing to the realization of a society with an abundance of human contact by supporting people's lifestyles throughout their entire lives."

- We will provide the basic postal services of postal, banking and insurance services extensively across the country into the future.
- We will take on the challenge of providing innovative services that respond accurately to changes in society and enrich people's lives.
- We will fulfill our responsibilities as a corporate citizen by establishing corporate governance systems and strictly implementing compliance.
- Each and every employee will continue to grow to ensure we are appreciated by our customers and trusted and respected by local communities.

3 Information on Shares

1. Number of Shares

Total shares issued	4,000,000
---------------------	-----------

2. Shareholder

Japan Post Holdings Co., Ltd.	Condition of holdings	
	Shares owned	Percentage of total issued
	4,000,000	100%

4 Number of Employees

194,688* (as of March 31, 2014)

* The number of employees excludes employees assigned to other companies by Japan Post Co., Ltd. but includes employees assigned to Japan Post Co., Ltd. by other companies. The figures do not include part-time employees.

1. Directors

President & CEO (Representative Executive Officer).....	Toru Takahashi (Concurrently holds the position of Director of Japan Post Holdings Co., Ltd.)
Executive Vice President (Representative Director).....	Toshihiro Tsuboi (Concurrently holds the position of Managing Executive Officer of Japan Post Holdings Co., Ltd.)
Executive Vice President (Representative Director).....	Seiki Fukuda
Director (Outside)	Kenji Kitahara (Former member of the NHK Management Committee)
Director (Outside)	Yasuo Suzuki (Concurrently holds the position of Representative Director and Executive Vice President of Japan Post Holdings Co., Ltd.)
Director (Outside)	Risa Tanaka (Concurrently holds the position of Executive Vice President and Executive Editor of Sendenkaigi Co., Ltd.)
Director (Outside)	Toyohiko Takabe (Concurrently holds the position of Advisor of Nippon Telegraph and Telephone East Corporation)
Director (Outside)	Taizo Nishimuro (Concurrently holds the position of Representative Executive Officer and President & CEO of Japan Post Holdings Co., Ltd.)
Director (Outside)	Michiko Hirono (Concurrently holds the position of President & Representative Director of 21 Lady Co., Ltd.)

2. Auditors

Haruki Inuma
Yoshio Haibara
Hisamitsu Gannyo

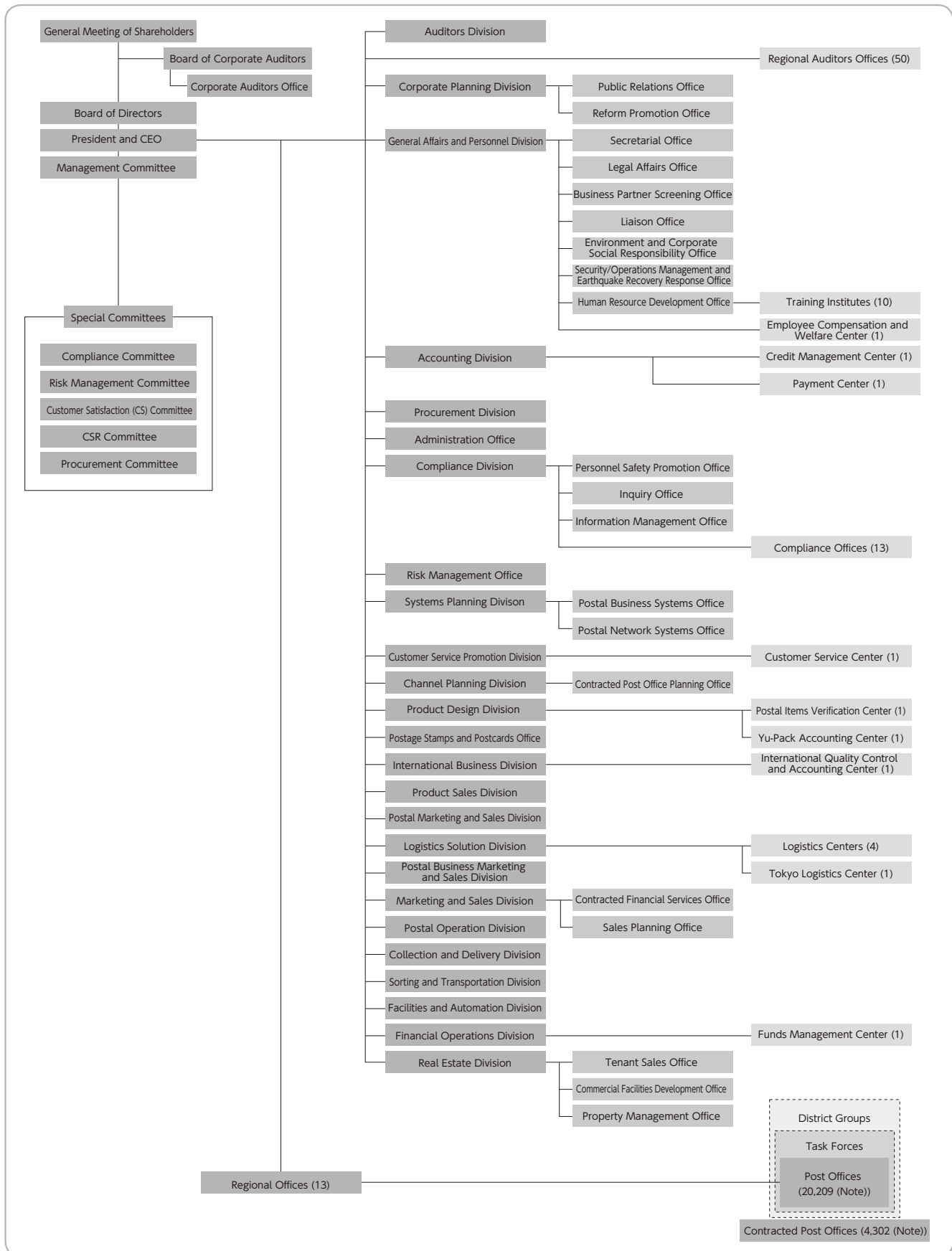
3. Executive Officers

Vice President	Shin Ueda	Executive Officer	Kazuaki Daikaku
First Executive Officer (Concurrently holds the position of Managing Executive Officer of Japan Post Holdings Co., Ltd.)	Chikashi Isayama	Executive Officer	Keiichi Yano
First Executive Officer	Kenji Sasaki	Executive Officer	Koji Wada
First Executive Officer (Concurrently holds the position of Senior Managing Executive Officer of Japan Post Bank Co., Ltd.)	Satoshi Hoshino	Executive Officer (Concurrently holds the position of Executive Officer of Japan Post Holdings Co., Ltd.)	Susumu Inoue
Senior Executive Officer	Manabu Kawamura	Executive Officer	Ryutaro Yamamoto
Senior Executive Officer	Yuji Uenuma	Executive Officer	Keiichi Shirato
Senior Executive Officer	Junichiro Miyazaki	Executive Officer	Yoshiyuki Higuchi
Senior Executive Officer	Hisaharu Nakajima	Executive Officer	Hiroaki Kawamoto
Senior Executive Officer	Shuji Obu	Executive Officer (Concurrently holds the position of Executive Officer of Japan Post Bank Co., Ltd.)	Makoto Fukumoto
Senior Executive Officer	Naoki Nakashima	Executive Officer	Hitoshi Arawaka
Senior Executive Officer	Toru Inasawa	Executive Officer	Toshiyuki Yazaki
Senior Executive Officer	Shuzo Inoue	Executive Officer	Satoru Tatebayashi
Senior Executive Officer (Concurrently holds the position of Executive Officer of Japan Post Holdings Co., Ltd.)	Tsunehiko Matsuyama	Executive Officer	Nobuo Tsuruda
		Executive Officer	Mitsuyuki Yamamoto
		Executive Officer	Kazuya Hino
		Executive Officer	Masahiko Metoki
		Executive Officer	Masayuki Tokushige
		Executive Officer	Katsuhiko Tsuyama

6

Organization Chart

(As of July 1, 2014)



Note: The number of directly managed post offices and contracted post offices is as of March 31, 2014.

7

Names and Locations of Regional Offices

(As of July 1, 2014)

Name of regional office	Location
Hokkaido	4-3, Kita Nijo Nishi, Chuo-ku, Sapporo, Hokkaido 060-8797
Tohoku	1-34, Ichiban-cho 1-chome, Aoba-ku, Sendai, Miyagi 980-8797
Kanto	3-1, Shintoshin, Chuo-ku, Saitama, Saitama 330-9797
Tokyo	6-19, Azabudai 1-chome, Minato-ku, Tokyo 106-8797
Minami Kanto	1-1, Sakuragi-cho, Naka-ku, Yokohama, Kanagawa 231-8694
Shinetsu	801, Kurita, Nagano, Nagano 380-8797
Hokuriku	1-15, Kamitsutsumi-cho, Kanazawa, Ishikawa 920-8797
Tokai	2-5, Marunouchi 3-chome, Naka-ku, Nagoya, Aichi 469-8797
Kinki	3-9, Kitahama Higashi, Chuo-ku, Osaka, Osaka 530-8797
Chugoku	19-8, Higashi Hakushima-cho, Naka-ku, Hiroshima, Hiroshima 730-8797
Shikoku	8-5, Miyata-cho, Matsuyama, Ehime 790-8797
Kyushu	1-1, Joto-machi, Chuo-ku, Kumamoto, Kumamoto 860-8797
Okinawa	26-29, Higashi-machi, Naha, Okinawa 900-8797

8

Post Offices by Prefecture

(As of March 31, 2014)

Prefecture	Post offices in service				Post offices out of service				Grand total
	Directly managed post offices		Contracted post offices	Total	Directly managed post offices		Contracted post offices	Total	
	Regular post offices	Post office branches			Regular post offices	Post office branches			
Hokkaido	1,211	1	285	1,497	1	0	15	16	1,513
Aomori	267	0	95	362	0	0	0	0	362
Iwate	299	1	119	419	9	0	5	14	433
Miyagi	345	0	87	432	17	0	6	23	455
Akita	273	0	127	400	0	0	1	1	401
Yamagata	289	0	107	396	0	0	2	2	398
Fukushima	411	0	108	519	21	0	8	29	548
Ibaraki	465	0	53	518	0	0	3	3	521
Tochigi	312	0	46	358	0	0	1	1	359
Gunma	302	0	38	340	0	0	0	0	340
Saitama	625	0	19	644	0	0	0	0	644
Chiba	690	0	32	722	0	0	2	2	724
Kanagawa	749	0	13	762	1	0	2	3	765
Yamanashi	202	0	62	264	0	0	4	4	268
Tokyo	1,485	2	6	1,493	15	0	0	15	1,508
Niigata	534	0	139	673	0	0	9	9	682
Nagano	445	0	198	643	0	0	17	17	660
Toyama	213	0	76	289	0	0	3	3	292
Ishikawa	254	0	70	324	0	0	4	4	328
Fukui	210	0	32	242	0	0	1	1	243
Gifu	355	0	90	445	0	0	12	12	457
Shizuoka	484	0	101	585	0	0	18	18	603
Aichi	836	3	78	917	0	0	16	16	933
Mie	372	0	85	457	0	0	10	10	467
Shiga	230	0	31	261	0	0	1	1	262
Kyoto	441	0	33	474	1	0	1	2	476
Osaka	1,085	4	30	1,119	0	0	1	1	1,120
Hyogo	840	2	120	962	0	0	3	3	965
Nara	241	0	80	321	0	0	2	2	323
Wakayama	263	0	54	317	0	0	0	0	317
Tottori	147	0	96	243	0	0	4	4	247
Shimane	257	0	117	374	0	0	5	5	379
Okayama	417	2	105	524	0	0	10	10	534
Hiroshima	583	0	116	699	0	0	5	5	704

Prefecture	Post offices in service				Post offices out of service				Grand total
	Directly managed post offices		Contracted post offices	Total	Directly managed post offices		Contracted post offices	Total	
	Regular post offices	Post office branches			Regular post offices	Post office branches			
Yamaguchi	355	0	58	413	0	0	7	7	420
Tokushima	202	0	31	233	0	0	6	6	239
Kagawa	189	0	28	217	0	0	10	10	227
Ehime	317	0	76	393	0	0	7	7	400
Kochi	229	0	91	320	0	0	3	3	323
Fukuoka	714	0	94	808	0	0	3	3	811
Saga	166	0	40	206	0	0	1	1	207
Nagasaki	310	0	135	445	0	0	3	3	448
Kumamoto	391	0	175	566	0	0	3	3	569
Oita	307	0	93	400	1	0	1	2	402
Miyazaki	196	0	112	308	0	0	2	2	310
Kagoshima	436	2	279	717	0	0	4	4	721
Okinawa	181	1	21	203	0	0	0	0	203
Nationwide total	20,125	18	4,081	24,224	66	0	221 (Note 1)	287 (Note 2)	24,511

* Contracted post offices operate under consignment contracts.

"Post offices out of service" are post offices for which customers have been informed of a temporary closure and postal counter operations have been ceased.

Note 1: Services in areas where contracted post offices have been closed are as follows.

Number of instances where services are provided by personnel dispatched to the location	Number of instances where services are provided by 2 mobile post offices
43	3

Of the mobile post offices, one has been dispatched to the disaster regions and therefore its service has been temporarily suspended.

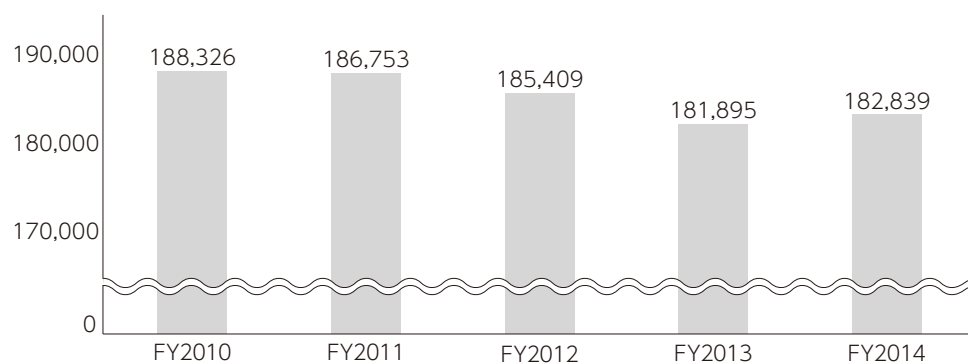
Note 2: Post offices out of service are as follows.

	Closed due to the Great East Japan Earthquake	Closed for reasons other than the Great East Japan Earthquake	Total
Directly managed post offices	47	19	66
Contracted post offices	15	206	221

(As of March 31, 2014)

Affiliation	Company name	Location	Paid-in capital (millions)	Line of business	Date of establishment	Japan Post ownership	Ownership of voting shares
Consolidated Subsidiaries	Japan Post Network Trading Service Co., Ltd.	Koto-ku, Tokyo	¥100	Merchandise business, contacting business for merchandise operations	September 11, 2007	100.0%	100.0%
	Japan Post Building Management Co., Ltd.	Chiyoda-ku, Tokyo	¥150	Property management for commercial buildings	April 1, 2011	100.0%	100.0%
	JP Logi Service Co., Ltd.	Osaka-shi, Osaka	¥34	Preparation and posting of postal items, parcels and mail items	October 15, 1968	67.6%	67.6%
	JP Biz Mail Co., Ltd.	Adachi-ku, Tokyo	¥100	Preparation and posting of postal items	February 1, 2006	51.0%	58.5%
	JP Media Direct Co., Ltd.	Minato-ku, Tokyo	¥300	Planning, development and sales of direct media and contracted shipment of merchandise	February 29, 2008	51.0%	51.0%
	Japan Post Transport Co., Ltd.	Minato-ku, Tokyo	¥18,250	Truck cargo transportation	November 30, 2007	100.0%	100.0%
	Japan Post Sankyu Global Logistics Co., Ltd.	Chuo-ku, Tokyo	¥300	International air freight forwarding	July 1, 2008	60.0%	60.0%
	Japan Post International Logistics Co., Ltd.	Shanghai, China	CNY50	International logistics	September 6, 2013	100.0%	100.0%

(Post boxes)



Japan Post outsources some of its business activities as prescribed by law.

■ Outsourcing of Transport of Postal Materials or others

The following table shows the status for the outsourcing of the collection, transport and delivery operations to transport companies and other parties as prescribed in the Law for Outsourcing Postal Material Transport (1949 Law No. 284).

(Millions of yen)

Category	FY2012	FY2013	FY2014
Collection, delivery and transport outsourcing expenses	198,258	172,044	173,568

Note: Collection, delivery and transport expenses include expenses paid for the outsourcing of the collection, transport and delivery of postal materials, etc., to transport companies, etc. In addition, these expenses include miscellaneous expenses for the outsourcing of the collection, transport and delivery of postal materials, etc., such as the cost of renting the collection and delivery worksite, expressway tolls and other items.

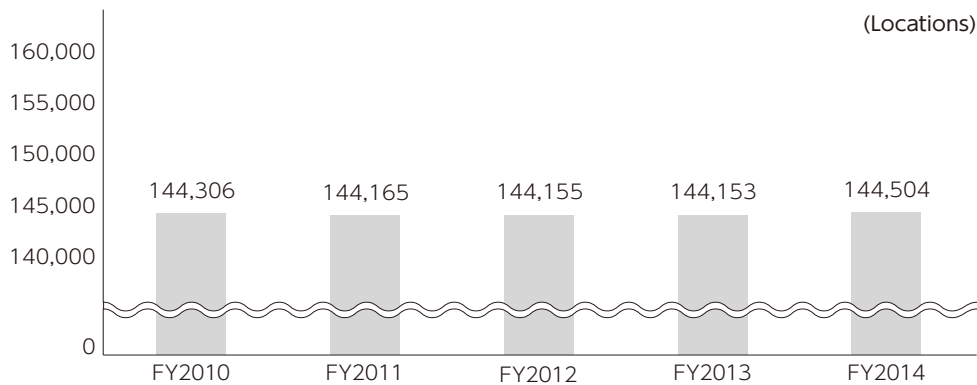
■ Outsourcing of Sale of Postage Stamps or others

The following table shows the status of outsourcing of the sale of postage stamps, etc., as prescribed in the Law Concerning Locations for the Sale of Postage Stamps (1949 Law No. 91).

(Millions of yen)

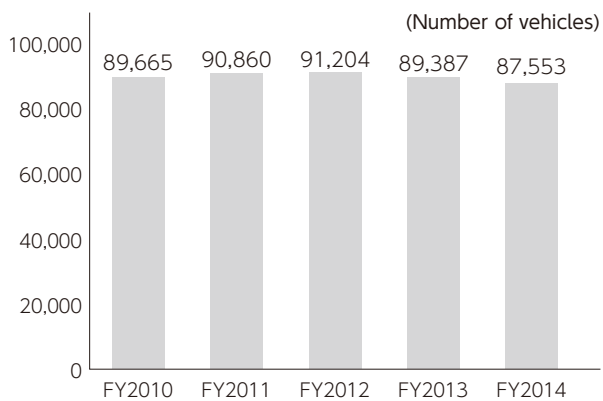
Category	FY2012	FY2013	FY2014
Fees paid to locations selling postage stamps	19,655	18,960	18,713

12 Number of Locations Selling Postage Stamps and Documentary Stamps

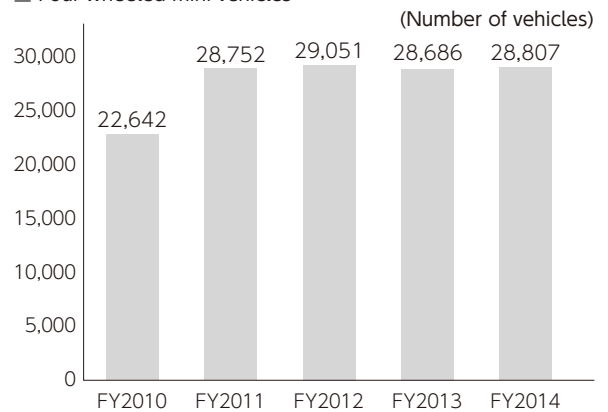


13 Number of Postal Service Vehicles Owned

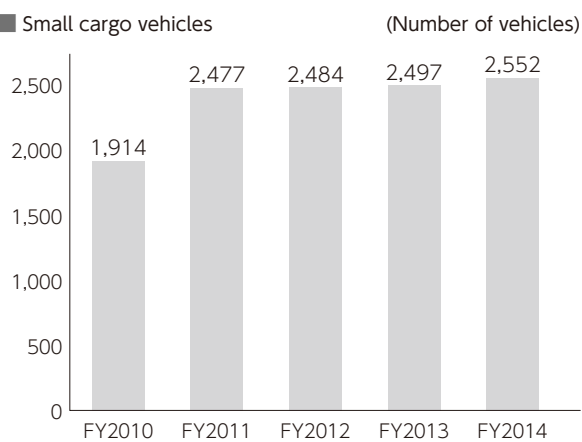
■ Two-wheeled vehicles (including small motor vehicles)



■ Four-wheeled mini vehicles



■ Small cargo vehicles



3. Outline of Japan Post Bank Co., Ltd.

1 Company Outline

Company name (in Japanese):	Kabushiki Kaisha Yucho Ginko
Company name:	JAPAN POST BANK Co., Ltd.
Head office location:	3-2, Kasumigaseki 1-chome, Chiyoda-ku, Tokyo 100-8798, Japan
Telephone:	03-3504-4411 (Japan Post Group main number)
Paid-in capital:	¥3,500 billion
Date of establishment:	September 1, 2006 (On October 1, 2007, the name was changed from Yucho Co., Ltd. to Japan Post Bank Co., Ltd.)
Line of business:	Banking
Financial institution code number:	9900

2 Management Philosophy

Management Philosophy

Japan Post Bank is dedicated to serving as "the most accessible and trustworthy bank in Japan," with operations that are guided by the needs and wishes of our customers.

Trustworthy:	We will comply with laws regulations and other standards of behavior in order to earn the trust of markets, shareholders and employees and consistently serve as a responsible corporate citizen.
Innovation:	We will constantly use innovative ideas to improve our management and business activities in response to input from customers and changes in market conditions.
Efficiency:	We will pursue improvements in speed and efficiency in order to be a source of products and services that match our customers' requirements.
Expertise:	We will work continually on upgrading expertise in specialized fields with the aim of meeting the high expectations of our customers.

3 Information on Shares

1. Number of Shares

Total shares issued	150,000,000
---------------------	-------------

2. Shareholder

Japan Post Holdings Co., Ltd.	Condition of holdings	
	Shares owned	Percentage of total issued
	150,000,000	100%

4 Number of Employees

12,963* (as of March 31, 2014)

* The number of employees excludes employees assigned to other companies by the Bank but includes employees assigned to the Bank by other companies. The figures do not include short-term contract and part-time employees.

(As of July 1, 2014)

1. Board of Directors

Representative Executive Officer (President & CEO).....	Yoshiyuki Izawa (Concurrently holds the position of Director of Japan Post Holdings Co., Ltd.)
Representative Executive Vice President.....	Tomohiro Yonezawa
Executive Vice President.....	Susumu Tanaka (Concurrently holds the position of Managing Executive Officer of Japan Post Holdings Co., Ltd.)
Outside Director	Tomoyoshi Arita (Attorney-at-Law)
Outside Director	Taizo Nishimuro (Concurrently holds the position of Representative Executive Officer and President & CEO of Japan Post Holdings Co., Ltd.)
Outside Director	Yoshifumi Iwasaki (Formerly held the position of President & CEO of Mitsui Fudosan Realty Co., Ltd.)
Outside Director	Yoshizumi Nezu (Concurrently holds the position of President & Representative Director of Tobu Railway Co., Ltd.)
Outside Director	Sawako Nohara (Concurrently holds the position of President & Representative Director of IPSe Marketing, Inc.)
Outside Director	Tetsu Machida (Economics Journalist)

2. Executive Officers (Excludes persons with concurrent posts in the above 1. Board of Directors)

Executive Vice President	Tomohisa Mase	Executive Officer	Yoko Makino
Senior Managing Executive Officer	Shuichi Ikeda	Executive Officer	Kunihiko Amaha
Senior Managing Executive Officer	Masahiro Murashima	Executive Officer	Masato Wakai
Senior Managing Executive Officer	Hiroshi Yamada	Executive Officer	Masaya Aida
Senior Managing Executive Officer	Satoshi Hoshino (Concurrently holds the position of First Executive Officer of Japan Post Co., Ltd.)	Executive Officer	Katsumi Amano
Managing Executive Officer	Riki Mukai	Executive Officer	Yoichi Uno
Managing Executive Officer	Hiroichi Shishimi	Executive Officer	Harumi Yano
Managing Executive Officer	Chiharu Komachi	Executive Officer	Yasuyuki Hori
		Executive Officer	Norio Wakasa
		Executive Officer	Masahiro Nishimori
		Executive Officer	Makoto Shinmura
		Executive Officer	Suzunori Hayashi
		Executive Officer	Makoto Fukumoto (Concurrently holds the position of Executive Officer of Japan Post Co., Ltd.)
		Executive Officer	Satoru Ogata
		Executive Officer	Minoru Kotouda
		Executive Officer	Fujie Kawasaki

3. Nomination Committee

Chairman	Taizo Nishimuro
Member	Yoshifumi Iwasaki
Member	Yoshizumi Nezu

4. Audit Committee

Chairman	Tomoyoshi Arita
Member	Sawako Nohara
Member	Tetsu Machida

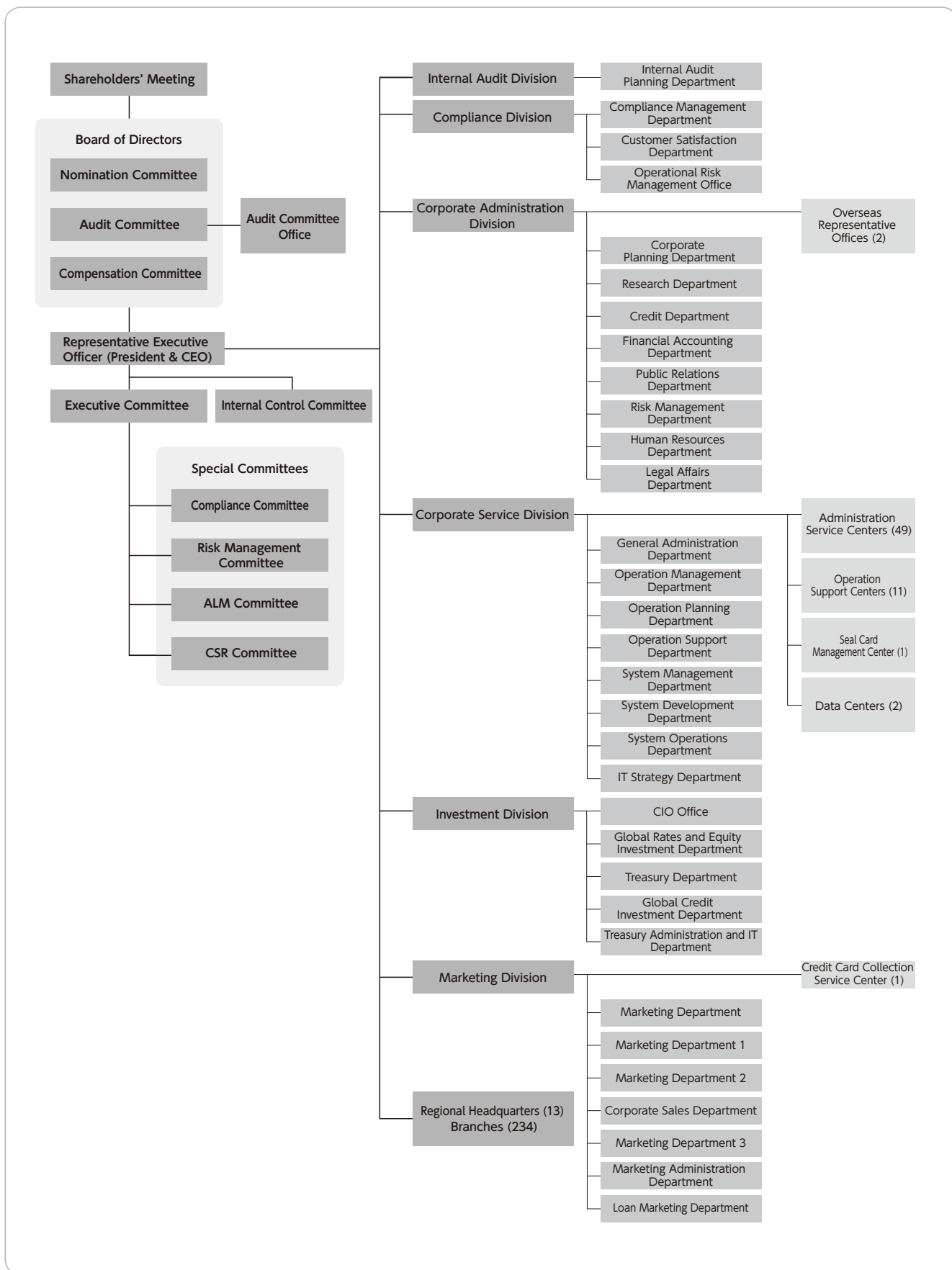
5. Compensation Committee

Chairman	Taizo Nishimuro
Member	Yoshifumi Iwasaki
Member	Yoshizumi Nezu

6

Organization Chart

(As of July 1, 2014)



Corporate Data

Financial Data

Others

7

Principal Business Locations

Head Office and 234 Branches

(As of March 31, 2014)

Name of branch	Location	Telephone number
Sapporo Branch	4-3, Kita Nijo Nishi, Chuo-ku, Sapporo, Hokkaido 060-0002	011-214-4300
Sendai Branch	3-3, Ichibancho 1-chome, Aoba-ku, Sendai, Miyagi 980-8711	022-267-8275
Saitama Branch	1-12, Bessho 7-chome, Minami-ku, Saitama, Saitama 336-8799	048-864-7317
Central Branch	7-2, Marunouchi 2-chome, Chiyoda-ku, Tokyo 100-8996	03-3284-9618
Nagano Branch	1085-4, Minami Agata-machi, Nagano, Nagano 380-8799	026-226-2550
Kanazawa Branch	1-1, Sanja-machi, Kanazawa, Ishikawa 920-8799	076-224-3844
Nagoya Branch	1-10, Osu 3-chome, Naka-ku, Nagoya, Aichi 460-8799	052-261-6728
Osaka Branch	2-4, Umeda 3-chome, Kita-ku, Osaka, Osaka 530-0001	06-6347-8112
Hiroshima Branch	6-36, Moto-machi, Naka-ku, Hiroshima, Hiroshima 730-0011	082-222-1315
Matsuyama Branch	5-2, Sanban-cho 3-chome, Matsuyama, Ehime 790-8799	089-941-0820
Kumamoto Branch	1-1, Joto-machi, Chuo-ku, Kumamoto, Kumamoto 860-0846	096-328-5163
Naha Branch	1-1, Kumoji 1-chome, Naha, Okinawa 900-0015	098-867-8802

8

Japan Post Bank Offices by Prefecture

(As of March 31, 2014) (Branches/Post offices)

Prefecture	Head Office/Principal prefectural offices	Sub-branches	Japan Post Bank agents		Total
			Post offices	Contracted post offices	
Hokkaido	1	4	1,207	281	1,493
Aomori	0	2	265	95	362
Iwate	0	1	307	120	428
Miyagi	1	1	359	88	449
Akita	0	1	273	128	402
Yamagata	0	1	288	107	396
Fukushima	0	3	430	114	547
Ibaraki	0	3	462	53	518
Tochigi	0	2	309	46	357
Gunma	0	3	299	38	340
Saitama	1	16	607	18	642
Chiba	0	13	677	33	723
Kanagawa	0	31	718	13	762
Yamanashi	0	1	200	61	262
Tokyo	1	40	1,444	6	1,491
Niigata	0	3	531	136	670
Nagano	1	2	441	196	640
Toyama	0	2	210	75	287
Ishikawa	1	0	251	70	322
Fukui	0	1	209	31	241
Gifu	0	2	353	83	438
Shizuoka	0	5	478	87	570
Aichi	1	13	822	75	911
Mie	0	2	370	82	454
Shiga	0	1	229	31	261
Kyoto	0	4	437	33	474
Osaka	1	23	1,059	30	1,113
Hyogo	0	12	828	120	960
Nara	0	2	239	80	321

Prefecture	Head Office/Principal prefectural offices	Sub-branches	Japan Post Bank agents		Total
			Post offices	Contracted post offices	
Wakayama	0	1	262	54	317
Tottori	0	1	146	95	242
Shimane	0	1	256	117	374
Okayama	0	2	415	106	523
Hiroshima	1	3	579	116	699
Yamaguchi	0	3	352	58	413
Tokushima	0	1	201	31	233
Kagawa	0	2	187	26	215
Ehime	1	1	314	75	391
Kochi	0	1	228	89	318
Fukuoka	0	4	708	93	805
Saga	0	1	165	38	204
Nagasaki	0	2	308	136	446
Kumamoto	1	1	389	175	566
Oita	0	2	306	93	401
Miyazaki	0	1	195	112	308
Kagoshima	0	1	437	281	719
Okinawa	1	0	179	20	200
Total	12	222	19,929	4,045	24,208

Note 1: The number of post offices refers to the number of sales offices and branches handling bank agency services (including sub-offices).

2: The number of contracted post offices refers to the number of sales offices or branches commissioned to handle bank agency services by Japan Post Co., Ltd. on behalf of Japan Post Bank Co., Ltd.

3: The number of mobile post offices in Aichi and Tokushima Prefectures is not included in the above totals.

9 Number of ATMs by Prefecture

(As of March 31, 2014)

Prefecture	Number of ATMs
Hokkaido	1,675
Aomori	318
Iwate	348
Miyagi	511
Akita	313
Yamagata	323
Fukushima	502
Ibaraki	580
Tochigi	369
Gunma	356
Saitama	948
Chiba	970
Kanagawa	1,176
Yamanashi	223
Tokyo	2,538
Niigata	644

Prefecture	Number of ATMs
Nagano	536
Toyama	253
Ishikawa	321
Fukui	244
Gifu	413
Shizuoka	587
Aichi	1,148
Mie	425
Shiga	294
Kyoto	583
Osaka	1,589
Hyogo	1,141
Nara	296
Wakayama	298
Tottori	165
Shimane	289

Prefecture	Number of ATMs
Okayama	511
Hiroshima	788
Yamaguchi	436
Tokushima	235
Kagawa	241
Ehime	403
Kochi	274
Fukuoka	1,016
Saga	214
Nagasaki	378
Kumamoto	473
Oita	355
Miyazaki	236
Kagoshima	503
Okinawa	259
Total	26,698

10 Outline of Affiliated Companies

(As of March 31, 2014)

Company name	Location	Paid-in capital (Millions of yen)	Line of business	Date of establishment	Japan Post Bank ownership	Ownership of voting shares
SDP Center Co., Ltd.	Chuo-ku, Tokyo	2,000	Bank agency operations	May 28, 1980	45.0%	45.0%
ATM Japan Business Service, Ltd.	Minato-ku, Tokyo	100	ATM cash loading and collection as well as ATM management	August 30, 2012	35.0%	35.0%

4. Outline of Japan Post Insurance Co., Ltd.

1 Company Outline

Company name (in Japanese) :	Kabushiki Kaisha Kanpo Seimei Hoken
Company name:	JAPAN POST INSURANCE Co., Ltd.
Head office location:	3-2, Kasumigaseki 1-chome, Chiyoda-ku, Tokyo 100-8798, Japan
Telephone:	03-3504-4411 (Japan Post Group main number)
Paid-in capital:	¥500 billion
Date of establishment:	September 1, 2006 (The name of the company was changed from Kanpo Co., Ltd. to Japan Post Insurance Co., Ltd., on October 1, 2007.)
Line of business:	Life insurance

2 Management Philosophy

Management Philosophy

Moving forward with our customers while serving as “Japan’s most familiar and trusted insurance company”

To translate this philosophy into specific activities, Japan Post Insurance makes the following promises to stakeholders.

Our promise to customers

We value every contact with customers. We will offer products and services that are easy to understand and use. We will supply accurate information so that customers can use these products and services with confidence.

Our promise to shareholders

We will aim to continuously enhance corporate value to fulfill our obligation to shareholders. We will use sound management systems backed by a suitable risk management framework. We will maintain strong lines of communication with shareholders and other investors.

Our promise to society

We will make compliance one of the most important elements of our business activities. We will actively contribute to public health. We will operate in a manner that is kind to people and eco-friendly.

Our promise to business partners

We will build mutually beneficial relationships based on close cooperation and extensive support. We will supply services and improve the quality of those services by working closely with our business partners. We will increase the value of our brand as a member of the Japan Post Group.

Our promise to employees

We will provide employees with a pleasant and rewarding workplace. We will respect each employee and provide equal opportunities to everyone. We will provide many forms of assistance for employees to upgrade their skills.

3 Information on Shares

1. Number of Shares

Total shares issued	20,000,000
---------------------	------------

2. Shareholder

Japan Post Holdings Co., Ltd.	Condition of holdings	
	Shares owned	Percentage of total issued
	20,000,000	100%

4 Number of Employees

6,948* (as of March 31, 2014)

* The number of employees excludes employees assigned to other companies by Japan Post Insurance Co., Ltd. but includes employees assigned to Japan Post Insurance Co., Ltd. by other companies. The figures do not include short-term contract and part-time employees.

5 List of Directors, Executive Officers and Management Committees

1. Directors

(As of July 1, 2014)

President, CEO	
Representative Executive Officer	Masami Ishii (Concurrently holds the position of Director, Japan Post Holdings Co., Ltd.)
Deputy President	
Representative Executive Officer	Toshihisa Minakata
Director (Outside)	Masaharu Hino (Attorney-at-Law)
Director (Outside)	Taizo Nishimuro (Concurrently holds the position of Representative Executive Officer and President & CEO, Japan Post Holdings Co., Ltd.)
Director (Outside)	Fumiaki Furuya (Concurrently holds the position of Chairman, NIPPON SHUPPAN HANBAI INC.)
Director (Outside)	Kiyomi Saito (Concurrently holds the position of CEO, JBond Totan Securities Co., Ltd.)
Director (Outside)	Shin Yoshidome (Concurrently holds the position of Senior Adviser, Daiwa Institute of Research Business Innovation Ltd.)
Director (Outside)	Shinji Hattori (Concurrently holds the position of Chairman & Group CEO, Seiko Holdings Corporation)

2. Executive Officers (Excludes persons holding concurrent posts in addition to the above. 1. Directors)

Deputy President Executive Officer	Shoji Awakura	Executive Officer	Masanori Sato
Senior Managing Executive Officer	Kiyoshi Ido	Executive Officer	Tomoaki Nara
Senior Managing Executive Officer	Akira Anzai	Executive Officer	Yoshihiko Ido
Senior Managing Executive Officer	Kazuhide Kinugawa	Executive Officer	Shinji Ando
Senior Managing Executive Officer	Masaaki Horigane	Executive Officer	Hiroyuki Kutomi
Managing Executive Officer	Kiyotaka Fujimoto	Executive Officer	Nobuyasu Kato
Managing Executive Officer	Yoshito Horie	Executive Officer	Yasutaka Nishikawa
Managing Executive Officer	Mitsuhiko Uehira	Executive Officer	Osamu Kubo
Managing Executive Officer	Tetsuya Senda (Concurrently holds the position of Managing Executive Officer, Japan Post Holdings Co., Ltd.)	Executive Officer	Yasuaki Hironaka
Managing Executive Officer	Yasuhiro Sadayuki	Executive Officer	Hirofumi Udagawa
		Executive Officer	Hiroshi Nagaso
		Executive Officer	Hisao Nishikawa
		Executive Officer	Masato Kawagoe
		Executive Officer	Yasumi Suzukawa

3. Nomination Committee

Chairman	Taizo Nishimuro
Member	Masaharu Hino
Member	Shinji Hattori

5. Compensation Committee

Chairman	Taizo Nishimuro
Member	Fumiaki Furuya
Member	Shinji Hattori

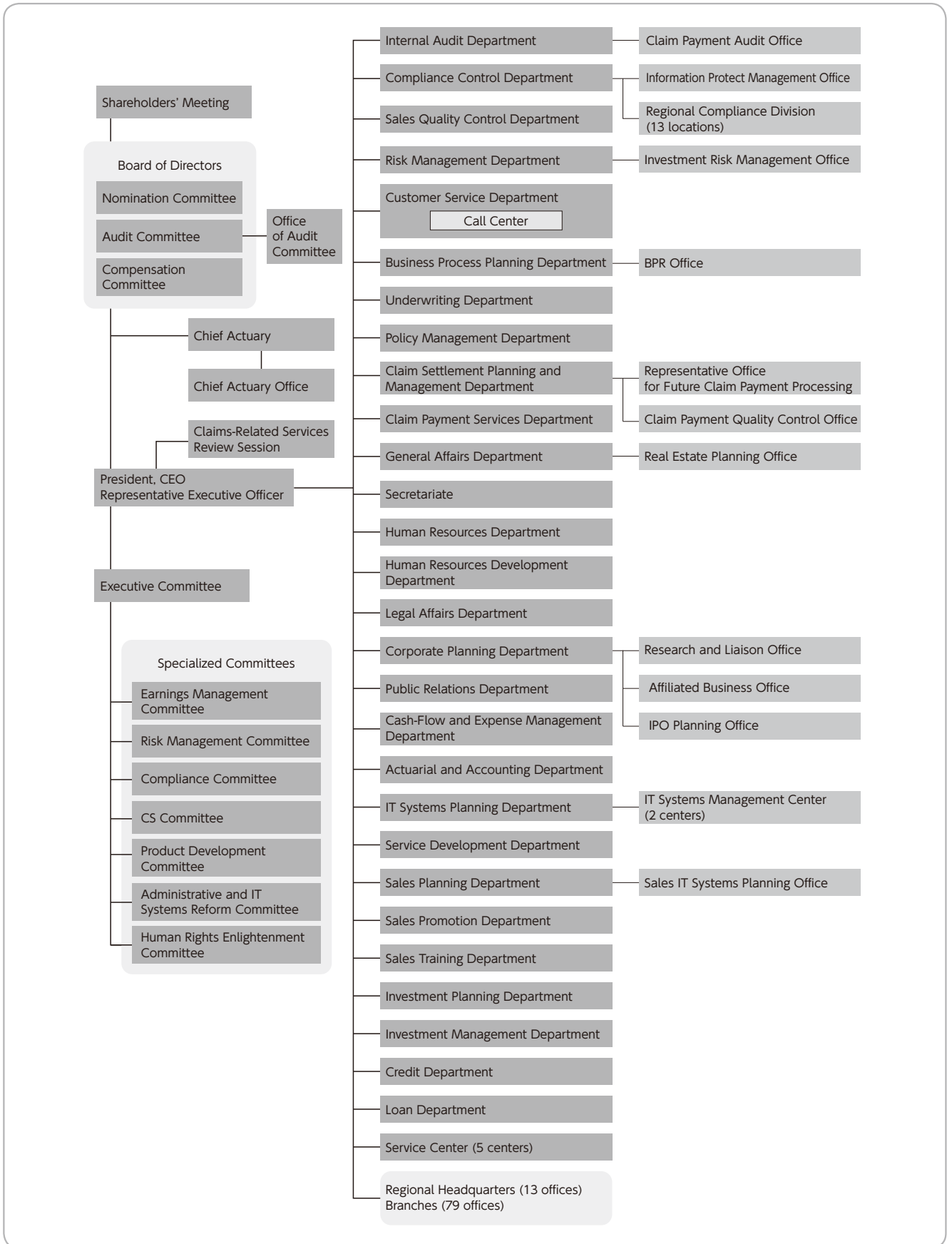
4. Audit Committee

Chairman	Masaharu Hino
Member	Kiyomi Saito
Member	Shin Yoshidome

6

Organization Chart

(As of July 1, 2014)



7

Principal Branches

(As of July 1, 2014)

Name of branch	Location	Telephone number
Sapporo	2-1, Odori Higashi, Chuo-ku, Sapporo, Hokkaido 060-0041	011-221-6375
Sendai	1-1-34, Ichibancho, Aoba-ku, Sendai, Miyagi 980-8797	022-267-7851
Saitama	3-1, Shintoshin, Chuo-ku, Saitama, Saitama 330-9797	048-600-2073
Yokohama	5-3, Nihon Odori, Naka-ku, Yokohama, Kanagawa 231-8799	045-212-3967
Tokyo	17-1, Toranomom 3-chome, Minato-ku, Tokyo 105-0001	03-6402-6515
Nagano	801, Kurita, Nagano, Nagano 380-8797	026-231-2348
Kanazawa	1-15, Kamitsutsumi-cho, Kanazawa, Ishikawa 920-8797	076-220-3178
Nagoya	2-5, Marunouchi 3-chome, Naka-ku, Nagoya, Aichi 469-8797	052-963-6357
Osaka	3-9, Kitahama Higashi, Chuo-ku, Osaka, Osaka 530-8797	06-6944-5516
Hiroshima	19-8, Higashi Hakushima-cho, Naka-ku, Hiroshima, Hiroshima 730-8797	082-224-5165
Matsuyama	8-5, Miyata-machi, Matsuyama, Ehime 790-8797	089-936-5274
Kumamoto	1-1, Joto-machi, Chuo-ku, Kumamoto, Kumamoto 860-8797	096-328-5419
Naha	3-3-8, Tsubogawa, Naha, Okinawa 900-8799	098-833-5518

In addition to the above, there are 66 other branches.

8

Outline of Subsidiary

(As of March 31, 2014)

Company name	Location	Paid-in capital (Millions of yen)	Line of business	Date of establishment	Japan Post Insurance Ownership	Ownership of voting shares
Japan Post Insurance System Solutions Co., Ltd.	Meguro-ku, Tokyo	60	Commissioned design, development, maintenance and operations of information systems	March 8, 1985	100.0%	100.0%