

Corporate Data

CONTENTS

1. Japan Post Group Management Philosophy, etc.	
1. Group Management Philosophy	90
2. Group Management Policy	90
3. Japan Post Group Charter of Corporate Conduct	90
2. Outline of Japan Post Holdings Co., Ltd.	
1. Company Outline	91
2. Information on Shares.....	91
3. Number of Employees	91
4. List of Directors, Executive Officers and Management Committees	92
5. Organization Chart	93
6. Principal Subsidiaries and Affiliates of Japan Post Holdings	94
7. Teishin Hospitals.....	95
8. Hotels	96
3. Outline of Japan Post Network Co., Ltd.	
1. Company Outline	98
2. Management Philosophy	98
3. Information on Shares.....	98
4. Number of Employees	98
5. List of Directors, Auditors and Executive Officers	99
6. Organization Chart	100
7. Names and Locations of Regional Offices.....	101
8. Post Offices by Prefecture	102
9. Outline of Subsidiaries	103
4. Outline of Japan Post Service Co., Ltd.	
1. Company Outline	104
2. Management Philosophy	104
3. Information on Shares.....	104
4. Number of Employees	105
5. List of Directors, Auditors and Executive Officers	105
6. Organization Chart	106
7. Names and Locations of Regional Offices.....	107
8. Number of Offices by Prefecture	107
9. Principal Subsidiaries	108
10. Number of Post Boxes	108
11. Outsourcing	108
12. Number of Locations Selling Postage Stamps and Revenue Stamps	109
13. Number of Vehicles Owned	109
5. Outline of Japan Post Bank Co., Ltd.	
1. Company Outline	110
2. Management Philosophy	110
3. Information on Shares.....	110
4. Number of Employees	110
5. List of Directors, Executive Officers and Management Committees	111
6. Organization Chart.....	112
7. Principal Business Locations	113
8. Japan Post Bank Offices by Prefecture	113
9. Number of ATMs by Prefecture	114
10. Outline of Affiliated Company	114
6. Outline of Japan Post Insurance Co., Ltd.	
1. Company Outline	115
2. Management Philosophy	115
3. Information on Shares.....	115
4. Number of Employees	116
5. List of Directors, Executive Officers and Management Committees	116
6. Organization Chart	117
7. Principal Branches (Regional Control Offices)	118
8. Outline of Subsidiary	118

1. Japan Post Group Management Philosophy, etc.

1 Group Management Philosophy

Stressing the security and confidence that Japan Post, as a public organization, has fostered, the Group, as a private corporation, will demonstrate creativity and efficiency to the greatest extent possible, meet customers' expectations, raise customer satisfaction and grow together with customers. The Group will also pursue managerial transparency on its own, observe rules and contribute to the development of society and the region.

2 Group Management Policy

1. We will duly consider our customers' viewpoints, exercise our creativity and provide through our nationwide network a selection of products and services that customers truly appreciate.
2. We will establish effective corporate governance and compliance programs, including internal audits and internal controls.
3. We will maintain the transparency of the Group's operations through the timely and proper disclosure of information, the appropriate use of intra-group transactions and other activities.
4. We will create opportunities for all employees, business partners and the community to grow and develop through mutual cooperation.

3 Japan Post Group Charter of Corporate Conduct

(1) Earn the trust of customers

- We earn the trust of customers by adopting their perspective and meeting their expectations.
- We protect and manage information strictly so that customers can use our services with peace of mind.
- We fulfill our responsibility to explain our operations by conducting highly transparent business operations and disclosing information in a fair manner.

(2) Observe ethical standards

- We continue to conduct business activities with sincerity by complying with laws, regulations, social standards and internal rules.
- We stand firmly against antisocial forces and organizations that threaten the order and safety of civil society.
- We maintain workplace discipline by clearly defining responsibilities and authority and fairly evaluating performance and results.

(3) Place priority on coexistence

- We actively promote environmental conservation and make a significant contribution to society through business activities.
- We aim for sustainable coexistence by placing importance on maintaining dialogues with diverse stakeholders.
- We respect human rights and provide safe and pleasant workplaces.

(4) Create value

- We provide valued and high-quality services that exceed customers' expectations.
- We create value consistently by pursuing greater operating efficiency.
- We play a role as individual employees to create corporate value by promoting mutual understanding and cooperation.

(5) Be a source of change

- We make improvements by responding swiftly to changes and emphasizing speed.
- We exercise our creativity from a broad viewpoint and lofty perspective.
- We aggressively take on the challenge of conducting global business activities.

2. Outline of Japan Post Holdings Co., Ltd.

1 Company Outline

Company name (in Japanese):	Nippon Yusei Kabushiki Kaisha
Company name:	JAPAN POST HOLDINGS Co., Ltd.
Head office location:	3-2, Kasumigaseki 1-chome, Chiyoda-ku, Tokyo 100-8798, Japan
Telephone:	03-3504-4411 (Japan Post Group main number)
Paid-in capital:	¥3,500 billion
Date of establishment:	January 23, 2006
Legal basis:	Established under the Japan Post Holdings Co., Ltd. Act (Law No. 98 of October 21, 2005)
Lines of business:	Management of Group companies

2 Information on Shares

1. Number of Shares

Authorized number of shares	600,000,000
Total shares issued	150,000,000
Number of shareholders as of the end of fiscal 2012	One

2. Shareholder

Minister of Finance	Condition of holdings	
	Shares owned	Percentage of total issued
	150,000,000	100%

3. Information on Rights to Purchase New Shares, etc.

None outstanding

3 Number of Employees

3,207* (as of March 31, 2012)

* Number of employees excludes employees seconded to other companies and includes employees seconded to Japan Post Holdings Co., Ltd. Excludes temporary employees.

(As of July 1, 2012)

1. Directors

Chairman (Outside)	Takashi Nishioka (Concurrently holds the positions of Senior Advisor of Mitsubishi Heavy Industries, Ltd., and Chairman of the Board of Mitsubishi Motors Corporation)
President & CEO (Representative Executive Officer)	Jiro Saito (Concurrently holds the positions of Director of Japan Post Network Co., Ltd., Director of Japan Post Service Co., Ltd., Director of Japan Post Bank Co., Ltd., and Director of Japan Post Insurance Co., Ltd.)
Executive Vice President (Representative Director).....	Atsuo Saka
Executive Vice President (Representative Director).....	Yoshiyuki Izawa (Concurrently holds the position of President & CEO of Japan Post Bank Co., Ltd.)
Executive Vice President (Representative Director).....	Toshinari Takai
Executive Vice President (Representative Director).....	Seiji Adachi
Executive Vice President (Representative Director).....	Toshio Nagashima
Director (Outside)	Hiromitsu Ishi (Concurrently holds the position of Professor Emeritus at Hitotsubashi University)
Director (Outside)	Hidekazu Inoue (Concurrently holds the position of Director of Japan Post Network Co., Ltd.; formerly held the position of President of Nippon Telegraph and Telephone East Corporation)
Director (Outside)	Taro Irimajiri (Concurrently holds the position of President & CEO of Irimajiri Group Inc.)
Director (Outside)	Tadashi Okamura (Concurrently holds the positions of Chairman of the Japan Chamber of Commerce and Industry and Advisor to the Board of Toshiba Corporation)
Director (Outside)	Hiroshi Okuda (Concurrently holds the position of Governor of Japan Bank for International Cooperation)
Director (Outside)	Goro Kamino (Concurrently holds the position of President of SALA Corporation)
Director (Outside)	Kiyohiko Koike (Concurrently holds the position of Mayor of Kamo City (Niigata Prefecture))
Director (Outside)	Koichi Sugiyama (Formerly held the position of Executive Vice President of Mitsubishi Heavy Industries, Ltd.)
Director (Outside)	Ayako Sono (Novelist)
Director (Outside)	Akio Harada (Attorney-at-law)
Director (Outside)	Shingo Matsuo (Concurrently holds the position of Honorary Advisor of Kyushu Electric Power Co., Inc.)
Director (Outside)	Takao Watanabe (Concurrently holds the positions of Chairman of Nishijin Textile Industrial Association and President of Watabun Co., Ltd.)

2. Executive Officers (Excludes persons with concurrent posts in the above 1. Directors)

Senior Managing Executive Officer (Concurrently holds the position of Senior Managing Executive Officer of Japan Post Network Co., Ltd.)	Toru Takahashi	Managing Executive Officer (Concurrently holds the position of Deputy President of Japan Post Insurance Co., Ltd.)	Toshihisa Minakata
Senior Managing Executive Officer	Hideharu Sasaki	Managing Executive Officer (Concurrently holds the position of Senior Managing Executive Officer of Japan Post Bank Co., Ltd.)	Susumu Tanaka
Senior Managing Executive Officer	Eisuke Fujimoto	Managing Executive Officer (Concurrently holds the position of Senior Executive Officer of Japan Post Service Co., Ltd.)	Junichiro Miyazaki
Senior Managing Executive Officer (Concurrently holds the position of Executive Vice President of Japan Post Service Co., Ltd.)	Yoshiro Nakajo	Executive Officer	Tetsuhiko Yoshizawa
Senior Managing Executive Officer (Concurrently holds the position of Executive Vice President of Japan Post Network Co., Ltd.)	Chikanori Saio	Executive Officer	Hisao Yamano
Managing Executive Officer	Masatoshi Shinoda	Executive Officer	Kimihiko Oku
Managing Executive Officer (Concurrently holds the position of Senior Executive Officer of Japan Post Service Co., Ltd.)	Takao Miwa	Executive Officer	Susumu Inoue (Concurrently holds the position of Executive Officer of Japan Post Network Co., Ltd.)
Managing Executive Officer	Kunio Tanigaki	Executive Officer	Noboru Ichikura
Managing Executive Officer (Concurrently holds the position of Senior Executive Officer of Japan Post Service Co., Ltd.)	Masayuki Nakayama	Executive Officer	Hidetaka Saito

3. Nomination Committee

Chairperson	Hiroshi Okuda
Member	Hidekazu Inoue
Member	Tadashi Okamura
Member	Jiro Saito
Member	Atsuo Saka

4. Audit Committee

Chairperson	Hiromitsu Ishi
Member	Hidekazu Inoue
Member	Koichi Sugiyama

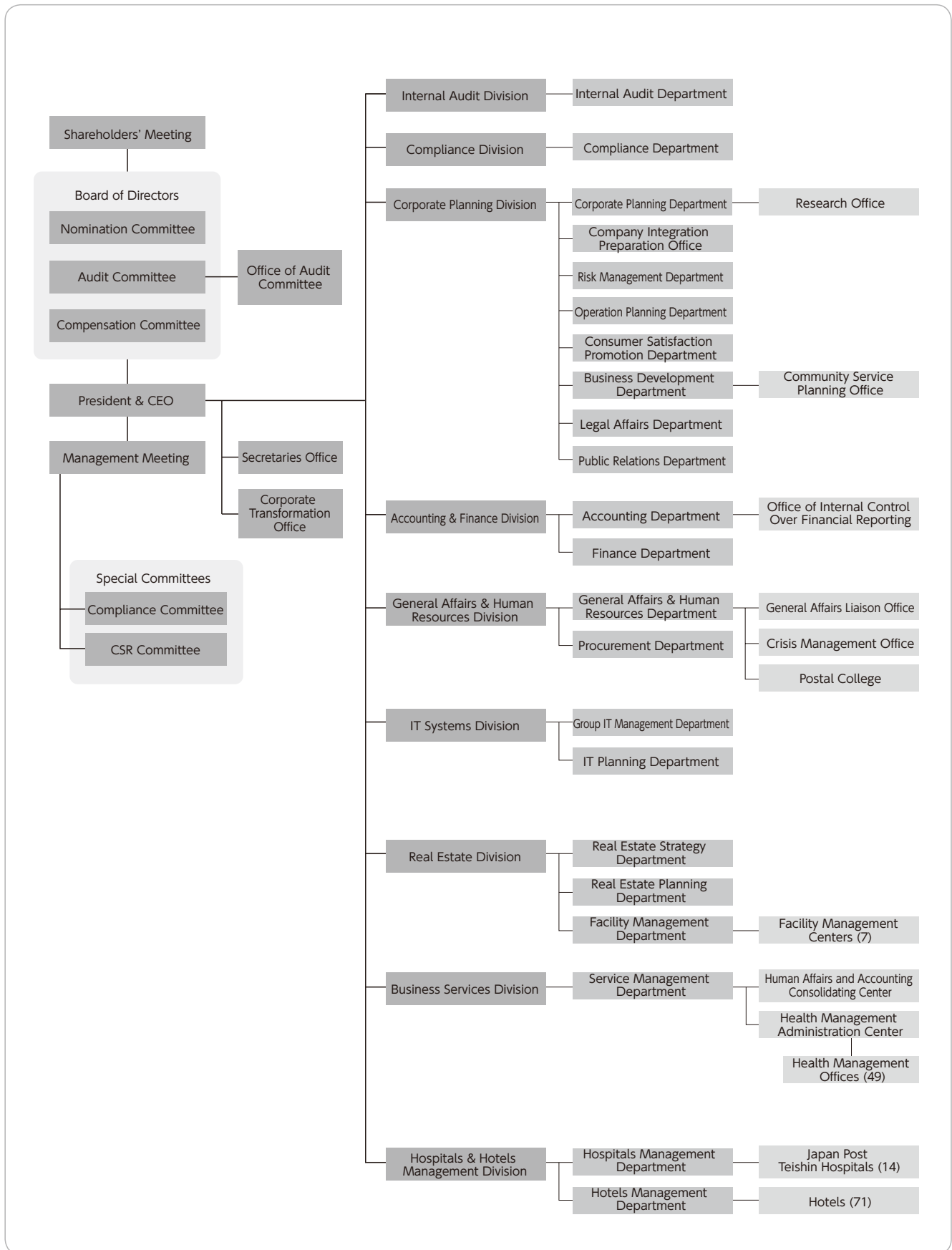
5. Compensation Committee

Chairperson	Hiroshi Okuda
Member	Tadashi Okamura
Member	Takashi Nishioka
Member	Jiro Saito
Member	Atsuo Saka

5

Organization Chart

(As of July 1, 2012)



Corporate Data

Financial Data

Others

6

Principal Subsidiaries and Affiliates of Japan Post Holdings

(As of March 31, 2012)

Affiliation	Company name	Location	Issued capital (millions)	Main business	Date of establishment	Percentage ownership of voting rights
Consolidated subsidiaries	Japan Post Network Co., Ltd.	Chiyoda-ku, Tokyo	¥100,000	Post office counter-related business	October 1, 2007	100.0% (0.0%)
	Japan Post Service Co., Ltd.	Chiyoda-ku, Tokyo	¥100,000	Postal and parcel delivery operations	October 1, 2007	100.0% (0.0%)
	Japan Post Bank Co., Ltd.	Chiyoda-ku, Tokyo	¥3,500,000	Banking business	September 1, 2006	100.0% (0.0%)
	Japan Post Insurance Co., Ltd.	Chiyoda-ku, Tokyo	¥500,000	Life insurance business	September 1, 2006	100.0% (0.0%)
	Japan Post Staff Co., Ltd.	Chuo-ku, Tokyo	¥140	Contract staffing service	July 3, 2007	100.0% (0.0%)
	Yusei Challenged Co., Ltd.	Setagaya-ku, Tokyo	¥5	Office cleaning, others	November 20, 2007	100.0% (0.0%)
	Japan Post Hotel Service Co., Ltd.	Saitama-shi, Saitama	¥39	Hotel management operations	December 26, 1996	100.0% (0.0%)
	Japan Post Information Technology Co., Ltd.	Minato-ku, Tokyo	¥30	Communication network maintenance and management	January 30, 1987	100.0% (0.0%)
	Post Office Business Support Co., Ltd.*	Koto-ku, Tokyo	¥100	Merchandise business, contracting business for merchandise operations	September 11, 2007	100.0% (100.0%)
	Japan Post Building Management Co., Ltd.	Minato-ku, Tokyo	¥150	Building operation management	April 1, 2011	100.0% (100.0%)
	JP Logi Service Co., Ltd.	Chuo-ku, Osaka	¥34	Preparation and posting of postal items, parcels and mail items	October 15, 1968	67.6% (67.6%)
	JP Biz Mail Co., Ltd.	Adachi-ku, Tokyo	¥100	Preparation and posting of postal items	February 1, 2006	58.5% (58.5%)
	JP Media Direct Co., Ltd.	Minato-ku, Tokyo	¥300	Product development of direct media	February 29, 2008	51.0% (51.0%)
	Japan Post Transport Co., Ltd.	Minato-ku, Tokyo	¥18,250	Truck cargo transportation	November 30, 2007	100.0% (100.0%)
	JAPAN POST SANKYU GLOBAL LOGISTICS Co., Ltd.	Chuo-ku, Tokyo	¥300	International air freight forwarding	July 1, 2008	60.0% (60.0%)
Japan Post Insurance System Solutions Co., Ltd.	Shibuya-ku, Tokyo	¥60	Commissioned design, development, maintenance and operation of information systems for the life insurance business and others	March 8, 1985	100.0% (100.0%)	
Affiliated companies accounted for under the equity method	SDP Center Co., Ltd.	Chuo-ku, Tokyo	¥2,000	Bank agency operations	May 28, 1980	45.0% (45.0%)

Note: The figures in parentheses in the column showing percentage ownership of voting rights indicate the percentage of indirect ownership through consolidated subsidiaries.

* Post Office Business Support Co., Ltd. changed its company name to Japan Post Network Trading Service Co., Ltd. on April 1, 2012.

7

Teishin Hospitals

Name of facility	Location	Telephone number
Sapporo Teishin Hospital	1-5-1, Kawazoe 14-jo, Minami-ku, Sapporo, Hokkaido 005-8798	011-571-5103
Sendai Teishin Hospital	5-1, Chuo 4-chome, Aoba-ku, Sendai, Miyagi 980-8798	022-268-3150
Yokohama Teishin Hospital	13-10, Nishi Kanagawa 1-chome, Kanagawa-ku, Yokohama, Kanagawa 221-8798	045-321-4782
Tokyo Teishin Hospital	14-23, Fujimi 2-chome, Chiyoda-ku, Tokyo 102-8798	03-5214-7111
Niigata Teishin Hospital	2-8, Yachiyo 2-chome, Chuo-ku, Niigata, Niigata 950-8798	025-244-4700
Toyama Teishin Hospital	2-29, Kashima-machi 2-chome, Toyama, Toyama 930-8798	076-423-7727
Nagoya Teishin Hospital	2-5, Izumi 2-chome, Higashi-ku, Nagoya, Aichi 461-8798	052-932-7151
Kyoto Teishin Hospital	109, Nishi Rokkakuchō, Shinmachi Nishiiru, Rokkakutori, Nakagyo-ku, Kyoto, Kyoto 604-8798	075-241-7167
Osaka Kita Teishin Hospital	1-6, Nakazaki 1-chome, Kita-ku, Osaka, Osaka 530-8798	06-6361-2071
Kobe Teishin Hospital	2-43, Kami-tsutsui Dori 6-chome, Chuo-ku, Kobe, Hyogo 651-8798	078-232-7519
Hiroshima Teishin Hospital	19-16, Higashi Hakushima-cho, Naka-ku, Hiroshima, Hiroshima 730-8798	082-224-5350
Tokushima Teishin Hospital	19-2, Iga-cho 3-chome, Tokushima, Tokushima 770-8798	088-623-8611
Fukuoka Teishin Hospital	6-11, Yakuin 2-chome, Chuo-ku, Fukuoka, Fukuoka 810-8798	092-741-0300
Kagoshima Teishin Hospital	12-1, Shimo Ishiki 1-chome, Kagoshima, Kagoshima 890-8798	099-223-6013

(As of July 1, 2012)

1. Kanpo no Yado Inns

Number	Name of facility	Location	Telephone number	Number of rooms	Notes
1	Otaru	2-670, Asarigawa Onsen, Otaru, Hokkaido 047-0192	0134-54-8511	21	Kazeru Otaru Annex
2	Tokachigawa	9-1, Kita, Tokachigawa Onsen, Otofuke-cho, Kato-gun, Hokkaido 080-0262	0155-46-2141	43	
3	Ichinoseki	147-5, Horyu, Genbi-cho, Ichinoseki, Iwate 021-0101	0191-29-2131	55	
4	Yokote	1-20, Shiotsuke, Mutsunari, Yokote, Akita 013-0008	0182-32-5055	42	
5	Matsushima	89-53, Minami-Akasaki, Nobiru, Higashi-Matsushima, Miyagi 981-0411	—	54	Operations currently suspended*2
6	Sakata	17-26, Iimoriyama 3-chome, Sakata, Yamagata 998-8588	0234-31-4126	39	
7	Koriyama	3-198, Atami, Atami-machi, Koriyama, Fukushima 963-1380	024-984-3511	36	
8	Iwaki	60, Shibazaki, Tairafujima, Iwaki, Fukushima 970-0103	0246-39-2670	59	
9	Oarai	7986-2, Isohama-cho, Oarai-machi, Higashi-Ibaraki-gun, Ibaraki 311-1301	029-267-3191	52	
10	Itako	1830-1, Mizuhara, Itako, Ibaraki 311-2404	0299-67-5611	58	
11	Shiobara	1256, Shiobara, Nasushiobara, Tochigi 329-2921	0287-32-2845	39	
12	Tochigi Kitsuregawa Onsen	5296-1, Kitsuregawa, Sakura, Tochigi 329-1412	028-686-2822	53	
13	Kusatsu	464-1051, Kusatsu, Kusatsu-machi, Agatsuma-gun, Gunma 377-1794	0279-88-5761	48	
14	Isobe	22, Gobara, Annaka, Gunma 379-0135	027-385-6321	51	
15	Yorii	2267, Sueno, Yorii-machi, Osato-gun, Saitama 369-1205	048-581-1165	51	
16	Kamogawa	1137, Nishi-cho, Kamogawa, Chiba 296-0043	04-7092-1231	101	
17	Asahi	2280-1, Nittama, Asahi, Chiba 289-2525	0479-63-2161	61	
18	Katsuura	2183-5, Ubara, Katsuura, Chiba 299-5243	0470-76-3011	50	
19	Ome	668-2, Komaki-cho 3-chome, Ome, Tokyo 198-0053	0428-23-1171	52	
20	Hakone	159, Motohakone, Hakone-machi, Ashigarashimo-gun, Kanagawa 250-0522	0460-84-9126	29	
21	Isawa	348-1, Matsumoto, Isawa-cho, Fuefuki, Yamanashi 406-0021	055-262-3755	54	
22	Kashiwazaki	2-15, Kotobuki-cho, Kashiwazaki, Niigata 945-0846	—	—	Temporarily closed
23	Suwa	15-16, Owa 2-chome, Suwa, Nagano 392-0001	0266-52-1551	36	
24	Atami (Main Building)	12-3, Minaguchi-cho 2-chome, Atami, Shizuoka 413-0016	0557-83-6111	159	
	Atami (Annex)	13-77, Minaguchi-cho 2-chome, Atami, Shizuoka 413-0016	0557-83-6111	45	
25	Shuzenji	1257-4, Kumasaka, Izu, Shizuoka 410-2411	0558-72-3151	32	
26	Izukogen	1104-5, Yawatano, Ito, Shizuoka 413-0232	0557-51-4400	59	
27	Toyama	5691-2, Hane, Fuchu-machi, Toyama, Toyama 939-2694	076-469-3135	40	
28	Yamashiro	32-1, Onsen-dori, Yamashiro Onsen, Kaga, Ishikawa 922-0254	0761-77-1600	46	
29	Fukui	43-17, Fuchi-machi, Fukui, Fukui 918-8026	0776-36-5793	33	
30	Yaizu	1375-2, Hamatome, Yaizu, Shizuoka 425-8533	054-627-0661	40	
31	Hamanako-Mikkabi	2977-2, Tsuzuki, Mikkabi-cho, Kita-ku, Hamamatsu, Shizuoka 431-1496	053-526-1201	41	
32	Sangané	1-221, Nyukaizan, Higashihazu-cho, Nishio, Aichi 444-0701	0563-62-2650	32	
33	Chita-Mihama	39, Suhara, Okuda, Mihama-cho, Chita-gun, Aichi 470-3233	0569-87-1511	42	
34	Ena	2709, Oi-cho, Ena, Gifu 509-7201	0573-26-4600	54	
35	Gifu-Hashima	1041, Umaminami, Kuwabara-cho, Hashima, Gifu 501-6323	058-398-2631	40	
36	Toba	1200-7, Arashima-cho, Toba, Mie 517-0021	0599-25-4101	58	
37	Kumano	1020-7, Ido-cho, Kumano, Mie 519-4324	0597-89-4411	27	
38	Hikone	3759, Matsubara-cho, Hikone, Shiga 522-0002	0749-22-8090	41	
39	Maizuru	224-5, Ueyasu, Maizuru, Kyoto 624-0912	—	—	Temporarily closed
40	Tondabayashi	880-1, Ryusen, Tondabayashi, Osaka 584-0053	0721-33-0700	43	

Number	Name of facility	Location	Telephone number	Number of rooms	Notes
41	Yamatoheguri	16-1, Kamisho 2-chome, Heguri-cho, Ikoma-gun, Nara 636-0905	0745-45-0351	34	
42	Nara	9-1, Nijo-cho 3-chome, Nara, Nara 630-8002	0742-33-2351	40	
43	Shirahama	1688-2, Shirahama-cho, Nishimuro-gun, Wakayama 649-2211	0739-42-2980	31	
44	Kii-Tanabe	24-1, Mera, Tanabe, Wakayama 646-8501	0739-24-2900	52	
45	Arima	1617-1, Arima-cho, Kita-ku, Kobe, Hyogo 651-1401	078-904-0951	53	
46	Ako	883-1, Misaki, Ako, Hyogo 678-0215	0791-43-7501	50	
47	Awajishima	824, Toshima, Awaji, Hyogo 656-1711	0799-82-1073	40	
48	Kaike	1-7, Kaikeshinden 3-chome, Yonago, Tottori 683-0002	0859-33-4421	35	
49	Mimasaka Yunogo	674-7, Nakayama, Mimasaka, Okayama 707-0061	0868-72-5551	35	
50	Takehara	442-2, Nishino-cho, Takehara, Hiroshima 725-0002	0846-29-0141	40	
51	Hikari	31-1, Murozumi-Higashinosho, Hikari, Yamaguchi 743-0005	0833-78-1515	40	
52	Yuda	1-42, Kanda-cho, Yamaguchi, Yamaguchi 753-0064	083-922-5226	40	
53	Kanonji	1101-4, Ikenoshiri-cho, Kanonji, Kagawa 768-0031	0875-27-6161	55	
54	Sakaide	2048-91, Takaya-cho, Sakaide, Kagawa 762-0017	0877-47-0531	41	
55	Tokushima	3-70, Nakatsuyama, Hachiman-cho, Tokushima, Tokushima 770-8071	088-625-1255	46	
56	Dogo	3-1, Mizonobe-machi, Matsuyama, Ehime 791-0101	089-977-0460	54	
57	Ino	1569, Hakawa, Ino-cho, Agawa-gun, Kochi 781-2128	088-892-1580	52	
58	Kitakyushu	2829, Arige, Wakamatsu-ku, Kitakyushu, Fukuoka 808-0123	093-741-1335	50	
59	Yanagawa	10-1, Yashiro-machi, Yanagawa, Fukuoka 832-0057	0944-72-6295	40	
60	Shimabara	8362-3, Hakusan-machi, Shimabara, Nagasaki 855-0824	—	—	Temporarily closed
61	Beppu	457, Tsurumi, Beppu, Oita 874-0844	0977-66-1271	49	
62	Hita	685-6, Nakanoshima-machi, Hita, Oita 877-0074	0973-24-0811	53	
63	Yamaga	2450, Shijiki, Yamaga, Kumamoto 861-0542	0968-43-5121	28	
64	Aso	5936, Miyaji, Ichinomiya-machi, Aso, Kumamoto 869-2612	0967-22-1122	66	
65	Nichinan	2228-1, Hoshikura, Nichinan, Miyazaki 889-2533	0987-22-5171	46	
66	Recreation Center in Naha	9-15, Minato-machi 2-chome, Naha, Okinawa 900-0001	098-862-4740	76	

2. Kanpo no Sato Inns

Number	Name of facility	Location	Telephone number	Number of rooms	Notes
67	Hakusan-Oguchi	43-3, U, Seto, Hakusan, Ishikawa 920-2331	076-256-8080	43	
68	Shobara	281-1, Shinjo-cho, Shobara, Hiroshima 727-0004	0824-73-1800	62	
69	Usa	1571-1, Kawabe, Usa, Oita 879-0452	0978-37-2288	32	

3. Rafre Saitama and Other Facilities

Number	Name of facility	Location	Telephone number	Number of rooms	Notes
70	Rafre Saitama	3-2, Shintoshin, Chuo-ku, Saitama, Saitama 330-0081	048-601-1111	187	
71	U-Port Recreation Center in Setagaya	17-1, Kamata 2-chome, Setagaya, Tokyo 157-0077	03-3709-0161	—	

Notes 1: For more details, contact the hotels directly or call the customer service center of *Kanpo no Yado* inns at 0120-715294 (weekdays: 9:30 to 17:30).

2: The suspension of operations in Matsushima is due to the impact of the Great East Japan Earthquake.

3: Each accommodation facility has formed a disaster agreement beforehand with local municipalities to provide evacuation areas, bathing facilities and food in accordance with requests from these municipalities (except Koriyama).

3. Outline of Japan Post Network Co., Ltd.

1 Company Outline

Company name (in Japanese):	Yubinkyoku Kabushiki Kaisha
Company name:	JAPAN POST NETWORK Co., Ltd.
Head office location:	3-2, Kasumigaseki 1-chome, Chiyoda-ku, Tokyo 100-8798, Japan
Telephone:	03-3504-4411 (Japan Post Group main number)
Paid-in capital:	¥100 billion
Date of establishment:	October 1, 2007
Legal basis:	Established under the Japan Post Network Act (Law No. 100 of October 21, 2005)
Lines of business:	Postal counter operations for regular mail, parcels and other items; sales of revenue stamps; bank agency services; intermediary services for financial products; solicitation of life and non-life insurance; real estate business; merchandise sales; and operations consigned by local government entities

2 Management Philosophy

Management Philosophy

Japan Post Network will offer products and services transparently through readily available post office networks, aiming to contribute to "helping customers lead a better and more comfortable life at present and in the future" and realize excellent management so that customers and consignors will use Japan Post Network's services over the long term.

1. We will supply products and services that precisely match customers' needs from the perspective of each one of them.
2. We will create an even better infrastructure for our customers' lives, constantly upgrading the post office network's capabilities by evolving with social and regional changes.
3. We will fulfill our responsibilities as a corporate citizen by establishing corporate governance systems and strictly implementing compliance.
4. We will encourage all employees to refine their skills and aim for higher goals while interacting with society and the residents of the communities we serve.

3 Information on Shares

1. Number of Shares

Total shares issued	4,000,000
---------------------	-----------

2. Shareholder

Japan Post Holdings	Condition of holdings	
	Shares owned	Percentage of total issued
	4,000,000	100%

4 Number of Employees

108,973* (as of March 31, 2012)

* Number of employees excludes employees seconded to other companies and includes employees seconded to Japan Post Network Co., Ltd. Excludes temporary employees.

(As of July 1, 2012)

1. Directors

Chairman & CEO.....	Koji Furukawa
President.....	Akira Nagatomi
Executive Vice President.....	Chikanori Saio (Concurrently holds the position of Senior Managing Executive Officer of Japan Post Holdings Co., Ltd.)
Director (Outside).....	Hidekazu Inoue (Formerly held the position of President of Nippon Telegraph and Telephone East Corporation; concurrently holds the position of Director of Japan Post Holdings Co., Ltd.)
Director (Outside).....	Seisuke Ueshima (Formerly held the position of Chairman of Yamaha Corporation)
Director (Outside).....	Jiro Saito (Concurrently holds the position of Representative Executive Officer and President & CEO of Japan Post Holdings Co., Ltd.)

2. Auditors

Haruki Iinuma
Kiyoshi Nishimura
Yoshikazu Yamaguchi
Satoru Ito

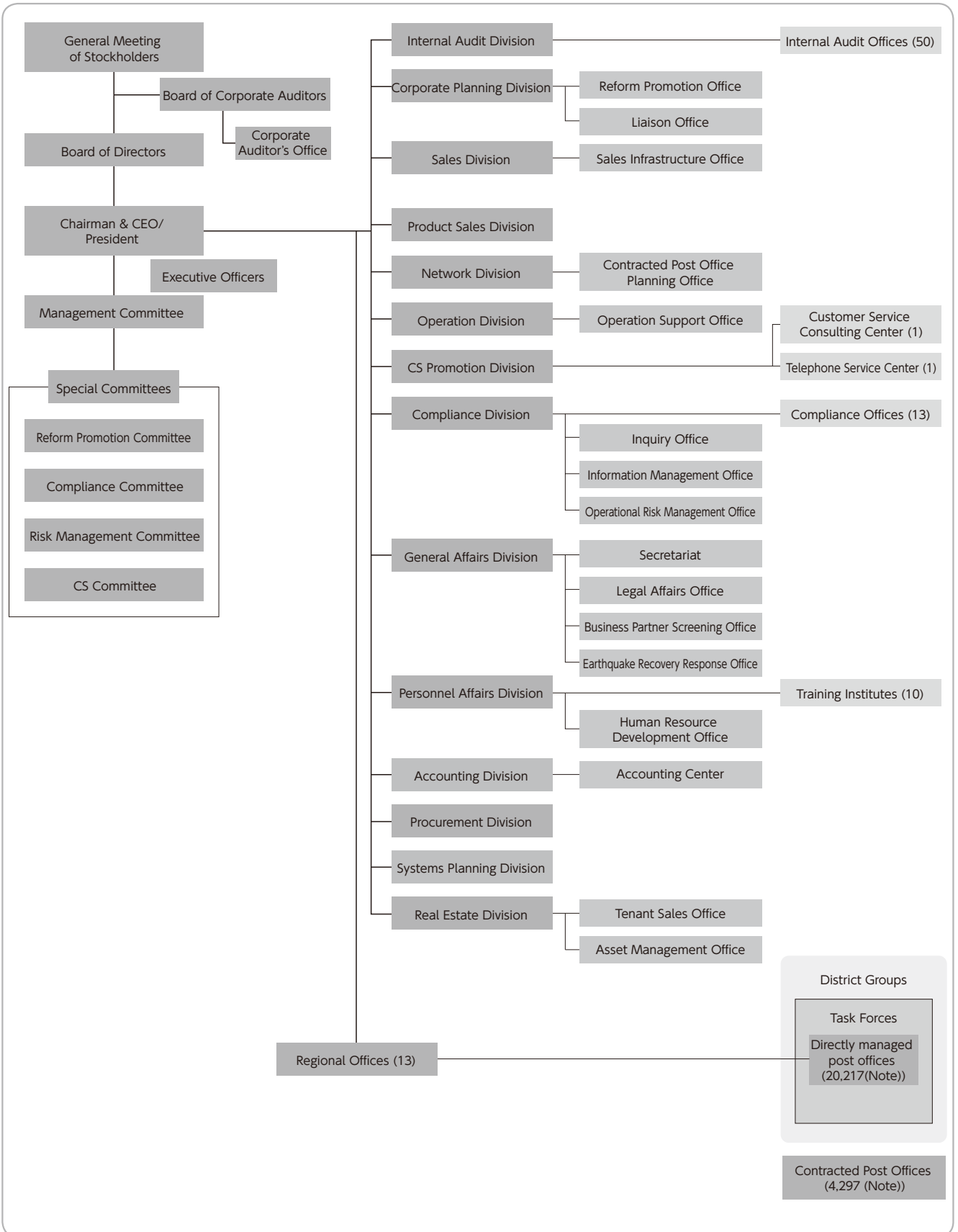
3. Executive Officers

Vice President	Nobuyuki Hidaka	Managing Executive Officer	Tameyasu Tsukada
Senior Managing Executive Officer (Concurrently holds the position of Senior Managing Executive Officer of Japan Post Holdings Co., Ltd.)	Toru Takahashi	Managing Executive Officer	Shin Ueda
Managing Executive Officer	Manabu Kawamura	Managing Executive Officer	Kiyoshi Kobayashi
Managing Executive Officer	Kinzo Nakazawa	Executive Officer	Atsuko Onodera
Managing Executive Officer	Toshihiro Tsuboi	Executive Officer	Yoshihiko Ota
Managing Executive Officer	Kazuya Yamaguchi	Executive Officer	Koji Wada
Managing Executive Officer (Concurrently holds the position of Managing Executive Officer of Japan Post Bank Co., Ltd.)	Satoshi Hoshino	Executive Officer	Yasunao Taketomi
Managing Executive Officer (Concurrently holds the position of Managing Executive Officer of Japan Post Bank Co., Ltd.)	Kikuo Kushibiki	Executive Officer (Concurrently holds the position of Executive Officer of Japan Post Holdings Co., Ltd.)	Hisaharu Nakajima
Managing Executive Officer	Yoshikazu Kurita	Executive Officer	Susumu Inoue
		Executive Officer	Tomoko Samura
		Executive Officer (Concurrently holds the position of Executive Officer of Japan Post Service Co., Ltd.)	Shuzo Inoue

6

Organization Chart

(As of July 1, 2012)



Note: The number of directly managed post offices and contracted post offices is as of March 31, 2012.

7

Names and Locations of Regional Offices

(As of July 1, 2012)

Name of regional office	Location
Hokkaido	4-3, Kita Nijo Nishi, Chuo-ku, Sapporo, Hokkaido 060-8797
Tohoku	1-34, Ichiban-cho 1-chome, Aoba-ku, Sendai, Miyagi 980-8797
Kanto	3-1, Shintoshin, Chuo-ku, Saitama, Saitama 330-9797
Tokyo	6-19, Azabudai 1-chome, Minato-ku, Tokyo 106-8797
Minami Kanto	1-1, Sakuragi-cho, Naka-ku, Yokohama, Kanagawa 231-0062
Shinetsu	801, Kurita, Nagano, Nagano 380-8797
Hokuriku	1-1, Owari-cho 1-chome, Kanazawa, Ishikawa 920-8797
Tokai	2-5, Marunouchi 3-chome, Naka-ku, Nagoya, Aichi 469-8797
Kinki	3-9, Kitahama Higashi, Chuo-ku, Osaka, Osaka 530-8797
Chugoku	19-8, Higashi Hakushima-cho, Naka-ku, Hiroshima, Hiroshima 730-8797
Shikoku	8-5, Miyata-cho, Matsuyama, Ehime 790-8797
Kyushu	1-1, Joto-machi, Chuo-ku, Kumamoto, Kumamoto 860-8797
Okinawa	26-29, Higashi-machi, Naha, Okinawa 900-8797

8

Post Offices by Prefecture

(As of March 31, 2012)

Prefecture	Post offices in service				Post offices out of service				Grand total
	Directly managed post offices		Contracted post offices	Total	Directly managed post offices		Contracted post offices	Total	
	Regular post offices	Post office branches			Regular post offices	Post office branches			
Hokkaido	1,215	0	283	1,498	0	0	17	17	1,515
Aomori	267	0	94	361	0	0	1	1	362
Iwate	297	0	107	404	11	0	17	28	432
Miyagi	344	0	81	425	18	0	12	30	455
Akita	273	0	127	400	0	0	1	1	401
Yamagata	289	0	106	395	0	0	3	3	398
Fukushima	408	0	106	514	24	0	10	34	548
Ibaraki	466	0	53	519	0	0	3	3	522
Tochigi	311	0	45	356	0	0	2	2	358
Gunma	302	0	38	340	0	0	0	0	340
Saitama	623	0	19	642	0	0	0	0	642
Chiba	688	0	33	721	0	0	1	1	722
Kanagawa	750	0	14	764	0	0	1	1	765
Yamanashi	201	0	58	259	0	0	8	8	267
Tokyo	1,491	4	7	1,502	9	0	0	9	1,511
Niigata	535	2	140	677	0	0	7	7	684
Nagano	445	0	202	647	0	0	13	13	660
Toyama	212	0	78	290	0	0	1	1	291
Ishikawa	253	1	70	324	1	0	2	3	327
Fukui	210	0	33	243	0	0	0	0	243
Gifu	355	1	91	447	0	0	11	11	458
Shizuoka	484	0	95	579	0	0	24	24	603
Aichi	835	5	81	921	0	0	13	13	934
Mie	372	0	86	458	0	0	9	9	467
Shiga	229	0	30	259	0	0	2	2	261
Kyoto	441	1	34	476	1	0	0	1	477
Osaka	1,085	5	31	1,121	0	0	0	0	1,121
Hyogo	840	2	121	963	0	0	2	2	965
Nara	241	0	79	320	0	0	3	3	323
Wakayama	263	0	54	317	0	0	0	0	317
Tottori	147	0	95	242	0	0	5	5	247
Shimane	257	0	117	374	0	0	5	5	379
Okayama	418	2	105	525	0	0	9	9	534
Hiroshima	583	1	115	699	0	0	6	6	705

Prefecture	Post offices in service				Post offices out of service				Grand total
	Directly managed post offices		Contracted post offices	Total	Directly managed post offices		Contracted post offices	Total	
	Regular post offices	Post office branches			Regular post offices	Post office branches			
Yamaguchi	354	1	61	416	0	0	4	4	420
Tokushima	203	0	30	233	0	0	6	6	239
Kagawa	189	0	29	218	0	0	9	9	227
Ehime	316	0	80	396	0	0	3	3	399
Kochi	229	0	91	320	0	0	3	3	323
Fukuoka	715	0	94	809	0	0	3	3	812
Saga	166	0	41	207	0	0	0	0	207
Nagasaki	311	0	136	447	0	0	2	2	449
Kumamoto	391	0	177	568	0	0	1	1	569
Oita	308	0	92	400	0	0	2	2	402
Miyazaki	196	0	112	308	0	0	2	2	310
Kagoshima	436	2	278	716	0	0	5	5	721
Okinawa	180	2	20	202	0	0	0	0	202
Nationwide total	20,124	29 (Note 1)	4,069	24,222	64	0	228 (Note 2)	292 (Note 3)	24,514

* Contracted post offices operate under consignment contracts.

"Post offices out of service" are post offices for which customers have been informed of a temporary closure and postal counter operations have been ceased.

Note 1: Of these 29 post offices, one post office branch was provisionally established as an emergency measure for contracted post offices temporarily closed due to reasons related to the contractees.

Note 2: Services in areas where contracted post offices have been closed are as follows.

Number of instances where services are provided by personnel dispatched to the location	Number of instances where services are provided by 2 mobile post offices
52	3

Of the mobile post offices, one has been dispatched to the disaster regions and therefore its service has been temporarily suspended.

Note 3: Post offices out of service are as follows.

	Closed due to the Great East Japan Earthquake	Closed for reasons other than the Great East Japan Earthquake	Total
Directly managed post offices	53	11	64
Contracted post offices	29	199	228

9

Outline of Subsidiaries

(As of March 31, 2012)

Company name	Location	Paid-in capital (Millions of yen)	Line of business	Date of establishment	Japan Post Network ownership	Ownership of voting shares
Post Office Business Support Co., Ltd. (Note)	Koto-ku, Tokyo	¥ 100	Merchandise business, contacting business for merchandise operations	September 11, 2007	100.0%	100.0%
Japan Post Building Management Co., Ltd.	Minato-ku, Tokyo	¥ 150	Property management for commercial buildings	April 1, 2011	100.0%	100.0%

* Note: Company name changed to Japan Post Network Trading Service Co., Ltd. on April 1, 2012.

4. Outline of Japan Post Service Co., Ltd.

1 Company Outline

Company name (in Japanese):	Yubin Jigyo Kabushiki Kaisha
Company name:	JAPAN POST SERVICE Co., Ltd.
Head office location:	3-2, Kasumigaseki 1-chome, Chiyoda-ku, Tokyo 100-8798, Japan
Telephone:	03-3504-4411 (Japan Post Group main number)
Paid-in capital:	¥100 billion
Date of establishment:	October 1, 2007
Legal basis:	Established under the Japan Post Service Act (Law No. 99 of October 21, 2005)
Lines of business:	Postal service business, domestic distribution and delivery business, international cargo transport and agency services for air cargo business, logistics business, etc.

2 Management Philosophy

Management Philosophy

While maintaining universal services for postal businesses, Japan Post Service will create a "network that conscientiously connects people, businesses, and society" by providing services that enable the public to enjoy secure, safe, certain and speedy communications and the benefit of logistics functions.

1. We will continue to provide universal postal service through more efficient business operations.
2. We will expand and upgrade logistics services in Japan and overseas by making extensive use of our resources with the aim of meeting customers' diversifying needs.
3. We will provide services that deliver true customer satisfaction, continually improving service quality and developing new products and service offerings, based on the perspective of our customers.
4. We will maintain effective corporate internal audits and internal controls and conduct a strict compliance program. We will appropriately disclose information to ensure the transparency of our business activities.
5. We will create opportunities for customers, employees and the general public to lead vibrant and enjoyable lives.

3 Information on Shares

1. Number of Shares

Total shares issued	4,000,000
---------------------	-----------

2. Shareholder

Japan Post Holdings	Condition of holdings	
	Shares owned	Percentage of total issued
	4,000,000	100%

4 Number of Employees

98,588* (as of March 31, 2012)

* Number of employees excludes employees seconded to other companies and includes employees seconded to Japan Post Service Co., Ltd. Excludes temporary employees.

5 List of Directors, Auditors and Executive Officers

(As of July 1, 2012)

1. Directors

President and CEO.....	Shinichi Nabekura
Executive Vice President.....	Yoshiro Nakajo (Concurrently holds the position of Senior Managing Executive Officer at Japan Post Holdings Co., Ltd.)
Executive Vice President.....	Toshiro Ito
Director (Outside)	Jiro Saito (Concurrently holds the position of Representative Executive Officer and President & CEO of Japan Post Holdings Co., Ltd.)
Director (Outside)	Masafumi Yokota (Concurrently holds the position of Senior Executive Officer at Nuclear Damage Liability Facilitation Fund)

2. Auditors

Takao Ito
Hitoshi Shirakawa
Yoshio Haibara

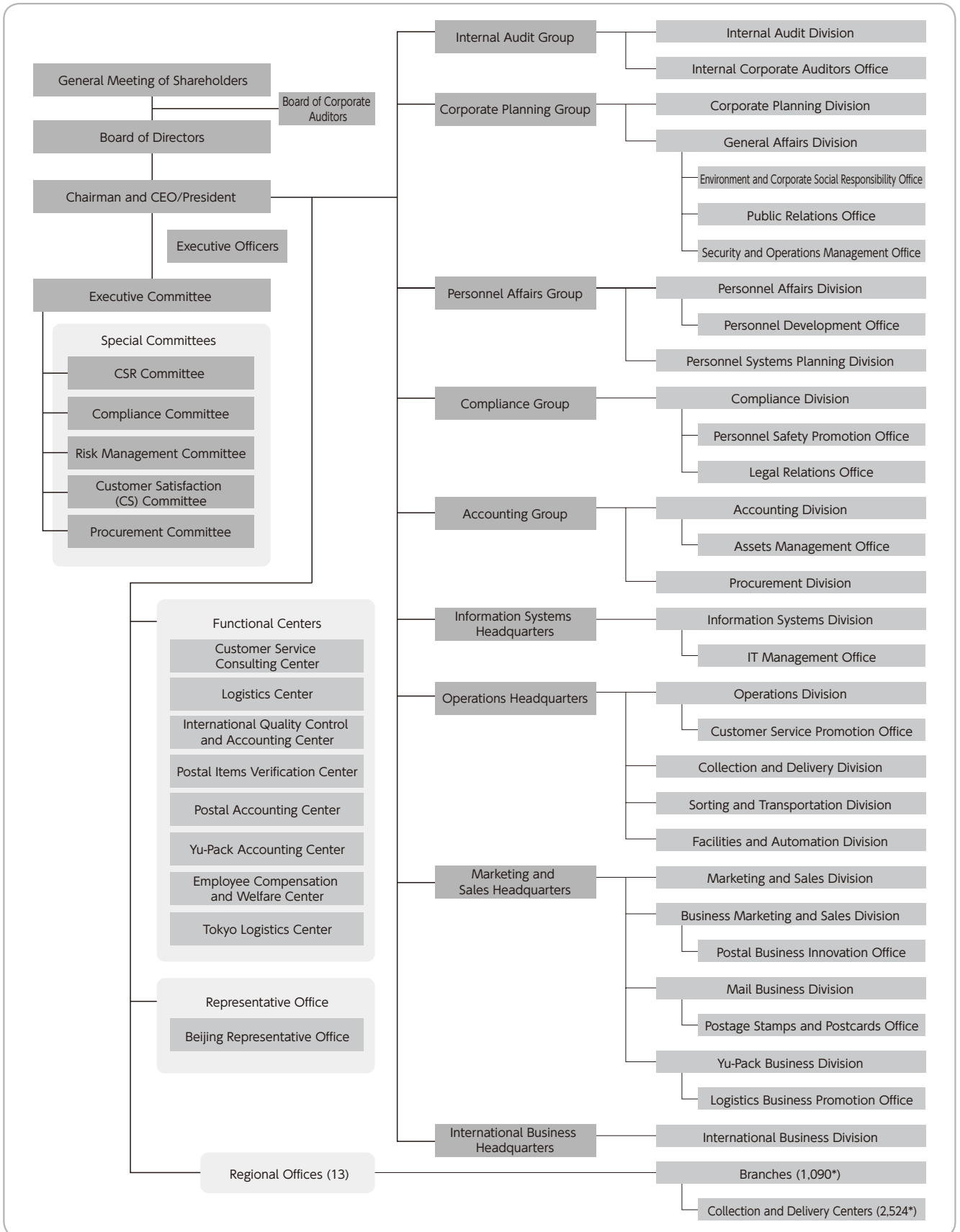
3. Executive Officers

First Executive Officer	Hisamitsu Gannyo	Executive Officer	Naoki Nakashima
Senior Executive Officer (Concurrently holds the position of Senior Executive Officer at Japan Post Holdings Co., Ltd.)	Takao Miwa	Executive Officer	Hideyuki Hokazono
Senior Executive Officer	Seiji Katsuno	Executive Officer	Kazuaki Daikaku
Senior Executive Officer	Yuji Uenuma	Executive Officer	Shuji Obu
Senior Executive Officer	Seiki Fukuda	Executive Officer	Keiichi Yano
Senior Executive Officer (Concurrently holds the position of Senior Executive Officer at Japan Post Holdings Co., Ltd.)	Junichiro Miyazaki	Executive Officer	Toru Inasawa
Senior Executive Officer	Chikashi Isayama	Executive Officer	Hidetoshi Kuriyama
Senior Executive Officer	Osamu Hitani	Executive Officer	Toshiyuki Hama
Senior Executive Officer (Concurrently holds the position of Senior Executive Officer at Japan Post Holdings Co., Ltd.)	Masayuki Nakayama	Executive Officer	Yoshihiro Chiba
		Executive Officer (Concurrently holds the position of Executive Officer at Japan Post Network Co., Ltd.)	Shuzo Inoue
		Executive Officer	Hiroyuki Tatsumi
		Executive Officer	Ryutarou Yamamoto
		Executive Officer	Ryosuke Haraguchi

6

Organization Chart

(As of July 1, 2012)



Note: Numbers of branches and collection and delivery centers are as of March 31, 2012.

7

Names and Locations of Regional Offices

(As of July 1, 2012)

Name of regional office	Location
Hokkaido	4-3, Kita 2-jo Nishi, Chuo-ku, Sapporo, Hokkaido 060-8797
Tohoku	1-34, Ichiban-cho 1-chome, Aoba-ku, Sendai, Miyagi 980-8797
Kanto	3-1, Shintoshin, Chuo-ku, Saitama, Saitama 330-9797
Tokyo	6-19, Azabudai 1-chome, Minato-ku, Tokyo 106-8797
Minami Kanto	14-2, Takashima 2-chome, Nishi-ku, Yokohama, Kanagawa 220-8998
Shinetsu	801, Kurita, Nagano, Nagano 380-8797
Hokuriku	1-1, Owari-cho 1-chome, Kanazawa, Ishikawa 920-8797
Tokai	2-5, Marunouchi 3-chome, Naka-ku, Nagoya, Aichi 469-8797
Kinki	3-9, Kitahama Higashi, Chuo-ku, Osaka, Osaka 530-8797
Chugoku	19-8, Higashi Hakushima-cho, Naka-ku, Hiroshima, Hiroshima 730-8797
Shikoku	8-5, Miyata-cho, Matsuyama, Ehime 790-8797
Kyushu	1-1, Joto-machi, Chuo-ku, Kumamoto, Kumamoto 860-8797
Okinawa	26-29, Higashi-machi, Naha, Okinawa 900-8797

8

Number of Offices by Prefecture

(As of March 31, 2012)

Prefecture	Number of offices	Prefecture	Number of offices
Hokkaido	57	Shiga	12
Aomori	10	Kyoto	27
Iwate	15	Osaka	68
Miyagi	18	Hyogo	46
Akita	11	Nara	15
Yamagata	11	Wakayama	12
Fukushima	20	Tottori	4
Ibaraki	30	Shimane	7
Tochigi	17	Okayama	19
Gunma	16	Hiroshima	27
Saitama	52	Yamaguchi	18
Chiba	47	Tokushima	7
Kanagawa	55	Kagawa	10
Yamanashi	11	Ehime	16
Tokyo	88	Kochi	9
Niigata	26	Fukuoka	45
Nagano	24	Saga	8
Toyama	12	Nagasaki	12
Ishikawa	12	Kumamoto	16
Fukui	10	Oita	11
Gifu	19	Miyazaki	6
Shizuoka	31	Kagoshima	11
Aichi	62	Okinawa	14
Mie	16	Nationwide total	1,090

9

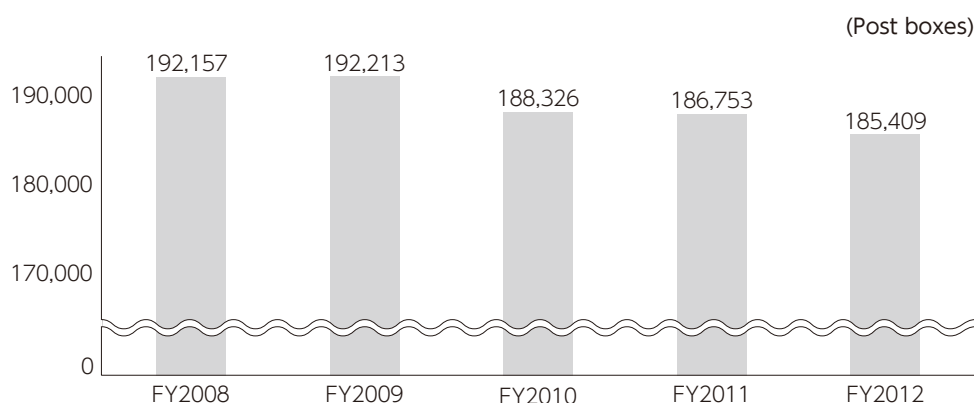
Principal Subsidiaries

(As of March 31, 2012)

Affiliation	Company name	Location	Paid-in capital (millions)	Line of business	Date of establishment	Japan Post Service ownership	Ownership of voting shares
Consolidated Subsidiaries	JP Logi Service Co., Ltd.	Chuo-ku, Osaka	¥34	Preparation and posting of postal items, parcels and mail items	October 15, 1968	67.6%	67.6%
	JP Biz Mail Co., Ltd.	Adachi-ku, Tokyo	¥100	Preparation and posting of postal items	February 1, 2006	51.0%	58.5%
	JP Media Direct Co., Ltd.	Minato-ku, Tokyo	¥300	Product development of direct media	February 29, 2008	51.0%	51.0%
	Japan Post Transport Co., Ltd.	Minato-ku, Tokyo	¥18,250	Truck cargo transportation	November 30, 2007	100.0%	100.0%
	JAPAN POST SANKYU GLOBAL LOGISTICS Co., Ltd.	Chuo-ku, Tokyo	¥300	International air freight forwarding	July 1, 2008	60.0%	60.0%

10

Number of Post Boxes



11

Outsourcing

Japan Post Service outsources some of its business activities as prescribed by law.

■ Outsourcing of Transport of Postal Materials or others

The following table shows the status for the outsourcing of the collection, transport and delivery operations to transport companies and other parties as prescribed in the Law for Outsourcing Postal Material Transport (1949 Law No. 284).

(Millions of yen)

Category	FY2010	FY2011	FY2012
Collection, delivery and transport outsourcing expenses	148,192	206,604	198,258

Note: Collection, delivery and transport expenses include expenses paid for the outsourcing of the collection, transport and delivery of postal materials, etc., to transport companies, etc. In addition, these expenses include miscellaneous expenses for the outsourcing of the collection, transport and delivery of postal materials, etc., such as the cost of renting the collection and delivery worksite, expressway tolls and other items.

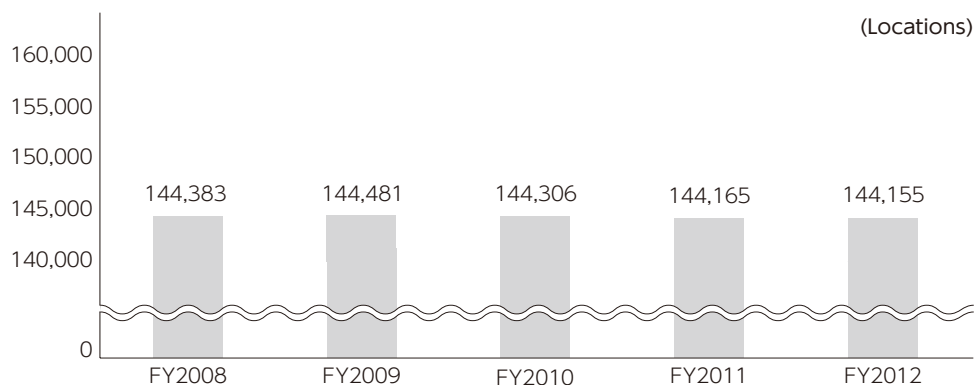
■ Outsourcing of Sale of Postage Stamps or others

The following table shows the status of outsourcing of the sale of postage stamps, etc., as prescribed in the Law Concerning Locations for the Sale of Postage Stamps (1949 Law No. 91).

(Millions of yen)

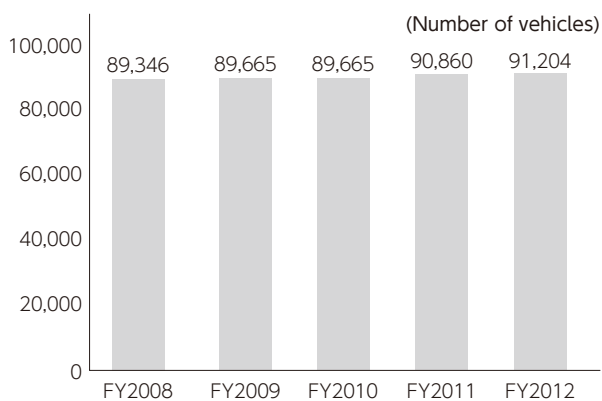
Category	FY2010	FY2011	FY2012
Fees paid to locations selling postage stamps	22,067	20,317	19,655

12 Number of Locations Selling Postage Stamps and Revenue Stamps

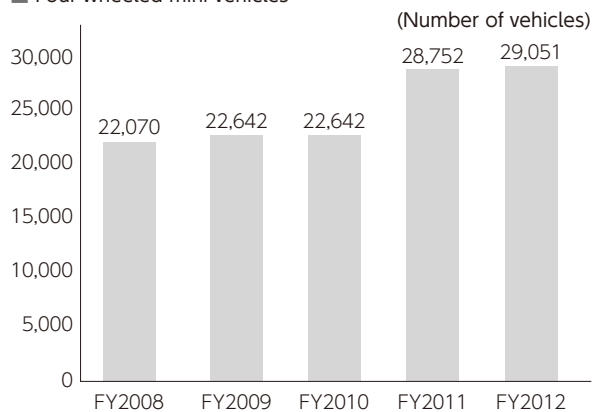


13 Number of Vehicles Owned

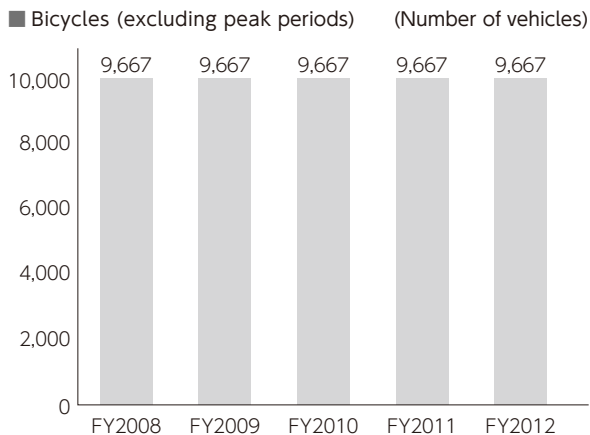
Two-wheeled vehicles (including small motor vehicles)



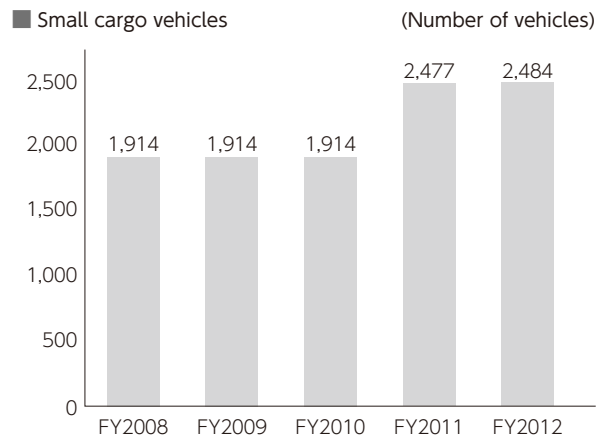
Four-wheeled mini vehicles



Bicycles (excluding peak periods)



Small cargo vehicles



5. Outline of Japan Post Bank Co., Ltd.

1 Company Outline

Company name (in Japanese):	Kabushiki Kaisha Yucho Ginko
Company name:	JAPAN POST BANK Co., Ltd.
Head office location:	3-2, Kasumigaseki 1-chome, Chiyoda-ku, Tokyo 100-8798, Japan
Telephone:	03-3504-4411 (Japan Post Group main number)
Paid-in capital:	¥3,500 billion
Date of establishment:	September 1, 2006 (On October 1, 2007, the name was changed from Yucho Co., Ltd. to Japan Post Bank Co., Ltd.)
Line of business:	Banking
Financial institution code number:	9900

2 Management Philosophy

Management Philosophy

Japan Post Bank is dedicated to serving as "the most accessible and trustworthy Bank in Japan," with operations that are guided by the needs and wishes of our customers.

Dependability: We will comply with laws regulations and other standards of behavior in order to earn the trust of markets, shareholders and employees and consistently serve as a responsible corporate citizen.

Innovation: We will constantly use innovative ideas to improve our management and business activities in response to input from customers and changes in market conditions.

Efficiency: We will pursue improvements in speed and efficiency in order to be a source of products and services that match our customers' requirements.

Expertise: We will work continually on upgrading expertise in specialized fields with the aim of meeting the high expectations of our customers.

3 Information on Shares

1. Number of Shares

Total shares issued	150,000,000
---------------------	-------------

2. Shareholder

Japan Post Holdings	Condition of holdings	
	Shares owned	Percentage of total issued
	150,000,000	100%

4 Number of Employees

12,796* (as of March 31, 2012)

* Number of employees excludes employees seconded to other companies and includes employees seconded to Japan Post Bank Co., Ltd.
Excludes contract and temporary employees.

1. Board Members

Director, Chairman	Shigeo Kawa
Director, President & CEO	Yoshiyuki Izawa (Concurrently holds the position of Representative Executive Officer and Deputy President of Japan Post Holdings Co., Ltd.)
Director (Outside)	Fumio Masada (Formerly held the position of Executive Vice President of Nippon Life Insurance Company)
Director (Outside)	Atsushi Kinebuchi (Formerly held the position of Executive Vice President of Nomura Asset Management Co., Ltd.)
Director (Outside)	Jiro Saito (Concurrently holds the position of Representative Executive Officer and President & CEO of Japan Post Holdings Co., Ltd.)
Director (Outside)	Tomoyoshi Arita (Concurrently holds the position of Attorney-at-Law)

2. Executive Officers (Excludes persons with concurrent posts in the above 1. Board Members)

Executive Vice President	Tomohiro Yonezawa	Executive Officer	Osami Niihori
Executive Vice President	Tomohisa Mase	Executive Officer	Yoko Makino
Senior Managing Executive Officer	Shuichi Ikeda	Executive Officer	Kunihiko Amaha
Senior Managing Executive Officer (Concurrently holds the position of Managing Executive Officer of Japan Post Holdings Co., Ltd.)	Susumu Tanaka	Executive Officer	Naoto Misawa
Senior Managing Executive Officer	Masahiro Murashima	Executive Officer	Masato Wakai
Managing Executive Officer	Riki Mukai	Executive Officer	Masaya Aida
Managing Executive Officer	Hiroshi Yamada	Executive Officer	Katsumi Amano
Managing Executive Officer (Concurrently holds the position of Managing Executive Officer of Japan Post Network Co., Ltd.)	Satoshi Hoshino	Executive Officer	Yoichi Uno
Managing Executive Officer	Hiroichi Shishimi	Executive Officer	Harumi Yano
Managing Executive Officer (Concurrently holds the position of Managing Executive Officer of Japan Post Network Co., Ltd.)	Kikuo Kushibiki	Executive Officer	Yasuyuki Hori
Managing Executive Officer	Chiharu Komachi	Executive Officer	Norio Wakasa

3. Nomination Committee

Chairman	Jiro Saito
Member	Shigeo Kawa
Member	Yoshiyuki Izawa
Member	Fumio Masada
Member	Atsushi Kinebuchi

4. Audit Committee

Chairman	Tomoyoshi Arita
Member	Fumio Masada
Member	Atsushi Kinebuchi

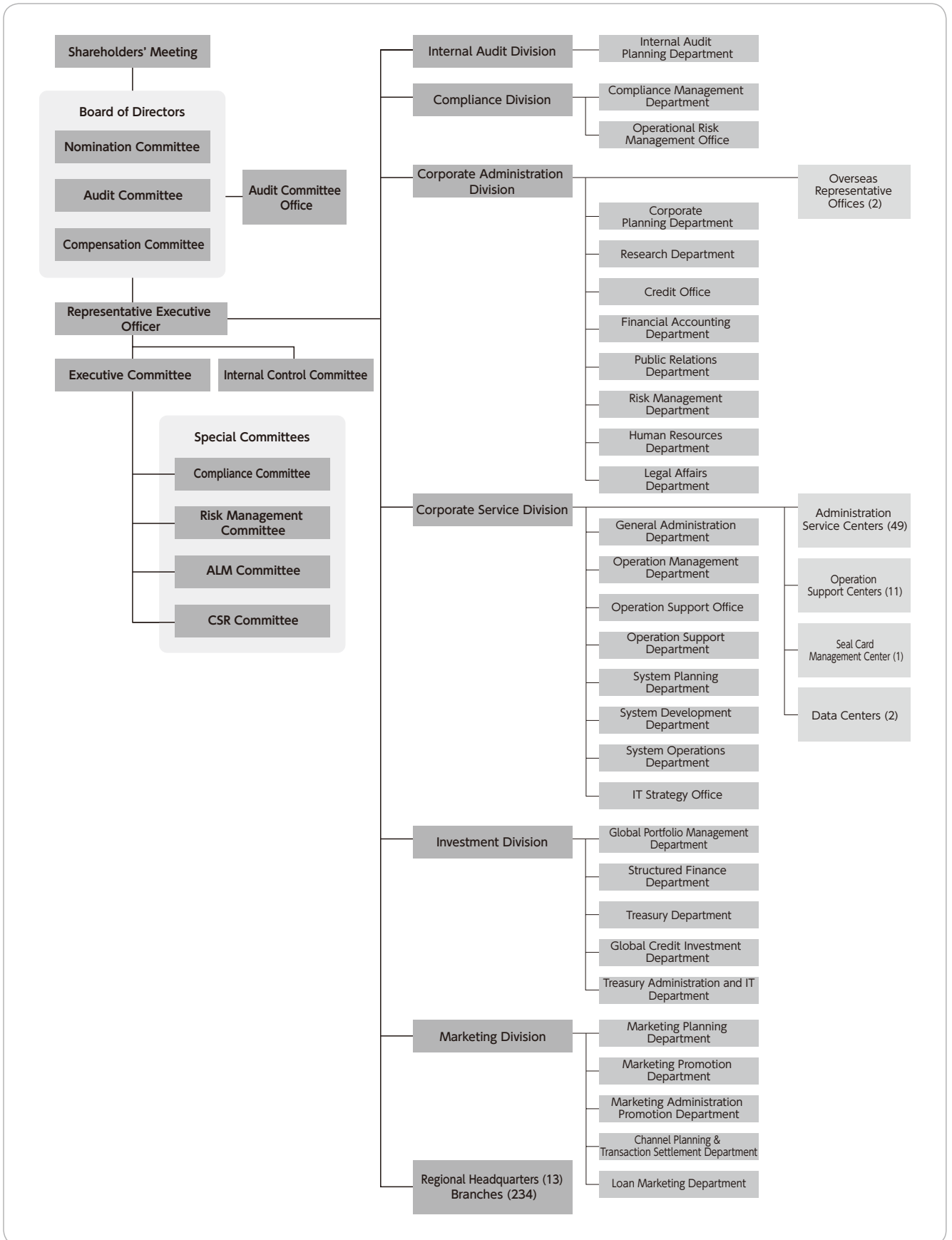
5. Compensation Committee

Chairman	Jiro Saito
Member	Shigeo Kawa
Member	Yoshiyuki Izawa
Member	Fumio Masada
Member	Atsushi Kinebuchi

6

Organization Chart

(As of July 1, 2012)



7

Principal Business Locations

Head Office and 234 Branches

(As of March 31, 2012)

Name of branch	Location	Telephone number
Sapporo Branch	4-3, Kita Nijo Nishi, Chuo-ku, Sapporo, Hokkaido 060-0002	011-214-4300
Sendai Branch	3-3, Ichibancho 1-chome, Aoba-ku, Sendai, Miyagi 980-8711	022-267-8275
Saitama Branch	1-12, Bessho 7-chome, Minami-ku, Saitama, Saitama 336-8799	048-864-7317
Central Branch	Yusen Building 1F, 3-2, Marunouchi 2-chome, Chiyoda-ku, Tokyo 100-8996	03-3284-9618
Nagano Branch	1085-4, Minami Agata-machi, Nagano, Nagano 380-8799	026-226-2550
Kanazawa Branch	1-1, Sanja-machi, Kanazawa, Ishikawa 920-8799	076-224-3844
Nagoya Branch	1-10, Osu 3-chome, Naka-ku, Nagoya, Aichi 460-8799	052-261-6728
Osaka Branch	Osaka Ekimae 1st Building 2F, 3-1, Umeda 1-chome, Kita-ku, Osaka, Osaka 530-0001	06-6347-8112
Hiroshima Branch	6-36, Moto-machi, Naka-ku, Hiroshima, Hiroshima 730-0011	082-222-1315
Matsuyama Branch	5-2, Sanban-cho 3-chome, Matsuyama, Ehime 790-8799	089-941-0820
Kumamoto Branch	1-1, Joto-machi, Kumamoto, Kumamoto 860-0846	096-328-5163
Naha Branch	1-1, Kumoji 1-chome, Naha, Okinawa 900-0015	098-867-8802

Note 1: From April 1, 2012, the Kumamoto Branch changed the notation of its address along with the designation of Kumamoto City as a government ordinance designated city.

1-1, Joto-machi, Chuo-ku, Kumamoto, Kumamoto

Note 2: From July 17, 2012, the Central Branch moved to the following location.

3-2, Marunouchi 2-chome, Chiyoda-ku, Tokyo

8

Japan Post Bank Offices by Prefecture

(As of March 31, 2012) (Branches/Post offices)

Prefecture	Head Office/Principal prefectural offices	Sub-branches	Japan Post Bank agents		Total
			Post offices	Contracted post offices	
Hokkaido	1	4	1,210	280	1,495
Aomori	0	2	265	94	361
Iwate	0	1	307	117	425
Miyagi	1	1	360	87	449
Akita	0	1	273	127	401
Yamagata	0	1	288	106	395
Fukushima	0	3	430	113	546
Ibaraki	0	3	463	54	520
Tochigi	0	2	309	45	356
Gunma	0	3	299	38	340
Saitama	1	16	606	18	641
Chiba	0	13	675	33	721
Kanagawa	0	31	719	14	764
Yamanashi	0	1	200	57	258
Tokyo	1	40	1,457	7	1,505
Niigata	0	3	534	138	675
Nagano	1	2	441	199	643
Toyama	0	2	210	77	289
Ishikawa	1	0	253	70	324
Fukui	0	1	209	31	241
Gifu	0	2	354	81	437
Shizuoka	0	5	478	82	565
Aichi	1	13	825	78	917
Mie	0	2	370	82	454
Shiga	0	1	228	30	259
Kyoto	0	4	438	34	476
Osaka	1	23	1,064	31	1,119

Prefecture	Head Office/Principal prefectural offices	Sub-branches	Japan Post Bank agents		Total
			Post offices	Contracted post offices	
Hyogo	0	12	829	121	962
Nara	0	2	239	79	320
Wakayama	0	1	262	54	317
Tottori	0	1	146	94	241
Shimane	0	1	256	118	375
Okayama	0	2	418	105	525
Hiroshima	1	3	580	115	699
Yamaguchi	0	3	352	61	416
Tokushima	0	1	202	30	233
Kagawa	0	2	187	28	217
Ehime	1	1	314	79	395
Kochi	0	1	228	89	318
Fukuoka	0	4	711	92	807
Saga	0	1	165	39	205
Nagasaki	0	2	309	137	448
Kumamoto	1	1	389	177	568
Oita	0	2	306	91	399
Miyazaki	0	1	195	112	308
Kagoshima	0	1	437	280	718
Okinawa	1	0	181	20	202
Total	12	222	19,971	4,044	24,249

Note 1: The number of post offices refers to the number of sales offices and branches handling bank agency operations (including branches).

2: The number of contracted post offices refers to the number of sales offices or branches commissioned to handle bank agency operations by Japan Post Service Co., Ltd. on behalf of Japan Post Bank Co., Ltd.

3: The number of mobile post offices in Aichi and Tokushima Prefectures is not included in the above totals.

9 Number of ATMs by Prefecture

(As of March 31, 2012)

Prefecture	Number of ATMs
Hokkaido	1,688
Aomori	316
Iwate	344
Miyagi	510
Akita	313
Yamagata	321
Fukushima	500
Ibaraki	573
Tochigi	369
Gunma	355
Saitama	930
Chiba	951
Kanagawa	1,165
Yamanashi	223
Tokyo	2,550
Niigata	645

Prefecture	Number of ATMs
Nagano	536
Toyama	253
Ishikawa	322
Fukui	242
Gifu	415
Shizuoka	582
Aichi	1,146
Mie	425
Shiga	288
Kyoto	581
Osaka	1,573
Hyogo	1,126
Nara	295
Wakayama	299
Tottori	165
Shimane	289

Prefecture	Number of ATMs
Okayama	506
Hiroshima	780
Yamaguchi	432
Tokushima	235
Kagawa	246
Ehime	407
Kochi	274
Fukuoka	1,005
Saga	213
Nagasaki	371
Kumamoto	469
Oita	352
Miyazaki	231
Kagoshima	494
Okinawa	252
Total	26,557

10 Outline of Affiliated Company

(As of March 31, 2012)

Company name	Location	Paid-in capital (Millions of yen)	Line of business	Date of establishment	Japan Post Bank ownership	Ownership of voting shares
SDP Center Co., Ltd.	Chuo-ku, Tokyo	2,000	Bank agency operations	May 28, 1980	45.0%	45.0%

6. Outline of Japan Post Insurance Co., Ltd.

1 Company Outline

Company name (in Japanese) :	Kabushiki Kaisha Kanpo Seimei Hoken
Company name:	JAPAN POST INSURANCE Co., Ltd.
Head office location:	3-2, Kasumigaseki 1-chome, Chiyoda-ku, Tokyo 100-8798, Japan
Telephone:	03-3504-4411 (Japan Post Group main number)
Paid-in capital:	¥500 billion
Date of establishment:	September 1, 2006 (The name of the company was changed from Kanpo Co., Ltd. to Japan Post Insurance Co., Ltd., on October 1, 2007.)
Line of business:	Life insurance

2 Management Philosophy

Management Philosophy

Moving forward with our customers while serving as "Japan's most familiar and trusted insurance company"

To translate this philosophy into specific activities, Japan Post Insurance makes the following promises to stakeholders.

Our promise to customers

We value every contact with customers. We will offer products and services that are easy to understand and use. We will supply accurate information so that customers can use these products and services with confidence.

Our promise to shareholders

We will aim to continuously enhance corporate value to fulfill our obligation to shareholders. We will use sound management systems backed by a suitable risk management framework. We will maintain strong lines of communication with shareholders and other investors.

Our promise to society

We will make compliance one of the most important elements of our business activities. We will actively contribute to public health. We will operate in a manner that is kind to people and eco-friendly.

Our promise to business partners

We will build mutually beneficial relationships based on close cooperation and extensive support. We will supply services and improve the quality of those services by working closely with our business partners. We will increase the value of our brand as a member of the Japan Post Group.

Our promise to employees

We will provide employees with a pleasant and rewarding workplace. We will respect each employee and provide equal opportunities to everyone. We will provide many forms of assistance for employees to upgrade their skills.

3 Information on Shares

1. Number of Shares

Total shares issued	20,000,000
---------------------	------------

2. Shareholder

Japan Post Holdings	Condition of holdings	
	Shares owned	Percentage of total issued
	20,000,000	100%

4

Number of Employees

6,741* (as of March 31, 2012)

* Number of employees excludes employees seconded to other companies and includes employees seconded to Japan Post Insurance Co., Ltd.
Excludes contract and temporary employees.

5

List of Directors, Executive Officers and Management Committees

1. Directors

(As of July 1, 2012)

Chairman	Izumi Yamashita
President, CEO	Masami Ishii
Director (Outside)	Masaharu Hino (Concurrently holds the position of Attorney-at-Law)
Director (Outside)	Hiroshi Koshida (Concurrently holds the position of Adviser to Daiwa Asset Management Co., Ltd.)
Director (Outside)	Toshiaki Katsushima (Concurrently holds the position of Certified Public Accountant)
Director (Outside)	Jiro Saito (Concurrently holds the position of Representative Executive Officer and President & CEO of Japan Post Holdings Co., Ltd.)

2. Executive Officers (Excludes persons holding concurrent posts in addition to the above. 1. Directors)

Deputy President (Concurrently holds the position of Managing Executive Officer of Japan Post Holdings Co., Ltd.)	Toshihisa Minakata	Executive Officer	Masanori Sato
		Executive Officer	Tomoaki Nara
Deputy President	Masaro Sugimoto	Executive Officer	Kazuhiro Ikegawa
Senior Managing Executive Officer	Shoji Awakura	Executive Officer	Tetsuya Senda
Managing Executive Officer	Yoshifumi Ikeda	Executive Officer	Yoshihiko Ido
Managing Executive Officer	Kazuhide Kinugawa	Executive Officer	Shinji Ando
Managing Executive Officer	Masaaki Horigane	Executive Officer	Hiroyuki Kutomi
Managing Executive Officer	Kiyotaka Fujimoto	Executive Officer	Masayuki Tokushige
Managing Executive Officer	Yoshito Horie		
Managing Executive Officer	Masahiko Sugimori		

3. Nomination Committee

Chairman	Jiro Saito
Member	Izumi Yamashita
Member	Masami Ishii
Member	Masaharu Hino
Member	Hiroshi Koshida

4. Audit Committee

Chairman	Masaharu Hino
Member	Hiroshi Koshida
Member	Toshiaki Katsushima

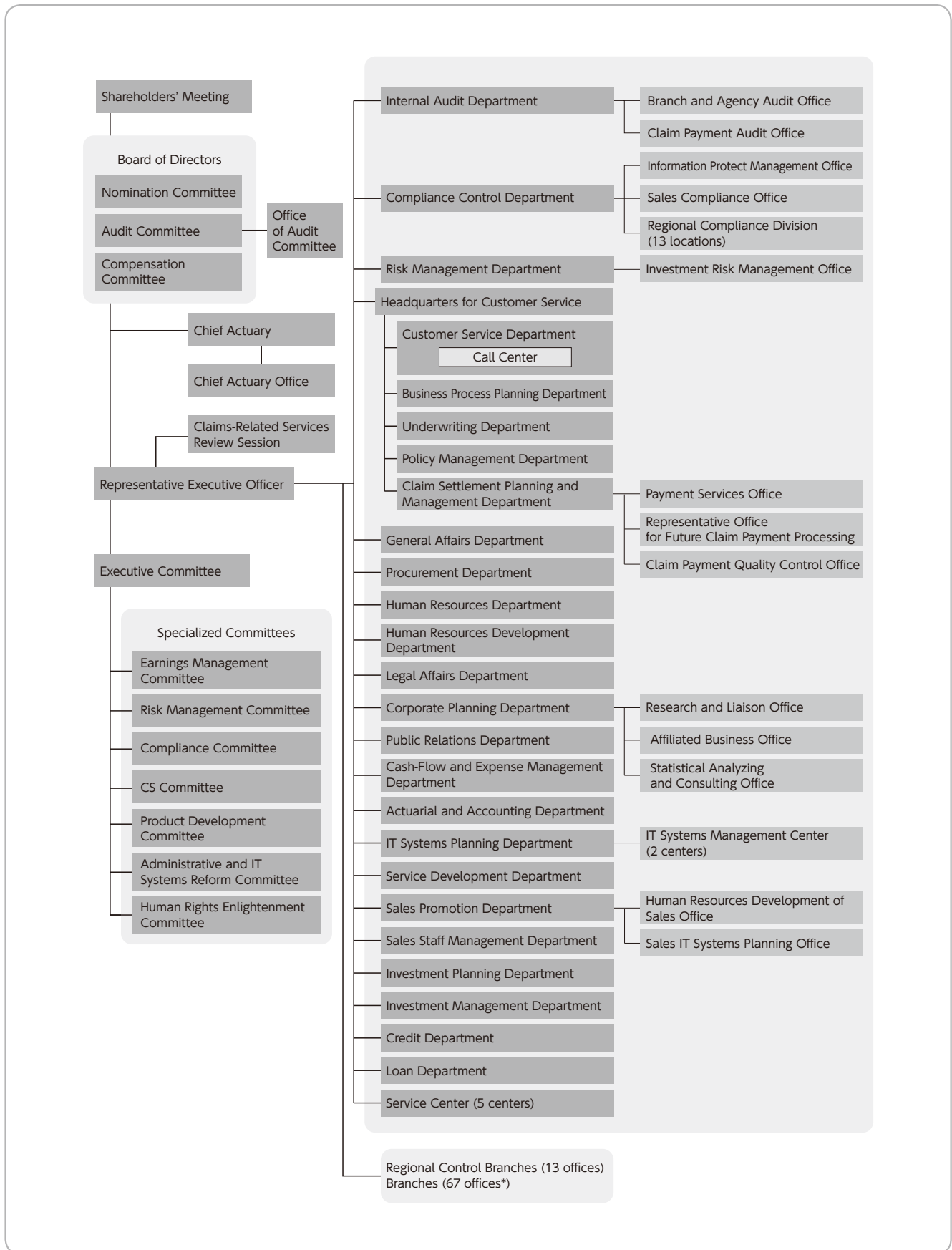
5. Compensation Committee

Chairman	Jiro Saito
Member	Izumi Yamashita
Member	Masami Ishii
Member	Hiroshi Koshida
Member	Toshiaki Katsushima

6

Organization Chart

(As of July 1, 2012)



Corporate Data

Financial Data

Others

*66 offices from July 17, 2012

7

Principal Branches (Regional Control Offices)

(As of July 1, 2012)

Name of branch	Location	Telephone number
Sapporo	2-1, Odori Higashi, Chuo-ku, Sapporo, Hokkaido 060-0041	011-221-6375
Sendai	1-1-34, Ichibancho, Aoba-ku, Sendai, Miyagi 980-8797	022-267-7849
Saitama	3-1, Shintoshin, Chuo-ku, Saitama, Saitama 330-9797	048-600-2066
Yokohama	5-3, Nihon Odori, Naka-ku, Yokohama, Kanagawa 231-8799	045-212-3928
Azabu (Note 1)	6-19, Azabudai 1-chome, Minato-ku, Tokyo 106-8799	03-3583-9928
Nagano	801, Kurita, Nagano, Nagano 380-8797	026-231-2342
Kanazawa	1-1, Owari-cho 1-chome, Kanazawa, Ishikawa 920-8797	076-220-3171
Nagoya	2-5, Marunouchi 3-chome, Naka-ku, Nagoya, Aichi 469-8797	052-963-6351
Osaka	3-9, Kitahama Higashi, Chuo-ku, Osaka, Osaka 530-8797	06-6944-5765
Hiroshima	19-8, Higashi Hakushima-cho, Naka-ku, Hiroshima, Hiroshima 730-8797	082-224-5165
Matsuyama	8-5, Miyata-machi, Matsuyama, Ehime 790-8797	089-936-5612
Kumamoto	1-1, Joto-machi, Chuo-ku, Kumamoto, Kumamoto 860-8797	096-328-5343
Naha	3-3-8, Tsubogawa, Naha, Okinawa 900-8799	098-833-5516

In addition to the above, there are 67 other branches. (Note 2)

Note 1: From July 17, 2012, the Azabu Branch merged with the Nihonbashi Branch, moved its location and changed its name to the Tokyo Branch.

Tokyo Branch
Address
3-17-1 Toranomon
Minato-ku
Tokyo 105-0001
Telephone: 03-6402-6515

Note 2: 66 branches from July 17, 2012

8

Outline of Subsidiary

(As of March 31, 2012)

Company name	Location	Paid-in capital (Millions of yen)	Line of business	Date of establishment	Japan Post Insurance Ownership	Ownership of voting shares
Japan Post Insurance System Solutions Co., Ltd.	Shibuya-ku, Tokyo	60	Commissioned design, de- velopment, maintenance and operations of infor- mation systems	March 8, 1985	100.0%	100.0%