

Corporate Data

CONTENTS

1. Japan Post Group Management Philosophy, Policy, and Charter of Corporate Conduct	
1. Group Management Philosophy	84
2. Group Management Policy	84
3. Japan Post Group Charter of Corporate Conduct	84
2. Outline of Japan Post Holdings Co., Ltd.	
1. Company Outline	85
2. Information on Shares.....	85
3. Number of Employees	85
4. List of Directors, Executive Officers, and Management Committees	86
5. Organization Chart	88
6. Principal Subsidiaries and Affiliates of Japan Post Holdings	89
7. Museums and Libraries	90
8. Japan Post Teishin Hospitals	90
9. Hotels	91
10. History of the Japan Post Group	93
3. Outline of Japan Post Network Co., Ltd.	
1. Company Outline	94
2. Management Philosophy	94
3. Information on Shares.....	95
4. Number of Employees	95
5. List of Directors, Auditors, and Executive Officers	95
6. Organization Chart.....	97
7. Names and Locations of Regional Offices	98
8. Training Institutes and Internal Audit Offices	98
9. Post Offices by Prefecture	99
10. Outline of Subsidiary	100
11. History of Japan Post Network	101
4. Outline of Japan Post Service Co., Ltd.	
1. Company Outline	102
2. Management Philosophy	102
3. Information on Shares.....	102
4. Number of Employees	103
5. List of Directors, Auditors, and Executive Officers	103
6. Organization Chart	104
7. Names and Locations of Regional Offices.....	105
8. Number of Offices by Prefecture	105
9. Number of Collection and Delivery Centers...	106
10. Subsidiaries and Affiliated Companies	106
11. Number of Post Boxes	107
12. Number of Locations Selling Postage Stamps and Revenue Stamps	107
13. Number of Vehicles Owned	107
14. History of Japan's Postal Services Business and Japan Post Service	108
5. Outline of Japan Post Bank Co., Ltd.	
1. Company Outline	109
2. Management Philosophy	109
3. Information on Shares.....	109
4. Number of Employees	109
5. List of Directors, Executive Officers, and Management Committees.....	110
6. Organization Chart	111
7. Principal Business Locations	112
8. Japan Post Bank Offices by Prefecture	113
9. Number of ATMs by Prefecture	114
10. Outline of Affiliated Company	114
11. History of Japan's Postal Savings and Japan Post Bank.....	115
6. Outline of Japan Post Insurance Co., Ltd.	
1. Company Outline	116
2. Management Philosophy	116
3. Information on Shares.....	117
4. Number of Employees	117
5. List of Directors, Executive Officers, and Management Committees.....	118
6. Organization Chart.....	119
7. Principal Branches (Regional Control Offices)	120
8. History of Japan's Postal Life Insurance and Japan Post Insurance	121

1. Japan Post Group Management Philosophy, Policy and Charter of Corporate Conduct

1 Group Management Philosophy

Stressing the security and confidence that Japan Post, as a public organization, has fostered, the Group, as a private corporation, will demonstrate creativity and efficiency to the greatest extent possible, meet customers' expectations, raise customer satisfaction and grow together with customers. The Group will also pursue managerial transparency on its own, observe rules and contribute to the development of society and the region.

2 Group Management Policy

1. We will duly consider our customers' viewpoints, exercise our creativity and provide through our nationwide network a selection of products and services that customers truly appreciate.
2. We will establish effective corporate governance and compliance programs, including internal audits and internal controls.
3. We will maintain the transparency of the Group's operations through the timely and proper disclosure of information, the appropriate use of intra-group transactions and other activities.
4. We will create opportunities for all employees, business partners and the community to grow and develop through mutual cooperation.

3 Japan Post Group Charter of Corporate Conduct

(1) Earn the trust of customers

- We earn the trust of customers by adopting their perspective and meeting their expectations.
- We protect and manage information strictly so that customers can use our services with peace of mind.
- We fulfill our responsibility to explain our operations by conducting highly transparent business operations and disclosing information in a fair manner.

(2) Observe ethical standards

- We continue to conduct business activities with sincerity by complying with laws, regulations, social standards and internal rules.
- We stand firmly against antisocial forces and organizations that threaten the order and safety of civil society.
- We maintain workplace discipline by clearly defining responsibilities and authority and fairly evaluating performance and results.

(3) Place priority on coexistence

- We actively promote environmental conservation and make a significant contribution to society through business activities.
- We aim for sustainable coexistence by placing importance on maintaining dialogues with diverse stakeholders.
- We respect human rights and provide safe and pleasant workplaces.

(4) Create value

- We provide valued and high-quality services that exceed customers' expectations.
- We create value consistently by pursuing greater operating efficiency.
- We play a role as individual employees to create corporate value by promoting mutual understanding and cooperation.

(5) Be a source of change

- We make improvements by responding swiftly to changes and emphasizing speed.
- We exercise our creativity from a broad viewpoint and lofty perspective.
- We aggressively take on the challenge of conducting global business activities.

2. Outline of Japan Post Holdings Co., Ltd.

1 Company Outline

Company name (in Japanese):	Nippon Yusei Kabushiki Kaisha
Company name:	JAPAN POST HOLDINGS Co., Ltd.
Head office location:	3-2, Kasumigaseki 1-chome, Chiyoda-ku, Tokyo 100-8798, Japan
Telephone:	03-3504-4411 (Japan Post Group main number)
Paid-in capital:	¥3,500.0 billion
Date of establishment:	January 23, 2006
Legal basis:	Established under the Japan Post Holdings Co., Ltd. Act (Law No. 98 of October 21, 2005)
Lines of business:	Management of Group companies
Principal business locations:	Human Affairs and Accounting Consolidating Center: 1; Accident Compensation Center: 1; Health Management Administration Center: 1; Health Management Offices: 49; Facility Management Centers: 7; Japan Post Teishin Hospitals: 14; Hotels: 71; Museums and Libraries: 6; JP Customer Service Consulting Center: 1

2 Information on Shares

1. Number of Shares

Authorized number of shares	600,000,000
Total shares issued	150,000,000
Number of shareholders as of the end of fiscal 2010	One

2. Shareholder

Minister of Finance	Condition of holdings	
	Shares owned	Percentage of total issued
	150,000,000	100%

3. Information on Rights to Purchase New Shares, etc.

None outstanding

3 Number of Employees

3,251* (as of March 31, 2010)

* Number of regular employees. Includes employees seconded to Japan Post Holdings Co., Ltd. Excludes employees seconded to other companies and temporary employees.

4

List of Directors, Executive Officers and Management Committees

(As of July 1, 2010)

1. Directors

Chairman (Outside)	Takashi Nishioka (Concurrently holds the positions of Senior Advisor of Mitsubishi Heavy Industries, Ltd., and Chairman of the Board of Mitsubishi Motors Corporation)
President & CEO (Representative Executive Officer)	Jiro Saito (Concurrently holds the positions of Director of Japan Post Network Co., Ltd., Director of Japan Post Service Co., Ltd., Director of Japan Post Bank Co., Ltd., and Director of Japan Post Insurance Co., Ltd.)
Deputy President (Representative Executive Officer)	Atsuo Saka
Deputy President (Representative Executive Officer)	Seijiro Sekine
Deputy President (Representative Executive Officer)	Toshinari Takai
Deputy President (Representative Executive Officer)	Seijiro Adachi
Deputy President (Representative Executive Officer)	Yoshiyuki Izawa (Concurrently holds the position of President & COO of Japan Post Bank Co., Ltd.)
Director (Outside)	Hiromitsu Ishi (Concurrently holds the position of President of The Open University of Japan)
Director (Outside)	Hidekazu Inoue (Concurrently holds the position of Director of Japan Post Network Co., Ltd.; formerly held the position of President of Nippon Telegraph and Telephone East Corporation)
Director (Outside)	Taro Irimajiri (Concurrently holds the position of President & CEO of Irimajiri Group Inc.)
Director (Outside)	Tadashi Okamura (Concurrently holds the positions of Advisor to the Board of Toshiba Corporation, Chairman of the Japan Chamber of Commerce and Industry, and Chairman of the Tokyo Chamber of Commerce and Industry)
Director (Outside)	Hiroshi Okuda (Concurrently holds the position of Senior Advisor of Toyota Motor Corporation)
Director (Outside)	Goro Kamino (Concurrently holds the positions of President of SALA Corporation and President of Gastec Service Inc.)
Director (Outside)	Kiyohiko Koike (Concurrently holds the position of Mayor of Kamo City (Niigata Prefecture))
Director (Outside)	Koichi Sugiyama (Formerly held the position of Executive Vice President of Mitsubishi Heavy Industries, Ltd.)
Director (Outside)	Ayako Sono (Novelist)
Director (Outside)	Akio Harada (Attorney-at-law)
Director (Outside)	Shingo Matsuo (Concurrently holds the positions of Chairman of Kyushu Electric Power Co., Inc., and Chairman of Kyushu Economic Federation)
Director (Outside)	Takao Watanabe (Concurrently holds the positions of President of Watabun Co., Ltd., and Chairman of the Association for the Promotion of Traditional Craft Industries)

2. Executive Officers

Senior Managing Executive Officer	Eisuke Fujimoto
Senior Managing Executive Officer (Concurrently holds the position of Executive Vice President of Japan Post Bank Co., Ltd.)	Tomohiro Yonezawa
Senior Managing Executive Officer	Hideharu Sasaki
Senior Managing Executive Officer (Concurrently holds the position of Executive Vice President of Japan Post Service Co., Ltd.)	Yoshiro Nakajo
Senior Managing Executive Officer (Concurrently holds the position of Executive Vice President of Japan Post Network Co., Ltd.)	Chikanori Saio
Senior Managing Executive Officer (Concurrently holds the position of Senior Managing Executive Officer of Japan Post Bank Co., Ltd.)	Tomohisa Mase
Managing Executive Officer	Kenichiro Hamada
Managing Executive Officer	Kunio Tanigaki
Managing Executive Officer (Concurrently holds the position of Senior Managing Executive Officer of Japan Post Insurance Co., Ltd.)	Toshihisa Minakata
Managing Executive Officer	Shuichi Ikeda
Executive Officer	Yoshihiro Chiba
Executive Officer	Yoshiki Terasaki
Executive Officer	Tetsuhiko Yoshizawa
Executive Officer	Hisao Yamano
Executive Officer	Noboru Ichikura

3. Nomination Committee

Chairperson	Hiroshi Okuda
Member	Hidekazu Inoue
Member	Tadashi Okamura
Member	Jiro Saito
Member	Atsuo Saka

4. Audit Committee

Chairperson	Hiromitsu Ishi
Member	Hidekazu Inoue
Member	Koichi Sugiyama

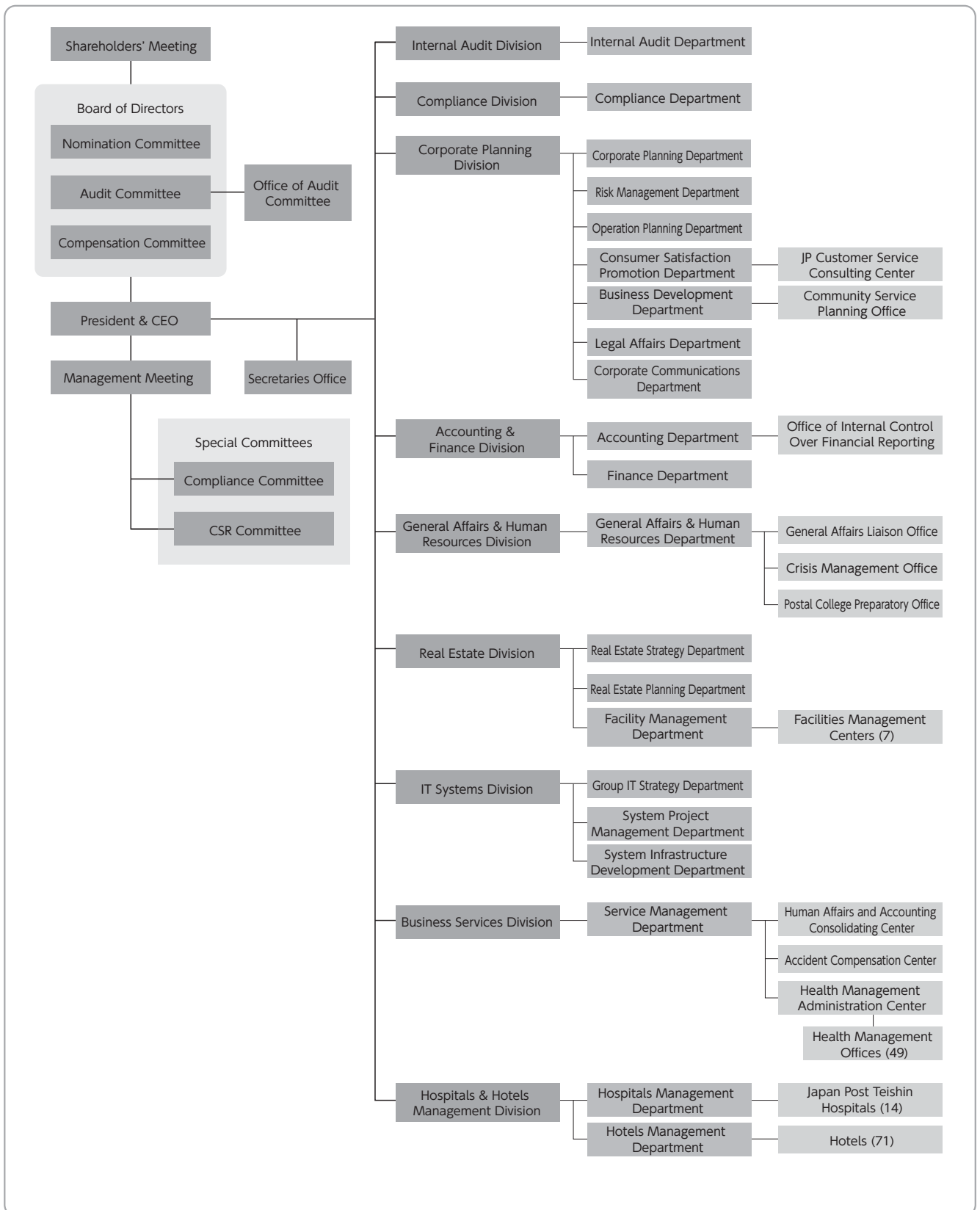
5. Compensation Committee

Chairperson	Hiroshi Okuda
Member	Tadashi Okamura
Member	Takashi Nishioka
Member	Jiro Saito
Member	Atsuo Saka

5

Organization Chart

(As of July 1, 2010)



6

Principal Subsidiaries and Affiliates of Japan Post Holdings

(As of March 31, 2010)

Affiliation	Company name	Location	Issued capital (millions)	Main business	Date of establishment	Percentage ownership of voting rights
Consolidated subsidiaries	Japan Post Network Co., Ltd.	Chiyoda-ku, Tokyo	¥100,000	Post office counter-related business	October 1, 2007	100.0% (0.0%)
	Japan Post Service Co., Ltd.	Chiyoda-ku, Tokyo	¥100,000	Postal service business	October 1, 2007	100.0% (0.0%)
	Japan Post Bank Co., Ltd.	Chiyoda-ku, Tokyo	¥3,500,000	Banking business	September 1, 2006	100.0% (0.0%)
	Japan Post Insurance Co., Ltd.	Chiyoda-ku, Tokyo	¥500,000	Life insurance business	September 1, 2006	100.0% (0.0%)
	Japan Post Staff Co., Ltd.	Chuo-ku, Tokyo	¥140	Contract staffing service	July 3, 2007	100.0% (0.0%)
	Yusei Challenged Co., Ltd.	Setagaya-ku, Tokyo	¥5	Office cleaning	November 20, 2007	100.0% (0.0%)
	Post Office Business Support Co., Ltd.	Koto-ku, Tokyo	¥100	Receipt and forwarding of orders for catalog merchandise	September 11, 2007	100.0% (100.0%)
	JP Logi Service Co., Ltd.	Chuo-ku, Osaka	¥34	Preparation and posting of postal items, parcels, and mail items	October 15, 1968	67.6% (67.6%)
	JP Biz Mail Co., Ltd.	Adachi-ku, Tokyo	¥100	Preparation and posting of postal items	February 1, 2006	58.5% (58.5%)
	JP Logistics Partners Co., Ltd.	Koto-ku, Tokyo	¥100	Facilitation of sales campaigns	September 1, 2004	51.0% (51.0%)
	JP Media Direct Co., Ltd.	Minato-ku, Tokyo	¥250	Product development of mail media	February 29, 2008	51.0% (51.0%)
	JAPAN POST SANKYU GLOBAL LOGISTICS Co., Ltd.	Chuo-ku, Tokyo	¥300	Truck cargo transportation	July 1, 2008	60.0% (60.0%)
	Japan Post Transport Co., Ltd.	Minato-ku, Tokyo	¥18,250	Truck cargo transportation	November 30, 2007	100.0% (100.0%)
	JP Express Co., Ltd. *1	Minato-ku, Tokyo	¥25,000	Special cargo transportation Cargo transportation	June 2, 2008	86.0% (86.0%)
Affiliated companies accounted for under the equity method	ANA & JP Express Co., Ltd.*2	Minato-ku, Tokyo	¥80	Air cargo transportation	February 1, 2006	33.3% (33.3%)
	SDP Center Co., Ltd.	Chuo-ku, Tokyo	¥2,000	Bank agency operations	May 28, 1980	45.0% (45.0%)

Notes: The figures in parentheses in the column showing percentage ownership of voting rights indicate the percentage of indirect ownership through subsidiaries.

*1 The company is scheduled to go into liquidation at the end of July 2010.

*2 On April 1, 2010, all shares were transferred to All Nippon Airways Co., Ltd.

7

Museums and Libraries

The Japan Post Group has museums and libraries relating to its activities, including Tei-Park (Communications Museum), which is Japan's only comprehensive museum related to postal services and telecommunications.

Name of facility	Location	Telephone number
Tei-Park (Communications Museum)	3-1, Otemachi 2-chome, Chiyoda-ku, Tokyo 100-0004	03-3244-6811
Maejima Memorial Museum	1317-1, Shinmeigae, Shimo Ikebe, Joetsu, Niigata 943-0119	025-524-5550
Sakano Memorial Museum	1039-1, Kaidani, kita-ku, Okayama, Okayama 701-1144	086-294-5851
Postal Museum in Meiji-mura (Ujiyamada Post Office)	Museum Meiji-mura, 1 Uchiyama, Inuyama, Aichi 484-0000	0568-67-0314
Atomic Bomb Information Museum, located in the former Outpatient Wing of the Japan Post Hiroshima Teishin Hospital	19-8, Higashi Hakushima-cho, Naka-ku, Hiroshima, Hiroshima 730-0004	Note
Okinawa Postal Museum	3-8, Tsubokawa 3-chome, Naha, Okinawa 900-8799	098-854-0255

Note: Persons wishing to visit the Atomic Bomb Information Museum, located in the former Outpatient Wing of the Japan Post Hiroshima Teishin Hospital should contact the General Affairs section of the Japan Post Hiroshima Teishin Hospital at 082-224-5350 (Japanese only).

8

Japan Post Teishin Hospitals

Name of facility	Location	Telephone number
Japan Post Sapporo Teishin Hospital	1-5-1, Kawazoe 14-jo, Minami-ku, Sapporo, Hokkaido 005-8798	011-571-5103
Japan Post Sendai Teishin Hospital	5-1, Chuo 4-chome, Aoba-ku, Sendai, Miyagi 980-8798	022-268-3150
Japan Post Yokohama Teishin Hospital	13-10, Nishi Kanagawa 1-chome, Kanagawa-ku, Yokohama, Kanagawa 221-8798	045-321-4783
Japan Post Tokyo Teishin Hospital	14-23, Fujimi 2-chome, Chiyoda-ku, Tokyo 102-8798	03-5214-7111
Japan Post Niigata Teishin Hospital	2-8, Yachiyo 2-chome, Chuo-ku, Niigata, Niigata 950-8798	025-244-4700
Japan Post Toyama Teishin Hospital	2-29, Kashima-machi 2-chome, Toyama, Toyama 930-8798	076-423-7727
Japan Post Nagoya Teishin Hospital	2-5, Izumi 2-chome, Higashi-ku, Nagoya, Aichi 461-8798	052-932-7152
Japan Post Kyoto Teishin Hospital	109, Nishi Rokkakuchō, Shinmachi Nishiiru, Rokkakutori, Nakagyo-ku, Kyoto, Kyoto 604-8798	075-241-7167
Japan Post Osaka Kita Teishin Hospital	1-6, Nakazaki 1-chome, Kita-ku, Osaka, Osaka 530-8798	06-6361-2071
Japan Post Kobe Teishin Hospital	2-43, Kami-tsutsui Dori 6-chome, Chuo-ku, Kobe, Hyogo 651-8798	078-232-7516
Japan Post Hiroshima Teishin Hospital	19-16, Higashi Hakushima-cho, Naka-ku, Hiroshima, Hiroshima 730-8798	082-224-5350
Japan Post Tokushima Teishin Hospital	19-2, Iga-cho 3-chome, Tokushima, Tokushima 770-8798	088-623-8611
Japan Post Fukuoka Teishin Hospital	6-11, Yakuin 2-chome, Chuo-ku, Fukuoka, Fukuoka 810-8798	092-741-0300
Japan Post Kagoshima Teishin Hospital	12-1, Shimo Ishiki 1-chome, Kagoshima, Kagoshima 890-8798	099-223-6013

9 Hotels

The Japan Post Group owns the following hotels.

*Number of hotels as of July 1, 2010.

1. Kanpo no Yado Inns

Number	Name of facility	Location	Telephone number	Number of rooms	Conclusion of disaster and accident prevention agreements
1	Otaru	2-670, Asarigawa Onsen, Otaru, Hokkaido 047-0192	0134-54-8511	31	○
2	Tokachigawa	9-1, Kita, Tokachigawa Onsen, Otofuke-cho, Kato-gun, Hokkaido 080-0262	0155-46-2141	43	○
3	Ichinoseki	147-5, Horyu, Genbi-cho, Ichinoseki, Iwate 021-0101	0191-29-2131	55	○
4	Yokote	1-20, Shirotsuke, Mutsunari, Yokote, Akita 013-0008	0182-32-5055	42	○
5	Matsushima	89-53, Minami-Akasaki, Nobiru, Higashi-Matsushima, Miyagi 981-0411	0225-88-3411	54	○
6	Koriyama	3-198, Atami, Atami-machi, Koriyama, Fukushima 963-1380	024-984-3511	36	○
7	Iwaki	60, Shibazaki, Tairafujima, Iwaki, Fukushima 970-0103	0246-39-2670	59	○
8	Oarai	7986-2, Isohama-cho, Oarai-machi, Higashi-Ibaraki-gun, Ibaraki 311-1301	029-267-3191	52	○
9	Itako	1830-1, Mizuhara, Itako, Ibaraki 311-2404	0299-67-5611	58	○
10	Shiobara	1256, Shiobara, Nasushiobara, Tochigi 329-2921	0287-32-2845	39	○
11	Tochigi Kitsuregawa Onsen	5296-1, Kitsuregawa, Sakura, Tochigi 329-1412	028-686-2822	53	○
12	Kusatsu	464-1051, Kusatsu, Kusatsu-machi, Agatsuma-gun, Gunma 377-1794	0279-88-5761	48	○
13	Isobe	22, Gobara, Annaka, Gunma 379-0135	027-385-6321	51	○
14	Yorii	2267, Sueno, Yorii-machi, Osato-gun, Saitama 369-1205	048-581-1165	51	○
15	Kamogawa	1137, Nishi-cho, Kamogawa, Chiba 296-0043	04-7092-1231	101	○
16	Asahi	2280-1, Nittama, Asahi, Chiba 289-2525	0479-63-2161	75	○
17	Katsuura	2183-5, Ubara, Katsuura, Chiba 299-5243	0470-76-3011	50	○
18	Ome	668-2, Komaki-cho 3-chome, Ome, Tokyo 198-0053	0428-23-1171	52	○
19	Hakone	159, Motohakone, Hakone-machi, Ashigarashimo-gun, Kanagawa 250-0522	0460-84-9126	29	○
20	Isawa	348-1, Matsumoto, Isawa-cho, Fuefuki, Yamanashi 406-0021	055-262-3755	54	○
21	Kashiwazaki	2-15, Kotobuki-cho, Kashiwazaki, Niigata 945-0846	—	—	—
22	Suwa	15-16, Owa 2-chome, Suwa, Nagano 392-0001	0266-52-1551	36	○
23	Atami (Main Building)	12-3, Minaguchi-cho 2-chome, Atami, Shizuoka 413-0016	0557-83-6111	159	○
	Atami (Annex)	13-77, Minaguchi-cho 2-chome, Atami, Shizuoka 413-0016	0557-83-6111	45	
24	Shuzenji	1257-4, Kumasaka, Izu, Shizuoka 410-2411	0558-72-3151	32	○
25	Izukogen	1104-5, Yawatano, Ito, Shizuoka 413-0232	0557-51-4400	59	○
26	Toyama	5691-2, Hane, Fuchu-machi, Toyama, Toyama 939-2694	076-469-3135	40	○
27	Yamashiro	32-1, Onsen-dori, Yamashiro Onsen, Kaga, Ishikawa 922-0254	0761-77-1600	46	○
28	Fukui	43-17, Fuchi-machi, Fukui, Fukui 918-8026	0776-36-5793	33	○
29	Yaizu	1375-2, Hamatome, Yaizu, Shizuoka 425-8533	054-627-0661	43	○
30	Hamanako-Mikkabi	2977-2, Tsuzuki, Mikkabi-cho, Kita-ku, Hamamatsu, Shizuoka 431-1496	053-526-1201	41	○
31	Sangane	1-221, Nyukaizan, Higashihazu, Hazu-cho, Hazu-gun, Aichi 444-0701	0563-62-2650	32	○
32	Chita-Mihama	39, Suhara, Okuda, Mihama-cho, Chita-gun, Aichi 470-3233	0569-87-1511	42	○
33	Ena	2709, Oi-cho, Ena, Gifu 509-7201	0573-26-4600	54	○
34	Gifu-Hashima	1041, Umaminami, Kuwabara-cho, Hashima, Gifu 501-6323	058-398-2631	40	○
35	Toba	1200-7, Arashima-cho, Toba, Mie 517-0021	0599-25-4101	60	○
36	Kumano	1020-7, Ido-cho, Kumano, Mie 519-4324	0597-89-4411	27	○
37	Hikone	3759, Matsubara-cho, Hikone, Shiga 522-0002	0749-22-8090	41	○
38	Maizuru	224-5, Ueyasu, Maizuru, Kyoto 624-0912	—	—	—
39	Tondabayashi	880-1, Ryusen, Tondabayashi, Osaka 584-0053	0721-33-0700	43	○
40	Yamatoheguri	16-1, Kamisho 2-chome, Heguri-cho, Ikoma-gun, Nara 636-0905	0745-45-0351	34	○
41	Nara	9-1, Nijo-cho 3-chome, Nara, Nara 630-8002	0742-33-2351	40	○
42	Shirahama	1688-2, Shirahama-cho, Nishimuro-gun, Wakayama 649-2211	0739-42-2980	31	○
43	Kii-Tanabe	24-1, Mera, Tanabe, Wakayama 646-8501	0739-24-2900	52	○
44	Arima	1617-1, Arima-cho, Kita-ku, Kobe, Hyogo 651-1401	078-904-0951	53	○
45	Ako	883-1, Misaki, Ako, Hyogo 678-0215	0791-43-7501	50	○

Number	Name of facility	Location	Telephone number	Number of rooms	Conclusion of disaster and accident prevention agreements
46	Awajishima	824, Toshima, Awaji, Hyogo 656-1711	0799-82-1073	40	○
47	Kaike	1-7, Kaikeshinden 3-chome, Yonago, Tottori 683-0002	0859-33-4421	35	○
48	Mimasaka Yunogo	674-7, Nakayama, Mimasaka, Okayama 707-0061	0868-72-5551	35	○
49	Takehara	442-2, Nishino-cho, Takehara, Hiroshima 725-0002	0846-29-0141	40	○
50	Hikari	31-1, Murozumi-Higashinosho, Hikari, Yamaguchi 743-0005	0833-78-1515	40	○
51	Yuda	1-42, Kanda-cho, Yamaguchi, Yamaguchi 753-0064	083-922-5226	40	○
52	Kannonji	1101-4, Ikenoshiri-cho, Kannonji, Kagawa 768-0031	0875-27-6161	55	○
53	Sakaide	2048-91, Takaya-cho, Sakaide, Kagawa 762-0017	0877-47-0531	41	○
54	Tokushima	3-70, Nakatsuyama, Hachiman-cho, Tokushima, Tokushima 770-8071	088-625-1255	46	○
55	Dogo	3-1, Mizonobe-machi, Matsuyama, Ehime 791-0101	089-977-0460	54	○
56	Ino	1569, Hakawa, Ino-cho, Agawa-gun, Kochi 781-2128	088-892-1580	52	○
57	Kitakyushu	2829, Arige, Wakamatsu-ku, Kitakyushu, Fukuoka 808-0123	093-741-1335	50	○
58	Yanagawa	10-1, Yashiro-machi, Yanagawa, Fukuoka 832-0057	0944-72-6295	40	○
59	Shimabara	8362-3, Hakusan-machi, Shimabara, Nagasaki 855-0824	—	—	—
60	Beppu	457, Tsurumi, Beppu, Oita 874-0844	0977-66-1271	49	
61	Hita	685-6, Nakanoshima-machi, Hita, Oita 877-0074	0973-24-0811	53	○
62	Yamaga	2450, Shijiki, Yamaga, Kumamoto 861-0542	0968-43-5121	28	○
63	Aso	5936, Miyaji, Ichinomiya-machi, Aso, Kumamoto 869-2612	0967-22-1122	66	○
64	Nichinan	2228-1, Hoshikura, Nichinan, Miyazaki 889-2533	0987-22-5171	46	○
65	Recreation Center in Naha	9-15, Minato-machi 2-chome, Naha, Okinawa 900-0001	098-862-4740	76	○

2. Kanpo no Sato Inns

Number	Name of facility	Location	Telephone number	Number of rooms	Conclusion of disaster and accident prevention agreements
66	Sakata	17-26, Iimoriyama 3-chome, Sakata, Yamagata 998-8588	0234-31-4126	39	○
67	Hakusan-Oguchi	43-3, U, Seto, Hakusan, Ishikawa 920-2331	076-256-8080	43	○
68	Shobara	281-1, Shinjo-cho, Shobara, Hiroshima 727-0004	0824-73-1800	62	○
69	Usa	1571-1, Kawabe, Usa, Oita 879-0452	0978-37-2288	32	○

3. Rafre Saitama and Other Facilities

Number	Name of facility	Location	Telephone number	Number of rooms	Conclusion of disaster and accident prevention agreements
70	Rafre Saitama	3-2, Shintoshin, Chuo-ku, Saitama, Saitama 330-0081	048-601-1111	187	○
71	U-Port Recreation Center in Setagaya	17-1, Kamata 2-chome, Setagaya, Tokyo 157-0077	03-3709-0161	—	○

Notes 1: For more details, contact the hotels directly or call the customer service center of *Kanpo no Yado* inns at 0120-715294 (weekdays: 9:30 to 18:15).

2: *Kanpo no Yado* inns located in Kashiwazaki, Maizuru and Shimabara are temporarily closed.

3: Rooms for long-stay customers at *Kanpo no Yado* inns (former welfare facilities for elderly policyholders) have been closed as of March 31, 2009.

* Disaster and accident prevention agreements are cooperation agreements concluded in advance with local governments, which stipulate that facilities may be used as evacuation areas, for bathing or for the provision of food in the event of a disaster, based on a request from the local government.

10 History of the Japan Post Group

April 1871	Modern postal service introduced
January 1875	Government mail offices and mail handling offices renamed post offices
	Postal money order service established
May 1875	Postal savings service established
December 1885	Ministry of Communications established
March, 1906	Postal <i>giro</i> service established
October, 1916	Postal life insurance services established
June, 1949	The Ministry of Posts and Telecommunications established
January, 2001	In accordance with the central government reform, Ministry of Public Management, Home Affairs and Posts and Telecommunications (MPHPT) and Postal Service Agency established
April, 2003	Japan Post established (and integrated with the Postal Life Insurance Welfare Corporation)
January, 2006	Japan Post Holdings Co., Ltd. established as a preparation and planning company for privatization
October, 2007	Japan Post Group (Japan Post Holdings Co., Ltd., Japan Post Network Co., Ltd., Japan Post Service Co., Ltd., Japan Post Bank Co., Ltd. and Japan Post Insurance Co., Ltd.) established
February, 2008	Agreement to establish a comprehensive alliance with LAWSON, INC. signed
May, 2008	Japan Post Forest program launched
June, 2008	Redevelopment plan of Tokyo Central Post Office announced
October, 2008	"Write a letter to yourself in the future" project implemented (until January 2009)
December, 2009	Holding meetings to gather feedback on Japan Post Group services
	Report on the commissioning of post office monitors

3. Outline of Japan Post Network Co., Ltd.

1 Company Outline

Company name (in Japanese):	Yubinkyoku Kabushiki Kaisha
Company name:	JAPAN POST NETWORK Co., Ltd.
Head office location:	3-2, Kasumigaseki 1-chome, Chiyoda-ku, Tokyo 100-8798, Japan
Telephone:	03-3504-4411 (Japan Post Group main number)
Paid-in capital:	¥100 billion
Date of establishment:	October 1, 2007
Legal basis:	Established under the Japan Post Network Act (Law No. 100 of October 21, 2005)
Lines of business:	Postal counter operations for regular mail, parcels and other items; sales of revenue stamps; bank agency services; intermediary services for financial products; solicitation of life and non-life insurance; real estate business; merchandise sales; and operations consigned by local government entities

2 Management Philosophy

Management Philosophy

Japan Post Network will offer products and services transparently through readily available post office networks, aiming to contribute to “helping customers lead a better and more comfortable life at present and in the future” and realize excellent management so that customers and consignors will use Japan Post Network’s services over the long term.

1. We will supply products and services that precisely match customers’ needs from the perspective of each one of them.
2. We will create an even better infrastructure for our customers’ lives, constantly upgrading the post office network’s capabilities by evolving with social and regional changes.
3. We will fulfill our responsibilities as a corporate citizen by establishing corporate governance systems and strictly implementing compliance.
4. We will encourage all employees to refine their skills and aim for higher goals while interacting with society and the residents of the communities we serve.

3 Information on Shares

1. Number of Shares

Total shares issued	4,000,000
---------------------	-----------

2. Shareholder

Japan Post Holdings	Condition of holdings	
	Shares owned	Percentage of total issued
	4,000,000	100%

4 Number of Employees

111,253* (as of March 31, 2010)

* Number of regular employees. Includes employees seconded to Japan Post Network Co., Ltd. Excludes employees seconded to other companies and temporary employees.

5 List of Directors, Auditors and Executive Officers

(As of July 1, 2010)

1. Directors

Chairman & CEO.....	Koji Furukawa
President.....	Akira Nagatomi
Executive Vice President.....	Chikanori Saio (Concurrently holds the position of Senior Managing Executive Officer of Japan Post Holdings Co., Ltd.)
Director (Outside).....	Hidekazu Inoue (Formerly held the position of President of Nippon Telegraph and Telephone East Corporation; Concurrently holds the post of Director of Japan Post Holdings Co., Ltd.)
Director (Outside).....	Seisuke Ueshima (Formerly held the position of Chairman of Yamaha Corporation)
Director (Outside).....	Jiro Saito (Concurrently holds the position of Representative Executive Officer and President & CEO of Japan Post Holdings Co., Ltd.)

2. Auditors

Haruki Inuma
Kiyoshi Nishimura
Yoshikazu Yamaguchi
Satoru Ito

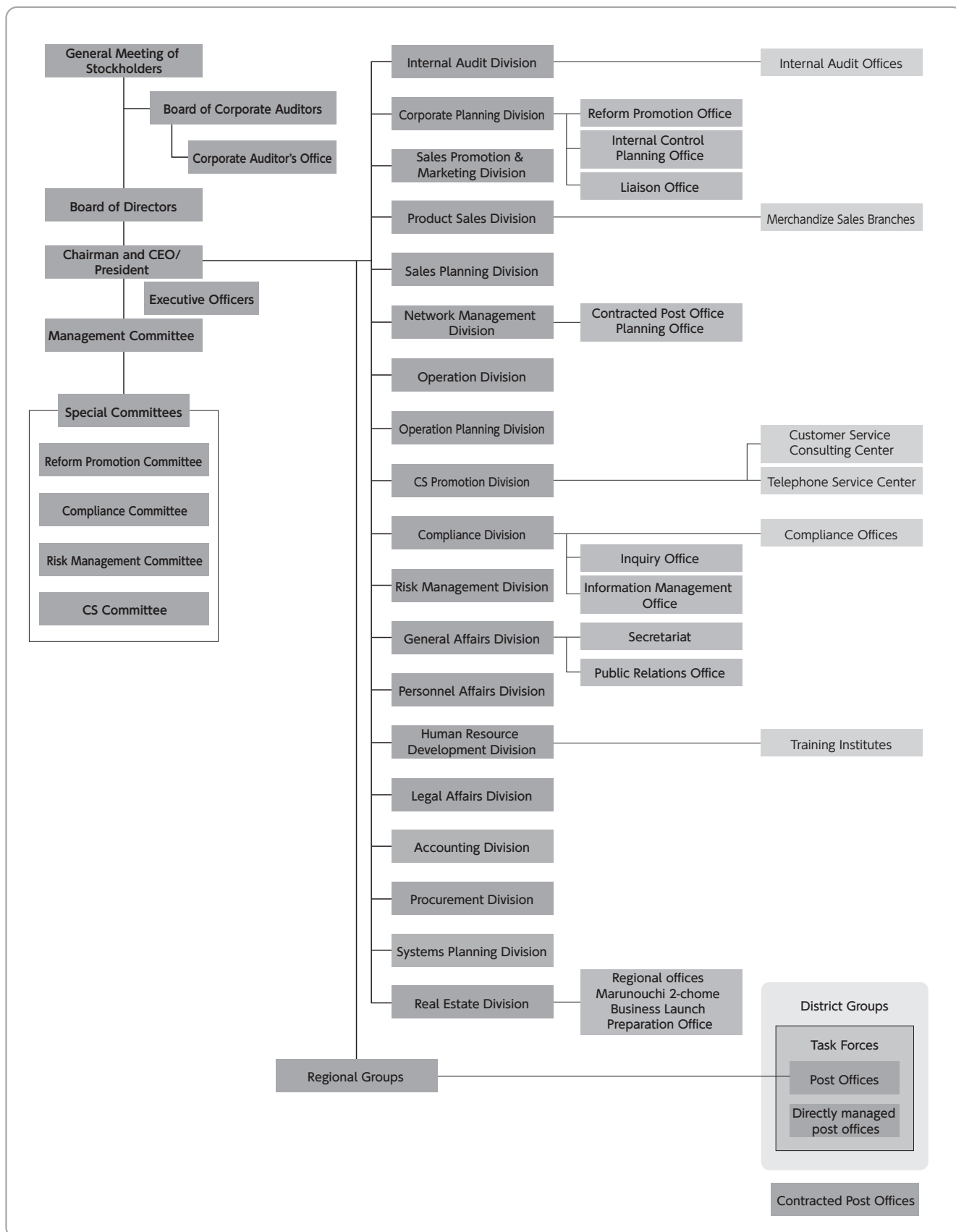
3. Executive Officers

Senior Managing Executive Officer	Kiyoteru Suzuki
Senior Managing Executive Officer	Nobuyuki Hidaka
Managing Executive Officer	Manabu Kawamura
Managing Executive Officer	Hitoshi Shirakawa
Managing Executive Officer	Kinzo Nakazawa
Managing Executive Officer	Toshihiro Tsuboi
Managing Executive Officer	Kazuya Yamaguchi
<small>(Concurrently holds the position of Managing Executive Officer of Japan Post Bank, Co., Ltd.)</small>	
Managing Executive Officer	Masatoshi Shinoda

Managing Executive Officer	Satoshi Hoshino
<small>(Concurrently holds the position of Managing Executive Officer of Japan Post Bank, Co., Ltd.)</small>	
Executive Officer	Shin Ueda
Executive Officer	Atsuko Onodera
Executive Officer	Kikuo Kushibiki
Executive Officer	Yoshikazu Kurita
Executive Officer	Kiyoshi Kobayashi
Executive Officer	Yoshihiko Ota

6 Organization Chart

(As of July 1, 2010)



7

Names and Locations of Regional Offices

(As of July 1, 2010)

Name of regional office	Location
Hokkaido	4-3, Kita 2-jo Nishi, Chuo-ku, Sapporo, Hokkaido 060-8797
Tohoku	1-34, Ichiban-cho 1-chome, Aoba-ku, Sendai, Miyagi 980-8797
Kanto	3-1, Shintoshin, Chuo-ku, Saitama, Saitama 330-9797
Tokyo	6-19, Azabudai 1-chome, Minato-ku, Tokyo 106-8797
Minami Kanto	1-1, Sakuragi-cho, Naka-ku, Yokohama, Kanagawa 231-8694
Shinetsu	801, Kurita, Nagano, Nagano 380-8797
Hokuriku	1-1, Owari-cho 1-chome, Kanazawa, Ishikawa 920-8797
Tokai	2-5, Marunouchi 3-chome, Naka-ku, Nagoya, Aichi 469-8797
Kinki	3-9, Kitahama Higashi, Chuo-ku, Osaka, Osaka 530-8797
Chugoku	19-8, Higashi Hakushima-cho, Naka-ku, Hiroshima, Hiroshima 730-8797
Shikoku	8-5, Miyata-cho, Matsuyama, Ehime 790-8797
Kyushu	1-1, Joto-machi, Kumamoto, Kumamoto 860-8797
Okinawa	26-29, Higashi-machi, Naha, Okinawa 900-8797

8

Training Institutes and Internal Audit Offices

Training Institutes: 11

Internal Audit Offices: 50

*The number of training institutes includes Postal College.

9

Post Offices by Prefecture

(As of March 31, 2010)

Prefecture	Post offices in service				Post offices out of service				Grand total
	Directly managed post offices		Contracted post offices	Total	Directly managed post offices		Contracted post offices	Total	
	Regular post offices	Post office branches			Regular post offices	Post office branches			
Hokkaido	1,215	0	273	1,488	0	0	27	27	1,515
Aomori	267	0	94	361	0	0	1	1	362
Iwate	308	0	119	427	0	0	5	5	432
Miyagi	363	0	93	456	0	0	0	0	456
Akita	273	0	128	401	0	0	0	0	401
Yamagata	289	0	108	397	0	0	1	1	398
Fukushima	432	0	111	543	0	0	5	5	548
Ibaraki	465	0	52	517	0	0	4	4	521
Tochigi	311	0	43	354	0	0	4	4	358
Gunma	302	0	36	338	0	0	2	2	340
Saitama	623	0	17	640	0	0	2	2	642
Chiba	691	0	34	725	0	0	0	0	725
Kanagawa	753	1	13	767	0	0	1	1	768
Yamanashi	201	0	57	258	0	0	9	9	267
Tokyo	1,497	5	7	1,509	8	0	0	8	1,517
Niigata	535	2	137	674	0	0	10	10	684
Nagano	445	0	199	644	0	0	16	16	660
Toyama	212	0	77	289	0	0	2	2	291
Ishikawa	254	1	70	325	0	0	2	2	327
Fukui	210	0	32	242	0	0	1	1	243
Gifu	355	1	88	444	0	0	14	14	458
Shizuoka	484	0	91	575	0	0	28	28	603
Aichi	835	5	77	917	0	0	17	17	934
Mie	372	0	85	457	0	0	10	10	467
Shiga	229	0	30	259	0	0	2	2	261
Kyoto	441	2	34	477	1	0	0	1	478
Osaka	1,086	6	31	1,123	0	0	0	0	1,123
Hyogo	840	3	121	964	0	0	2	2	966
Nara	241	0	79	320	0	0	3	3	323
Wakayama	263	0	54	317	0	0	0	0	317
Tottori	147	0	95	242	0	0	5	5	247
Shimane	257	0	115	372	0	0	7	7	379
Okayama	419	3	101	523	0	0	13	13	536
Hiroshima	583	1	112	696	0	0	9	9	705

Prefecture	Post offices in service				Post offices out of service				Grand total
	Directly managed post offices		Contracted post offices	Total	Directly managed post offices		Contracted post offices	Total	
	Regular post offices	Post office branches			Regular post offices	Post office branches			
Yamaguchi	354	2	59	415	0	0	6	6	421
Tokushima	203	0	30	233	0	0	6	6	239
Kagawa	189	0	30	219	0	0	8	8	227
Ehime	316	0	75	391	0	0	8	8	399
Kochi	229	0	93	322	0	0	1	1	323
Fukuoka	714	0	94	808	0	0	3	3	811
Saga	166	0	40	206	0	0	0	0	206
Nagasaki	311	0	136	447	0	0	2	2	449
Kumamoto	391	0	176	567	0	0	2	2	569
Oita	308	0	93	401	0	0	1	1	402
Miyazaki	196	0	113	309	0	0	1	1	310
Kagoshima	436	2	281	719	0	0	2	2	721
Okinawa	180	2	20	202	0	0	0	0	202
Nationwide total	20,191	36(Note 1)	4,053	24,280	9	0	242(Note 2)	251	24,531

* The respective number of post offices include those that are not commissioned to carry out bank agency and insurance operations and excludes mobile post offices.

* Contracted post offices operate under consignment contracts.

* Post offices out of service are those post offices where customers have been informed that the office is being closed temporarily and counter services have been suspended.

Note 1: Of this total of 36, two post office branches were established as an emergency measure while a contracted post office was temporarily closed.

2: Services in areas where contracted post offices have been closed are as follows. Additionally, since October 1, 2007, 375 contracted post offices that have been temporarily closed resumed operations, and the number of contracted post offices temporarily closed has been reduced by 175.

Number of contracted post offices out of service	Number of instances where services are provided by personnel dispatched to the location	Number of instances where services are provided by mobile post offices
242	90	5 (2 vehicles)

10 Outline of Subsidiary

(As of March 3, 2010)

Company name	Location	Paid-in capital (Millions of yen)	Line of business	Date of establishment	Japan Post Network ownership	Ownership of voting shares
Post Office Business Support Co., Ltd.	Koto-ku, Tokyo	¥100	Processing of orders received and placed for catalog sales operations	September 11, 2007	100.0%	100.0%

11 History of Japan Post Network

April 1871	Modern postal service introduced
January 1875	Government mail offices and mail handling offices renamed post offices
	Postal money order service established
May 1875	Postal savings service established
December 1885	Ministry of Communications established
March 1906	Postal <i>giro</i> service established
October 1916	Postal life insurance services established
June 1949	The Ministry of Posts and Telecommunications established
January 2001	Postal Service Agency established as part of realignment of government ministries
April 2003	Japan Post established
January 2006	Japan Post Holdings Co., Ltd. established as a preparation and planning company for privatization
October 2007	Japan Post Group established
	Japan Post Network Co., Ltd. established
	Sales of automobile insurance commenced
December 2007	Forum to investigate ways to strengthen contracted post office service channels established (until March 2008)
February 2008	Alternative services to replace temporarily closed contracted post offices initiated (via external sales and service personnel and mobile post offices)
March 2008	Spring <i>Arigatou-Fair</i> implemented
April 2008	Advertising business started by making effective use of extra space at post offices
May 2008	Variable annuity sales commenced
June 2008	Summer <i>Arigatou-Fair</i> implemented (until August 2008)
August 2008	Post Office Referrals comprehensive lifestyle referral services launched
	Sales of products and services at post offices started (JP LAWSON stores)
October 2008	Sales of third-sector insurance commenced
	Sales of life insurance for companies (for management-level personnel) commenced
	Winter <i>Arigatou-Fair</i> implemented (until December 2008)
November 2008	Post office mail-order shop launched on website
January 2009	Transfer services with other financial institutions via the Zengin Data Telecommunication System started
March 2009	Total printing service launched
	Cargo collection using four-wheeled mini-vehicles started
	Spring <i>Arigatou-Fair</i> implemented (until April 2009)
June 2009	Sales of mail-related products commenced in post offices
	Home-visit financial services commenced at post offices in less-populated areas
July 2009	Increasing term life insurance sales commenced
October 2009	Same Day Speedy Printing Service for New Year's Postcards commenced
November 2009	Launched In print New Year's postcards and New Year's money envelopes
	Trial introduction of electric vehicles (EVs)
March 2010	Spring <i>Arigatou-Fair</i> implemented (until April 2010)

4. Outline of Japan Post Service Co., Ltd.

1 Company Outline

Company name (in Japanese):	Yubin Jigyo Kabushiki Kaisha
Company name:	JAPAN POST SERVICE Co., Ltd.
Head office location:	3-2, Kasumigaseki 1-chome, Chiyoda-ku, Tokyo 100-8798, Japan
Telephone:	03-3504-4411 (Japan Post Group main number)
Paid-in capital:	¥100 billion
Date of establishment:	October 1, 2007
Legal basis:	Established under the Japan Post Service Act (Law No. 99 of October 21, 2005)
Lines of business:	Postal service business, domestic distribution and delivery business, international cargo transport and agency services for air cargo business, logistics business., etc.

2 Management Philosophy

Management Philosophy

While maintaining universal services for postal businesses, Japan Post Service will create a "network that conscientiously connects people, businesses, and society" by providing services that enable the public to enjoy secure, certain and speedy communications and the benefit of logistics functions.

1. We will continue to provide universal postal service through more efficient business operations.
2. We will expand and upgrade logistics services in Japan and overseas by making extensive use of our resources with the aim of meeting customers' diversifying needs.
3. We will provide services that deliver true customer satisfaction, continually improving service quality and developing new service offerings, based on the perspective of our customers.
4. We will maintain effective corporate internal audits and internal controls and conduct a strict compliance program. We will appropriately disclose information to ensure the transparency of our business activities.
5. We will create opportunities for customers, employees and the general public to lead vibrant and enjoyable lives.

3 Information on Shares

1. Number of Shares

Total shares issued	4,000,000
---------------------	-----------

2. Shareholder

Japan Post Holdings	Condition of holdings	
	Shares owned	Percentage of total issued
	4,000,000	100%

4 Number of Employees

94,110* (as of March 31, 2010)

* Number of regular employees. Includes employees seconded to Japan Post Service Co., Ltd. Excludes employees seconded to other companies and temporary employees.

5 List of Directors, Auditors and Executive Officers

(As of July 1, 2010)

1. Directors

President and COO.....	Shinichi Nabekura
Executive Vice President	Yoshiro Nakajo (Concurrently holds the position of Senior Managing Executive Officer at Japan Post Holdings Co.,Ltd.)
Director (Outside).....	Jiro Saito (Concurrently holds the position of Representative Executive Officer and President & CEO of Japan Post Holdings Co., Ltd.)
Director (Outside).....	Masafumi Yokota (Concurrently holds the position of partner with Corporate Direction Co., Ltd.)

2. Auditors

Takao Ito
Katsuyuki Okada
Yoshio Haibara

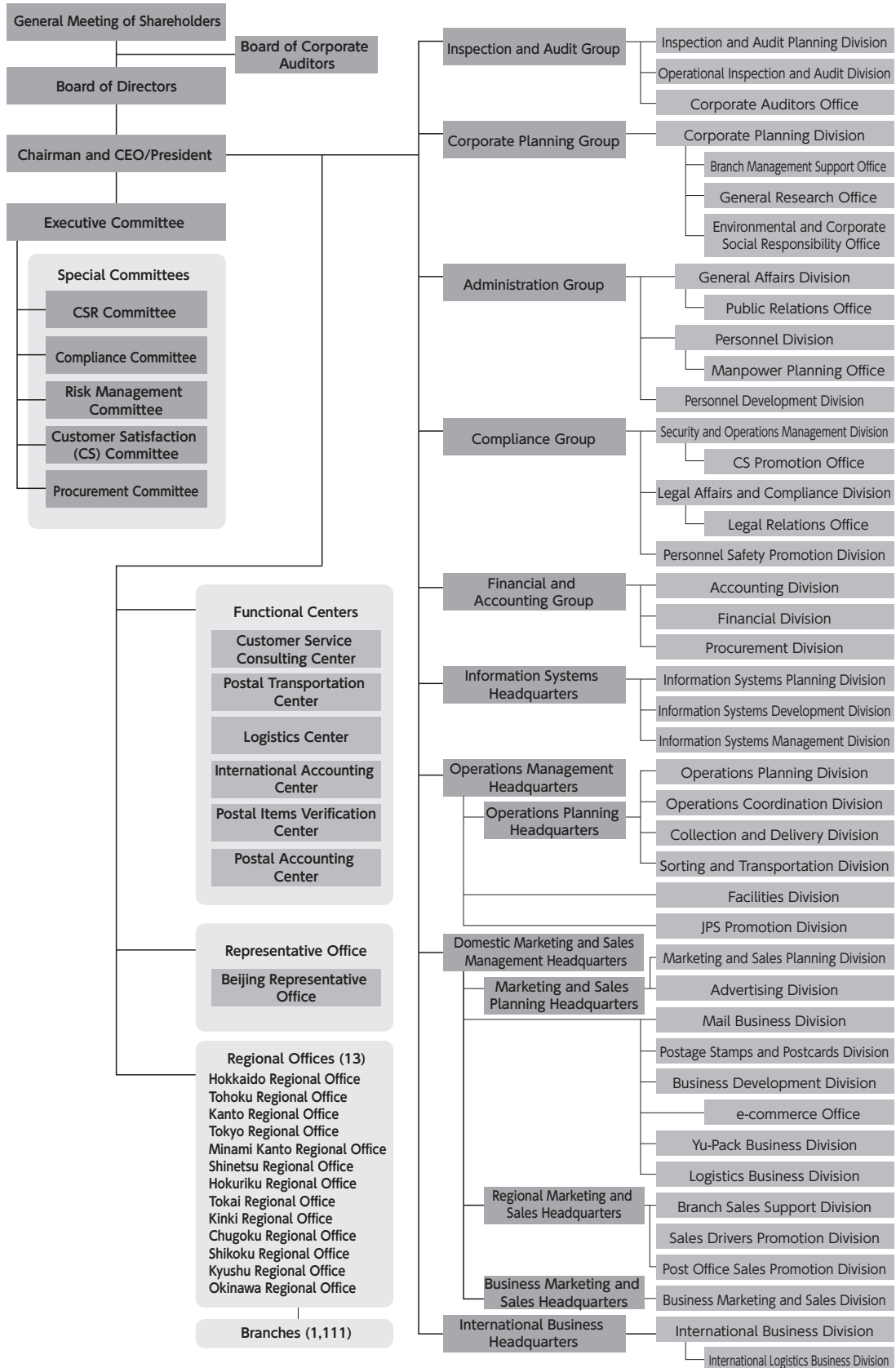
3. Executive Officers

First Executive Officer	Ikuo Shirakane	Executive Officer	Kazuaki Daikaku
Senior Executive Officer	Yuji Uenuma	Executive Officer	Naoki Nakashima
Senior Executive Officer	Seiji Katsuno	Executive Officer	Toshiyuki Hama
Senior Executive Officer	Tameyasu Tsukada	Executive Officer	Osamu Hitani
Senior Executive Officer	Takao Miwa	Executive Officer	Seiki Fukuda
Executive Officer	Chikashi Isayama	Executive Officer	Hideyuki Hokazono
Executive Officer	Toru Inasawa	Executive Officer	Tokio Matsumoto
Executive Officer	Shuji Obu	Executive Officer	Junichiro Miyazaki
Executive Officer	Kimihiko Oku	Executive Officer	Keiichi Yano
Executive Officer	Hidetoshi Kuriyama		

6

Organization Chart

(As of July 1, 2010)



7

Names and Locations of Regional Offices

(As of July 1, 2010)

Name of regional office	Location
Hokkaido	4-3, Kita 2-jo Nishi, Chuo-ku, Sapporo, Hokkaido 060-8797
Tohoku	1-34, Ichiban-cho 1-chome, Aoba-ku, Sendai, Miyagi 980-8797
Kanto	3-1, Shintoshin, Chuo-ku, Saitama, Saitama 330-9797
Tokyo	6-19, Azabudai 1-chome, Minato-ku, Tokyo 106-8797
Minami Kanto	14-2, Takashima 2-chome, Nishi-ku, Yokohama, Kanagawa 220-8998
Shinetsu	801, Kurita, Nagano, Nagano 380-8797
Hokuriku	1-1, Owari-cho 1-chome, Kanazawa, Ishikawa 920-8797
Tokai	2-5, Marunouchi 3-chome, Naka-ku, Nagoya, Aichi 469-8797
Kinki	3-9, Kitahama Higashi, Chuo-ku, Osaka, Osaka 530-8797
Chugoku	19-8, Higashi Hakushima-cho, Naka-ku, Hiroshima, Hiroshima 730-8797
Shikoku	8-5, Miyata-cho, Matsuyama, Ehime 790-8797
Kyushu	1-1, Joto-machi, Kumamoto, Kumamoto 860-8797
Okinawa	26-29, Higashi-machi, Naha, Okinawa 900-8797

8

Number of Offices by Prefecture

(As of March 31, 2010)

Prefecture	Number of offices	Prefecture	Number of offices
Hokkaido	57	Shiga	12
Aomori	10	Kyoto	27
Iwate	15	Osaka	68
Miyagi	18	Hyogo	46
Akita	11	Nara	15
Yamagata	11	Wakayama	12
Fukushima	20	Tottori	4
Ibaraki	30	Shimane	7
Tochigi	17	Okayama	19
Gunma	16	Hiroshima	27
Saitama	51	Yamaguchi	18
Chiba	47	Tokushima	7
Kanagawa	55	Kagawa	10
Yamanashi	11	Ehime	16
Tokyo	89	Kochi	9
Niigata	27	Fukuoka	45
Nagano	24	Saga	8
Toyama	12	Nagasaki	12
Ishikawa	12	Kumamoto	16
Fukui	10	Oita	11
Gifu	19	Miyazaki	6
Shizuoka	31	Kagoshima	11
Aichi	62	Okinawa	14
Mie	16	Nationwide total	1,091

9 Number of Collection and Delivery Centers

Collection and delivery centers: 2,541
(As of March 31, 2010)

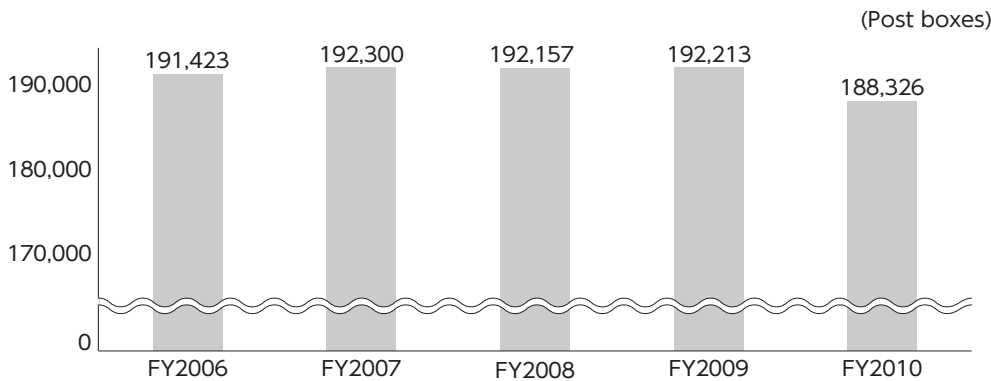
10 Subsidiaries and Affiliated Companies

(As of March 31, 2010)

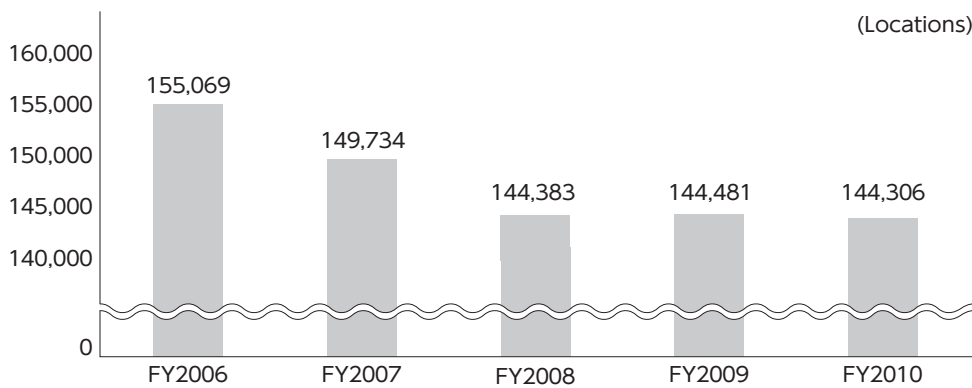
Affiliation	Company name	Location of principal office	Paid-in capital (millions)	Line of business	Date of establishment	Japan Post Service ownership	Ownership of voting shares
Consolidated subsidiaries	JP Logi Service Co., Ltd.	Japan Post Group Osaka Bldg., 3-9 Kitahama Higashi, Chuo-ku, Osaka 540-0031	¥34	Preparation and posting of postal items, parcels and mail items	October 15, 1968	67.6%	67.6%
	JP Biz Mail Co., Ltd.	42-4, Senjuakebono-cho, Adachi-ku, Tokyo 120-0023	¥100	Preparation and posting of postal items	February 1, 2006	51.0%	58.5%
	JP Logistics Partners Co., Ltd.	4-23, Shinsuna 2-chome, Koto-ku, Tokyo 137-8799	¥100	Facilitation of sales campaigns	September 1, 2004	51.0%	51.0%
	JP Media Direct Co., Ltd.	Toranomon NN Bldg. 5F, 21-17, Toranomom 1-chome, Minato-ku, Tokyo 105-0001	¥250	Product development of direct media	February 29, 2008	51.0%	51.0%
	Japan Post Transport Co., Ltd.	4-1 Shiba-koen 2-chome, Minato-ku, Tokyo 105-0011	¥18,250	Truck cargo transportation	November 30, 2007	100.0%	100.0%
	JAPAN POST SANKYU GLOBAL LOGISTICS Co., Ltd.	Hokusui Bldg No. 2, 11-11 Kachidoki 5-chome, Chuo-ku, Tokyo 104-0054	¥300	International air freight forwarding	July 1, 2008	60.0%	60.0%
	JP Express Co., Ltd.*1	Shin-Nikko Bldg West 10F, 10-1 Toranomom 2-chome, Minato-ku, Tokyo 105-0001	¥25,000	Truck cargo transportation	June 2, 2008	86.0%	86.0%
Affiliated companies accounted for under the equity method	ANA & JP Express Co., Ltd.*2	5-2, Higashi Shinbashi 1-chome, Minato-ku, Tokyo 105-7133	¥80	Air cargo transportation	February 1, 2006	33.3%	33.3%

Notes: 1. The company is scheduled to go into liquidation at the end of July 2010.
2. On April 1, 2010, all shares were transferred to All Nippon Airways Co., Ltd.

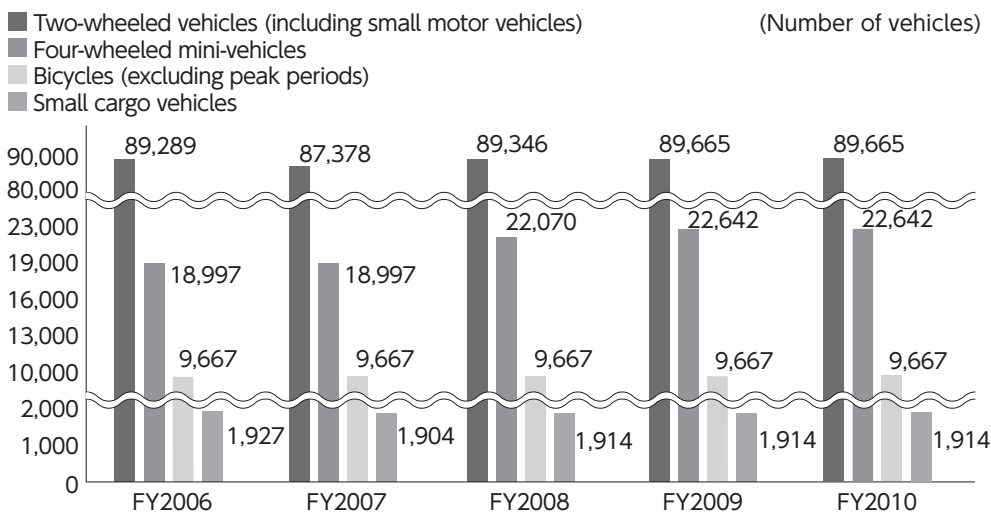
11 Number of Post Boxes



12 Number of Locations Selling Postage Stamps and Revenue Stamps



13 Number of Vehicles Owned



April 1871	Modern postal service established
	Issuance of postal stamps begun
August 1872	Nationwide implementation of the postal services system
December 1885	Ministry of Communications established
February 1887	The 〒 mark adopted as the logo for the Ministry of Communications
October 1892	Parcel post services begun
June 1949	The Ministry of Posts and Telecommunications established
December 1949	Issuance of New Year's lottery postcards begun
January 2001	Postal Service Agency established as part of realignment of government ministries
April 2003	Japan Post established
April 2005	Delivery-area designated mail service (Town Mail) launched
	Delivery-area designated booklet parcels service (Town Plus) launched
January 2006	Japan Post Holdings Co., Ltd. established as a preparation and planning company for privatization
April 2006	POSPACKET service launched
September 2006	Sale of frame stamps with photos introduced
	Realignment of collection and delivery centers (from September 2006 through March 2007)
October 2007	Japan Post Group established
	Japan Post Service Co., Ltd. established
November 2007	First New Year's greeting postcards with donation feature for environmental carbon offset purposes introduced
August 2008	Application for forwarding service via the Internet initiated
	Internet shopping mall newly established for China
December 2008	Ceremonies to launch test demonstrations of environment-friendly vehicles held
February 2009	Commenced an Internet-based Yu-Pack label printing service (Web printing service)
April 2009	Began rolling out ID confirmation delivery service for conveying specific details nationwide
	Implemented a variety of measures, including elimination of commission fees charge on cash-on-delivery Yu-Pack services
February 2010	Web <i>Yubin</i> service is initiated
April 2010	LETTERPACK service is initiated

5. Outline of Japan Post Bank Co., Ltd.

1 Company Outline

Company name (in Japanese):	Kabushiki Kaisha Yucho Ginko
Company name:	JAPAN POST BANK Co., Ltd.
Head office location:	3-2, Kasumigaseki 1-chome, Chiyoda-ku, Tokyo 100-8798, Japan
Telephone:	03-3504-4411 (Japan Post Group main number)
Paid-in capital	¥3,500 billion
Date of establishment:	September 1, 2006 (On October 1, 2007, the name was changed from Yucho Co., Ltd. to Japan Post Bank Co., Ltd.)
Line of business:	Banking
Financial institution code number:	9900

2 Management Philosophy

Management Philosophy

Japan Post Bank is dedicated to serving as “the most convenient and dependable bank in Japan,” with operations that are guided by the needs and wishes of our customers.

Dependability: We will comply with laws regulations and other standards of behavior in order to earn the trust of markets, shareholders and employees and consistently serve as a responsible corporate citizen.

Innovation: We will constantly use innovative ideas to improve our management and business activities in response to input from customers and changes in market conditions.

Efficiency: We will pursue improvements in speed and efficiency in order to be a source of products and services that match our customers' requirements.

Expertise: We will work continually on upgrading expertise in specialized fields with the aim of meeting the high expectations of our customers.

3 Information on Shares

1. Number of Shares

Total shares issued	150,000,000
---------------------	-------------

2. Shareholder

Japan Post Holdings	Condition of holdings	
	Shares owned	Percentage of total issued
	150,000,000	100%

4 Number of Employees

12,060* (as of March 31, 2010)

* Number of regular employees. Includes employees seconded to Japan Post Bank Co., Ltd. Excludes employees seconded to other companies and contract and temporary employees.

5**List of Directors, Executive Officers and Management Committees**

(As of July 1, 2010)

1. Board Members

Director, Chairman	Shigeo Kawa
Director, President & CEO	Yoshiyuki Izawa
Director (Outside)	Jiro Saito
Director (Outside)	Fumio Masada
Director (Outside)	Atsushi Kinebuchi
Director (Outside).....	Tomoyoshi Arita

2. Executive Officers

Executive Vice President	Tomohiro Yonezawa	Executive Officer	Takashi Usuki
Executive Vice President	Sumio Fukushima	Executive Officer	Yoko Makino
Senior Managing Executive Officer	Tomohisa Mase	Executive Officer	Kunihiko Amaha
Senior Managing Executive Officer	Toru Takahashi	Executive Officer	Osami Niihori
Managing Executive Officer	Hiroshi Yamada	Executive Officer	Naoto Misawa
Managing Executive Officer	Riki Mukai	Executive Officer	Masaya Aida
Managing Executive Officer	Satoshi Hoshino	Executive Officer	Masato Wakai
Managing Executive Officer	Susumu Tanaka	Executive Officer	Katsumi Amano
Managing Executive Officer	Masahiro Murashima	Executive Officer	Yoichi Uno
Managing Executive Officer	Hiroichi Shishimi		
Managing Executive Officer	Kazuya Yamaguchi		

3. Nomination Committee

Chairman	Jiro Saito
Member	Shigeo Kawa
Member	Yoshiyuki Izawa
Member	Fumio Masada
Member	Atsushi Kinebuchi

4. Audit Committee

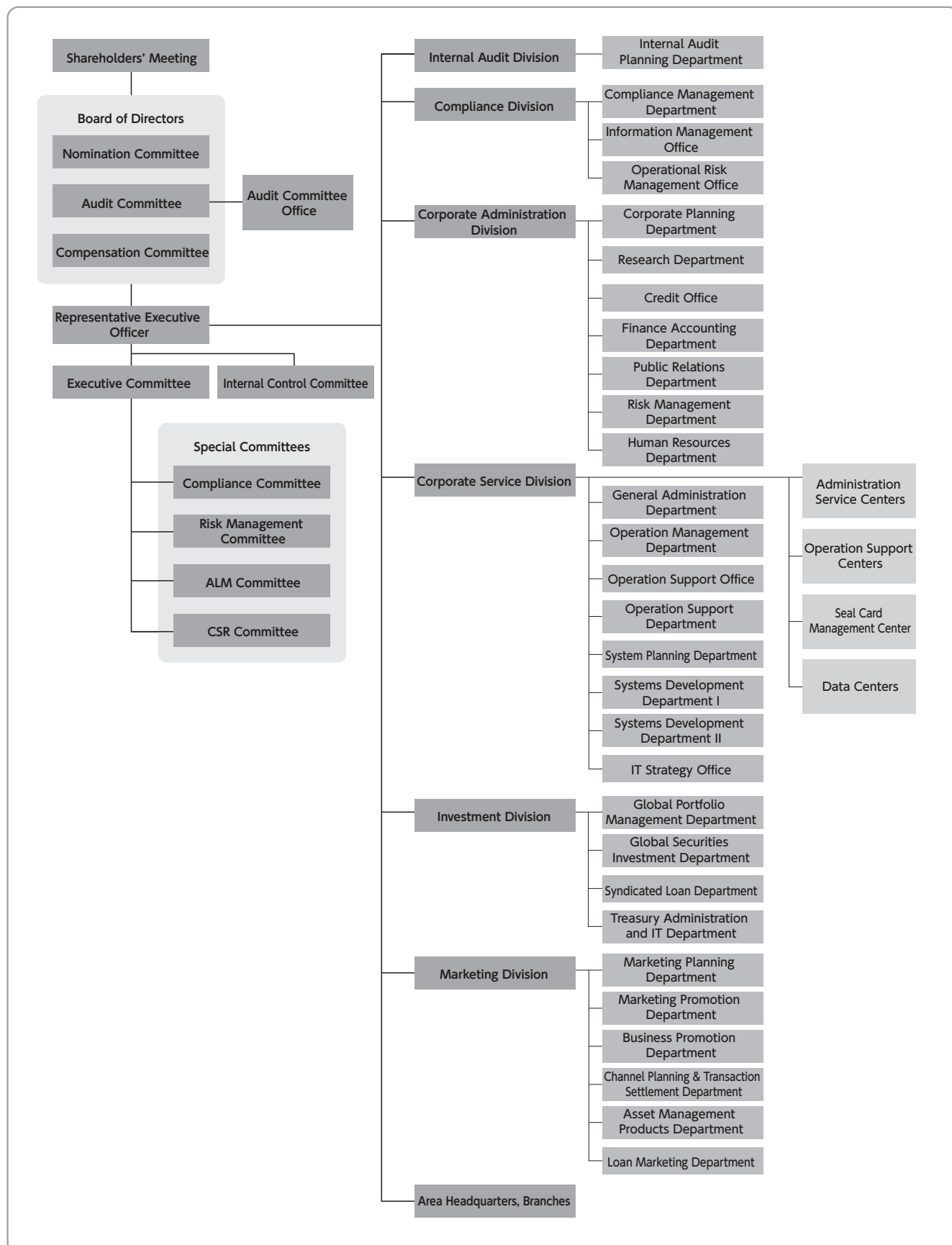
Chairman	Tomoyoshi Arita
Member	Fumio Masada
Member	Atsushi Kinebuchi

5. Compensation Committee

Chairman	Jiro Saito
Member	Shigeo Kawa
Member	Yoshiyuki Izawa
Member	Fumio Masada
Member	Atsushi Kinebuchi

6 Organization Chart

(As of July 1, 2010)



7

Principal Business Locations

Head Office and 234 marketing offices

(As of March 31, 2010)

Name of branch	Location	Telephone numbers
Sapporo Branch	4-3, Kita Nijo Nishi, Chuo-ku, Sapporo, Hokkaido 060-0002	011-214-4300
Sendai Branch	1-3-3, Ichibancho, Aoba-ku, Sendai, Miyagi 980-8711	022-267-8275
Saitama Branch	7-1-12, Bessho, Minami-ku, Saitama, Saitama 336-8799	048-864-7317
Central Branch	Yusen Building, 3-2, Marunouchi 2-chome, Chiyoda-ku, Tokyo 100-8996	03-3284-9618
Nagano Branch	1085-4, Minami Agata-machi, Nagano, Nagano 380-8799	026-226-2550
Kanazawa Branch	1-1, Sanja-machi, Kanazawa, Ishikawa 920-8799	076-224-3844
Nagoya Branch	3-1-10, Otsu, Naka-ku, Nagoya, Aichi 460-8799	052-261-6728
Osaka Branch	Osaka Ekimae 1st Building 2F, 3-1, Umeda 1-chome, Kita-ku, Osaka, Osaka 530-0001	06-6347-8112
Hiroshima Branch	6-36, Moto-machi, Naka-ku, Hiroshima, Hiroshima 730-0011	082-222-1315
Matsuyama Branch	3-5-2, Sanban-cho, Matsuyama, Ehime 790-8799	089-941-0820
Kumamoto Branch	1-1, Joto-machi, Kumamoto, Kumamoto 860-0846	096-328-5163
Naha Branch	1-1-1, Kumoji, Naha, Okinawa 900-0015	098-867-8802

(As of March 31, 2010) (Branches/Post offices)

Prefecture	Head Office/Principal prefectural offices	Sub-branches	Japan Post Bank agents		Total
			Post offices	Contracted post offices	
Hokkaido	1	4	1,210	270	1,485
Aomori	—	2	265	94	361
Iwate	—	1	307	116	424
Miyagi	1	1	361	92	455
Akita	—	1	273	128	402
Yamagata	—	1	288	108	397
Fukushima	—	3	430	110	543
Ibaraki	—	3	462	53	518
Tochigi	—	2	309	43	354
Gunma	—	3	299	36	338
Saitama	1	16	606	16	639
Chiba	—	13	678	34	725
Kanagawa	—	31	723	13	767
Yamanashi	—	1	200	55	256
Tokyo	1	40	1,461	7	1,509
Niigata	—	3	534	133	670
Nagano	1	2	441	192	636
Toyama	—	2	210	76	288
Ishikawa	1	—	253	70	324
Fukui	—	1	209	31	241
Gifu	—	2	354	78	434
Shizuoka	—	5	478	69	552
Aichi	1	13	826	67	907
Mie	—	2	370	77	449
Shiga	—	1	228	30	259
Kyoto	—	4	439	34	477
Osaka	1	23	1,067	30	1,121
Hyogo	—	12	830	120	962
Nara	—	2	239	78	319
Wakayama	—	1	262	54	317
Tottori	—	1	146	94	241
Shimane	—	1	256	115	372
Okayama	—	2	420	101	523
Hiroshima	1	3	580	112	696
Yamaguchi	—	3	353	58	414
Tokushima	—	1	202	29	232
Kagawa	—	2	187	29	218
Ehime	1	1	314	74	390
Kochi	—	1	228	91	320
Fukuoka	—	4	710	92	806
Saga	—	1	165	38	204
Nagasaki	—	2	309	135	446
Kumamoto	1	1	389	176	567
Oita	—	2	306	91	399
Miyazaki	—	1	195	113	309
Kagoshima	—	1	437	279	717
Okinawa	1	—	181	20	202
Total	12	222	19,990	3,961	24,185

Note 1: The number of post offices refers to the number of sales offices and branches handling bank agency operations (including branches).

2: The number of contracted post offices refers to the number of sales offices or branches commissioned to handle bank agency operations by Japan Post Service Co., Ltd. on behalf of Japan Post Bank Co., Ltd.

3: The number of mobile post offices in Aichi and Tokushima prefectures is not included in the above totals.

9 Number of ATMs by Prefecture

(As of March 31, 2010)

Prefecture	Number of ATMs
Hokkaido	1,677
Aomori	314
Iwate	341
Miyagi	497
Akita	311
Yamagata	318
Fukushima	497
Ibaraki	561
Tochigi	369
Gunma	351
Saitama	896
Chiba	940
Kanagawa	1,135
Yamanashi	218
Tokyo	2,511
Niigata	645
Nagano	532
Toyama	251
Ishikawa	319
Fukui	240
Gifu	411
Shizuoka	579
Aichi	1,131
Mie	424

Prefecture	Number of ATMs
Shiga	284
Kyoto	564
Osaka	1,524
Hyogo	1,105
Nara	290
Wakayama	298
Tottori	165
Shimane	289
Okayama	506
Hiroshima	774
Yamaguchi	433
Tokushima	233
Kagawa	245
Ehime	403
Kochi	273
Fukuoka	980
Saga	211
Nagasaki	370
Kumamoto	467
Oita	342
Miyazaki	229
Kagoshima	489
Okinawa	249
Total	26,191

*Number of ATMs of mobile post offices in Aichi and Tokushima prefectures not included.

10 Outline of Affiliated Company

(As of July 1, 2010)

Company name	Location	Paid-in capital (Millions of yen)	Line of business	Date of establishment	Japan Post Bank ownership	Ownership of voting shares
SDP Center Co., Ltd.	Chuo-ku, Tokyo	2,000	Bank agency operations	May 28, 1980	45.0%	45.0%

January 1875	Postal money order service established
May 1875	Postal savings service established
December 1885	Ministry of Communications established
March 1906	Postal <i>giro</i> service established
June 1949	The Ministry of Posts and Telecommunications established
January 2001	Postal Service Agency established as part of realignment of government ministries
April 2003	Japan Post established
September 2006	Yucho Co., Ltd. established as a preparation and planning company for Japan Post Bank Co., Ltd.
September 2007	Implementation plan approved for transfer of operations of Japan Post Agreement reached between Suruga Bank Ltd. and Japan Post Holdings for an operational alliance in the field of consumer lending
October 2007	Japan Post Group established
	Name changed to Japan Post Bank Co., Ltd., and operations started
	Campaign launched to commemorate privatization (featuring a lottery campaign and the elimination of fees for internal transfers of funds through Japan Post Bank ATMs)
December 2007	First preferential interest rate campaign launched
	Approval for new business obtained (liberalization of certain investment products)
January 2008	ATMs available during the first three days of the New Year for the first time
April 2008	New business activities approved: Issuance of credit cards, acting as agent for sale of individual variable annuities and offering intermediary services for mortgage loans and other loans
	Formed business alliance agreement with Suruga Bank for offering loans for individuals, centering on mortgage loans
May 2008	Issuance of JP BANK CARD (VISA, MasterCard) began
	Intermediary services for individual loans launched (50 branches)
	Agent sales of individual variable annuities began (82 branches)
October 2008	"Japan Post Bank Deposits for International Aid" scheme launched
	Expansion of the number of branches handling agent sales of individual variable annuities (from 82 to 164 branches)
January 2009	Transfer services with other financial institutions via the Zengin Data Telecommunication System started
	Issuance of JP BANK JCB card begun
February 2009	Expansion of the number of branches handling agent sales of individual variable annuities (from 164 to 233 branches)
March 2009	Issuance of additional types of postal orders newly started (¥150, ¥250, ¥350, ¥450, ¥750)
April 2009	Handling of <i>Yucho Nenkin Teiki</i> and <i>Yucho Tokimeki Kurabu</i> started
	Handling of <i>Yucho IC Cash Card Suica</i> started
May 2009	Additional service menu added for Yucho Direct (including <i>TEIGAKU</i> and time deposits that serve as collateral and transfers to other financial institutions)
	Minimum purchase for investment trust automatic-accumulation <i>TEIGAKU</i> deposits reduced (from ¥10,000 to ¥5,000)
January 2010	"Japan Post Bank Deposits for International Aid" scheme started through Yucho Direct
	International remittance service from Japan Post Bank accounts expanded
March 2010	Four new investment trust products are launch through <i>Toshin Direct</i>
April 2010	Automatic transfer service started
May 2010	The number of branches dealing with mortgage loans, etc., expanded (from 50 to 82 branches)

6. Outline of Japan Post Insurance Co., Ltd.

1 Company Outline

Company name (in Japanese) :	Kabushiki Kaisha Kanpo Seimei Hoken
Company name:	JAPAN POST INSURANCE Co., Ltd.
Head office location:	3-2, Kasumigaseki 1-chome, Chiyoda-ku, Tokyo 100-8798, Japan
Telephone:	03-3504-4411 (Japan Post Group main number)
Paid-in capital:	¥500 billion
Date of establishment:	September 1, 2006 (The name of the company was changed from Kanpo Co., Ltd. to Japan Post Insurance Co., Ltd., on October 1, 2007.)
Line of business:	Life insurance

2 Management Philosophy

Management Philosophy

Moving forward with our customers while serving as "Japan's most familiar and trusted insurance company"

To translate this philosophy into specific activities, Japan Post Insurance makes the following promises to stakeholders.

Our promise to customers

We value every contact with customers. We will offer products and services that are easy to understand and use. We will supply accurate information so that customers can use these products and services with confidence.

Our promise to shareholders

We will aim to continuously enhance corporate value to fulfill our obligation to shareholders. We will use sound management systems backed by a suitable risk management framework. We will maintain strong lines of communication with shareholders and other investors.

Our promise to society

We will make compliance one of the most important elements of our business activities. We will actively contribute to public health. We will operate in a manner that is kind to people and eco-friendly.

Our promise to business partners

We will build mutually beneficial relationships based on close cooperation and extensive support. We will supply services and improve the quality of those services by working closely with our business partners. We will increase the value of our brand as a member of the Japan Post Group.

Our promise to employees

We will provide employees with a pleasant and rewarding workplace. We will respect each employee and provide equal opportunities to everyone. We will provide many forms of assistance for employees to upgrade their skills.

3 Information on Shares

1. Number of Shares

Total shares issued	20,000,000
---------------------	------------

2. Shareholder

Japan Post Holdings	Condition of holdings	
	Shares owned	Percentage of total issued
	20,000,000	100%

4 Number of Employees

6,293* (as of March 31, 2010)

* Number of regular employees. Includes employees seconded to Japan Post Insurance Co., Ltd. Excludes employees seconded to other companies and contract and temporary employees.

5

List of Directors, Executive Officers and Management Committees

1. Directors

(As of July 1, 2010)

Director and Chairman, CEO.....	Josuke Shindo
Director and President, COO.....	Izumi Yamashita
Director (Outside)	Toshiaki Katsushima (Concurrently holds the position of Certified Public Accountant)
Director (Outside)	Hiroshi Koshida (Concurrently holds the position of Adviser to Daiwa Asset Management Co., Ltd.)
Director (Outside)	Jiro Saito (Concurrently holds the position of Representative Executive Officer and President & CEO of Japan Post Holdings Co., Ltd.)
Director (Outside)	Masaharu Hino (Concurrently holds the position of Attorney-at-Law)

2. Executive Officers

Deputy President	Kazuo Miyazaki	Executive Officer	Kazuhide Kinugawa
Senior Managing Executive Officer	Hisamitsu Gannyo	Executive Officer	Masanori Sato
Senior Managing Executive Officer	Masaro Sugimoto	Executive Officer	Masahiko Sugimori
Senior Managing Executive Officer	Toshihisa Minakata (Concurrently holds the position of Managing Executive Officer of Japan Post Holdings Co., Ltd.)	Executive Officer	Akihiro Takeuchi
Managing Executive Officer	Yukiharu Aoki	Executive Officer	Tomoaki Nara
Managing Executive Officer	Shoji Awakura	Executive Officer	Kiyotaka Fujimoto
Managing Executive Officer	Yoshifumi Ikeda	Executive Officer	Masatoki Hosonuma
Managing Executive Officer	Masaaki Kamohara	Executive Officer	Yoshito Horie
			Masaaki Horigane

3. Nomination Committee

Chairman	Jiro Saito
Member	Josuke Shindo
Member	Izumi Yamashita
Member	Hiroshi Koshida
Member	Masaharu Hino

4. Audit Committee

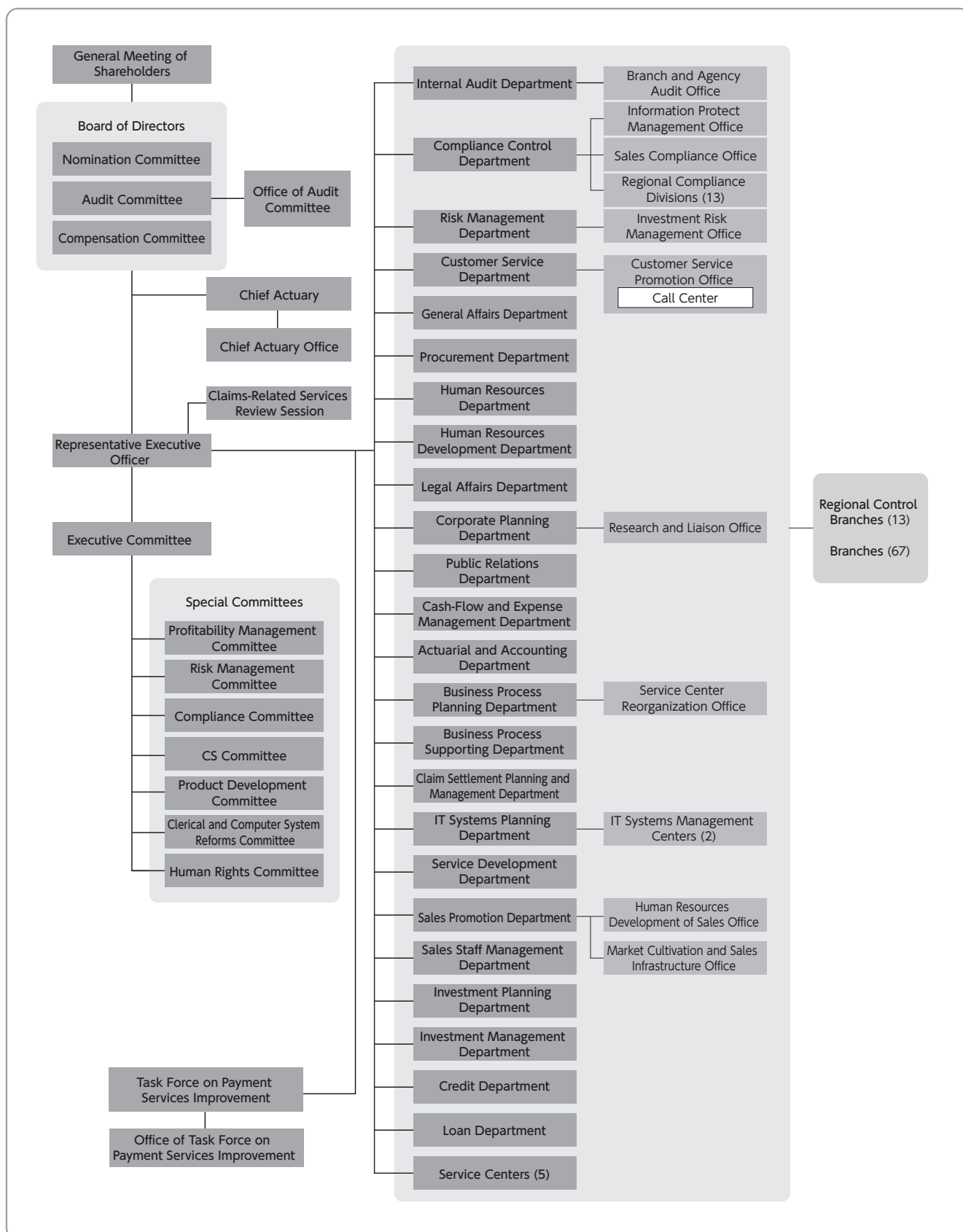
Chairman	Masaharu Hino
Member	Toshiaki Katsushima
Member	Hiroshi Koshida

5. Compensation Committee

Chairman	Jiro Saito
Member	Josuke Shindo
Member	Izumi Yamashita
Member	Toshiaki Katsushima
Member	Hiroshi Koshida

6 Organization Chart

(As of July 1, 2010)



Corporate Data

Financial Data

Other Data

7

Principal Branches (Regional Control Offices)

(As of July 1, 2010)

Name of branch	Location	Telephone number
Sapporo	2-1, Odori Higashi, Chuo-ku, Sapporo, Hokkaido 060-0041	011-221-6375
Sendai	1-1-34, Ichibancho, Aoba-ku, Sendai, Miyagi 980-8797	022-267-7849
Saitama	3-1, Shintoshin, Chuo-ku, Saitama, Saitama 330-9797	048-600-2066
Yokohama	5-3, Nihon Odori, Naka-ku, Yokohama, Kanagawa 231-8799	045-212-3928
Azabu	6-19, Azabudai 1-chome, Minato-ku, Tokyo 106-8799	03-3583-9928
Nagano	801, Kurita, Nagano, Nagano 380-8797	026-231-2342
Kanazawa	1-1, Owari-cho 1-chome, Kanazawa, Ishikawa 920-8797	076-220-3171
Nagoya	2-5, Marunouchi 3-chome, Naka-ku, Nagoya, Aichi 469-8797	052-963-6351
Osaka	3-9, Kitahama Higashi, Chuo-ku, Osaka, Osaka 530-8797	06-6944-5765
Hiroshima	19-8, Higashi Hakushima-cho, Naka-ku, Hiroshima, Hiroshima 730-8797	082-224-5165
Matsuyama	8-5, Miyata-machi, Matsuyama, Ehime 790-8797	089-936-5612
Kumamoto	1-1, Joto-machi, Kumamoto, Kumamoto 860-8797	096-328-5343
Naha	3-3-8, Tsubogawa, Naha, Okinawa 900-8799	098-833-5516

Note: In addition to the above, there are 67 other branches.

October 1916	Postal life insurance services established
October 1926	Postal life annuity business established
June 1949	The Ministry of Posts and Telecommunications established
January 2001	Postal Service Agency established as part of realignment of government ministries
April 2003	Japan Post established
September 2006	Kanpo Co., Ltd. established
October 2007	Japan Post Group established
	Name changed to Japan Post Insurance Co., Ltd.
	Japan Post Insurance operations commenced
December 2007	Approval for new business obtained (liberalization of investment products)
February 2008	Partial alliance with Nippon Life Insurance Company concluded
April 2008	Expanded the scope of financial institutions that can use accounts for making payments for insurance premiums
	New business activities approved (commissioned sales of insurance products for companies, revision of hospitalization riders)
June 2008	Commissioned sales of insurance products for companies begun
July 2008	A new hospitalization rider, <i>Sono hi kara</i> , launched
	Offering of an option that allows a designated third party to request insurance benefits began
	Expanded subscription age limits for ordinary endowment insurance
October 2008	Coverage of the amount equivalent to the cost of acquiring medical certificates started
April 2009	Transfers of various payments including insurance premiums via the introduction of mobile settlement terminals commenced
	Scope of coverage of the amount equivalent to the cost of acquiring medical certificates expanded
July 2009	Branch offices established in all prefectures in line with the establishment of the Nara Branch and Wakayama Branch