

Corporate Data

CONTENTS

1. Outline of Japan Post Holdings Co., Ltd.

1. Company Outline	98
2. Information on Shares	98
1. Number of Shares	98
2. Shareholder	98
3. Information on Rights to Purchase New Shares, etc.	98
3. Number of Employees	99
4. List of Directors, Executive Officers and Management Committees	99
1. Directors	99
2. Executive Officers	99
3. Nomination Committee	100
4. Audit Committee	100
5. Compensation Committee	100
5. Organization Chart	101
6. Principal Subsidiaries and Affiliates of Japan Post Holdings	102
7. Museums and Libraries	103
8. Japan Post Teishin Hospitals	103
9. Hotels	104
1. <i>Kampo no Yado</i> Inns	104
2. <i>Kampo no Sato</i> Inns	106
3. <i>Rafre</i> Saitama and Other Facilities	106
10. History of the Japan Post Group	107

2. Outline of Japan Post Network Co., Ltd.

1. Company Outline	108
2. Information on Shares	108
1. Number of Shares	108
2. Shareholder	108
3. Number of Employees	109
4. List of Directors, Auditors and Executive Officers	109
1. Directors	109
2. Auditors	109
3. Executive Officers	109
5. Organization Chart	110
6. Names and Locations of Regional Offices	111
7. Training Institutes and Internal Audit Offices	111
8. Post Offices by Prefecture	112
9. Outline of Subsidiary	113
10. History of Japan Post Network	114

3. Outline of Japan Post Service Co., Ltd.

1. Company Outline	115
2. Information on Shares	115
1. Number of Shares	115
2. Shareholder	115
3. Number of Employees	116
4. List of Directors, Auditors and Executive Officers	116
1. Directors	116
2. Auditors	116
3. Executive Officers	116

5. Organization Chart	117
6. Names and Locations of Regional Offices	118
7. Number of Offices by Prefecture	118
8. Number of Collection and Delivery Centers	119
9. Subsidiaries and Affiliated Companies	119
10. Number of Post Boxes	120
11. Number of Locations Selling Postage Stamps and Revenue Stamps	120
12. Number of Vehicles Owned	120
13. History of Japan's Postal Services Business and Japan Post Service	121

4. Outline of Japan Post Bank Co., Ltd.

1. Company Outline	122
2. Information on Shares	122
1. Number of Shares	122
2. Shareholder	122
3. Number of Employees	122
4. List of Directors, Executive Officers and Management Committees	123
1. Directors	123
2. Executive Officers	123
3. Nomination Committee	123
4. Audit Committee	123
5. Compensation Committee	123
5. Organization Chart	124
6. Principal Business Locations	125
7. Japan Post Bank Offices by Prefecture	126
8. Number of ATMs by Prefecture	127
9. Outline of Affiliated Company	127
10. History of Japan's Postal Savings and Japan Post Bank	128

5. Outline of Japan Post Insurance Co., Ltd.

1. Company Outline	129
2. Information on Shares	129
1. Number of Shares	129
2. Shareholder	129
3. Number of Employees	129
4. List of Directors, Executive Officers and Management Committees	130
1. Directors	130
2. Executive Officers	130
3. Nomination Committee	130
4. Audit Committee	130
5. Compensation Committee	130
5. Organization Chart	131
6. Principal Branches (Regional Control Offices)	132
7. History of Japan's Postal Life Insurance and Japan Post Insurance	133

1. Outline of Japan Post Holdings Co., Ltd.

1 Company Outline

Company name (in Japanese):	Nippon Yusei Kabushiki Kaisha
Company name:	JAPAN POST HOLDINGS Co., Ltd.
Head office location:	3-2, Kasumigaseki 1-chome, Chiyoda-ku, Tokyo 100-8798, Japan
Telephone:	03-3504-4411 (Japan Post Group main number)
Paid-in capital:	¥3,500.0 billion
Date of establishment:	January 23, 2006
Legal basis:	Established under the Japan Post Holdings Co., Ltd. Act (Law No. 98 of October 21, 2005)
Lines of business:	Management of Group companies
Principal business locations:	Human Affairs and Accounting Consolidating Center: 1; Health Management Administration Center: 1; Health Management Offices: 48; Facility Management Centers: 7; hospitals: 14; hotels: 71; postal museum: 1

2 Information on Shares

1. Number of Shares

Authorized number of shares	600,000,000
Total shares issued	150,000,000
Number of shareholders as of the end of fiscal 2009	One

2. Shareholder

Minister of Finance	Condition of holdings	
	Shares owned	Percentage of total issued
	150,000,000	100%

3. Information on Rights to Purchase New Shares, etc.

None outstanding

3 Number of Employees

3,332* (as of March 31, 2009)

* Number of regular employees. Includes employees seconded to Japan Post Holdings Co., Ltd. Excludes employees seconded to other companies and temporary employees.

4 List of Directors, Executive Officers and Management Committees

(As of June 29, 2009)

1. Directors

President & CEO (Representative Executive Officer)	Yoshifumi Nishikawa	(Concurrently holds the positions of Director of Japan Post Network Co., Ltd., Director of Japan Post Service Co., Ltd. and Director of Japan Post Bank Co., Ltd.)
Deputy President (Representative Executive Officer)	Shokichi Takagi	(Concurrently holds the position of President & COO of Japan Post Bank Co., Ltd.)
Director (Outside)	Jiro Ushio	(Concurrently holds the position of Representative Director and Chairman of Ushio Inc.)
Director (Outside)	Hiroshi Okuda	(Concurrently holds the position of Senior Advisor of Toyota Motor Corporation)
Director (Outside)	Takashi Nishioka	(Concurrently holds the position of Senior Advisor of Mitsubishi Heavy Industries, Ltd.)
Director (Outside)	Uichiro Niwa	(Concurrently holds the position of Director and Chairman of ITOCHU Corporation)
Director (Outside)	Reiko Okutani	(Concurrently holds the position of Representative Director and President of The R Co., Ltd.)
Director (Outside)	Hitomi Takahashi	(Concurrently holds the position of Senior Partner at Seinan & Co.)
Director (Outside)	Kazuhiko Shimokobe	(Concurrently holds the position of Attorney-at-Law)

2. Executive Officers

Deputy President and Representative Executive Officer (Concurrently holds the position of President of Japan Post Service Co., Ltd.)	Hiroaki Dan	Managing Executive Officer	Yoshiaki Senoh
Deputy President (Concurrently holds the position of President of Japan Post Network Co., Ltd.)	Motoyuki Terasaka	Managing Executive Officer	Kenichiro Hamada
Deputy President (Concurrently holds the position of Director and COO of Japan Post Insurance Co., Ltd.)	Izumi Yamashita	Managing Executive Officer	Kunio Tanigaki
Senior Managing Executive Officer (Concurrently holds the position of Director of Japan Post Insurance Co., Ltd.)	Kunio Yokoyama	Executive Officer	Yoshihiro Chiba
Senior Managing Executive Officer (Concurrently holds the position of Executive Vice President of Japan Post Bank Co., Ltd.)	Tomohiro Yonezawa	Executive Officer	Hiroyuki Shimizu (Concurrently holds the position of Executive Officer of Japan Post Network Co., Ltd.)
Senior Managing Executive Officer	Hideharu Sasaki	Executive Officer	Kazuhiro Ito
Senior Managing Executive Officer	Eisuke Fujimoto	Executive Officer	Yoshiki Terasaki
Senior Managing Executive Officer (Concurrently holds the position of First Executive Officer of Japan Post Service Co., Ltd.)	Toshiro Ito	Executive Officer	Tetsuhiko Yoshizawa
			Hisao Yamano
			Noboru Ichikura

3. Nomination Committee

Chairperson	Hiroshi Okuda
Members	Yoshifumi Nishikawa Shokichi Takagi Jiro Ushio Uichiro Niwa

4. Audit Committee

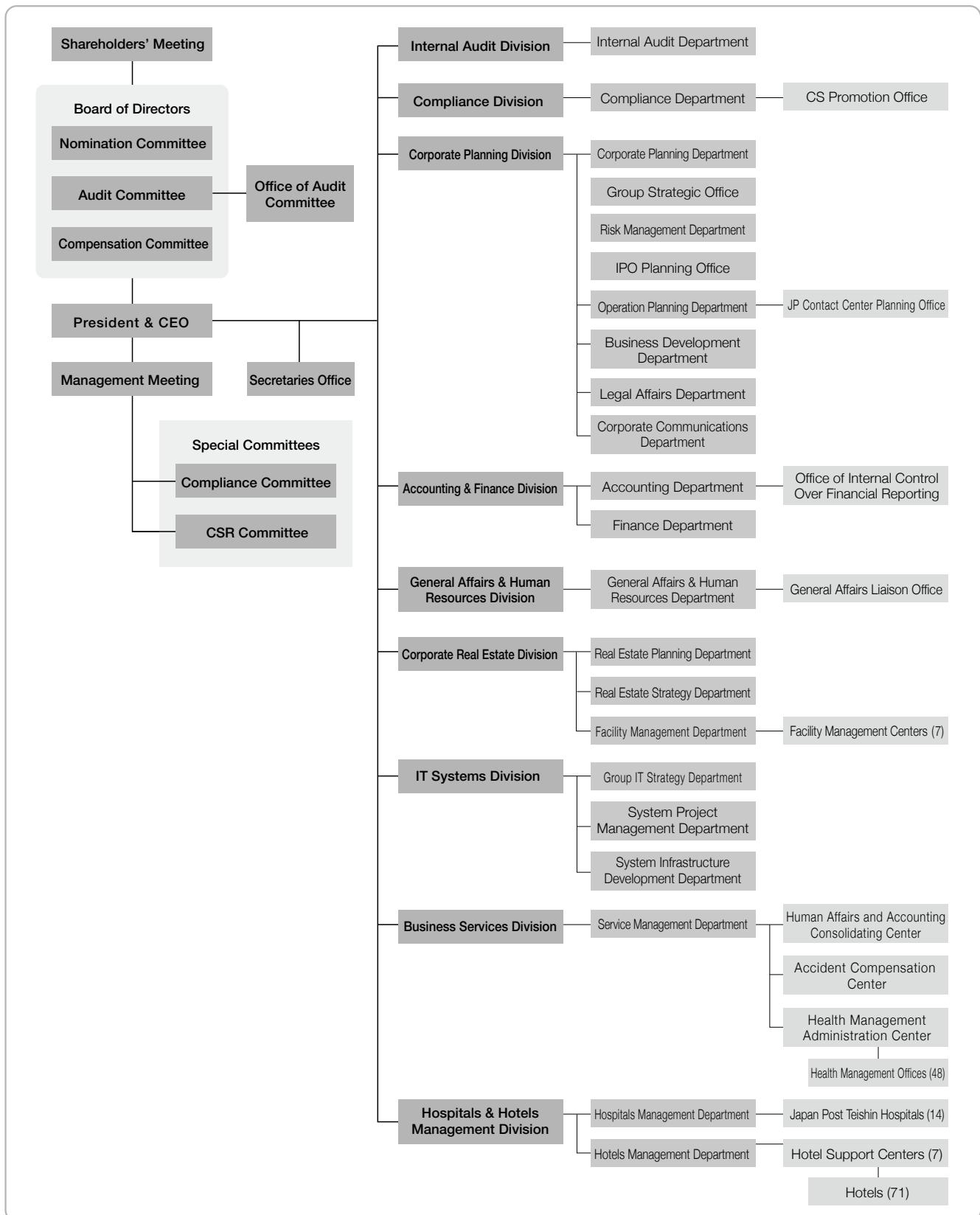
Chairperson	Hitomi Takahashi
Members	Reiko Okutani Kazuhiko Shimokobe

5. Compensation Committee

Chairperson	Hiroshi Okuda
Members	Yoshifumi Nishikawa Shokichi Takagi Takashi Nishioka Reiko Okutani

5 Organization Chart

(As of July 1, 2009)



6 Principal Subsidiaries and Affiliates of Japan Post Holdings

(As of March 31, 2009)

Affiliation	Company name	Location	Issued capital (millions)	Main business	Date of establishment	Percentage ownership of voting rights
Consolidated subsidiaries	Japan Post Network Co., Ltd.	Chiyoda-ku, Tokyo	¥100,000	Post office counter-related business	October 1, 2007	100.0% (0.0%)
	Japan Post Service Co., Ltd.	Chiyoda-ku, Tokyo	¥100,000	Postal service business, freight distribution business	October 1, 2007	100.0% (0.0%)
	Japan Post Bank Co., Ltd.	Chiyoda-ku, Tokyo	¥3,500,000	Banking business	September 1, 2006	100.0% (0.0%)
	Japan Post Insurance Co., Ltd.	Chiyoda-ku, Tokyo	¥500,000	Life insurance business	September 1, 2006	100.0% (0.0%)
	Japan Post Staff Co., Ltd.	Chuo-ku, Tokyo	¥90	Contract staffing service	July 3, 2007	100.0% (0.0%)
	Yusei Challenged Co., Ltd.	Setagaya-ku, Tokyo	¥5	Office cleaning	November 20, 2007	100.0% (0.0%)
	Post Office Business Support Co., Ltd.	Koto-ku, Tokyo	¥100	Receipt and forwarding of orders for catalog merchandise	September 11, 2007	100.0% (100.0%)
	JP Logi Service Co., Ltd.	Chuo-ku, Osaka	¥34	Preparation and posting of postal items, parcels, and mail items	October 15, 1968	67.6% (67.6%)
	JP Biz Mail Co., Ltd.	Adachi-ku, Tokyo	¥100	Preparation and posting of postal items	February 1, 2006	58.5% (58.5%)
	DM Leading Co., Ltd.	Kawasaki-ku, Kawasaki, Kanagawa	¥50	Preparation and posting of postal items	November 1, 2004	100.0% (100.0%)
	JP Logistics Partners Co., Ltd.	Koto-ku, Tokyo	¥100	Facilitation of sales campaigns	September 1, 2004	51.0% (51.0%)
	JP Media Direct Co., Ltd.	Minato-ku, Tokyo	¥250	Product development of direct media	February 29, 2008	51.0% (51.0%)
	JAPAN POST SANKYU GLOBAL LOGISTICS Co., Ltd.	Chuo-ku, Tokyo	¥300	Truck cargo transportation	July 1, 2008	60.0% (60.0%)
	Japan Post Transport Co., Ltd.	Minato-ku, Tokyo	¥18,250	Truck cargo transportation	November 30, 2007	100.0% (100.0%)
Affiliated companies accounted for under the equity method	ANA & JP Express Co., Ltd.	Minato-ku, Tokyo	¥80	Air cargo transportation	February 1, 2006	33.3% (33.3%)
	JP Express Co., Ltd.	Minato-ku, Tokyo	¥300	Truck cargo transportation	June 2, 2008	50.0% (50.0%)
	SDP Center Co., Ltd.	Chuo-ku, Tokyo	¥2,000	Bank agency operations	May 28, 1980	45.0% (45.0%)

Note: The figures in parentheses in the column showing percentage ownership of voting rights indicate the percentage of indirect ownership through subsidiaries.

7 Museums and Libraries

The Japan Post Group has museums and libraries relating to its activities, including Tei-Park (Communications Museum), which is Japan's only comprehensive museum related to postal services and telecommunications.

Name of facility	Address	Telephone number
Tei-Park (Communications Museum)	3-1, Otemachi 2-chome, Chiyoda-ku, Tokyo 100-0004	03-3244-6811
Maejima Memorial Museum	1317-1, Shinmeigae, Shimo Ikebe, Joetsu, Niigata 943-0119	025-524-5550
Sakano Memorial Museum	1039-1, Kaidani, Okayama, Okayama 701-1144	086-294-5851
Postal Museum in Meiji-mura (Ujiyamada Post Office)	Museum Meiji-mura, 1 Uchiyama, Inuyama, Aichi 484-0000	0568-67-0314
Atomic Bomb Information Museum, located in the former Outpatient Wing of the Japan Post Hiroshima Teishin Hospital	19-8, Higashi Hakushima-cho, Naka-ku, Hiroshima, Hiroshima 730-0004	Note
Okinawa Postal Museum	3-8, Tsubokawa 3-chome, Naha, Okinawa 900-8799	098-854-0255

Note: Persons wishing to visit the Atomic Bomb Information Museum located in the former Outpatient Wing of the Japan Post Hiroshima Teishin Hospital should contact the General Affairs section of the Japan Post Hiroshima Teishin Hospital at 082-224-5350 (Japanese only).

8 Japan Post Teishin Hospitals

Name of facility	Location	Telephone number
Japan Post Sapporo Teishin Hospital	1-5-1, Kawazoe 14-jo, Minami-ku, Sapporo, Hokkaido 005-8798	011-571-5103
Japan Post Sendai Teishin Hospital	5-1, Chuo 4-chome, Aoba-ku, Sendai, Miyagi 980-8798	022-268-3150
Japan Post Yokohama Teishin Hospital	13-10, Nishi Kanagawa 1-chome, Kanagawa-ku, Yokohama, Kanagawa 221-8798	045-321-4783
Japan Post Tokyo Teishin Hospital	14-23, Fujimi 2-chome, Chiyoda-ku, Tokyo 102-8798	03-5214-7111
Japan Post Niigata Teishin Hospital	2-8, Yachiyo 2-chome, Chuo-ku, Niigata, Niigata 950-8798	025-244-4700
Japan Post Toyama Teishin Hospital	2-29, Kashima-machi 2-chome, Toyama, Toyama 930-8798	076-423-7727
Japan Post Nagoya Teishin Hospital	2-5, Izumi 2-chome, Higashi-ku, Nagoya, Aichi 461-8798	052-932-7152
Japan Post Kyoto Teishin Hospital	109, Nishi Rokkakuchō, Shinmachi Nishiiru, Rokkakutori, Nakagyo-ku, Kyoto, Kyoto 604-8798	075-241-7167
Japan Post Osaka kita Teishin Hospital	1-6, Nakazaki 1-chome, Kita-ku, Osaka, Osaka 530-8798	06-6361-2071
Japan Post Kobe Teishin Hospital	2-43, Kami-tsutsui Dori 6-chome, Chuo-ku, Kobe, Hyogo 651-8798	078-232-7516
Japan Post Hiroshima Teishin Hospital	19-16, Higashi Hakushima-cho, Naka-ku, Hiroshima, Hiroshima 730-8798	082-224-5350
Japan Post Tokushima Teishin Hospital	19-2, Iga-cho 3-chome, Tokushima, Tokushima 770-8798	088-623-8611
Japan Post Fukuoka Teishin Hospital	6-11, Yakuin 2-chome, Chuo-ku, Fukuoka, Fukuoka 810-8798	092-741-0300
Japan Post Kagoshima Teishin Hospital	12-1, Shimo Ishiki 1-chome, Kagoshima, Kagoshima 890-8798	099-223-6013

9 Hotels

The Japan Post Group owns the following hotels.

*Number of hotels as of March 31, 2009.

1. Kanpo no Yado Inns

Name of facility	Location	Telephone number	Number of rooms	Conclusion of disaster and accident prevention agreements
Otaru	2-670, Asarigawa Onsen, Otaru, Hokkaido 047-0192	0134-54-8511	31	○
Tokachigawa	9-1, Kita, Tokachigawa Onsen, Otohuke-cho, Katou-gun, Hokkaido 080-0262	0155-46-2141	43	○
Ichinoseki	147-5, Horyu, Genbi-cho, Ichinoseki, Iwate 021-0101	0191-29-2131	55	○
Yokote	1-20, Shirotsuke, Mutsunari, Yokote, Akita 013-0008	0182-32-5055	42	○
Matsushima	89-53, Minami-akasaki, Nobiru, Higashi-matsushima, Miyagi 981-0411	0225-88-3411	54	○
Koriyama	3-198, Atami, Atami-machi, Koriyama, Fukushima 963-1380	024-984-3511	36	
Iwaki	60, Shibazaki, Tairafujima, Iwaki, Fukushima 970-0103	0246-39-2670	59	○
Oarai	7986-2, Isohama-cho, Oarai-machi, Higashi-ibaraki-gun, Ibaraki 311-1301	029-267-3191	52	○
Itako	1830-1, Mizuhara, Itako, Ibaraki 311-2404	0299-67-5611	58	○
Shiobara	1256, Shiobara, Nasushiobara, Tochigi 329-2921	0287-32-2845	39	○
Tochigi Kisuregawa Onsen	5296-1, Kisuregawa, Sakura, Tochigi 329-1412	028-686-2822	53	○
Kusatsu	464-1051, Kusatsu, Kusatsu-machi, Agatsuma-gun, Gunma 377-1794	0279-88-5761	48	○
Isobe	22, Gobara, Annaka, Gunma 379-0135	027-385-6321	51	○
Yorii	2267, Sueno, Yorii-machi, Osato-gun, Saitama 369-1205	048-581-1165	51	○
Kamogawa	1137, Nishi-cho, Kamogawa, Chiba 296-0043	04-7092-1231	53	○
Asahi	2280-1, Nittama, Asahi, Chiba 289-2525	0479-63-2161	75	○
Katsuura	2183-5, Ubara, Katsuura, Chiba 299-5243	0470-76-3011	50	○
Ome	668-2, Komaki-cho 3-chome, Ome, Tokyo 198-0053	0428-23-1171	52	○
Hakone	159, Motohakone, Hakone-machi, Ashigarashimo-gun, Kanagawa 250-0522	0460-84-9126	29	
Isawa	348-1, Matsumoto, Isawa-cho, Fuefuki, Yamanashi 406-0021	055-262-3755	54	○
Kashiwazaki	2-15, Kotobuki-cho, Kashiwazaki, Niigata 945-0846	-	-	-
Suwa	15-16, Owa 2-chome, Suwa, Nagano 392-0001	0266-52-1551	36	○
Atami (Main Building)	12-3, Minaguchi-cho 2-chome, Atami, Shizuoka 413-0016	0557-83-6111	159	
Atami (Annex)	13-77, Minaguchi-cho 2-chome, Atami, Shizuoka 413-0016	0557-83-6111	45	
Shuzenji	1257-4, Kumasaka, Izu, Shizuoka 410-2411	0558-72-3151	32	○
Izukogen	1104-5, Yawatano, Ito, Shizuoka 413-0232	0557-51-4400	59	○
Toyama	5691-2, Hane, Fuchu-machi, Toyama, Toyama 939-2694	076-469-3135	40	○
Yamashiro	32-1, Onsen-dori, Yamashiro Onsen, Kaga, Ishikawa 922-0254	0761-77-1600	46	○
Fukui	43-17, Fuchi-machi, Fukui, Fukui 918-8026	0776-36-5793	33	○
Yaizu	1375-2, Hamatome, Yaizu, Shizuoka 425-8533	054-627-0661	43	○
Hamanako-Mikkabi	2977-2, Tsuzuki, Mikkabi-cho, Kita-ku, Hamamatsu, Shizuoka 431-1496	053-526-1201	41	○

Name of facility	Location	Telephone number	Number of rooms	Conclusion of disaster and accident prevention agreements
Sangane	1-221, Nyukaizan, Higashi hazu, Hazu-cho, Hazu-gun, Aichi 444-0701	0563-62-2650	32	○
Chita-Mihama	39, Suhara, Okuda, Mihama-cho, Chita-gun, Aichi 470-3233	0569-87-1511	42	○
Ena	2709, Oi-cho, Ena, Gifu 509-7201	0573-26-4600	54	○
Gifu-Hashima	1041, Umaminami, Kuwabara-cho, Hashima, Gifu 501-6323	058-398-2631	40	○
Toba	1200-7, Arashima-cho, Toba, Mie 517-0021	0599-25-4101	60	○
Kumano	1020-7, Ido-cho, Kumano, Mie 519-4324	0597-89-4411	27	○
Hikone	3759, Matsubara-cho, Hikone, Shiga 522-0002	0749-22-8090	41	○
Maizuru	224-5, Ueyasu, Maizuru, Kyoto 624-0912	-	-	-
Tondabayashi	880-1, Ryusen, Tondabayashi, Osaka 584-0053	0721-33-0700	43	○
Yamatoheguri	16-1, kamisho 2-chome, Heguri-cho, Ikoma-gun, Nara 636-0905	0745-45-0351	34	○
Nara	9-1, Nijo-cho 3-chome, Nara, Nara 630-8002	0742-33-2351	40	○
Shirahama	1688-2, Shirahama-cho, Nishimuro-gun, Wakayama 649-2211	0739-42-2980	31	○
Kii-Tanabe	24-1, Mera, Tanabe, Wakayama 646-8501	0739-24-2900	52	○
Arima	1617-1, Arima-cho, Kita-ku, Kobe, Hyogo 651-1401	078-904-0951	53	○
Ako	883-1, Misaki, Ako, Hyogo 678-0215	0791-43-7501	50	○
Awajishima	824, Toshima, Awaji, Hyogo 656-1711	0799-82-1073	40	○
Kaike	1-7, Kaikeshinden 3-chome, Yonago, Tottori 683-0002	0859-33-4421	35	○
Mimasaka Yunogo	674-7, Nakayama, Mimasaka, Okayama 707-0061	0868-72-5551	35	○
Takehara	442-2, Nishino-cho, Takehara, Hiroshima 725-0002	0846-29-0141	40	○
Hikari	31-1, Murozumi-Higashinosho, Hikari, Yamaguchi 743-0005	0833-78-1515	40	○
Yuda	1-42, Kanda-cho, Yamaguchi, Yamaguchi 753-0064	083-922-5226	40	○
Kanonji	1101-4, Ikenoshiri-cho, Kanonji, Kagawa 768-0031	0875-27-6161	39	○
Sakaide	2048-91, Takaya-cho, Sakaide, Kagawa 762-0017	0877-47-0531	41	○
Tokushima	3-70, Nakatsuyama, Hachiman-cho, Tokushima, Tokushima 770-8071	088-625-1255	46	○
Dogo	3-1, Mizonobe-machi, Matsuyama, Ehime 791-0101	089-977-0460	32	○
Ino	1569, Hakawa, Ino-cho, Agawa-gun, Kochi 781-2128	088-892-1580	52	○
Kitakyushu	2829, Arige, Wakamatsu-ku, Kitakyushu, Fukuoka 808-0123	093-741-1335	50	○
Yanagawa	10-1, Yashiro-machi, Yanagawa, Fukuoka 832-0057	0944-72-6295	40	○
Shimabara	8362-3, Hakusan-machi, Shimabara, Nagasaki 855-0824	-	-	-
Beppu	457, Tsurumi, Beppu, Oita 874-0844	0977-66-1271	49	○
Hita	685-6, Nakanoshima-machi, Hita, Oita 877-0074	0973-24-0811	53	○
Yamaga	2450, Shijiki, Yamaga, Kumamoto 861-0542	0968-43-5121	28	○
Aso	5936, Miyaji, Ichinomiya-machi, Aso, Kumamoto 869-2612	0967-22-1122	66	○
Nichinan	2228-1, Hoshikura, Nichinan, Miyazaki 889-2533	0987-22-5171	46	○
Recreation Center in Naha	9-15, Minato-machi 2-chome, naha, Okinawa 900-0001	098-862-4740	76	○

2. Kanpo no Sato Inns

Name of facility	Location	Telephone number	Number of rooms	Conclusion of disaster and accident prevention agreements
Sakata	17-26, Iimoriyama 3-chome, Sakata, Yamagata 998-8588	0234-31-4126	39	○
Hakusanoguchi	43-3, U, Seto, Hakusan, Ishikawa 920-2331	076-256-8080	43	○
Shobara	281-1, Shinjo-cho, Shobara, Hiroshima	0824-73-1800	62	○
Usa	1571-1, Kawabe, Usa, Oita 879-0452	0978-37-2288	32	○

3. Rafre Saitama and Other Facilities

Name of facility	Location	Telephone number	Number of rooms	Conclusion of disaster and accident prevention agreements
Rafre Saitama	3-2, Shintoshin, Chuo-ku, Saitama, Saitama 330-0081	048-601-1111	187	○
U-Port Recreation Center in Setagaya	17-1, Kamata 2-chome, Setagaya, Tokyo 157-0077	03-3709-0161	–	○

Note 1: For more details, contact the hotels directly or call the customer service center of *Kanpo no Yado* inns at 0120-715294 (weekdays: 9:30 to 18:15).

2: *Kanpo no Yado* inns located in Kashiwazaki, Maizuru and Shimabara are temporary closed.

3: Rooms for long-stay customers at *Kanpo no Yado* inns (former welfare facilities for elderly policyholders) have been closed as of March 31, 2009.

10 History of the Japan Post Group

April 1871	Modern postal service introduced
January 1875	Government mail offices and mail handling offices renamed post offices
	Postal money order service established
May 1875	Postal savings service inaugurated
December 1885	Ministry of Communications established
March 1906	Postal <i>giro</i> service inaugurated
October 1916	Postal life insurance services inaugurated
June 1949	The Ministry of Posts and Telecommunications established
January 2001	In accordance with the central government reform, Ministry of Public Management, Home Affairs and Posts and Telecommunications (MPHPT) and Postal Service Agency established
April 2003	Japan Post established (and integrated with the Postal Life Insurance Welfare Corporation)
October 2005	Postal Services Privatization Act passed
January 2006	Japan Post Holdings Co., Ltd. established as a preparation and planning company for privatization
October 2007	Japan Post Group (Japan Post Holdings Co., Ltd., Japan Post Network Co., Ltd., Japan Post Service Co., Ltd., Japan Post Bank Co., Ltd. and Japan Post Insurance Co., Ltd.) established
	Basic agreement for integrating parcel delivery operations with Nippon Express Co., Ltd. concluded
February 2008	Agreement to establish a comprehensive alliance with LAWSON, INC. signed
May 2008	Japan Post Forest program launched
June 2008	Redevelopment plan of Tokyo Central Post Office announced
October 2008	"Write a letter to yourself in the future" project implemented (until January 2009)
December 2008	Development plan of Osaka western district, including Osaka Central Post Office, announced
	Basic concept of city development in 1-banchi, 1-chome area of Nagoya Station announced

2. Outline of Japan Post Network Co., Ltd.

1 Company Outline

Company name (in Japanese):	Yubinkyoku Kabushiki Kaisha
Company name:	JAPAN POST NETWORK Co., Ltd.
Head office location:	3-2, Kasumigaseki 1-chome, Chiyoda-ku, Tokyo 100-8798, Japan
Telephone:	03-3504-4411 (Japan Post Group main number)
Paid-in capital:	¥100 billion
Date of establishment:	October 1, 2007
Legal basis:	Established under the Japan Post Network Act (Law No. 100 of October 21, 2005)
Lines of business:	Postal counter operations for regular mail, parcels and other items; sales of revenue stamps; bank agency services; intermediary services for financial products; solicitation of life and non-life insurance; real estate business; merchandise sales; and operations consigned by local government entities

2 Information on Shares

1. Number of Shares

Total shares issued	4,000,000
----------------------------	-----------

2. Shareholder

Japan Post Holdings	Condition of holdings	
	Shares owned	Percentage of total issued
	4,000,000	100%

3 Number of Employees

112,726* (as of March 31, 2009)

* Number of regular employees. Includes employees seconded to Japan Post Network Co., Ltd. Excludes employees seconded to other companies and temporary employees.

4 List of Directors, Auditors and Executive Officers

(As of June 24, 2009)

1. Directors

Chairman & CEO Shigeo Kawa

President Motoyuki Terasaka (Concurrently holds the position of Deputy President of Japan Post Holdings Co., Ltd.)

Executive Vice President..... Takamasa Mori

Director (Outside)..... Hidekazu Inoue (Concurrently holds the position of Senior Adviser at Nippon Telegraph and Telephone East Corporation)

Director (Outside)..... Seisuke Ueshima (Formerly held the position of Chairman of Yamaha Corporation)

Director (Outside)..... Yoshifumi Nishikawa (Concurrently holds the position of Representative Executive Officer and President & CEO of Japan Post Holdings Co., Ltd.)

2. Auditors

Haruki Inuma

Chikanori Saio

Kiyoshi Nishimura

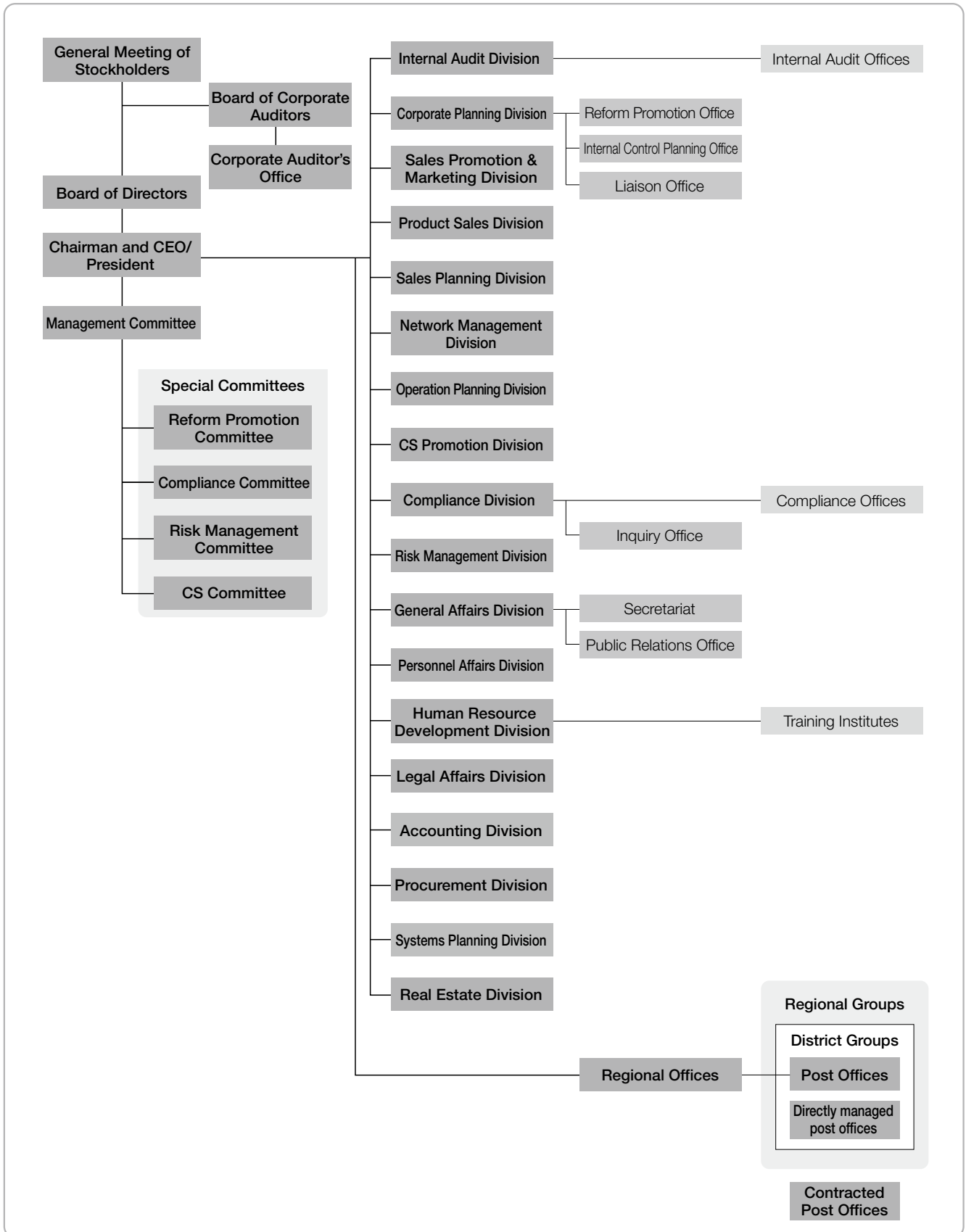
Yoshikazu Yamaguchi

3. Executive Officers

Senior Managing Executive Officer	Kiyoteru Suzuki	Executive Officer	Shin Ueda
Senior Managing Executive Officer	Nobuyuki Hidaka	Executive Officer	Atsuko Onodera
Senior Managing Executive Officer (Concurrently holds the position of Senior Managing Executive Officer of Japan Post Bank Co., Ltd.)	Akira Iwasaki	Executive Officer	Kikuo Kushibiki
Managing Executive Officer	Manabu Kawamura	Executive Officer	Yoshikazu Kurita
Managing Executive Officer	Hitoshi Shirakawa	Executive Officer	Kiyoshi Kobayashi
Managing Executive Officer	Kinzo Nakazawa	Executive Officer (Concurrently holds the position of Executive Officer of Japan Post Holdings Co., Ltd.)	Hiroyuki Shimizu
Managing Executive Officer (Concurrently holds the position of Managing Executive Officer of Japan Post Bank Co., Ltd.)	Satoru Ito	Executive Officer	Hideki Yanagihara
Managing Executive Officer	Seiji Katsuno		
Managing Executive Officer	Toshihiro Tsuboi		

5 Organization Chart

(As of July 1, 2009)



6 Names and Locations of Regional Offices

(As of July 1, 2009)

Name of regional office	Location
Hokkaido	4-3, Kita 2-jo Nishi, Chuo-ku, Sapporo, Hokkaido 060-8797
Tohoku	1-34, Ichiban-cho 1-chome, Aoba-ku, Sendai, Miyagi 980-8797
Kanto	3-1, Shintoshin, Chuo-ku, Saitama, Saitama 330-9797
Tokyo	6-19, Azabudai 1-chome, Minato-ku, Tokyo 106-8797
Minami Kanto	1-1, Sakuragi-cho, Naka-ku, Yokohama, Kanagawa 231-8694
Shinetsu	801, Kurita, Nagano, Nagano 380-8797
Hokuriku	1-1, Owari-cho 1-chome, Kanazawa, Ishikawa 920-8797
Tokai	2-5, Marunouchi 3-chome, Naka-ku, Nagoya, Aichi 469-8797
Kinki	3-9, Kitahama Higashi, Chuo-ku, Osaka, Osaka 530-8797
Chugoku	19-8, Higashi Hakushima-cho, Naka-ku, Hiroshima, Hiroshima 730-8797
Shikoku	8-5, Miyata-cho, Matsuyama, Ehime 790-8797
Kyushu	1-1, Joto-machi, Kumamoto, Kumamoto 860-8797
Okinawa	26-29, Higashi-machi, Naha, Okinawa 900-8797

7 Training Institutes and Internal Audit Offices

Training Institutes: 11

Internal Audit Offices: 50

*The number of training institutes includes Postal College.

8 Post Offices by Prefecture

(As of March 31, 2009)

Prefecture	Post offices in service				Post offices out of service				Grand total
	Directly managed post offices		Contracted post offices	Total	Directly managed post offices		Contracted post offices	Total	
	Regular post offices	Post office branches			Regular post offices	Post office branches			
Hokkaido	1,215	1	270	1,486	0	0	29	29	1,515
Aomori	267	0	94	361	0	0	1	1	362
Iwate	308	0	119	427	0	0	5	5	432
Miyagi	363	0	88	451	0	0	5	5	456
Akita	273	0	127	400	0	0	1	1	401
Yamagata	289	0	108	397	0	0	1	1	398
Fukushima	432	0	107	539	0	0	9	9	548
Ibaraki	465	0	54	519	0	0	2	2	521
Tochigi	311	0	40	351	0	0	7	7	358
Gunma	302	0	36	338	0	0	2	2	340
Saitama	623	0	16	639	0	0	3	3	642
Chiba	692	0	31	723	0	0	3	3	726
Kanagawa	753	1	13	767	0	0	1	1	768
Yamanashi	201	0	57	258	0	0	9	9	267
Tokyo	1,499	5	7	1,511	8	0	0	8	1,519
Niigata	535	2	131	668	0	0	16	16	684
Nagano	445	0	193	638	0	0	22	22	660
Toyama	212	0	74	286	0	0	5	5	291
Ishikawa	254	1	69	324	0	0	3	3	327
Fukui	210	0	30	240	0	0	3	3	243
Gifu	355	1	84	440	0	0	18	18	458
Shizuoka	484	0	82	566	0	0	37	37	603
Aichi	835	5	69	909	0	0	25	25	934
Mie	372	0	79	451	0	0	16	16	467
Shiga	229	0	29	258	0	0	3	3	261
Kyoto	441	2	34	477	1	0	0	1	478
Osaka	1,092	6	28	1,126	0	0	3	3	1,129
Hyogo	840	3	118	961	0	0	5	5	966
Nara	241	0	79	320	0	0	3	3	323
Wakayama	263	0	52	315	0	0	2	2	317
Tottori	147	0	93	240	0	0	7	7	247
Shimane	257	0	110	367	0	0	12	12	379
Okayama	419	3	96	518	0	0	18	18	536
Hiroshima	583	1	108	692	0	0	13	13	705

Prefecture	Post offices in service				Post offices out of service				Grand total
	Directly managed post offices		Contracted post offices	Total	Directly managed post offices		Contracted post offices	Total	
	Regular post offices	Post office branches			Regular post offices	Post office branches			
Yamaguchi	354	2	57	413	0	0	8	8	421
Tokushima	203	0	28	231	0	0	8	8	239
Kagawa	189	0	28	217	0	0	10	10	227
Ehime	317	0	76	393	0	0	6	6	399
Kochi	229	0	90	319	0	0	4	4	323
Fukuoka	714	0	88	802	0	0	9	9	811
Saga	166	0	38	204	0	0	2	2	206
Nagasaki	311	0	135	446	0	0	3	3	449
Kumamoto	391	0	175	566	0	0	3	3	569
Oita	308	0	91	399	0	0	3	3	402
Miyazaki	196	0	113	309	0	0	1	1	310
Kagoshima	436	2	275	713	0	0	8	8	721
Okinawa	180	1	20	201	0	0	0	0	201
Nationwide total	20,201	36 ^{Note 1}	3,939	24,176	9	0	354 ^{Note 2}	363	24,539

* The respective number of post offices include those that are not commissioned to carry out bank agency and insurance operations and excludes mobile post offices.

* Contracted post offices operate under consignment contracts.

* Post offices out of service are those post offices where customers have been informed that the office is being closed temporarily and counter services have been suspended.

Note 1: Of this total of 36, three post office branches were established temporarily while a contracted post office was closed provisionally as an emergency measure

2: Services in areas where contracted post offices have been closed are as follows. Additionally, since October 1, 2007, 203 contracted post offices that have been temporarily closed resumed operations, and the number of contracted post offices temporarily closed has been reduced by 63.

Number of contracted post offices out of service	Number of instances where services are provided by personnel dispatched to the location	Number of instances where services are provided by mobile post offices
354	121	5 (2 vehicles)

9 Outline of Subsidiary

(As of March 31, 2009)

Company name	Location	Paid-in capital (Millions of yen)	Line of business	Date of establishment	Japan Post Network ownership	Ownership of voting shares
Post Office Business Support Co., Ltd.	Koto-ku, Tokyo	¥100	Processing of orders received and placed for catalog sales operations	September 11, 2007	100.0%	100.0%

10 History of Japan Post Network

April 1871	Modern postal service introduced
January 1875	Government mail offices and mail handling offices renamed post offices
	Postal money order service established
May 1875	Postal savings service inaugurated
December 1885	Ministry of Communications established
March 1906	Postal <i>giro</i> service inaugurated
October 1916	Postal life insurance services inaugurated
June 1949	The Ministry of Posts and Telecommunications established
January 2001	Postal Service Agency established as part of realignment of government ministries
April 2003	Japan Post established
October 2005	Postal Services Privatization Act passed
January 2006	Japan Post Holdings Co., Ltd. established as a preparation and planning company for privatization
October 2007	Japan Post Group established
	Japan Post Network Co., Ltd. established
	Sales of automobile insurance commenced
December 2007	Forum to investigate ways to strengthen contracted post office service channels established (until March 2008)
February 2008	Alternative services to replace temporarily closed contracted post offices initiated (via external sales and service personnel and mobile post offices)
March 2008	Spring <i>Arigatou</i> -Fair implemented
April 2008	Advertising business started by making effective use of extra space at post offices
May 2008	Variable annuity sales commenced
June 2008	Summer <i>Arigatou</i> -Fair implemented (until August 2008)
August 2008	Post Office Referrals comprehensive lifestyle referral services launched
	Sales of products and services at post offices started (JP LAWSON stores)
October 2008	Sales of third-sector insurance commenced
	Sales of life insurance for companies (for management-level personnel) commenced
	Winter <i>Arigatou</i> -Fair implemented (until December 2008)
November 2008	Post office mail-order shop launched on website
January 2009	Transfer services with other financial institutions via the Zengin Data Telecommunication System started
March 2009	Total printing service launched
	Cargo collection using four-wheeled mini-vehicles started
	Spring <i>Arigatou</i> -Fair implemented (until April 2009)
June 2009	Sales of mail-related products commenced in post offices
	Home-visit financial services commenced at post offices in less-populated areas
July 2009	Increasing term life insurance sales commenced

3. Outline of Japan Post Service Co., Ltd.

1 Company Outline

Company name (in Japanese):	Yubin Jigyo Kabushiki Kaisha
Company name:	JAPAN POST SERVICE Co., Ltd.
Head office location:	3-2, Kasumigaseki 1-chome, Chiyoda-ku, Tokyo 100-8798, Japan
Telephone:	03-3504-4411 (Japan Post Group main number)
Paid-in capital:	¥100 billion
Date of establishment:	October 1, 2007
Legal basis:	Established under the Japan Post Service Act (Law No. 99 of October 21, 2005)
Lines of business:	Postal service business, domestic distribution and delivery business, international cargo transport and agency services for air cargo business, logistics business., etc.

2 Information on Shares

1. Number of Shares

Total shares issued	4,000,000
----------------------------	-----------

2. Shareholder

Japan Post Holdings	Condition of holdings	
	Shares owned	Percentage of total issued
	4,000,000	100%

3 Number of Employees

95,631* (as of March 31, 2009)

* Number of regular employees. Includes employees seconded to Japan Post Service Co., Ltd. Excludes employees seconded to other companies and temporary employees.

4 List of Directors, Auditors and Executive Officers

(As of June 26, 2009)

1. Directors

Chairman and CEO Norio Kitamura

President and COO Hiroaki Dan (Concurrently holds the position of Deputy President and Representative Executive Officer of Japan Post Holdings Co., Ltd.)

Executive Vice President Yoshiro Nakajo

Director (Outside) Yoshifumi Nishikawa (Concurrently holds the position of Representative Executive Officer and President & CEO of Japan Post Holdings Co., Ltd.)

Director (Outside) Satoru Matsubara (Concurrently holds the position of professor at Toyo University)

Director (Outside) Masafumi Yokota (Concurrently holds the position of partner with Corporate Direction Co., Ltd.)

2. Auditors

Katsuyuki Okada

Hisamitsu Gannyo

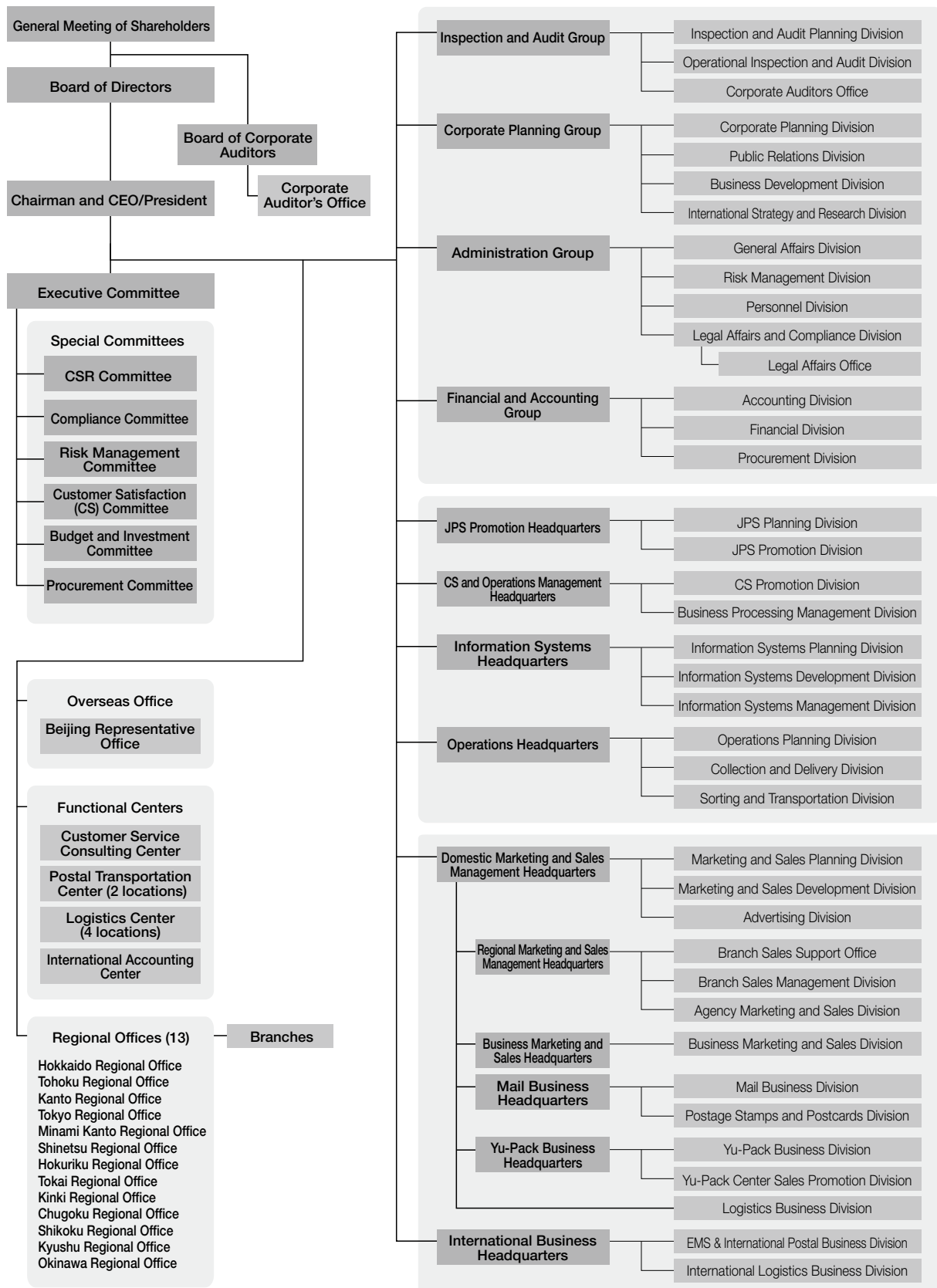
Yoshio Haibara

3. Executive Officers

First Executive Officer (Concurrently holds the position of Senior Managing Executive Officer at Japan Post Holdings Co., Ltd. as of June 29, 2009)	Toshiro Ito	Executive Officer	Naoki Nakashima
		Executive Officer	Seiki Fukuda
First Executive Officer	Sakon Uda	Executive Officer	Hideyuki Hokazono
First Executive Officer	Ikuo Shirakane	Executive Officer	Tokio Matsumoto
First Executive Officer	Hiroshige Nagoya	Executive Officer	Masaharu Matsumoto
Senior Executive Officer	Tameyasu Tsukada	Executive Officer	Junichiro Miyazaki
Senior Executive Officer	Takao Miwa	Executive Officer	Keiichi Yano
Executive Officer	Shuji Obu	Executive Officer	Kazuya Yamaguchi
Executive Officer	Hatsumi Shimizu	Executive Officer	Yoshio Yuzawa
Executive Officer	Kazuaki Daikaku		

5 Organization Chart

(As of July 1, 2009)



6 Names and Locations of Regional Offices

(As of July 1, 2009)

Name of regional office	Location
Hokkaido	4-3, Kita 2-jo Nishi, Chuo-ku, Sapporo, Hokkaido 060-8797
Tohoku	1-34, Ichiban-cho 1-chome, Aoba-ku, Sendai, Miyagi 980-8797
Kanto	3-1, Shintoshin, Chuo-ku, Saitama, Saitama 330-9797
Tokyo	6-19, Azabudai 1-chome, Minato-ku, Tokyo 106-8797
Minami Kanto	14-2, Takashima 2-chome, Nishi-ku, Yokohama, Kanagawa 220-8998
Shinetsu	801, Kurita, Nagano, Nagano 380-8797
Hokuriku	1-1, Owari-cho 1-chome, Kanazawa, Ishikawa 920-8797
Tokai	2-5, Marunouchi 3-chome, Naka-ku, Nagoya, Aichi 469-8797
Kinki	3-9, Kitahama Higashi, Chuo-ku, Osaka, Osaka 530-8797
Chugoku	19-8, Higashi Hakushima-cho, Naka-ku, Hiroshima, Hiroshima 730-8797
Shikoku	8-5, Miyata-cho, Matsuyama, Ehime 790-8797
Kyushu	1-1, Joto-machi, Kumamoto, Kumamoto 860-8797
Okinawa	26-29, Higashi-machi, Naha, Okinawa 900-8797

7 Number of Offices by Prefecture

(As of March 31, 2009)

Prefecture	Number of offices	Prefecture	Number of offices
Hokkaido	57	Shiga	12
Aomori	10	Kyoto	27
Iwate	15	Osaka	68
Miyagi	18	Hyogo	46
Akita	11	Nara	15
Yamagata	11	Wakayama	12
Fukushima	20	Tottori	4
Ibaraki	30	Shimane	7
Tochigi	17	Okayama	19
Gunma	16	Hiroshima	27
Saitama	51	Yamaguchi	18
Chiba	47	Tokushima	7
Kanagawa	55	Kagawa	10
Yamanashi	11	Ehime	16
Tokyo	89	Kochi	9
Niigata	27	Fukuoka	45
Nagano	24	Saga	8
Toyama	12	Nagasaki	12
Ishikawa	12	Kumamoto	16
Fukui	10	Oita	11
Gifu	19	Miyazaki	6
Shizuoka	31	Kagoshima	11
Aichi	62	Okinawa	14
Mie	16	Nationwide total	1,091

8 Number of Collection and Delivery Centers

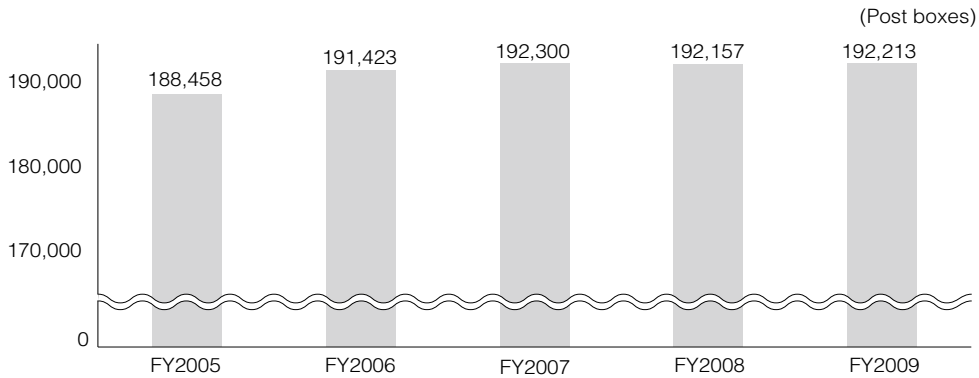
Collection and delivery centers: 2,556
(As of March 31, 2009)

9 Subsidiaries and Affiliated Companies

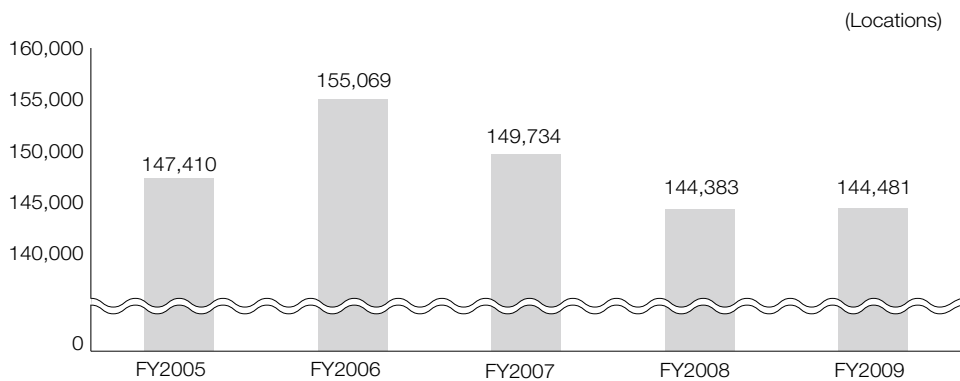
(As of March 31, 2009)

Affiliation	Company name	Location of principal office	Paid-in capital (millions)	Line of business	Date of establishment	Japan Post Service ownership	Ownership of voting shares
Consolidated subsidiaries	JP Logi Service Co., Ltd.	Japan Post Group Osaka Bldg., 3-9 Kitahama higashi, Chuo-ku, Osaka 540-0031	¥34	Preparation and posting of postal items, parcels and mail items	October 15, 1968	67.6%	67.6%
	JP Biz Mail Co., Ltd.	42-4, Senjuakebono-cho, Adachi-ku, Tokyo 120-0023	¥100	Preparation and posting of postal items	February 1, 2006	51.0%	58.5%
	DM Leading Co., Ltd.	Talkpia Kawasaki Bldg., 5-1, Fujisaki 3-chome, Kawasaki-ku, Kawasaki, Kanagawa 210-0804	¥50	Preparation and posting of postal items	November 1, 2004	0.0%	100.0%
	JP Logistics Partners Co., Ltd.	4-23, Shinsuna 2-chome, Koto-ku, Tokyo 137-8799	¥100	Facilitation of sales campaigns	September 1, 2004	51.0%	51.0%
	JP Media Direct Co., Ltd.	Toranomon NN Bldg. 5F, 21-17, Toranomom 1-chome, Minato-ku, Tokyo 105-0001	¥250	Product development of direct media	February 29, 2008	51.0%	51.0%
	Japan Post Transport Co., Ltd.	4-1 Shiba-koen 2-chome, Minato-ku, Tokyo 105-0011	¥18,250	Truck cargo transportation	November 30, 2007	100.0%	100.0%
	JAPAN POST SANKYU GLOBAL LOGISTICS Co., Ltd.	Hokusui Bldg No. 2, 11-11 Kachidoki 5-chome, Chuo-ku, Tokyo 104-0054	¥300	International air freight forwarding	July 1, 2008	60.0%	60.0%
Affiliated companies, accounted for under the equity method	ANA & JP Express Co., Ltd.	5-2, Higashi Shinbashi 1-chome, Minato-ku, Tokyo 105-7133	¥80	Air cargo transportation	February 1, 2006	33.3%	33.3%
	JP Express Co., Ltd.	Shin-Nikko Bldg West 10F, 10-1 Toranomom 2-chome, Minato-ku, Tokyo 105-0001	¥300	Preparation for integration of small-parcel delivery services	June 2, 2008	50.0%	50.0%

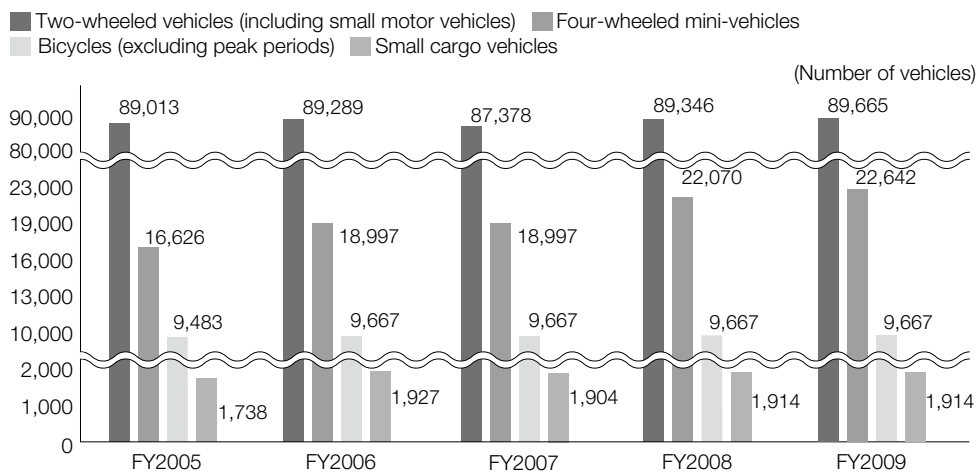
10 Number of Post Boxes



11 Number of Locations Selling Postage Stamps and Revenue Stamps



12 Number of Vehicles Owned



13 History of Japan's Postal Services Business and Japan Post Service

April 1871	Modern postal service introduced
	Issuance of postal stamps begun
August 1872	Nationwide implementation of the postal services system
December 1885	Ministry of Communications established
February 1887	The 〒 mark adopted as the logo for the Ministry of Communications
October 1892	Parcel post services begun
June 1949	The Ministry of Posts and Telecommunications established
December 1949	Issuance of New Year's lottery postcards begun
January 2001	Postal Service Agency established as part of realignment of government ministries
April 2003	Japan Post established
October 2005	Postal Services Privatization Act passed
January 2006	Japan Post Holdings Co., Ltd. established as a preparation and planning company for privatization
February 2006	ANA & JP Express Co., Ltd. established as a joint company
	JP Biz Mail Co., Ltd. established
September 2006	Sale of frame stamps with photos introduced
	Realignment of collection and delivery centers (from September 2006 through March 2007)
September 2007	Implementation plan related to the transfer of business operations to Japan Post approved
October 2007	Japan Post Group established
	Japan Post Service Co., Ltd. established
November 2007	First New Year's greeting postcards with donation feature for environmental carbon offset purposes introduced
February 2008	Joint venture with Dentsu Inc. and Dentsu Tech Inc. established
April 2008	Agreement to integrate parcel delivery operations with Nippon Express Co., Ltd. concluded
July 2008	Establishment of jointly owned company with Sankyu Inc.
August 2008	Application for forwarding service via the Internet initiated
	Internet shopping mall newly established for China
December 2008	Ceremonies to launch test demonstrations of environment-friendly vehicles held
February 2009	Integration of major 14 transportation companies into Japan Post Transport Co., Ltd. completed
April 2009	Postal services for delivering specific items for designated persons expanded nationwide
	Commission fees on Yu-Pack cash-on-delivery service eliminated

4. Outline of Japan Post Bank Co., Ltd.

1 Company Outline

Company name (in Japanese):	Kabushiki Kaisha Yucho Ginko
Company name:	JAPAN POST BANK Co., Ltd.
Head office location:	3-2, Kasumigaseki 1-chome, Chiyoda-ku, Tokyo 100-8798, Japan
Telephone:	03-3504-4411 (Japan Post Group main number)
Paid-in capital:	¥3,500 billion
Date of establishment:	September 1, 2006 (On October 1, 2007, the name was changed from Yucho Co., Ltd. to Japan Post Bank Co., Ltd.)
Line of business:	Banking
Financial institution code number:	9900

2 Information on Shares

1. Number of Shares

Total shares issued	150,000,000
----------------------------	-------------

2. Shareholder

Japan Post Holdings	Condition of holdings	
	Shares owned	Percentage of total issued
	150,000,000	100%

3 Number of Employees

11,675* (as of March 31, 2009)

* Number of regular employees. Includes employees seconded to Japan Post Bank Co., Ltd. Excludes employees seconded to other companies and contract and temporary employees.

4 List of Directors, Executive Officers and Management Committees

(As of June 29, 2009)

1. Directors

Chairman & CEO	Koji Furukawa
President & COO	Shokichi Takagi (Concurrently holds the position of Representative Executive Officer and Deputy President of Japan Post Holdings Co., Ltd.)
Director (Outside)	Atsushi Kinebuchi (Formerly held the position of Director and Executive Vice President of Nomura Asset Management Co., Ltd.)
Director (Outside)	Yoshifumi Nishikawa (Concurrently holds the position of Representative Executive Officer and President & CEO of Japan Post Holdings Co., Ltd.)
Director (Outside)	Fumio Masada (Formerly held the position of Director and Executive Vice President of Nippon Life Insurance Company)
Director (Outside)	Noboru Matsuda (Concurrently holds the position of Attorney-at-Law)

2. Executive Officers

Executive Vice President (Concurrently holds the position of Senior Managing Executive Officer of Japan Post Holdings Co., Ltd.)	Tomohiro Yonezawa	Managing Executive Officer	Riki Mukai
Executive Vice President	Sumio Fukushima	Managing Executive Officer	Masahiro Murashima
Senior Managing Executive Officer	Tomohisa Mase	Executive Officer	Hiroichi Shishimi
Senior Managing Executive Officer (Concurrently holds the position of Senior Managing Executive Officer of Japan Post Network Co., Ltd.)	Akira Iwasaki	Executive Officer	Takashi Usuki
Senior Managing Executive Officer	Toru Takahashi	Executive Officer	Yoko Makino
Managing Executive Officer	Shyuichi Ikeda	Executive Officer	Masaya Aida
Managing Executive Officer	Susumu Tanaka	Executive Officer	Naoto Misawa
Managing Executive Officer	Hiroshi Yamada	Executive Officer	Masato Wakai
Managing Executive Officer	Satoshi Hoshino	Executive Officer	Katsumi Amano
Managing Executive Officer (Concurrently holds the position of Managing Executive Officer of Japan Post Network Co., Ltd.)	Satoru Ito	Executive Officer	Kunihiko Amaha
			Osami Niihori

3. Nomination Committee

Chairperson	Yoshifumi Nishikawa	
Members	Koji Furukawa	Atsushi Kinebuchi
	Shokichi Takagi	Fumio Masada

4. Audit Committee

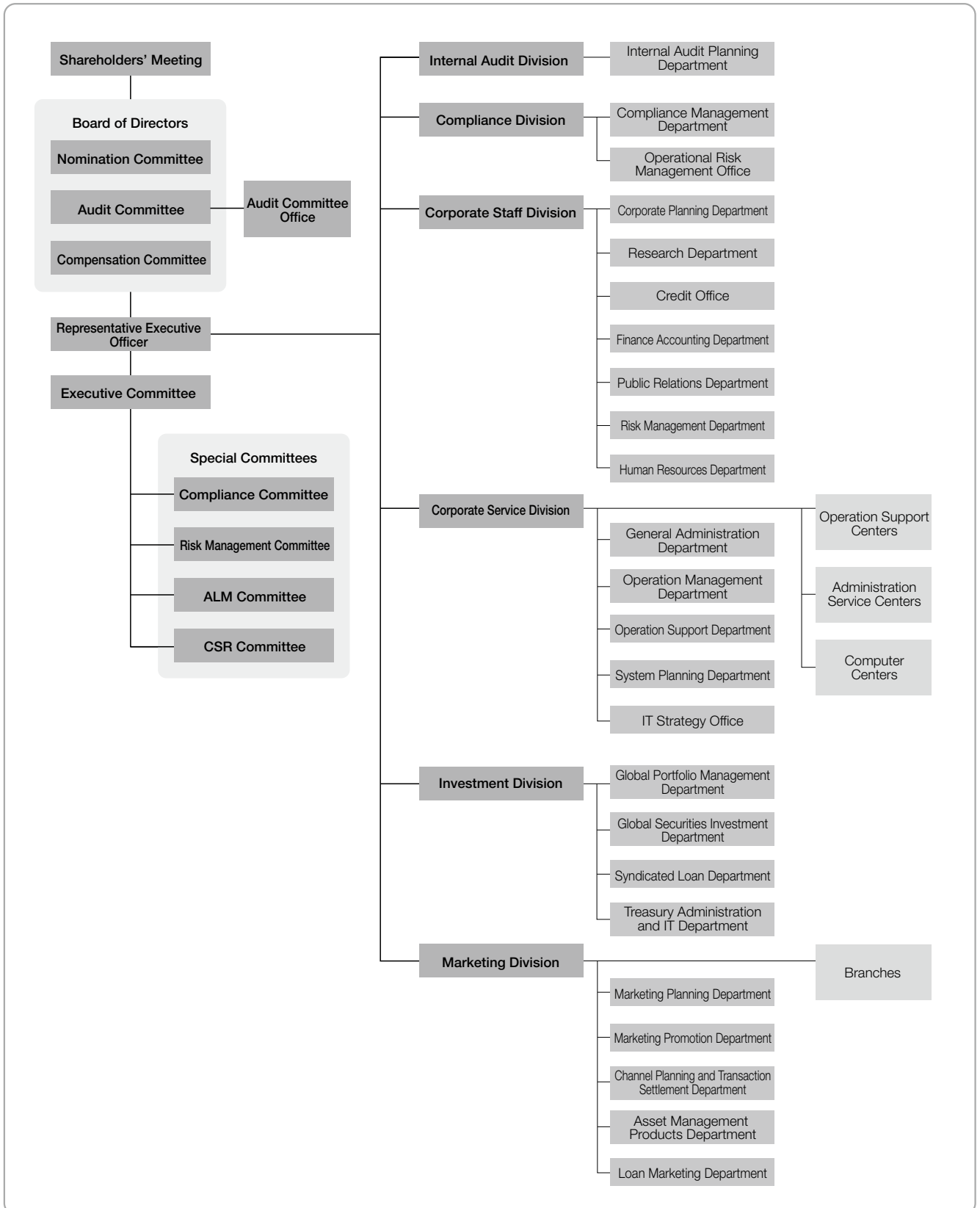
Chairman	Noboru Matsuda	
Members	Atsushi Kinebuchi	Fumio Masada

5. Compensation Committee

Chairman	Yoshifumi Nishikawa	
Members	Koji Furukawa	Atsushi Kinebuchi
	Shokichi Takagi	Fumio Masada

5 Organization Chart

(As of July 1, 2009)



6 Principal Business Locations

Principal business locations include the Head Office, 234 marketing offices, 49 operation support centers, 11 administration service centers and 2 computer centers.

(As of March 31, 2009)

Name of branch	Location
Sapporo Branch	4-3, Kita Nijo Nishi, Chuo-ku, Sapporo, Hokkaido
Sendai Branch	1-3-3, Ichibancho, Aoba-ku, Sendai, Miyagi
Saitama Branch	7-1-12, Bessho, Minami-ku, Saitama, Saitama
Central Branch	Yusen Building, 3-2, Marunouchi 2-chome, Chiyoda-ku, Tokyo
Nagano Branch	1085-4, Minami Agata-machi, Nagano, Nagano
Kanazawa Branch	1-1, Sanja-machi, Kanazawa, Ishikawa
Nagoya Branch	3-1-10, Otsu, Naka-ku, Nagoya, Aichi
Osaka Branch*	2-4, Umeda 3-chome, Kita-ku, Osaka, Osaka
Hiroshima Branch	6-36, Moto-machi, Naka-ku, Hiroshima, Hiroshima
Matsuyama Branch	3-5-2, Sanban-cho, Matsuyama, Ehime
Kumamoto Branch	1-1, Joto-machi, Kumamoto, Kumamoto
Naha Branch	1-1-1, Kumoji, Naha, Okinawa

* The Osaka Branch moved to the following address as of May 7, 2009: Osaka-Ekimae Daiichi Bldg 2F, 3-1, Umeda 1-chome, Kita-ku, Osaka, Osaka 530-0001
Telephone: 06-6347-8112

7 Japan Post Bank Offices by Prefecture

(As of March 31, 2009) (Branches/Post offices)

Prefecture	Head Office/ Principal prefectural offices	Sub-branches	Japan Post Bank agents		Total
			Post offices	Contracted post offices	
Hokkaido	1	4	1,211	268	1,484
Aomori	—	2	265	90	357
Iwate	—	1	307	115	423
Miyagi	1	1	361	87	450
Akita	—	1	273	124	398
Yamagata	—	1	288	107	396
Fukushima	—	3	430	107	540
Ibaraki	—	3	462	54	519
Tochigi	—	2	309	40	351
Gunma	—	3	299	36	338
Saitama	1	16	606	15	638
Chiba	—	13	679	32	724
Kanagawa	—	31	723	13	767
Yamanashi	—	1	200	56	257
Tokyo	1	40	1,463	7	1,511
Niigata	—	3	534	127	664
Nagano	1	2	441	182	626
Toyama	—	2	210	72	284
Ishikawa	1	—	253	69	323
Fukui	—	1	209	29	239
Gifu	—	2	354	77	433
Shizuoka	—	5	478	70	553
Aichi	1	13	826	65	905
Mie	—	2	370	74	446
Shiga	—	1	228	29	258
Kyoto	—	4	439	34	477
Osaka	1	23	1,073	28	1,125
Hyogo	—	12	830	118	960
Nara	—	2	239	80	321
Wakayama	—	1	262	52	315
Tottori	—	1	146	92	239
Shimane	—	1	256	110	367
Okayama	—	2	420	96	518
Hiroshima	1	3	580	108	692
Yamaguchi	—	3	353	56	412
Tokushima	—	1	202	27	230
Kagawa	—	2	187	27	216
Ehime	1	1	315	76	393
Kochi	—	1	228	88	317
Fukuoka	—	4	710	83	797
Saga	—	1	165	36	202
Nagasaki	—	2	309	133	444
Kumamoto	1	1	389	173	564
Oita	—	2	306	88	396
Miyazaki	—	1	195	111	307
Kagoshima	—	1	437	271	709
Okinawa	1	—	180	20	201
Total	12	222	20,000	3,852	24,086

Note 1: The number of post offices refers to the number of sales offices and branches handling bank agency operations (including branches). However, the number of mobile post offices (2 branches in Aichi and Tokushima prefectures) is excluded.

2: The number of mobile post offices refers to the number of sales offices or branches commissioned to handle bank agency operation by Japan Post Service on behalf of Japan Post Bank.

8 Number of ATMs by Prefecture

(As of March 31, 2009)

Prefecture	Number of ATMs
Hokkaido	1,680
Aomori	313
Iwate	342
Miyagi	493
Akita	311
Yamagata	318
Fukushima	498
Ibaraki	561
Tochigi	368
Gunma	351
Saitama	891
Chiba	934
Kanagawa	1,119
Yamanashi	217
Tokyo	2,519
Niigata	646
Nagano	531
Toyama	251
Ishikawa	318
Fukui	241
Gifu	410
Shizuoka	578
Aichi	1,128
Mie	424

Prefecture	Number of ATMs
Shiga	283
Kyoto	559
Osaka	1,518
Hyogo	1,099
Nara	290
Wakayama	297
Tottori	165
Shimane	289
Okayama	506
Hiroshima	773
Yamaguchi	432
Tokushima	234
Kagawa	247
Ehime	403
Kochi	272
Fukuoka	980
Saga	209
Nagasaki	369
Kumamoto	466
Oita	340
Miyazaki	228
Kagoshima	489
Okinawa	246
Nationwide total	26,136

*Number of ATMs of mobile post offices in Aichi and Tokushima prefectures not included.

9 Outline of Affiliated Company

(As of March 31, 2009)

Company name	Location	Paid-in capital (Millions of yen)	Line of business	Date of establishment	Japan Post Bank ownership	Ownership of voting shares
SDP Center Co., Ltd.	Chuo-ku, Tokyo	¥2,000	Bank agency operations	May 28, 1980	45.0%	45.0%

10 History of Japan's Postal Savings and Japan Post Bank

January 1875	Postal money order service established
May 1875	Postal savings service inaugurated
December 1885	Ministry of Communications established
March 1906	Postal <i>giro</i> service inaugurated
June 1949	The Ministry of Posts and Telecommunications established
January 2001	Postal Service Agency established as part of realignment of government ministries
April 2003	Japan Post established
October 2005	Postal Services Privatization Act passed
September 2006	Yucho Co., Ltd. established as a preparation and planning company for Japan Post Bank Co., Ltd.
September 2007	Implementation plan approved for transfer of operations of Japan Post Agreement reached between Sugura Bank Ltd. and Japan Post Holdings for an operational alliance in the field of consumer lending
October 2007	Japan Post Group established
	Name changed to Japan Post Bank Co., Ltd., and operations started
	Campaign launched to commemorate privatization (featuring a lottery campaign and the elimination of fees for internal transfers of funds through Japan Post Bank ATMs)
December 2007	First preferential interest rate campaign launched
	Approval for new business obtained (liberalization of certain investment products)
January 2008	ATMs available during the first three days of the New Year for the first time
April 2008	New business activities approved: Issuance of credit cards, acting as agent for sale of individual variable annuities and offering intermediary services for mortgage loans and other loans
	Formed business alliance agreement with Suruga Bank for offering loans for individuals, centering on mortgage loans
May 2008	Issuance of JP BANK CARD (VISA, MasterCard) begun
	Intermediary services for individual loans launched
	Agent sales of variable annuities begun
January 2009	Transfer services with other financial institutions via the Zengin Data Telecommunication System started
	Issuance of JP BANK JCB card begun
March 2009	Issuance of five types of postal orders newly started
April 2009	Handling of <i>Yucho Nenkin Teiki</i> and <i>Yucho Tokimeki Kurabu</i> started
	Handling of <i>Yucho IC Cash Card Suica</i> started
May 2009	Additional service menu added for Yucho Direct (including <i>TEIGAKU</i> and time deposits that serve as collateral and transfers to other financial institutions)

5. Outline of Japan Post Insurance Co., Ltd.

1 Company Outline

Company name (in Japanese):	Kabushiki Kaisha Kanpo Seimei Hoken
Company name:	JAPAN POST INSURANCE Co., Ltd.
Head office location:	3-2, Kasumigaseki 1-chome, Chiyoda-ku, Tokyo 100-8798, Japan
Telephone:	03-3504-4411 (Japan Post Group main number)
Paid-in capital:	¥500 billion
Date of establishment:	September 1, 2006 (The name of the company was changed from Kanpo Co., Ltd. to Japan Post Insurance Co., Ltd., on October 1, 2007.)
Line of business:	Life insurance

2 Information on Shares

1. Number of Shares

Total shares issued	20,000,000
----------------------------	------------

2. Shareholder

Japan Post Holdings	Condition of holdings	
	Shares owned	Percentage of total issued
	20,000,000	100%

3 Number of Employees

5,770* (as of March 31, 2009)

* Number of regular employees. Includes employees seconded to Japan Post Insurance Co., Ltd. Excludes employees seconded to other companies and contract and temporary employees.

4 List of Directors, Executive Officers and Management Committees

(As of July 1, 2009)

1. Directors

Director and Chairman	Josuke Shindo
Director and President	Izumi Yamashita (Concurrently holds the position of Deputy President of Japan Post Holding Co., Ltd.)
Director (Outside)	Toshiaki Katsushima (Concurrently holds the position of Certified Public Accountant)
Director (Outside)	Hiroshi Koshida (Formerly Chairman of the Japan Securities Dealers' Association)
Director (Outside)	Masaharu Hino (Concurrently holds the position of Attorney-at-Law)
Director (Outside)	Kunio Yokoyama (Concurrently holds the position of Senior Managing Executive Officer of Japan Post Holdings Co., Ltd.)

2. Executive Officers

Deputy President	Kazuo Miyazaki	Executive Officer	Yoshifumi Ikeda
Senior Managing Executive Officer	Takao Ito	Executive Officer	Hiroshi Imoto
Senior Managing Executive Officer	Masaro Sugimoto	Executive Officer	Kazuhide Kinugawa
Managing Executive Officer	Yukiharu Aoki	Executive Officer	Masanori Sato
Managing Executive Officer	Shoji Awakura	Executive Officer	Masahiko Sugimori
Managing Executive Officer	Masaaki Kamohara	Executive Officer	Akihiro Takeuchi
Managing Executive Officer	Masatoshi Shinoda	Executive Officer	Kiyotaka Fujimoto
Managing Executive Officer	Toshihisa Minakata	Executive Officer	Masatoki Hosonuma
		Executive Officer	Masaaki Horigane

3. Nomination Committee

Chairman	Kunio Yokoyama	
Members	Josuke Shindo	Hiroshi Koshida
	Izumi Yamashita	Masaharu Hino

4. Audit Committee

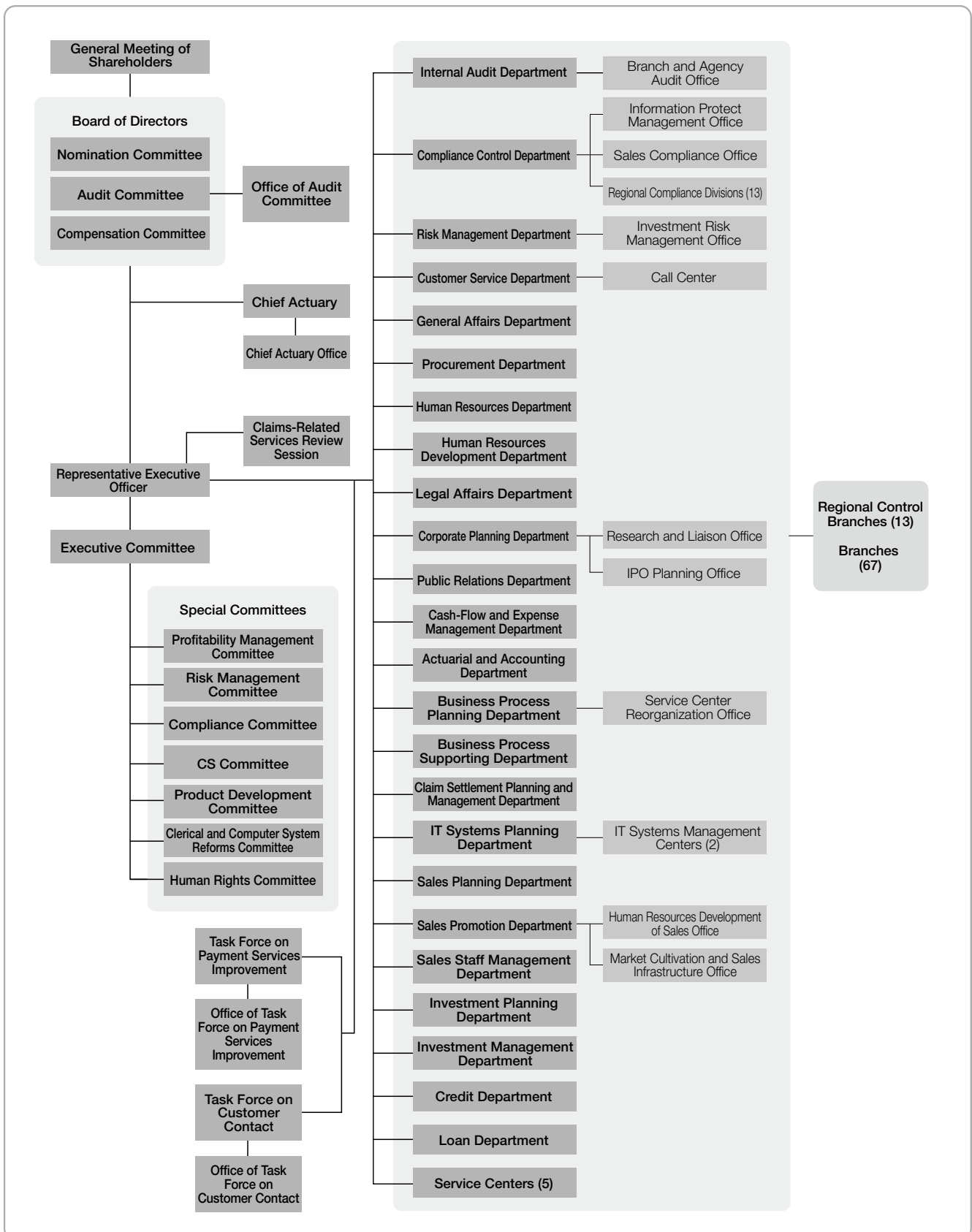
Chairman	Masaharu Hino	
Members	Toshiaki Katsushima	Hiroshi Koshida

5. Compensation Committee

Chairman	Kunio Yokoyama	
Members	Josuke Shindo	Toshiaki Katsushima
	Izumi Yamashita	Hiroshi Koshida

5 Organization Chart

(As of July 1, 2009)



6 Principal Branches (Regional Control Offices)

(As of July 1, 2009)

Name of branch	Location	Telephone number
Sapporo	2-1, Odori Higashi, Chuo-ku, Sapporo, Hokkaido 060-0041	011-221-6375
Sendai	1-1-34, Ichibancho, Aoba-ku, Sendai, Miyagi 980-8797	022-267-7849
Saitama	3-1, Shintoshin, Chuo-ku, Saitama, Saitama 330-9797	048-600-2066
Yokohama	5-3, Nihon Odori, Naka-ku, Yokohama, Kanagawa 231-8799	045-212-3928
Azabu	6-19, Azabudai 1-chome, Minato-ku, Tokyo 106-8799	03-3583-9928
Nagano	801, Kurita, Nagano, Nagano 380-8797	026-231-2342
Kanazawa	1-1, Owari-cho 1-chome, Kanazawa, Ishikawa 920-8797	076-220-3171
Nagoya	2-5, Marunouchi 3-chome, Naka-ku, Nagoya, Aichi 469-8797	052-963-6351
Osaka	3-9, Kitahama Higashi, Chuo-ku, Osaka, Osaka 530-8797	06-6944-5765
Hiroshima	19-8, Higashi Hakushima-cho, Naka-ku, Hiroshima, Hiroshima 730-8797	082-224-5165
Matsuyama	8-5, Miyata-machi, Matsuyama, Ehime 790-8797	089-936-5612
Kumamoto	1-1, Joto-machi, Kumamoto, Kumamoto 860-8797	096-328-5343
Naha	3-3-8, Tsubogawa, Naha, Okinawa 900-8799	098-833-5516

Note: In addition to the above, there are 67 other branches.

7 History of Japan's Postal Life Insurance and Japan Post Insurance

October 1916	Postal life insurance services inaugurated
October 1926	Postal life annuity business inaugurated
June 1949	The Ministry of Posts and Telecommunications established
January 2001	Postal Service Agency established as part of realignment of government ministries
April 2003	Japan Post established
October 2005	Postal Services Privatization Act passed
September 2006	Kanpo Co., Ltd. established
October 2007	Japan Post Group established
	Name changed to Japan Post Insurance Co., Ltd.
	Japan Post Insurance operations commenced
December 2007	Approval for new business obtained (liberalization of investment products)
February 2008	Partial alliance with Nippon Life Insurance Company concluded
April 2008	Expanded the scope of financial institutions that can use accounts for making payments for insurance premiums
	New business activities approved (commissioned sales of insurance products for companies, revision of hospitalization riders)
June 2008	Commission sales of life insurance products for companies
July 2008	A new hospitalization rider, <i>Sono hi kara</i> , launched
	Offering of an option that allows a designated third party to request insurance benefits begun
	Expanded subscription age limits for ordinary endowment insurance
October 2008	Coverage of the amount equivalent to the cost of acquiring medical certificates started
April 2009	Transfers of various payments including insurance premiums via the introduction of mobile settlement terminals commenced
	Scope of coverage of the amount equivalent to the cost of acquiring medical certificates expanded
July 2009	Branch offices established in all prefectures in line with the establishment of the Nara Branch and Wakayama Branch