

INDEX

1 Outline of Japan Post Holdings Co., Ltd. 138

1. Company Outline	138
2. Information on Shares	138
1. Number of Shares	138
2. Shareholders	138
3. Information on Rights to Purchase New Shares, Etc.	138
3. Number of Employees	139
4. List of Directors, Executive Officers, and Management Committees	139
1. Directors	139
2. Executive Officers	139
3. Nomination Committee	140
4. Audit Committee	140
5. Compensation Committee	140
5. Directors Who Resigned in Fiscal 2007	140
6. Organization Chart	141

2 Principal Subsidiaries and Affiliate of Japan Post Holdings 142

3 History of the Japan Post Group 143

4 Museums and Hospitals 144

1. Museums and Libraries	144
2. Japan Post Teishin Hospitals	144

5 Outline of Japan Post Network Co., Ltd. 145

1. Company Outline	145
2. Information on Shares	145
1. Number of Shares	145
2. Shareholders	145
3. Number of Employees	146
4. List of Directors, Auditors, and Executive Officers	146
1. Directors	146
2. Auditors	146
3. Executive Officers	146
5. Organization Chart	147
6. Names and Locations of Regional Offices	148
7. Training Institutes and Internal Audit Offices	148
8. Post Offices by Prefecture	149
9. Outline of Subsidiaries	150

6 Outline of Japan Post Service Co., Ltd. 151

1. Company Outline	151
--------------------	-----

2. Information on Shares 151

1. Number of Shares	151
2. Shareholders	151

3. Number of Employees 152

4. List of Directors, Auditors, and Executive Officers 152

1. Directors	152
2. Auditors	152
3. Executive Officers	152

5. Organization Chart 153

6. Number of Offices by Prefecture 154

7. Number of Collection and Delivery Centers 154

8. Subsidiaries and Affiliated Company 155

9. Number of Mailboxes 156

10. Number of Locations Selling Postage Stamps and Revenue Stamps 156

11. Number of Vehicles Owned 156

12. History of Japan's Postal Services Business 157

7 Outline of Japan Post Bank Co., Ltd. 158

1. Company Outline 158

2. Information on Shares 158

1. Number of Shares	158
2. Shareholders	158

3. Number of Employees 159

4. List of Directors and Executive Officers 159

1. Directors	159
2. Executive Officers	159

5. Organization Chart 160

6. Principal Business Locations 161

7. Japan Post Bank Offices by Prefecture 162

8. Number of ATMs by Prefecture 163

9. History of Japan's Postal Savings and Japan Post Bank 164

8 Outline of Japan Post Insurance Co., Ltd. 165

1. Company Outline 165

2. Information on Shares 165

1. Number of Shares	165
2. Shareholders	165

3. Number of Employees 166

4. List of Directors and Executive Officers 166

1. Directors	166
2. Executive Officers	166

5. Principal Branches 167

6. Organization Chart 168

7. History of Japan's Postal Life Insurance and Japan Post Insurance 169

1. Outline of Japan Post Holdings Co., Ltd.

1 Company Outline

Company name (in Japanese):	Nippon Yusei Kabushiki Kaisha
Company name:	JAPAN POST HOLDINGS Co., Ltd.
Head office location:	3-2, Kasumigaseki 1-chome, Chiyoda-ku, Tokyo 100-8798, Japan
Paid-in capital:	¥3,500.0 billion
Date of establishment:	January 23, 2006
Legal basis:	Established under the Japan Post Holdings Law (Law No. 98 of October 21, 2005)
Lines of business:	Management of group companies
Principal business locations:	Center for personnel and accounting: 1; medical administration center: 1; medical care clinics: 48; facility centers: 7; hospitals: 14; hotels: 82; postal museum: 1.

2 Information on Shares

1. Number of Shares

Authorized number of shares	600,000,000
Total shares issued	150,000,000
Number of shareholders as of the end of fiscal 2007	One

2. Shareholders

Minister of Finance	Condition of holdings	
	Shares owned	Percentage of total issued
	150,000,000	100%

3. Information on Rights to Purchase New Shares, Etc.

None outstanding

3 Number of Employees

3,374* (as of March 31, 2008)

* Number of regular employees. Includes employees seconded to Japan Post Holdings Co., Ltd. Excludes employees seconded to other companies and temporary employees.

4 List of Directors, Executive Officers, and Management Committees

(As of July 1, 2008)

1. Directors

President & CEO (Representative Executive Officer)	Yoshifumi Nishikawa (Also holds the positions of Director of Japan Post Network Co., Ltd., Director of Japan Post Service Co., Ltd., and Director of Japan Post Bank Co., Ltd.)
Deputy President (Representative Executive Officer)	Shokichi Takagi (Also holds the position of President & COO of Japan Post Bank Co., Ltd.)
Director (Outside)	Jiro Ushio (Also holds the position of Representative Director and Chairman of Ushio Inc.)
Director (Outside)	Hiroshi Okuda (Also holds the position of Director and Senior Advisor of Toyota Motor Corporation)
Director (Outside)	Takashi Nishioka (Also holds the position of Director and Senior Advisor of Mitsubishi Heavy Industries, Ltd.)
Director (Outside)	Uichiro Niwa (Also holds the position of Director and Chairman of ITOCHU Corporation)
Director (Outside)	Reiko Okutani (Also holds the position of Representative Director and President of The R Co., Ltd.)
Director (Outside)	Tetsuo Seki (Also holds the position of Senior Adviser for Nippon Steel Corporation)
Director (Outside)	Hitomi Takahashi (Also holds the position of Senior Partner at Seinan & Co.)
Director (Outside)	Kazuhiko Shimokobe (Also holds the position of Attorney-at-Law)

2. Executive Officers

Senior Managing Executive Officer (Also holds the position of Director of Japan Post Insurance Co., Ltd.)	Kunio Yokoyama	Managing Executive Officer Executive Officer	Kenichiro Hamada Yoshihiro Chiba
Senior Managing Executive Officer (Also holds the position of Executive Vice President of Japan Post Bank Co., Ltd.)	Tomohiro Yonezawa	Executive Officer (Also holds the position of Executive Officer of Japan Post Network Co., Ltd.)	Hiroyuki Shimizu
Senior Managing Executive Officer	Hideharu Sasaki	Executive Officer	Kazuhiro Ito
Managing Executive Officer	Eisuke Fujimoto	Executive Officer	Yoshiki Terasaki
Managing Executive Officer (Also holds the position of Senior Executive Officer of Japan Post Service Co., Ltd.)	Toshiro Ito	Executive Officer	Masayoshi Takahashi
Managing Executive Officer	Yoshiaki Senoh	Executive Officer	Kunio Tanigaki
Managing Executive Officer (Also holds the position of First Executive Officer of Japan Post Service Co., Ltd.)	Ikuo Shirakane	Executive Officer	Tetsuhiko Yoshizawa

Note: The following executive officers resigned as of June 25, 2008: Sakon Uda, Senior Managing Executive Officer, and Tomohisa Mase, Managing Executive Officer.

3. Nomination Committee

Chairperson	Jiro Ushio
Members	Yoshifumi Nishikawa Shokichi Takagi Hiroshi Okuda Uichiro Niwa

4. Audit Committee

Chairperson	Tetsuo Seki
Members	Kazuhiko Shimokobe Hitomi Takahashi

5. Compensation Committee

Chairperson	Hiroshi Okuda
Members	Yoshifumi Nishikawa Shokichi Takagi Takashi Nishioka Reiko Okutani

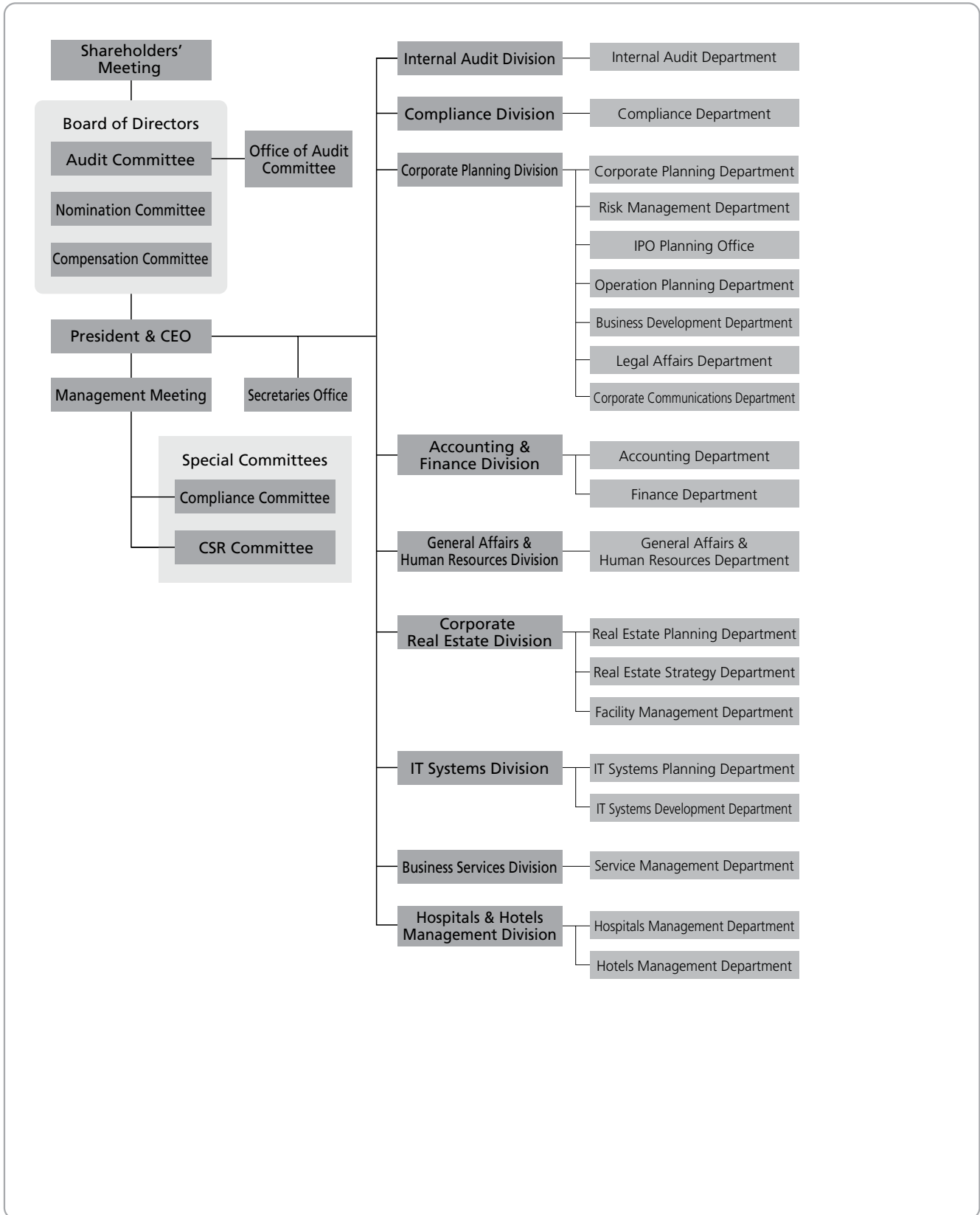
5 Directors Who Resigned in Fiscal 2007

Name	Position and responsibilities	Other information
Hiroaki Dan	Representative Director and Deputy President, Member of the Management Committee	Resigned as of September 30, 2007, accompanying the transition to the company with committees system
Norio Kitamura	Director, Member of the Management Committee	Resigned as of September 30, 2007, accompanying the transition to the company with committees system
Shigeo Kawa	Director, Member of the Management Committee	Resigned as of September 30, 2007, accompanying the transition to the company with committees system
Koji Furukawa	Director, Member of the Management Committee	Resigned as of September 30, 2007, accompanying the transition to the company with committees system
Josuke Shindo	Director, Member of the Management Committee	Resigned as of September 30, 2007, accompanying the transition to the company with committees system
Shunichiro Hirose	Full-time Company Auditor (Outside Officer)	Resigned as of September 30, 2007, accompanying the transition to the company with committees system
Mitsumasa Wada	Managing Executive Officer, Responsible for the IT Systems Division	Resigned as of December 31, 2007

Note: Position and responsibilities are as of the date of resignation.

6 Organization Chart

(As of July 1, 2008)



JAPAN POST GROUP
JAPAN POST HOLDINGS

JAPAN POST NETWORK

JAPAN POST SERVICE

JAPAN POST BANK

JAPAN POST INSURANCE

2. Principal Subsidiaries and Affiliate of Japan Post Holdings

(As of March 31, 2008)

Affiliation	Company name	Location	Issued capital (millions)	Main business	Date of establishment	Percentage ownership of voting rights
Consolidated subsidiaries	Japan Post Network Co., Ltd.	Chiyoda-ku, Tokyo	¥100,000	Post office business	October 1, 2007	100.0% (0.0%)
	Japan Post Service Co., Ltd.	Chiyoda-ku, Tokyo	¥100,000	Postal service business	October 1, 2007	100.0% (0.0%)
	Japan Post Bank Co., Ltd.	Chiyoda-ku, Tokyo	¥3,500,000	Banking business	September 1, 2006	100.0% (0.0%)
	Japan Post Insurance Co., Ltd.	Chiyoda-ku, Tokyo	¥500,000	Life insurance business	September 1, 2006	100.0% (0.0%)
	Japan Post Staff Co., Ltd.	Chiyoda-ku, Tokyo	¥90	Contract staffing service	July 3, 2007	100.0% (0.0%)
	Yusei Challenged Co., Ltd.	Setagaya-ku, Tokyo	¥5	Office cleaning	November 20, 2007	100.0% (0.0%)
	Post Office Business Support Co., Ltd.	Koto-ku, Tokyo	¥100	Receipt and forwarding of orders for catalog merchandise	September 11, 2007	100.0% (100.0%)
	JP Logi Service Co., Ltd.	Chuo-ku, Osaka	¥34	Preparation and posting of letters, parcels, and other mailed items	October 15, 1968	67.6% (67.6%)
	JP Biz Mail Co., Ltd.	Adachi-ku, Tokyo	¥100	Preparation and posting of postal items	February 1, 2006	58.5% (58.5%)
	DM Leading Co., Ltd.	Kawasaki-ku, Kawasaki, Kanagawa	¥50	Preparation and posting of postal items	November 1, 2004	100.0% (100.0%)
	JP Logistics Partners Co., Ltd.	Chuo-ku, Tokyo (Note 1)	¥100	Facilitation of sales campaigns	September 1, 2004	51.0% (51.0%)
	JP Media Direct Co., Ltd.	Minato-ku, Tokyo	¥250	Product development of direct media	February 29, 2008	51.0% (51.0%)
	Japan Post Transport Co., Ltd.	Chiyoda-ku, Tokyo	¥18,250	Preparation of items for truck cargo transportation	November 30, 2007	100.0% (100.0%)
	Nippon Mail Transportation Co., Ltd.	Minato-ku, Tokyo	¥715	Truck cargo transportation	November 28, 1942	88.0% (88.0%)
	Hokkaido Kosoku Yubin Yuso Co., Ltd.	Higashi-ku, Sapporo, Hokkaido	¥40	Truck cargo transportation	June 25, 1980	91.2% (91.2%)
	Tohoku Kosokudo Yubin Yuso Co., Ltd.	Tashiro-ku, Sendai, Miyagi	¥10	Truck cargo transportation	July 5, 1977	100.0% (100.0%)
	Chiba Yubin Yuso Co., Ltd.	Chuo-ku, Chiba, Chiba	¥24	Truck cargo transportation	December 17, 1971	100.0% (100.0%)
	Kanto Yubin Yuso Co., Ltd.	Meguro-ku, Tokyo	¥81	Truck cargo transportation	September 10, 1949	86.6% (86.6%)
	Tokyo Yubin Yuso Co., Ltd.	Koto-ku, Tokyo	¥45	Truck cargo transportation	September 4, 1987	100.0% (100.0%)
	Japan Express Logistics Corp.	Koto-ku, Tokyo	¥25	Truck cargo transportation	September 25, 1969	87.6% (87.6%)
Kanagawa Yubin Yuso Co., Ltd.	Kanagawa-ku, Yokohama, Kanagawa	¥30	Truck cargo transportation	April 28, 1982	100.0% (100.0%)	
Hokuriku Kosokudo Yubin Yuso Co., Ltd.	Kanazawa, Ishikawa	¥20	Truck cargo transportation	November 4, 1982	100.0% (100.0%)	
Tokai Kosoku Yubin Yuso Co., Ltd.	Kita-Nagoya, Aichi	¥35	Truck cargo transportation	August 21, 1985	100.0% (100.0%)	
Osaka Yubin Yuso Co., Ltd.	Kita-ku, Osaka, Osaka	¥50	Truck cargo transportation	July 29, 1972	100.0% (100.0%)	
Chugoku Kosoku Yubin Yuso Co., Ltd.	Asakita-ku, Hiroshima, Hiroshima	¥30	Truck cargo transportation	September 4, 1985	100.0% (100.0%)	
Shikoku Kosokudo Yubin Yuso Co., Ltd.	Takamatsu, Kagawa	¥35	Truck cargo transportation	November 20, 1992	100.0% (100.0%)	
Kyushu Kosoku Yubin Yuso Co., Ltd.	Hakata-ku, Fukuoka, Fukuoka	¥35	Truck cargo transportation	December 23, 1983	100.0% (100.0%)	
Affiliated company accounted for under the equity method	ANA & JP Express Co., Ltd.	Minato-ku, Tokyo	¥80	Air cargo transportation	February 1, 2006	33.3% (33.3%)

Notes: 1. JP Logistics Partners relocated its head office to Koto-ku, Tokyo, in May 2008.

2. The figures in parentheses in the column showing percentage ownership of voting rights indicate the percentage of indirect ownership through subsidiaries.

3. History of the Japan Post Group

April 1871	Modern postal service introduced
January 1875	Government mail offices and mail handling offices renamed post offices
	Postal money order service established
May 1875	Postal savings service inaugurated
December 1885	Ministry of Communications established
March 1906	Postal giro service inaugurated
October 1916	Postal life insurance services inaugurated
June 1949	The Ministry of Posts and Telecommunications established
January 2001	In accordance with the central government reform, Ministry of Public Management, Home Affairs, and Posts and Telecommunications (MPHPT) and Postal Service Agency established
April 2003	Japan Post established (and integrated with the Postal Life Insurance Welfare Corporation)
January 2006	Japan Post Holdings Co., Ltd., established
October 2007	Japan Post Group (Japan Post Holdings Co., Ltd., Japan Post Network Co., Ltd., Japan Post Service Co., Ltd., Japan Post Bank Co., Ltd., and Japan Post Insurance Co., Ltd.) established

JAPAN POST GROUP
JAPAN POST HOLDINGS

JAPAN POST NETWORK

JAPAN POST SERVICE

JAPAN POST BANK

JAPAN POST INSURANCE

4. Museums and Hospitals

1 Museums and Libraries

Locations

The Japan Post Group has museums and libraries relating to its activities, including Tei-Park (Communications Museum), which is Japan's only comprehensive museum related to postal services and telecommunications.

Name of facility	Address
Tei-Park (Communications Museum)	3-1, Otemachi 2-chome, Chiyoda-ku, Tokyo 100-0004
Maejima Memorial Museum	1317-1, Shinmeigae, Shimo Ikebe, Joetsu, Niigata 943-0119
Sakano Memorial Museum	1039-1, Kaidani, Okayama, Okayama 701-1144
Postal Museum in Meiji-mura (Ujiyamada Post Office)	Museum Meiji-mura, 1 Uchiyama, Inuyama, Aichi 484-0000
Atomic Bomb Information Museum, located in the former Outpatient Wing of the Japan Post Hiroshima Teishin Hospital	19-8, Higashi Hakushima-cho, Naka-ku, Hiroshima, Hiroshima 730-0004
Okinawa Postal Museum	3-8, Tsubokawa 3-chome, Naha, Okinawa 900-8799

Note: Persons wishing to visit the Atomic Bomb Information Museum located in the former Outpatient Wing of the Japan Post Hiroshima Teishin Hospital should contact the General Affairs section of the Japan Post Hiroshima Teishin Hospital.

2 Japan Post Teishin Hospitals

Locations

The Japan Post Group has established Japan Post Teishin Hospitals that serve as corporate hospitals for the group and contribute to the health of persons in the surrounding regions.

Name of facility	Location
Japan Post Sapporo Teishin Hospital	1-5-1, Kawazoe 14-jo, Minami-ku, Sapporo, Hokkaido 005-8798
Japan Post Sendai Teishin Hospital	5-1, Chuo 4-chome, Aoba-ku, Miyagi 980-8798
Japan Post Yokohama Teishin Hospital	13-10, Nishi Kanagawa 1-chome, Kanagawa-ku, Yokohama, Kanagawa 221-8798
Japan Post Tokyo Teishin Hospital	14-23, Fujimi 2-chome, Chiyoda-ku, Tokyo 102-8798
Japan Post Niigata Teishin Hospital	2-8, Yachiyo 2-chome, Chuo-ku, Niigata, Niigata 950-8798
Japan Post Toyama Teishin Hospital	2-29, Kashima-machi 2-chome, Toyama, Toyama 930-8798
Japan Post Nagoya Teishin Hospital	2-5, Izumi 2-chome, Higashi-ku, Nagoya, Aichi 461-8798
Japan Post Kyoto Teishin Hospital	Nishi Rokkakuchō 109, Rokkakutori Shinmachi Nishiiru, Nakagyo-ku, Kyoto, Kyoto 604-8798
Japan Post Osaka Kita Teishin Hospital	1-6, Nakazaki 1-chome, Kita-ku, Osaka, Osaka 530-8798
Japan Post Kobe Teishin Hospital	2-43, Kami-tsutsui Dori 6-chome, Chuo-ku, Kobe, Hyogo 651-8798
Japan Post Hiroshima Teishin Hospital	19-16, Higashi Hakushima-cho, Naka-ku, Hiroshima, Hiroshima 730-8798
Japan Post Tokushima Teishin Hospital	19-2, Iga-cho 3-chome, Tokushima, Tokushima 770-8798
Japan Post Fukuoka Teishin Hospital	6-11, Yakuin 2-chome, Chuo-ku, Fukuoka, Fukuoka 810-8798
Japan Post Kagoshima Teishin Hospital	12-1, Shimo Ishiki 1-chome, Kagoshima, Kagoshima 890-8798

5. Outline of Japan Post Network Co., Ltd.

1 Company Outline

Company name (in Japanese):	Yubinkyoku Kabushiki Kaisha
Company name:	JAPAN POST NETWORK Co., Ltd.
Head office location:	3-2, Kasumigaseki 1-chome, Chiyoda-ku, Tokyo 100-8798, Japan
Paid-in capital:	¥100 billion
Date of establishment:	October 1, 2007
Legal basis:	Established under the Japan Post Network Act (Law No. 100 of October 21, 2005)
Lines of business:	Postal counter operations for regular mail, parcels, and other items; sales of revenue stamps; bank agency services; intermediary services for financial products; solicitation of life and non-life insurance; real estate business; merchandise sales; and operations consigned by local government entities

2 Information on Shares

1. Number of Shares

Total shares issued	4,000,000
---------------------	-----------

2. Shareholders

Japan Post Holdings	Condition of holdings	
	Shares owned	Percentage of total issued
	4,000,000	100%

3 Number of Employees

116,107* (as of March 31, 2008)

* Number of regular employees. Includes employees seconded to Japan Post Network Co., Ltd. Excludes employees seconded to other companies and temporary employees.

4 List of Directors, Auditors, and Executive Officers

(As of July 1, 2008)

1. Directors

Chairman and CEO	Shigeo Kawa
President	Motoyuki Terasaka
Deputy President	Takamasa Mori
Director (Outside)	Hidekazu Inoue
(Also holds the position of Senior Adviser at Nippon Telegraph and Telephone East Corporation)	
Director (Outside)	Seisuke Ueshima
(Formerly held the position of Chairman of Yamaha Corporation)	
Director (Outside)	Yoshifumi Nishikawa
(Also holds the position of Director, Representative Executive Officer and President & CEO of Japan Post Holdings Co., Ltd.)	

2. Auditors

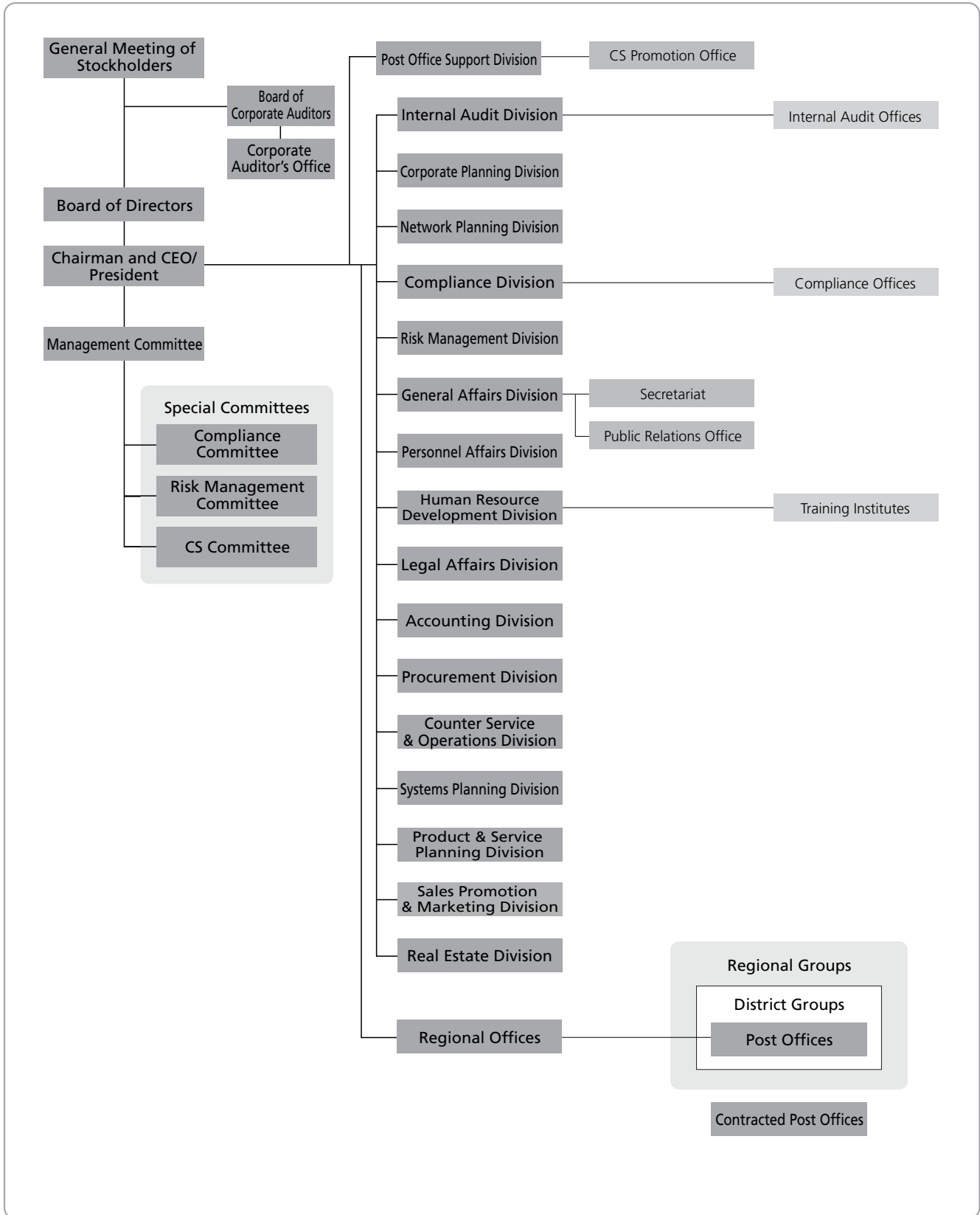
Haruki Inuma
Chikanori Saio
Kiyoshi Nishimura

3. Executive Officers

Senior Managing Executive Officer	Motoaki Kire	Executive Officer	Shin Ueda
Senior Managing Executive Officer	Kiyoteru Suzuki	Executive Officer	Atsuko Onodera
Senior Managing Executive Officer	Nobuyuki Hidaka	Executive Officer	Seiji Katsuno
Managing Executive Officer	Akira Iwasaki	Executive Officer	Kikuo Kushibiki
(Also holds the position of Managing Executive Officer of Japan Post Bank Co., Ltd.)		Executive Officer	Yoshikazu Kurita
Managing Executive Officer	Manabu Kawamura	Executive Officer	Kiyoshi Kobayashi
Managing Executive Officer	Hitoshi Shirakawa	Executive Officer	Hiroyuki Shimizu
Managing Executive Officer	Kinzo Nakazawa	(Also holds the position of Executive Officer of Japan Post Holdings Co., Ltd.)	
Executive Officer	Satoru Ito	Executive Officer	Toshihiro Tsuboi
(Also holds the position of Executive Officer of Japan Post Bank Co., Ltd.)		Executive Officer	Hideki Yanagihara

5 Organization Chart

(As of July 1, 2008)



JAPAN POST GROUP
JAPAN POST HOLDINGS

JAPAN POST NETWORK

JAPAN POST SERVICE

JAPAN POST BANK

JAPAN POST INSURANCE

6 Names and Locations of Regional Offices

Name of regional office	Location
Hokkaido	4-3, Kita 2-jo Nishi, Chuo-ku, Sapporo, Hokkaido 060-8797
Tohoku	1-34, Ichiban-cho 1-chome, Aoba-ku, Sendai, Miyagi 980-8797
Kanto	3-1, Shintoshin, Chuo-ku, Saitama, Saitama 330-9797
Tokyo	6-19, Azabudai 1-chome, Minato-ku, Tokyo 106-8797
Minami Kanto	1-1, Sakuragi-cho, Naka-ku, Yokohama, Kanagawa 231-8694
Shinetsu	801, Kurita, Nagano, Nagano 380-8797
Hokuriku	1-1, Owari-cho 1-chome, Kanazawa, Ishikawa 920-8797
Tokai	2-5, Marunouchi 3-chome, Naka-ku, Nagoya, Aichi 469-8797
Kinki	3-9, Kitahama Higashi, Chuo-ku, Osaka, Osaka 530-8797
Chugoku	19-8, Higashi Hakushima-cho, Naka-ku, Hiroshima, Hiroshima 730-8797
Shikoku	8-5, Miyata-cho, Matsuyama, Ehime 790-8797
Kyushu	1-1, Joto-machi, Kumamoto, Kumamoto 860-8797
Okinawa	26-29, Higashi-machi, Naha, Okinawa 900-8797

7 Training Institutes and Internal Audit Offices

Training Institutes: 10

Internal Audit Offices: 50

8 Post Offices by Prefecture

(As of March 31, 2008)

Prefecture	Post offices in service				Post offices out of service				Grand total
	Directly managed post offices		Contracted post offices	Total	Directly managed post offices		Contracted post offices	Total	
	Regular post offices	Post office branches			Regular post offices	Post office branches			
Hokkaido	1,215	0	261	1,476	0	0	39	39	1,515
Aomori	267	0	90	357	0	0	5	5	362
Iwate	308	0	116	424	0	0	8	8	432
Miyagi	363	0	89	452	0	0	4	4	456
Akita	273	0	125	398	0	0	3	3	401
Yamagata	289	0	106	395	0	0	3	3	398
Fukushima	432	0	108	540	0	0	8	8	548
Ibaraki	465	0	51	516	0	0	5	5	521
Tochigi	311	0	40	351	0	0	7	7	358
Gunma	302	0	38	340	0	0	0	0	340
Saitama	623	0	15	638	0	0	4	4	642
Chiba	692	0	30	722	0	0	4	4	726
Kanagawa	753	1	14	768	0	0	1	1	769
Yamanashi	201	0	58	259	0	0	8	8	267
Tokyo	1,499	3	7	1,509	8	0	1	9	1,518
Niigata	535	1	127	663	0	0	21	21	684
Nagano	445	0	180	625	0	0	35	35	660
Toyama	212	0	72	284	0	0	7	7	291
Ishikawa	254	1	68	323	0	0	4	4	327
Fukui	210	0	29	239	0	0	4	4	243
Gifu	355	1	83	439	0	0	19	19	458
Shizuoka	484	0	76	560	0	0	43	43	603
Aichi	835	5	69	909	0	0	26	26	935
Mie	372	0	77	449	0	0	18	18	467
Shiga	229	0	28	257	0	0	4	4	261
Kyoto	441	2	34	477	1	0	0	1	478
Osaka	1,092	6	29	1,127	0	0	2	2	1,129
Hyogo	840	3	118	961	0	0	5	5	966
Nara	241	0	77	318	0	0	5	5	323
Wakayama	263	0	54	317	0	0	0	0	317
Tottori	147	0	92	239	0	0	8	8	247
Shimane	257	0	111	368	0	0	11	11	379
Okayama	419	3	96	518	0	0	18	18	536
Hiroshima	584	1	107	692	0	0	14	14	706
Yamaguchi	354	2	56	412	0	0	9	9	421

Prefecture	Post offices in service				Post offices out of service				Grand total
	Directly managed post offices		Contracted post offices	Total	Directly managed post offices		Contracted post offices	Total	
	Regular post offices	Post office branches			Regular post offices	Post office branches			
Tokushima	203	0	28	231	0	0	8	8	239
Kagawa	189	0	31	220	0	0	7	7	227
Ehime	317	0	75	392	0	0	6	6	398
Kochi	229	0	88	317	0	0	6	6	323
Fukuoka	714	0	84	798	0	0	13	13	811
Saga	166	0	38	204	0	0	2	2	206
Nagasaki	311	0	133	444	0	0	5	5	449
Kumamoto	391	0	167	558	0	0	11	11	569
Oita	308	0	88	396	0	0	6	6	402
Miyazaki	196	0	109	305	0	0	5	5	310
Kagoshima	436	2	268	706	0	0	15	15	721
Okinawa	180	1	19	200	0	0	1	1	201
Nationwide total	20,202	32 (Note 1)	3,859	24,093	9	0	438 (Note 2)	447	24,540

Notes: 1. Of this total of 32, one post office branch was established temporarily while a contracted post office was closed provisionally as an emergency measure.

2. Services in areas where contracted post offices have been closed are as follows:

- Contracted post offices operate on consignment contracts.
- Post offices out of service are those post offices where customers have been informed that the office is being closed temporarily and counter services have been suspended.

Number of contracted post offices out of service	Number of instances where services are provided by personnel dispatched to the location	Number of instances where services are provided by mobile post offices
438	68	2

9 Outline of Subsidiaries

Company name	Post Office Business Support Co., Ltd.
Paid-in capital	¥100,000,000
Percentage of voting share held	100%
Principal lines of business	Processing of orders received and placed for catalog sales operations, provision of intermediary services for the sale of alcoholic beverages, customer relationship related operations, and quality management for products and services

6. Outline of Japan Post Service Co., Ltd.

1 Company Outline

Company name (in Japanese):	Yubin Jigyo Kabushiki Kaisha
Company name:	JAPAN POST SERVICE Co., Ltd.
Head office location:	3-2, Kasumigaseki 1-chome, Chiyoda-ku, Tokyo 100-8798, Japan
Paid-in capital:	¥100 billion
Date of establishment:	October 1, 2007
Legal basis:	Established under the Japan Post Service Act (Law No. 99 of October 21, 2005)
Lines of business:	<p>Under the stipulations of Article 3 of the Japan Post Service Act, Japan Post Service engages in the following activities.</p> <ol style="list-style-type: none">Activities specified under Article 3-1 of the Japan Post Service Act<ol style="list-style-type: none">Activities related to postal operations, the preparation of items for mailing, and the sending of such items, as specified in the regulations of the Postal Law, and other related activitiesActing on commission from the Japanese government, the sale of revenue stamps, employment insurance stamps, health insurance stamps, motor vehicle weight tax stamps, patent stamps, and registration stamps as well as other related activitiesActivities specified under Article 3-2 of the Japan Post Service Act<ol style="list-style-type: none">Issuance of New Year's lottery postcards stipulated in Article 1-1 of the Law Concerning New Year's Lottery Postcards, Etc.) and postcards with accompanying donations (charity donation postcards stipulated in Article 5-1 of the previously mentioned law) as well as other related activitiesActivities specified under Article 3-3 of the Japan Post Service Act<ol style="list-style-type: none">Domestic distribution and delivery businessAir cargo transport business related to international cargo transport and agency services for air cargo businessLogistics businessBusiness related to handling of catalog sales and other activities on a commissioned basisProvision of the <i>Himawari</i> Service that delivers everyday necessities to elderly persons living aloneBusiness activities commissioned by local governments and local public-sector corporationsBusiness activities commissioned by the NHK (Japan Broadcasting Corporation) <p>Other activities</p>

2 Information on Shares

1. Number of Shares

Total shares issued	4,000,000
---------------------	-----------

2. Shareholders

Japan Post Holdings	Condition of holdings	
	Shares owned	Percentage of total issued
	4,000,000	100%

3 Number of Employees

95,920* (as of March 31, 2008)

* Number of regular employees. Includes employees seconded to Japan Post Service Co., Ltd. Excludes employees seconded to other companies and temporary employees.

4 List of Directors, Auditors, and Executive Officers

(As of July 1, 2008)

1. Directors

Chairman and CEO	Norio Kitamura
President	Hiroaki Dan
Executive Vice President	Yoshiro Nakajyou
Director (Outside)	Yoshifumi Nishikawa
(Also holds the position of Director, Representative Executive Officer and President & CEO of Japan Post Holdings Co., Ltd.)	
Director (Outside)	Satoru Matsubara
(Also holds the position of professor at Toyo University)	
Director (Outside)	Masafumi Yokota
(Also holds the position of partner with Corporate Direction Co., Ltd.)	

2. Auditors

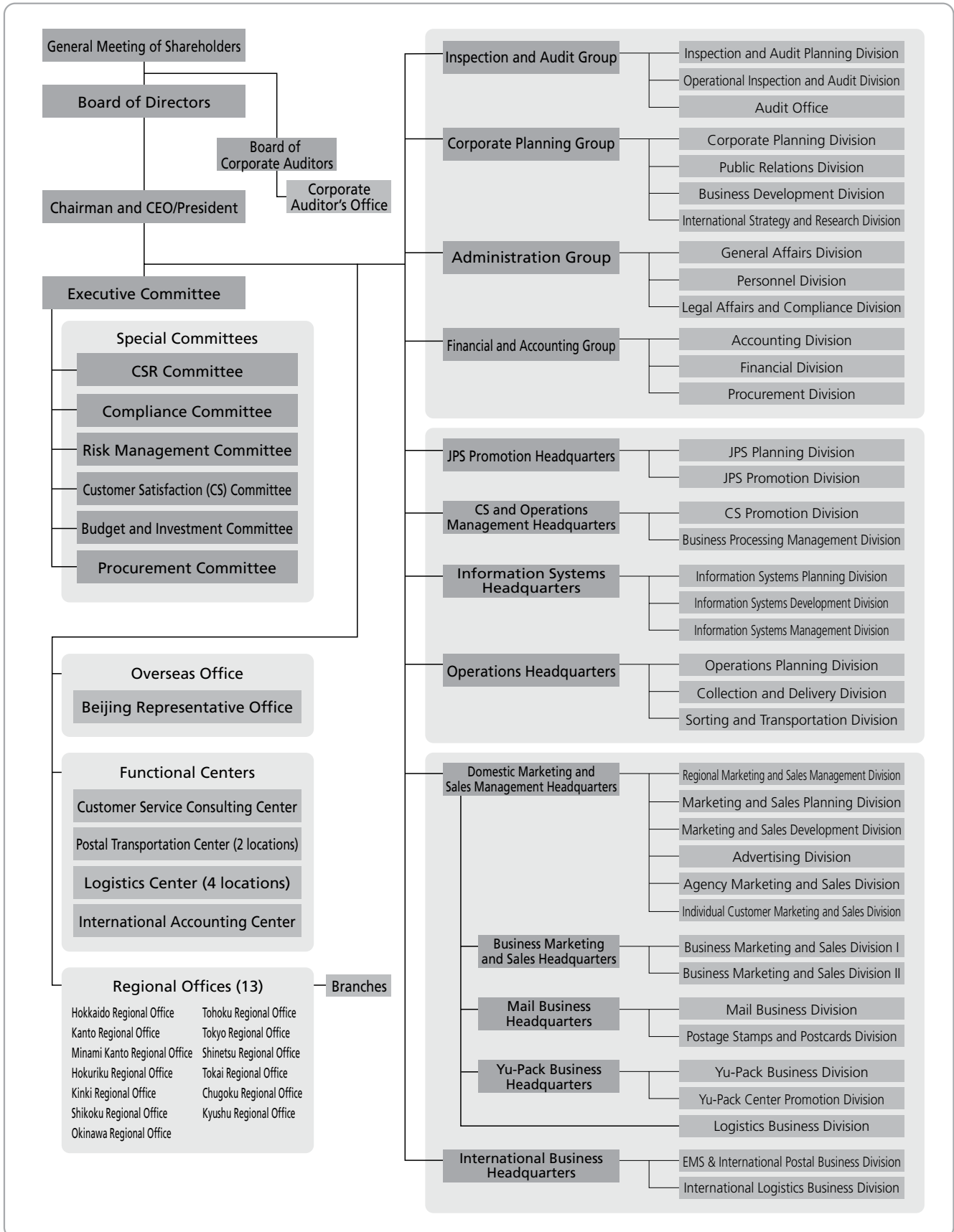
Katsuyuki Okada
Yoshio Haibara
Hisamitsu Gannyo

3. Executive Officers

First Executive Officer	Sakon Uda	Senior Executive Officer	Takao Miwa
First Executive Officer (Also holds the position of Managing Executive Officer at Japan Post Holdings Co., Ltd.)	Ikuo Shirakane	Executive Officer	Hatsumi Shimizu
First Executive Officer	Hiroshige Nagoya	Executive Officer	Kazuaki Daikaku
Senior Executive Officer (Also holds the position of Managing Executive Officer at Japan Post Holdings Co., Ltd.)	Toshiro Ito	Executive Officer	Naoki Nakashima
Senior Executive Officer	Tameyasu Tsukada	Executive Officer	Hideyuki Hokazono
		Executive Officer	Masaharu Matsumoto
		Executive Officer	Jyunichiro Miyazaki
		Executive Officer	Yoshio Yuzawa

5 Organization Chart

(As of July 1, 2008)



JAPAN POST GROUP
JAPAN POST HOLDINGS

JAPAN POST NETWORK

JAPAN POST SERVICE

JAPAN POST BANK

JAPAN POST INSURANCE

6 Number of Offices by Prefecture

(As of March 31, 2008)

Prefecture	Number of offices	Prefecture	Number of offices
Hokkaido	57	Shiga	12
Aomori	10	Kyoto	27
Iwate	15	Osaka	69
Miyagi	18	Hyogo	46
Akita	11	Nara	15
Yamagata	11	Wakayama	12
Fukushima	20	Tottori	4
Ibaraki	30	Shimane	7
Tochigi	17	Okayama	19
Gunma	16	Hiroshima	27
Saitama	51	Yamaguchi	18
Chiba	47	Tokushima	7
Kanagawa	55	Kagawa	10
Yamanashi	11	Ehime	16
Tokyo	90	Kochi	9
Niigata	27	Fukuoka	45
Nagano	24	Saga	8
Toyama	12	Nagasaki	12
Ishikawa	12	Kumamoto	16
Fukui	10	Oita	11
Gifu	19	Miyazaki	6
Shizuoka	31	Kagoshima	11
Aichi	62	Okinawa	14
Mie	16	Total	1,093

7 Number of Collection and Delivery Centers

Collection and delivery centers: 2,559

(As of March 31, 2008)

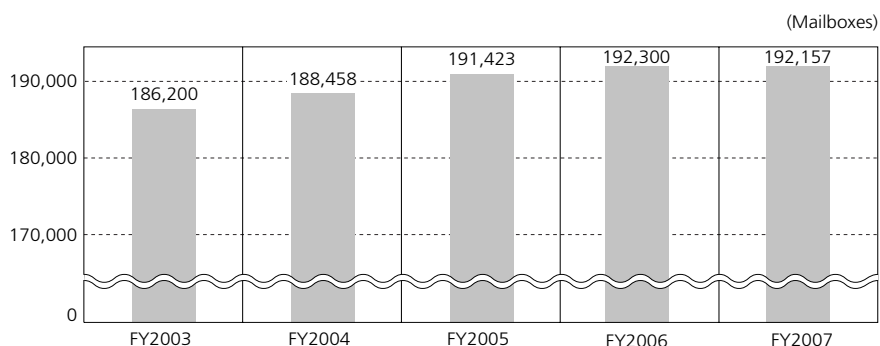
8 Subsidiaries and Affiliated Company

(As of March 31, 2008)

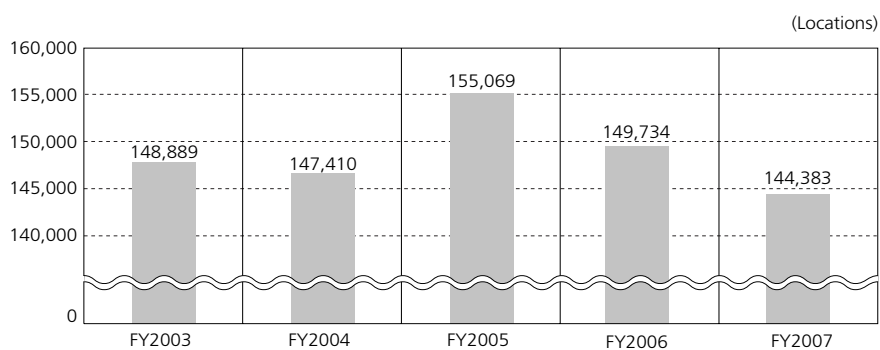
Affiliation	Company name	Location of principal office	Paid-in capital (millions)	Line of business	Date of establishment	Japan Post Service ownership	Ownership of voting shares
Consolidated subsidiaries	JP Logi Service Co., Ltd.	Japan Post Group Osaka Bldg., 3-9, Kitahama Higashi, Chuo-ku, Osaka 540-0031	¥34	Preparation and posting of postal items, parcels, and mail items	October 15, 1968	67.6%	67.6%
	JP Biz Mail Co., Ltd.	42-4, Senjuakebono-cho, Adachi-ku, Tokyo 120-0023	¥100	Preparation and posting of postal items	February 1, 2006	51.0%	58.5%
	DM Leading Co., Ltd.	Talkpia Kawasaki Bldg., 5-1, Fujisaki 3-chome, Kawasaki-ku, Kawasaki, Kanagawa 210-0804	¥50	Preparation and posting of postal items	November 1, 2004	0.0%	100.0%
	JP Logistics Partners Co., Ltd.*	Mitsukoshi Bldg., 4-1, Nihonbashi Muromachi 1-chome, Chuo-ku, Tokyo 103-8001	¥100	Facilitation of sales campaigns	September 1, 2004	51.0%	51.0%
	JP Media Direct Co., Ltd.	Toranomon NN Bldg. 5F, 21-17, Toranomon 1-chome, Minato-ku, Tokyo 105-0001	¥250	Product development of direct media	February 29, 2008	51.0%	51.0%
	Japan Post Transport Co., Ltd.	1-3, Uchisaiwai-cho 1-chome, Chiyoda-ku, Tokyo 100-0011	¥18,250	Preparation of items for truck cargo transportation	November 30, 2007	100.0%	100.0%
	Nippon Mail Transportation Co., Ltd.	16-2, Nishi-Shinbashi 1-chome, Minato-ku, Tokyo 105-0003	¥715	Truck cargo transportation	November 28, 1942	0.0%	91.2%
	Hokkaido Kosoku Yubin Yuso Co., Ltd.	2-3, Kita 9-jo Higashi 2-chome, Higashi-ku, Sapporo, Hokkaido 060-0909	¥40	Truck cargo transportation	June 25, 1980	0.0%	91.3%
	Tohoku Kosokudo Yubin Yuso Co., Ltd.	48-4, Hitokitahigashi, Moniwa, Taihaku-ku, Sendai, Miyagi 982-0251	¥10	Truck cargo transportation	July 5, 1977	0.0%	100.0%
	Chiba Yubin Yuso Co., Ltd.	14-37, Dezuminato, Chuo-ku, Chiba, Chiba 260-0023	¥24	Truck cargo transportation	December 17, 1971	0.0%	100.0%
	Kanto Yubin Yuso Co., Ltd.	18-17, Shimomeguro 5-chome, Meguro-ku, Tokyo 153-0064	¥81	Truck cargo transportation	September 10, 1949	0.0%	86.7%
	Tokyo Yubin Yuso Co., Ltd.	2-9, Shinkiba 1-chome, Koto-ku, Tokyo 136-0082	¥45	Truck cargo transportation	September 4, 1987	0.0%	100.0%
	Japan Express Logistics Corp.	43, Aomi 2-chome, Koto-ku, Tokyo 135-0064	¥25	Truck cargo transportation	September 25, 1969	0.0%	87.6%
	Kanagawa Yubin Yuso Co., Ltd.	1-20, Izuta-cho, Kanagawa-ku, Yokohama, Kanagawa 221-0032	¥30	Truck cargo transportation	April 28, 1982	0.0%	100.0%
	Hokuriku Kosokudo Yubin Yuso Co., Ltd.	33-1, Senkoji-machi Chi, Kanazawa, Ishikawa 920-0356	¥20	Truck cargo transportation	November 4, 1982	0.0%	100.0%
	Tokai Kosoku Yubin Yuso Co., Ltd.	24, Yamanokoshi gojo, Kita Nagoya, Aichi 481-0036	¥35	Truck cargo transportation	August 21, 1985	0.0%	100.0%
	Osaka Yubin Yuso Co., Ltd.	11-9, Oyodo Minami 3-chome, Kita-ku, Osaka, Osaka 531-0075	¥50	Truck cargo transportation	July 29, 1972	0.0%	100.0%
	Chugoku Kosoku Yubin Yuso Co., Ltd.	25-1, Ochiai 5-chome, Asakita-ku, Hiroshima, Hiroshima 739-1731	¥30	Truck cargo transportation	September 4, 1985	0.0%	100.0%
	Shikoku Kosokudo Yubin Yuso Co., Ltd.	748-1, Chokushi-cho, Takamatsu, Kagawa 761-8058	¥35	Truck cargo transportation	November 20, 1992	0.0%	100.0%
Kyushu Kosoku Yubin Yuso Co., Ltd.	21-3, Tsukiguma 6-chome, Hakata-ku, Fukuoka, Fukuoka 812-0858	¥35	Truck cargo transportation	December 23, 1983	0.0%	100.0%	
Affiliated company accounted for under the equity method	ANA & JP Express Co., Ltd.	5-2, Higashi Shinbashi 1-chome, Minato-ku, Tokyo 105-7133	¥80	Air cargo transportation	February 1, 2006	33.3%	33.3%

*JP Logistics Partners relocated its head office in May 2008. The new address is 4-23, Shinsuna 2-chome, Koto-ku, Tokyo.

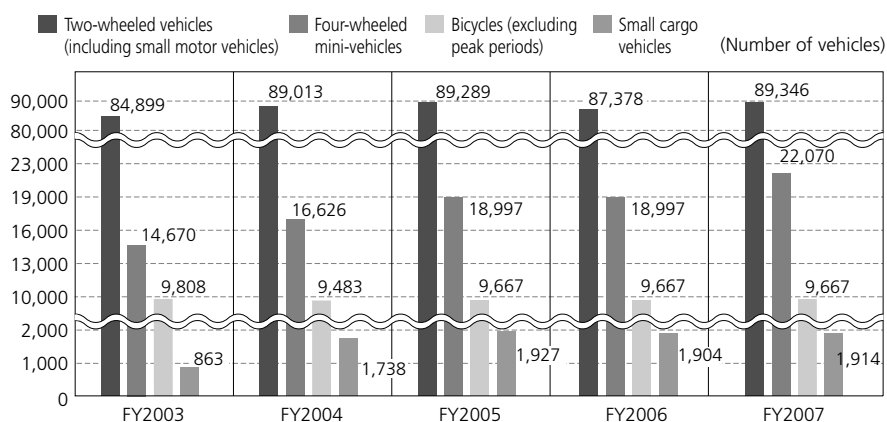
9 Number of Mailboxes



10 Number of Locations Selling Postage Stamps and Revenue Stamps



11 Number of Vehicles Owned



12 History of Japan's Postal Services Business

1871	Modern postal service introduced
	Issuance of postal stamps begun
1872	Nationwide implementation of the postal services system
1885	Ministry of Communications established
1887	The 〒 mark adopted as the logo for the Ministry of Communications
1892	Parcel post services begun
1949	The Ministry of Posts and Telecommunications established
	Issuance of New Year's lottery postcards begun

2001	Postal Service Agency established as part of realignment of government ministries
2003	Japan Post established
2006	ANA & JP Express Co., Ltd., established as a joint company
	JP Biz Mail Co., Ltd., established
	Sale of frame stamps with photos introduced
2007	Realignment of collection and delivery centers (from 2006 through 2007)
	Japan Post Group established
	Japan Post Service established
	First New Year's greeting postcards with donation feature for environmental carbon-offset purposes introduced
2008	Japan Post Group joins together to implement its "Spring Customer Appreciation Fair"

7. Outline of Japan Post Bank Co., Ltd.

1 Company Outline

Company name (in Japanese):	Kabushiki Kaisha Yucho Ginko
Company name:	JAPAN POST BANK Co., Ltd.
Head office location:	3-2, Kasumigaseki 1-chome, Chiyoda-ku, Tokyo 100-8798, Japan
Paid-in capital:	¥3,500 billion
Date of establishment:	September 1, 2006 (On October 1, 2007, the name was changed from Yucho Co., Ltd., to Japan Post Bank.)
Lines of business:	Banking
Financial institution code number:	9900

2 Information on Shares

1. Number of Shares

Total shares issued	150,000,000
---------------------	-------------

2. Shareholders

Japan Post Holdings	Condition of holdings	
	Shares owned	Percentage of total issued
	150,000,000	100%

3 Number of Employees

11,201* (as of March 31, 2008)

* Number of regular employees. Includes employees seconded to Japan Post Bank Co., Ltd. Excludes contract and temporary employees.

4 List of Directors and Executive Officers

(As of July 1, 2008)

1. Directors

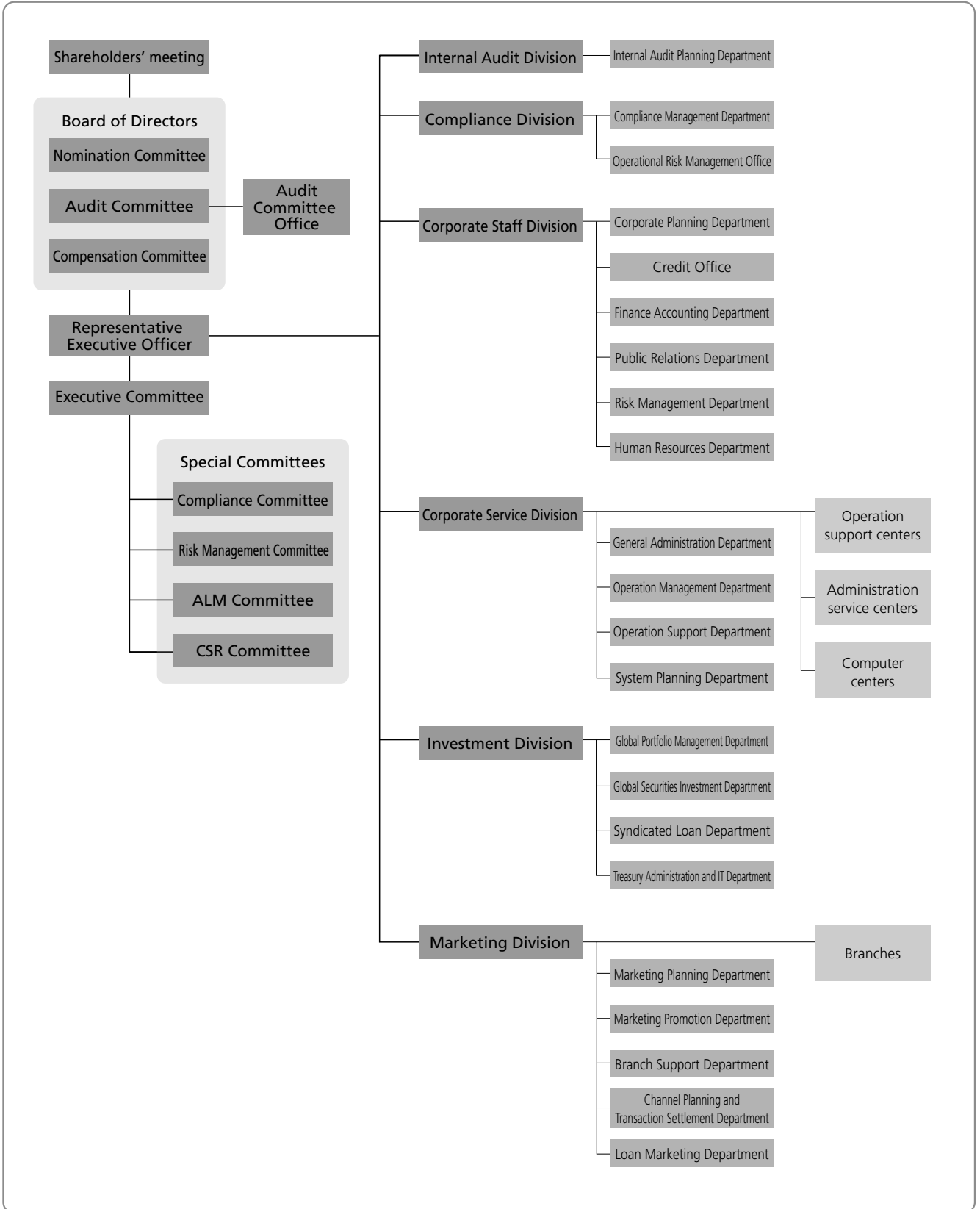
Chairman & CEO.....	Koji Furukawa
President & COO.....	Shokichi Takagi
(Also holds the position of Director, Representative Executive Officer and Deputy President of Japan Post Holdings Co., Ltd.)	
Director (Outside).....	Atsushi Kinebuchi
(Formerly held the position of Director and Executive Vice President of Nomura Asset Management Co., Ltd.)	
Director (Outside).....	Yoshifumi Nishikawa
(Also holds the position of Director, Representative Executive Officer and President & CEO of Japan Post Holdings Co., Ltd.)	
Director (Outside).....	Fumio Masada
(Formerly held the position of Director and Executive Vice President of Nippon Life Insurance Company)	
Director (Outside).....	Noboru Matsuda
(Also holds the position of Attorney-at-Law)	

2. Executive Officers

Executive Vice President	Tomohiro Yonezawa	Managing Executive Officer	Akira Uno
(Also holds the position of Senior Managing Executive Officer of Japan Post Holdings Co., Ltd.)		Executive Officer	Hiroichi Shishimi
Executive Vice President	Sumio Fukushima	Executive Officer	Osami Niihori
Senior Managing Executive Officer	Tomohisa Mase	Executive Officer	Naoto Misawa
Managing Executive Officer	Shyuichi Ikeda	Executive Officer	Satoru Ito
Managing Executive Officer	Riki Mukai	(Also holds the position of Executive Officer of Japan Post Network Co., Ltd.)	
Managing Executive Officer	Hiroshi Yamada	Executive Officer	Takashi Usuki
Managing Executive Officer	Satoshi Hoshino	Executive Officer	Kunihiko Amaha
Managing Executive Officer	Akira Iwasaki	Executive Officer	Susumu Tanaka
(Also holds the position of Managing Executive Officer of Japan Post Network Co., Ltd.)		Executive Officer	Yoko Makino
Managing Executive Officer	Toru Takahashi	Executive Officer	Masahiro Murashima

5 Organization Chart

(As of July 1, 2008)



6 Principal Business Locations

Principal business locations include the Head Office, 234 marketing offices, 49 operation support centers, 11 administration service centers, and 2 computer centers.

(As of March 31, 2008)

Name of branch	Location
Sapporo Branch	4-3, Kita Nijo Nishi, Chuo-ku, Sapporo, Hokkaido 060-0002
Sendai Branch	1-3-3, Ichibancho, Aoba-ku, Sendai, Miyagi 980-8711
Saitama Branch	7-1-12, Bessho, Minami-ku, Saitama, Saitama 336-8799
Head Office*	7-2, Marunouchi 2-chome, Chiyoda-ku, Tokyo 100-8799
Nagano Branch	1085-4, Minami Agata-machi, Nagano, Nagano 380-8799
Kanazawa Branch	1-1, Sanja-machi, Kanazawa, Ishikawa 920-8799
Nagoya Branch	3-1-10, Otsu, Naka-ku, Nagoya, Aichi 460-8799
Osaka Branch	2-4, Umeda 3-chome, Kita-ku, Osaka, Osaka 530-8799
Hiroshima Branch	6-36, Moto-machi, Naka-ku, Hiroshima, Hiroshima 730-0011
Matsuyama Branch	3-5-2, Sanban-cho, Matsuyama, Ehime 790-8799
Kumamoto Branch	1-1, Joto-machi, Kumamoto, Kumamoto 860-0846
Naha Branch	1-1-1, Kumoji, Naha, Okinawa 900-0015

*The Head Office moved to the following address as of July 22, 2008: Yusen Building, 3-2, Marunouchi 2-chome, Chiyoda-ku, Tokyo 100-8996.

7 Japan Post Bank Offices by Prefecture

(As of March 31, 2008)

Prefecture	Head Office/ Principal prefectural offices	Sub-offices	Offices of Japan Post Bank agents		Total
			Post offices*	Contracted post offices	
Hokkaido	1	4	1,210	264	1,479
Aomori	—	2	265	90	357
Iwate	—	1	307	117	425
Miyagi	1	1	361	89	452
Akita	—	1	273	125	399
Yamagata	—	1	288	105	394
Fukushima	—	3	430	108	541
Ibaraki	—	3	462	51	516
Tochigi	—	2	309	41	352
Gunma	—	3	299	38	340
Saitama	1	16	606	14	637
Chiba	—	13	679	30	722
Kanagawa	—	31	723	14	768
Yamanashi	—	1	200	57	258
Tokyo	1	40	1,464	7	1,512
Niigata	—	3	533	127	663
Nagano	1	2	441	179	623
Toyama	—	2	210	71	283
Ishikawa	1	—	253	68	322
Fukui	—	1	209	29	239
Gifu	—	2	354	82	438
Shizuoka	—	5	478	70	553
Aichi	1	13	826	70	910
Mie	—	2	370	77	449
Shiga	—	1	228	28	257
Kyoto	—	4	439	34	477
Osaka	1	23	1,073	29	1,126
Hyogo	—	12	830	119	961
Nara	—	2	239	76	317
Wakayama	—	1	262	54	317
Tottori	—	1	146	94	241
Shimane	—	1	256	111	368
Okayama	—	2	420	97	519
Hiroshima	1	3	581	108	693
Yamaguchi	—	3	353	55	411
Tokushima	—	1	202	28	231
Kagawa	—	2	187	32	221
Ehime	1	1	315	75	392
Kochi	—	1	228	89	318
Fukuoka	—	4	710	86	800
Saga	—	1	165	36	202
Nagasaki	—	2	309	133	444
Kumamoto	1	1	389	168	559
Oita	—	2	306	88	396
Miyazaki	—	1	195	109	305
Kagoshima	—	1	437	268	706
Okinawa	1	—	180	20	201
Nationwide total	12	222	20,000	3,860	24,094

* The number of post offices includes post office branches.

8 Number of ATMs by Prefecture

(As of March 31, 2008)

Prefecture	Number of ATMs
Hokkaido	1,676
Aomori	312
Iwate	341
Miyagi	489
Akita	313
Yamagata	318
Fukushima	497
Ibaraki	562
Tochigi	368
Gunma	351
Saitama	887
Chiba	932
Kanagawa	1,119
Yamanashi	215
Tokyo	2,518
Niigata	646
Nagano	533
Toyama	252
Ishikawa	315
Fukui	241
Gifu	409
Shizuoka	579
Aichi	1,126
Mie	424

Prefecture	Number of ATMs
Shiga	280
Kyoto	555
Osaka	1,513
Hyogo	1,094
Nara	291
Wakayama	295
Tottori	165
Shimane	287
Okayama	508
Hiroshima	776
Yamaguchi	433
Tokushima	236
Kagawa	246
Ehime	401
Kochi	271
Fukuoka	976
Saga	209
Nagasaki	366
Kumamoto	466
Oita	341
Miyazaki	226
Kagoshima	485
Okinawa	246
Nationwide total	26,089

9 History of Japan's Postal Savings and Japan Post Bank

January 1875	Postal money order service established
May 1875	Postal savings service inaugurated
December 1885	Ministry of Communications established
March 1906	Postal giro service inaugurated
June 1949	The Ministry of Posts and Telecommunications established
January 2001	Postal Service Agency established as part of realignment of government ministries
April 2003	Japan Post established
October 2005	Laws related to privatization of Japan's postal services passed
January 2006	Japan Post Holdings established as a company for preparation and planning for privatization
September 2006	Yucho Co., Ltd., established as a preparatory company for Japan Post Bank Co., Ltd.
September 2007	Implementation plan approved for transfer of operations of Japan Post
	Agreement reached between Sugura Bank Ltd. and Japan Post Holdings for an operational alliance in the field of consumer lending

October 2007	Japan Post Group established
	Name changed to Japan Post Bank Co., Ltd., and operations started
December 2007	First preferential interest rate campaign launched
	Approval for new business obtained (liberalization of investment products)
January 2008	ATMs available during the first three days of the New Year for the first time
February 2008	Campaign launched to attract pension funds (preferential interest rates)
March 2008	Japan Post Group joined together to implement its "Spring Customer Appreciation Fair"
April 2008	New business activities approved: Issuance of credit cards, acting as agent for sale of variable annuities for individuals, and offering intermediary services for consumer loans
	Agreement reached with Suruga Bank to launch an alliance in consumer lending centering around housing loans
May 2008	Issuance of JP BANK CARD begun
	Intermediary services for consumer loans launched
	Agent sales of variable insurance annuities begun
June 2008	Campaign for <i>TEIGAKU</i> deposits
June 2008	Preferential interest rate campaign launched

8. Outline of Japan Post Insurance Co., Ltd.

1 Company Outline

Company name (in Japanese):	Kabushiki Kaisha Kanpo Seimei Hoken
Company name:	JAPAN POST INSURANCE Co., Ltd.
Head office location:	3-2, Kasumigaseki 1-chome, Chiyoda-ku, Tokyo 100-8798, Japan
Paid-in capital:	¥500 billion
Date of establishment:	September 1, 2006 (The name of the company was changed from Kanpo Co., Ltd., to Japan Post Insurance Co., Ltd., on October 1, 2007.)
Lines of business:	Life insurance

2 Information on Shares

1. Number of Shares

Total shares issued	20,000,000
---------------------	------------

2. Shareholders

Japan Post Holdings	Condition of holdings	
	Shares owned	Percentage of total issued
	20,000,000	100%

3 Number of Employees

5,240* (as of March 31, 2008)

* Number of regular employees. Includes employees seconded to Japan Post Insurance Co., Ltd. Excludes contract and temporary employees.

4 List of Directors and Executive Officers

(As of July 1, 2008)

1. Directors

Director and Chairman	Josuke Shindo
Director and President	Izumi Yamashita
Director (Outside)	Toshiaki Katsushima
(Also holds the position of Attorney-at-Law)	
Director (Outside)	Hiroshi Koshida
(Formerly Chairman of the Japan Securities Dealers' Association)	
Director (Outside)	Masaharu Hino
(Also holds the position of Attorney-at-Law)	
Director (Outside)	Kunio Yokoyama
(Also holds the position of Senior Managing Executive Officer of Japan Post Holdings Co., Ltd.)	

2. Executive Officers

Deputy President	Kazuo Miyazaki	Executive Officer	Hiroshi Imoto
Senior Managing Executive Officer	Takao Ito	Executive Officer	Kazuhide Kinugawa
Senior Managing Executive Officer	Masaro Sugimoto	Executive Officer	Masanori Sato
Managing Executive Officer	Yukiharu Aoki	Executive Officer	Masahiko Sugimori
Managing Executive Officer	Masatoshi Shinoda	Executive Officer	Akihiro Takeuchi
Managing Executive Officer	Toshihisa Minakata	Executive Officer	Kiyotaka Fujimoto
Executive Officer	Shoji Awakura	Executive Officer	Masatoki Hosonuma
Executive Officer	Yoshifumi Ikeda	Executive Officer	Masaaki Horigane

5 Principal Branches

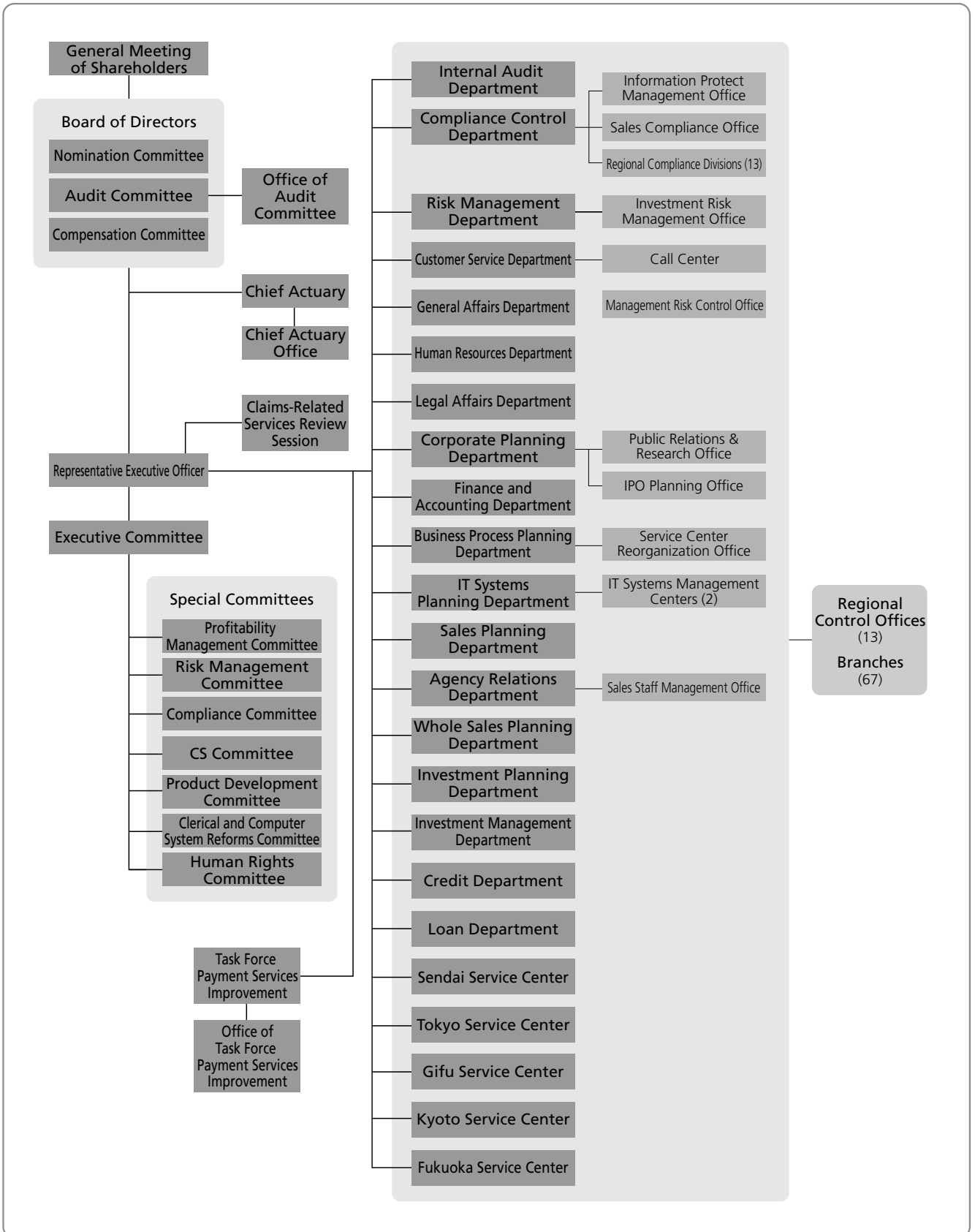
(As of July 1, 2008)

Name of branch	Location
Sapporo	2-1, Odori Higashi, Chuo-ku, Sapporo, Hokkaido 060-0041
Sendai	1-1-34, Ichibancho, Aoba-ku, Sendai, Miyagi 980-8797
Saitama	3-1, Shintoshin, Chuo-ku, Saitama, Saitama 330-9797
Yokohama	5-3, Nihon Odori, Naka-ku, Yokohama, Kanagawa 231-8799
Azabu	6-19, Azabudai 1-chome, Minato-ku, Tokyo 106-8799
Nagano	801, Kurita, Nagano, Nagano 380-8797
Kanazawa	1-1, Owari-cho 1-chome, Kanazawa, Ishikawa 920-8797
Nagoya	2-5, Marunouchi 3-chome, Naka-ku, Nagoya, Aichi 469-8797
Osaka	3-9, Kitahama Higashi, Chuo-ku, Osaka, Osaka 530-8797
Hiroshima	19-8, Higashi Hakushima-cho, Naka-ku, Hiroshima, Hiroshima 730-8797
Matsuyama	8-5, Miyata-machi, Matsuyama, Ehime 790-8797
Kumamoto	1-1, Joto-machi, Kumamoto, Kumamoto 860-8797
Naha	3-3-8, Tsubogawa, Naha, Okinawa 900-8799

Note: In addition to the above, there are 67 other branches.

6 Organization Chart

(As of July 1, 2008)



7 History of Japan's Postal Life Insurance and Japan Post Insurance

October 1916	Postal life insurance services inaugurated
October 1926	Postal life pension business inaugurated
June 1949	The Ministry of Posts and Telecommunications established
January 2001	Postal Service Agency established as part of realignment of government ministries
April 2003	Japan Post established
October 2005	Laws related to privatization of Japan's postal services passed
September 2006	Kanpo Co., Ltd., established

October 2007	Japan Post Group established
	"Kanpo Co., Ltd." changed to "Japan Post Insurance Co., Ltd."
	Japan Post Insurance operations commenced
	Became special sponsor of <i>Kanpo</i> nationwide "Postal Insurance All-Japan Friendship Walk"
October 2007	Japan Post Insurance Christmas gift campaign implemented
	New TV commercials aired
December 2007	Approval for new business obtained (liberalization of investment products)
February 2008	Partial alliance with Nippon Life Insurance Company concluded
March 2008	Japan Post Group joined together to implement its "Spring Customer Appreciation Fair"
April 2008	Accounts for making payments for postal insurance expanded to more financial institutions
	New business activities approved (commission sales of products to corporations, review of hospitalization benefits)
June 2008	Commission sales of products to corporations started
July 2008	Sales of Japan Post Insurance policies with hospitalization feature activated on the date of hospital entry
	Offering of insurance policies that enable a third party to request and receive payment begun
	Expanded subscription age limits for New Free Plan (endowment insurance).

