

# 3 About Japan Post

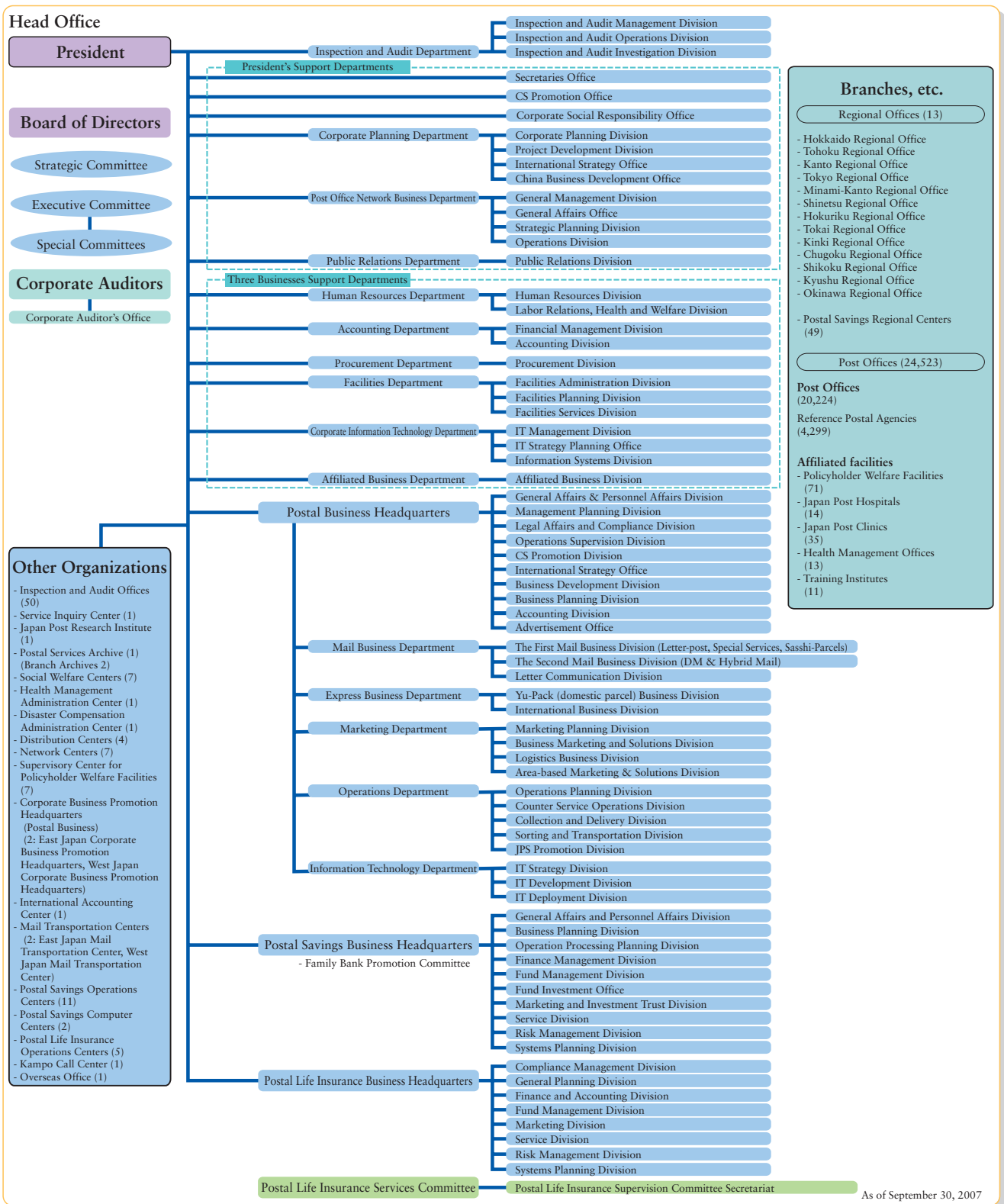


<b>1. Organization Overview .....</b>	<b>44</b>
(1) ORGANIZATION CHART .....	44
(2) NUMBER OF POST OFFICES .....	45
(3) EMPLOYEE CIRCUMSTANCES .....	45
(4) NUMBER OF MAILBOXES .....	45
(5) NUMBER OF ATMs INSTALLED .....	46
<b>2. Post Office Network Characteristics .....</b>	<b>46</b>
<b>3. Board of Directors .....</b>	<b>47</b>
<b>4. Content of Operations .....</b>	<b>48</b>
<b>5. Address of Head Office and Regional Offices ...</b>	<b>48</b>
<b>6. Number of Post Offices by Prefecture .....</b>	<b>49</b>
<b>7. History .....</b>	<b>50</b>
<b>8. Relationships with Subsidiaries .....</b>	<b>51</b>

# 3 About Japan Post

## 1. Organization Overview

### 1. Organization Chart



1 Highlights

2 Management Efforts

3 About Japan Post

4 Data

## 2. Number of Post Offices

Unit: post office

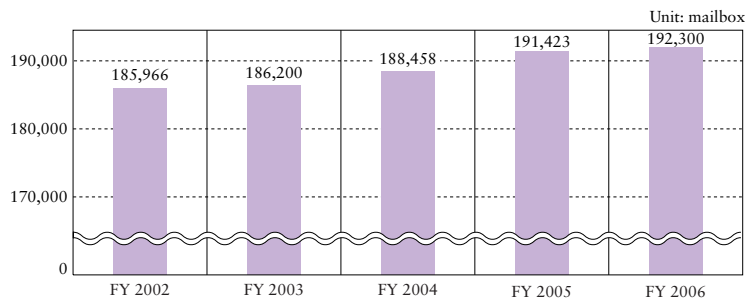
	Ordinary post offices			Special post offices			Postal agencies	Total
	Collection-and-delivery post offices	Non-collection-and-delivery post offices	Subtotal	Collection-and-delivery post offices	Non-collection-and-delivery post offices	Subtotal		
End of FY 2007	1,239	58	1,297	2,405	16,522	18,927	4,299	24,523
End of FY 2006	1,243	51	1,294	2,418	16,506	18,924	4,356	24,574
End of FY 2005	1,257	47	1,304	3,438	15,479	18,917	4,410	24,631
End of FY 2004	1,261	47	1,308	3,465	15,458	18,923	4,447	24,678
End of FY 2003	1,262	48	1,310	3,530	15,405	18,935	4,470	24,715

## 3. Employee Circumstances

Unit: person

	Japan Post total	Postal Services	Postal Savings	Postal Life Insurance	Other
End of FY 2007	253,814	109,709	55,373	40,295	48,437
End of FY 2006	254,177	109,193	55,415	40,405	49,164
End of FY 2005	256,572	110,579	55,410	41,248	49,335
End of FY 2004	261,937	114,158	56,316	41,994	49,469

## 4. Number of Mailboxes



1 Highlights

2 Management Efforts

3 About Japan Post

4 Data

## 5. Number of ATMs Installed

The first ATMs were installed in FY 1979, and by the end of FY 1992 every post office in Japan had an ATM (with the exception of a small number of post offices and postal agencies that could not install ATMs owing to lack of space).

Unit: ATM, location

	End of FY 2003	End of FY 2004	End of FY 2005	End of FY 2006	End of FY 2007
Total Number of ATMs	26,483	26,519	26,297	26,103	26,097
Off Premises ATMs	2,874	2,869	2,564	2,226	2,179

## 2. Post Office Network Characteristics

Post offices provide post, savings, and life insurance services to the public through the nationwide post office network. At the same time, they serve as focal points for the community where information can be obtained and advice provided on a variety of issues related to the requirements of everyday life.

### Maintaining Post Office Network Standards

With post offices established in all 1,827 cities, towns and villages in Japan (as of end of fiscal 2007), Japan Post offered a complete network of services across the country. (Total number of post offices as of the end of fiscal 2007: 24,523)

### Lifeline Function during Disasters

The Post Office Network, which reaches every corner of Japan, provided various services as needed by residents in times of disasters or other emergency-related situations. (Disaster services included free supplies of postcards, etc., emergency handling for lost postal savings passbooks or stamps, and immediate payment of insurance claims and loans.)

**Other lifeline services included handling of various government administrative services, sales of revenue stamps, payment of pension benefits, and other items essential for daily life.**

### Local-oriented Policies

Japan Post promoted policies to boost post office capabilities in response to local demands and expectations, strengthened the links between local communities and post offices, and raised the profile of post offices as the public institution closest to the people. (Acceptance of administrative work on behalf of local government authorities, the Himawari Service, participation in fire prevention agreements, etc.)

### Private-sector Utilization of the Post Office Network

Japan Post opened up the life infrastructure of the Post Office Network through promotion of tie-ups with private-sector services to improve customer convenience. (ATM service tie-ups with private-sector financial institutions, sales of compulsory liability insurance for motorcycles, etc.)

# 3. Board of Directors

## LIST OF BOARD OF DIRECTORS AS OF END OF FISCAL 2007

As of September 30, 2007

The number of the directors of fiscal 2007: 1 President, 2 Executive Deputy Presidents, 14 Managing Executive Officers (including 3 non-standing Managing Executive Officers), and 2 Corporate Auditors (including 1 non-standing auditor)

### President

NISHIKAWA Yoshifumi

### Executive Deputy Presidents

TAKAGI Shokichi

DAN Hiroaki

### Managing Executive Officers

(Standing)

YAMASHITA Izumi

SASAKI Hideharu

NISHIMURA Kiyoshi

MORI Takamasa

FUJIMOTO Eisuke

ITO Takao

OKADA Katsuyuki

MASE Tomohisa

YOSHIMOTO Kazuhiko

SAIO Chikanori

GANNYO Hisamitsu

(Non-standing)

SETO Yuuzo

MUNEKUNI Yoshihide

IKEO Kazuhito

### Corporate Auditors

TAKAHASHI Morikazu

INOUE Hidekazu

1 Highlights

2 Management Efforts

3 About Japan Post

4 Data

## 4. Content of Operations

As of September 30, 2007, Japan Post engaged in the following operations, based on regulations in Article 19 of the Japan Post Law (2002 Law No. 97).

- (1) Postal service operations based on regulations in the Postal Law
- (2) Postal savings operations based on regulations in the Postal Savings Law
- (3) Postal money order operations based on regulations in the Postal Money Order Law
- (4) Postal giro operations based on regulations in the Postal Transfer Law
- (5) Postal life insurance operations based on regulations in the Postal Life Insurance Law
- (6) Sells revenue stamps, consigned by the government
- (7) Pays retirement allowances and other government disbursements, consigned by the government
- (8) Issues New Year Lottery Postcards and Charity Donation postcards
- (9) Establishes and operates general announcements on postal savings and dissemination facilities
- (10) Handles placement of government bonds, etc.
- (11) Processes contributions to postal savings for International Voluntary Aid
- (12) Exchanges foreign currencies and purchases and sells travelers checks
- (13) Processes contributions to Disaster Voluntary Aid Account
- (14) Manages and controls defined contribution pension fund (limited to individual pension fund)
- (15) Establishes and operates postal life insurance policyholder welfare facilities
- (16) Handles treasury funds entrusted by the Bank of Japan
- (17) Federation of National Public Service Personnel Mutual Aid Association pension and lump sum payments
- (18) Administrative work involved in the sale of lottery tickets and payment to lottery winners
- (19) Handles operations concerning acceptance of applications for small-scale educational fund loans and grant of loans, consigned by National Life Finance Corporation and Okinawa Development Finance Corporation
- (20) Handles deposit and withdrawal operations for financial deposits, stipulated by the law related to the entrustment and consignment of acceptance and payment of postal savings, deposits, etc.
- (21) Handles operations provided for in Article 61, Paragraph 1 of the Defined Contribution Pension Law, including acceptance of application for personal pensions, consigned by the Federation of National Pension Fund Association
- (22) Handles operations of local government authorities conducted based on regulations in the law concerning handling of specified operations of local government authorities at post offices, and operations consigned by local government authorities
- (23) Handles applications for motorcycle liability insurance
- (24) Handles operations contributing to the convenience of regional residents, consigned by NTT East and West, successor to Kokusai Denden, specified in Article 5, Paragraph 1 of the supplementary rules to the Telecommunications Business Law, or NHK
- (25) Handles placement of beneficiary certificates of securities investment trusts

## 5. Address of Head Office and Regional Offices

■ As of September 30, 2007

	Zip code	Addresses
Headquarters	1 0 0 - 8 7 9 8	1-3-2, Kasumigaseki, Chiyoda-ku, Tokyo
Hokkaido Regional Office	0 6 0 - 8 7 9 7	4-3, Kitanijo-nishi, Chuo-ku, Sapporo, Hokkaido
Tohoku Regional Office	9 8 0 - 8 7 9 7	1-1-34, Ichiban-cho, Aoba-ku, Sendai, Miyagi Prefecture
Kanto Regional Office	3 3 0 - 9 7 9 7	3-1, Shintoshin, Chuo-ku, Saitama, Saitama Prefecture
Minami-Kanto Regional Office	2 2 0 - 8 7 9 7	1-1-3, Hiranuma, Nishi-ku, Yokohama, Kanagawa Prefecture
Tokyo Regional Office	1 0 6 - 8 7 9 7	1-6-19, Azabudai, Minato-ku, Tokyo
Shinetsu Regional Office	3 8 0 - 8 7 9 7	801, Kurita, Nagano, Nagano Prefecture
Hokuriku Regional Office	9 2 0 - 8 7 9 7	1-1-1, Owari-cho, Kanazawa, Ishikawa Prefecture
Tokai Regional Office	4 6 9 - 8 7 9 7	3-2-5, Marunouchi, Naka-ku, Nagoya, Aichi Prefecture
Kinki Regional Office	5 3 0 - 8 7 9 7	3-9, Kitahama-higashi, Chuo-ku, Osaka, Osaka Prefecture
Chugoku Regional Office	7 3 0 - 8 7 9 7	19-8, Higashishiroshima-cho, Naka-ku, Hiroshima, Hiroshima Prefecture
Shikoku Regional Office	7 9 0 - 8 7 9 7	8-5, Miyata-cho, Matsuyama, Ehime Prefecture
Kyushu Regional Office	8 6 0 - 8 7 9 7	1-1, Joto-cho, Kumamoto, Kumamoto Prefecture
Okinawa Regional Office	9 0 0 - 8 7 9 7	26-29, Higashi-cho, Naha, Okinawa Prefecture

# 6. Number of Post Offices by Prefecture

■ As of September 30, 2007

Unit: post office, branch office

Regional office	Prefecture	Ordinary post offices			Special post offices			Postal agencies	Total	Branch offices (separate tabulation)
		Collection-and-delivery post offices	Non-collection-and-delivery post offices	Subtotal	Collection-and-delivery post offices	Non-collection-and-delivery post offices	Subtotal			
Hokkaido	Hokkaido	72	2	74	213	928	1,141	300	1,515	—
Tohoku	Aomori	11	—	11	55	201	256	95	362	—
	Iwate	15	—	15	75	218	293	124	432	—
	Miyagi	18	3	21	67	276	343	93	457	—
	Akita	10	—	10	68	195	263	128	401	—
	Yamagata	13	—	13	55	221	276	109	398	—
	Fukushima	22	—	22	103	307	410	116	548	—
	Subtotal	89	3	92	423	1,418	1,841	665	2,598	—
Kanto	Ibaraki	37	—	37	49	379	428	56	521	—
	Tochigi	21	—	21	48	242	290	47	358	—
	Gunma	20	—	20	39	243	282	38	340	—
	Saitama	52	2	54	17	553	570	19	643	—
	Chiba	48	1	49	47	597	644	34	727	2
		Subtotal	178	3	181	200	2,014	2,214	194	2,589
Minami-Kanto	Kanagawa	57	3	60	6	687	693	16	769	—
	Yamanashi	15	—	15	10	176	186	66	267	—
		Subtotal	72	3	75	16	863	879	82	1,036
Tokyo	Tokyo	88	29	117	12	1,382	1,394	8	1,519	3
Shinetsu	Niigata	32	—	32	70	433	503	149	684	1
	Nagano	28	1	29	76	340	416	215	660	—
		Subtotal	60	1	61	146	773	919	364	1,344
Hokuriku	Toyama	20	—	20	18	174	192	79	291	—
	Ishikawa	11	—	11	34	210	244	72	327	1
	Fukui	10	—	10	32	168	200	33	243	—
		Subtotal	41	—	41	84	552	636	184	861
Tokai	Gifu	24	—	24	76	255	331	102	457	1
	Shizuoka	37	—	37	63	384	447	119	603	—
	Aichi	65	2	67	41	729	770	95	932	5
	Mie	16	—	16	55	301	356	95	467	—
		Subtotal	142	2	144	235	1,669	1,904	411	2,459
Kinki	Shiga	14	2	16	28	185	213	32	261	—
	Kyoto	28	—	28	21	393	414	34	476	2
	Osaka	69	8	77	5	1,012	1,017	31	1,125	6
	Hyogo	51	—	51	62	727	789	123	963	3
	Nara	16	—	16	35	190	225	82	323	—
	Wakayama	14	—	14	36	213	249	54	317	—
		Subtotal	192	10	202	187	2,720	2,907	356	3,465
Chugoku	Tottori	4	—	4	22	121	143	100	247	—
	Shimane	9	—	9	66	182	248	122	379	—
	Okayama	23	—	23	69	327	396	114	533	4
	Hiroshima	29	2	31	77	476	553	121	705	1
	Yamaguchi	20	—	20	54	280	334	65	419	2
		Subtotal	85	2	87	288	1,386	1,674	522	2,283
Shikoku	Tokushima	10	—	10	48	145	193	36	239	—
	Kagawa	15	—	15	17	157	174	38	227	—
	Ehime	18	—	18	42	257	299	81	398	—
	Kochi	14	1	15	30	184	214	94	323	—
		Subtotal	57	1	58	137	743	880	249	1,187
Kyushu	Fukuoka	54	1	55	39	621	660	97	812	—
	Saga	13	—	13	28	125	153	40	206	—
	Nagasaki	16	—	16	83	212	295	138	449	—
	Kumamoto	18	—	18	76	297	373	178	569	—
	Oita	16	—	16	58	234	292	94	402	—
	Miyazaki	11	—	11	54	131	185	114	310	—
	Kagoshima	22	—	22	105	309	414	283	719	2
		Subtotal	150	1	151	443	1,929	2,372	944	3,467
Okinawa	Okinawa	13	1	14	21	145	166	20	200	1
	Total	1,239	58	1,297	2,405	16,522	18,927	4,299	24,523	34

Note 1: Showa Base post offices and post offices on ships are not included.

Note 2: The number of post offices includes ones that are temporarily closed.

# 7. History

1 Highlights

2 Management Efforts

3 About Japan Post

4 Data

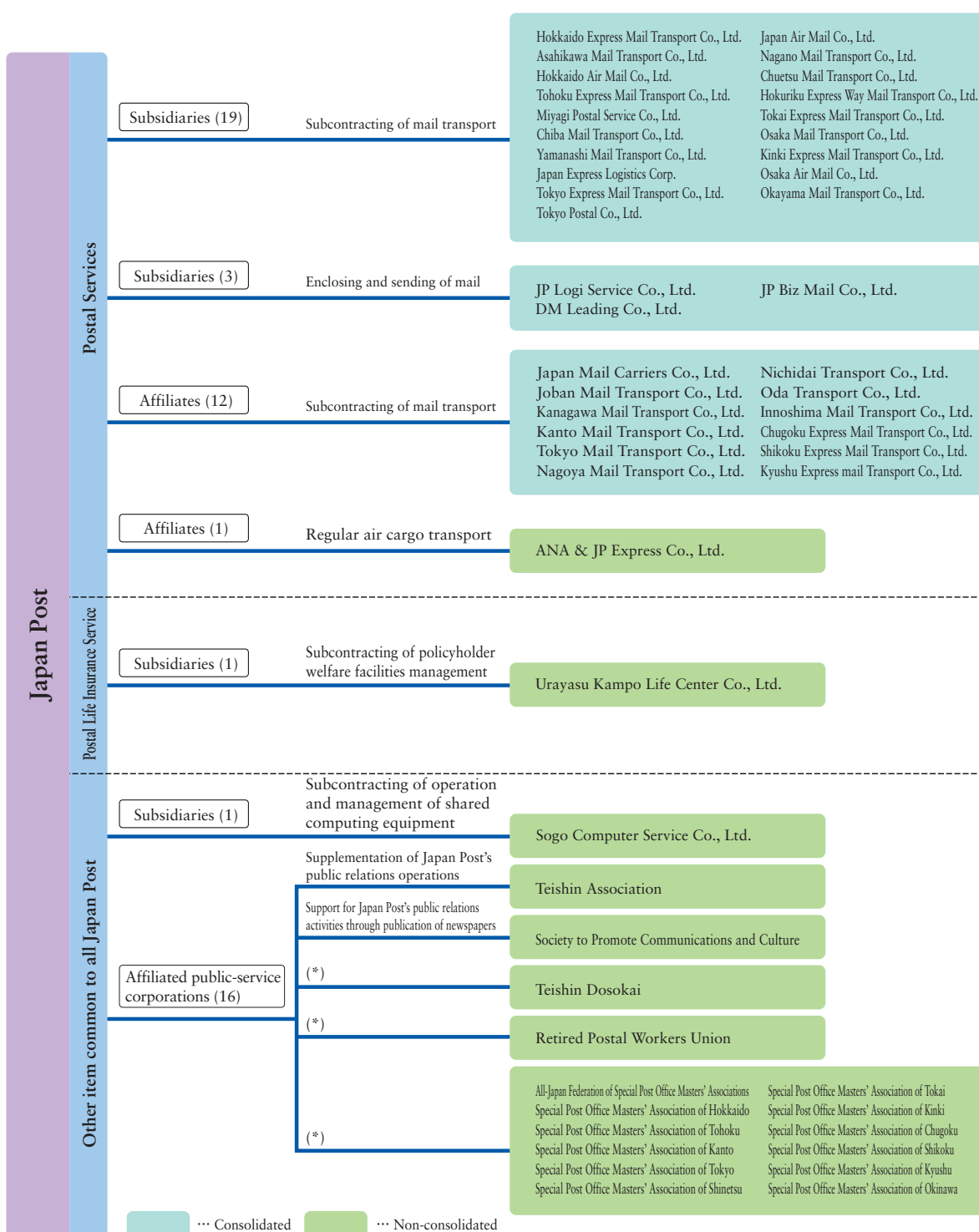
Date	Facts
April 20, 1871	Modern Postal Service Introduced
January 1, 1875	Government mail offices and mail handling offices renamed post offices
January 2, 1875	Postal Money Order Service established
May 2, 1875	Postal Savings Services inaugurated
December 22, 1885	Ministry of Communications established
March 1, 1906	Postal Giro Service inaugurated
October 1, 1916	Postal Life Insurance Services inaugurated
June 1, 1949	The Ministry of Posts and Telecommunications established
January 6, 2001	In accordance with the Central Government Reform, Ministry of Public Management, Home Affairs, and Posts and Telecommunications (MPHPT) and Postal Service Agency established
April 1, 2003	Japan Post established
October 1, 2007	Dissolution of Japan Post (Privatization and split-up) Succeeded by 5 Companies (JAPAN POST HOLDINGS Co., Ltd., JAPAN POST SERVICE Co., Ltd., JAPAN POST NETWORK Co., Ltd., JAPAN POST BANK Co., Ltd., and JAPAN POST INSURANCE Co., Ltd.) and the Management Organization for Postal Savings and Postal Life Insurance



# 8. Relationships with Subsidiaries

## Organizational Tree

As of end of September 2007



\* Companies where former Japan Post officers account for at least one third of the officers, and are affiliated public-service corporations.  
 Note 1: The Special Post Office Masters' Association of Hokuriku, which was an affiliated public-service corporation until the previous fiscal year, is not listed because starting in fiscal year under review the number of officers who have experience working in a public corporation dropped below one-third of the total number of officers.  
 Note 2: Urayasu Kampo Life Center is a directly capitalized (51% share) subsidiary of Japan Post. Although the operations of its associated facilities were partially outsourced, all of those facilities were abolished while Japan Post was still a public corporation, and the company was dissolved on January 25, 2008.  
 Note 3: Sogo Computer Service Co., Ltd. was dissolved on March 21, 2008.  
 Note 4: Japan Express Logistics Corp. acquired Tokyo Express Mail Transport Co., Ltd. on October 1, 2007.

- 1 Highlights
- 2 Management Efforts
- 3 About Japan Post
- 4 Data

