

4 About Japan Post

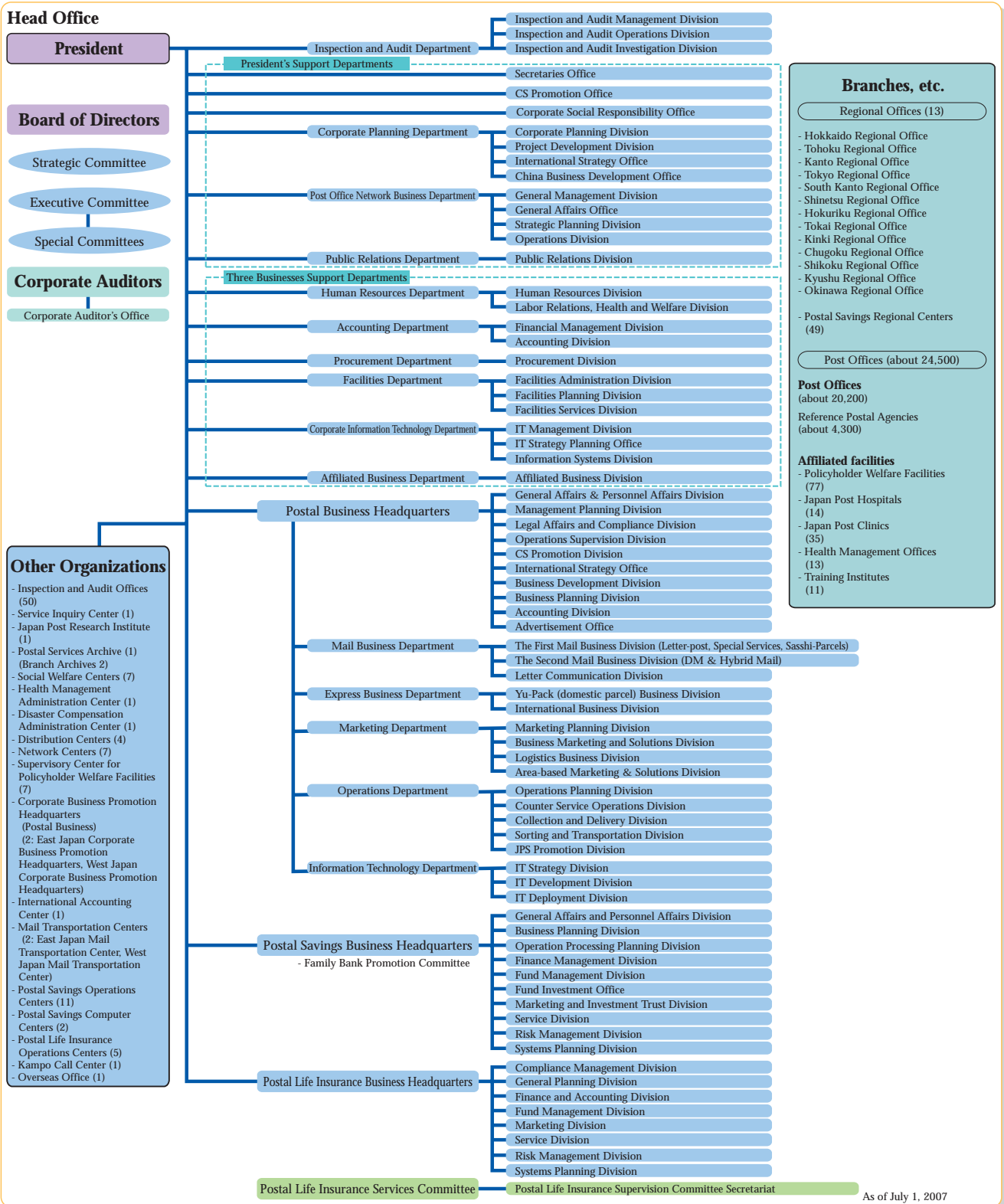


1. Organization Overview	94
(1) Organization Chart	94
(2) Number of Post Offices	95
(3) Employee Circumstances	95
(4) Number of Mail boxes	95
(5) Number of ATMs Installed	96
2. Post Office Network Characteristics	96
3. Board of Directors	97
4. Content of Operations	99
5. Address of Head Office and Regional Offices ...	99
6. Number of Post Offices by Prefecture ...	100
7. History	101
8. Relationships with Subsidiaries	102

4 About Japan Post

1. Organization Overview

1. Organization Chart



1 Highlights

2 Topics

3 Management Efforts

4 About Japan Post

5 Data

2. Number of Post Offices

Unit: post office

	Ordinary post offices			Special post offices			Postal agencies	Total
	Collection-and-delivery post offices	Non-collection-and-delivery post offices	Subtotal	Collection-and-delivery post offices	Non-collection-and-delivery post offices	Subtotal		
End of FY 2006	1,243	51	1,294	2,418	16,506	18,924	4,356	24,574
End of FY 2005	1,257	47	1,304	3,438	15,479	18,917	4,410	24,631
End of FY 2004	1,261	47	1,308	3,465	15,458	18,923	4,447	24,678
End of FY 2003	1,262	48	1,310	3,530	15,405	18,935	4,470	24,715

3. Employee Circumstances

Unit: person

	Japan Post total	Postal Services	Postal Savings	Postal Life Insurance	Other
End of FY 2006	254,177	109,193	55,415	40,405	49,164
End of FY 2005	256,572	110,579	55,410	41,248	49,335
End of FY 2004	261,937	114,158	56,316	41,994	49,469
End of FY 2003	271,368	120,255	57,877	42,871	50,365

(Reference: Breakdown of number of employees)

Unit: person

	Postal Services	Postal Savings	Postal Life Insurance
Employees working in offices	44,542	48,313	16,264
Employees working outside of offices	64,651	7,102	24,141

Note: Breakdown of the number of employees is as of March 31, 2007.

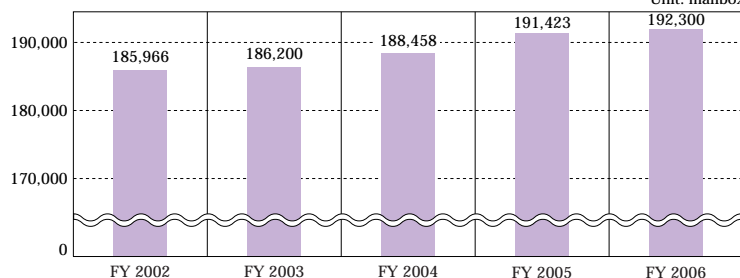
(Reference: Average annual income and other details, etc. of employees)

	Japan Post total			
	Postal Services	Postal Savings	Postal Life Insurance	
Average age	41.6 years old	42.1 years old	40.8 years old	41.4 years old
Average length of service	19.6 years	20.2 years	18.9 years	19.0 years
Average annual salary	About 6.2 million yen	About 6.5 million yen	About 6.0 million yen	About 5.8 million yen

Note: Average age and average length of service are as of October 2006.

4. Number of Mailboxes

Unit: mailbox



1 Highlights

2 Topics

3 Management Efforts

4 About Japan Post

5 Data

5. Number of ATMs Installed

The first ATMs were installed in FY 1979, and by the end of FY 1992 every post office in Japan had an ATM (with the exception of a small number of post offices and postal agencies that could not install ATMs owing to lack of space).

Unit: ATM, location

	FY 2002	FY 2003	FY 2004	FY 2005	FY 2006
Total Number of ATMs	26,123	26,483	26,519	26,297	26,103
Off Premises ATMs	2,817	2,874	2,869	2,564	2,226

2. Post Office Network Characteristics

Post offices provide post, savings and life insurance services to the public through the nationwide post office network. At the same time, they serve as focal points for the community where information can be obtained and advice provided on a variety of issues related to the requirements of everyday life.

Maintaining Post Office Network Standards

With post offices established in all 1,827 cities, towns and villages in Japan (as of end of fiscal 2006), Japan Post offers a complete network of services across the country. (Total number of post offices as of the end of fiscal 2006: 24,574)

Lifeline Function during Disasters

The Post Office Network, reaching every nook and cranny of Japan, provides various services as needed by residents in times of disasters or other emergency-related situations. (Disaster services can include free supplies of postcards, etc., emergency handling for lost postal savings passbooks or stamps, immediate payment of insurance claims and loans, etc.)

Other lifeline services include handling of various government administrative services, sales of revenue stamps, payment of pension benefits, and other items essential for daily life.

Local-oriented Policies

Japan Post is promoting policies to boost post office capabilities in response to local demands and expectations, strengthening the links between local communities and post offices, and raising the profile of post offices as the public institution closest to the people. (Acceptance of administrative work on behalf of local government authorities, the Himawari Service, participation in fire prevention activities, etc.)

Private-sector Utilization of the Post Office Network

Japan Post is opening up the life infrastructure of the Post Office Network through promotion of tie-ups with private-sector services to improve customer convenience. (ATM service tie-ups with private-sector financial institutions, sales of compulsory liability insurance for motorcycles, etc.)

Future utilization of the Post Office Network will include further expansion of life infrastructure services for local residents, and many other service possibilities in response to the needs of the local society and economy are now under study (the One Stop Convenience Office Concept).

3. Board of Directors

List of Board of Directors as of End of Fiscal 2006

As of March 31, 2007

The number of the directors of fiscal 2006: 1 President, 2 Executive Deputy Presidents, 16 Managing Executive Officers (including 4 non-standing Managing Executive Officers), and 3 Corporate Auditors (including 1 non-standing auditor)

President

IKUTA Masaharu

Executive Deputy Presidents

TAKAHASHI Toshihiro

DAN Hiroaki

Managing Executive Officers

(Standing)

YAMASHITA Izumi

SASAKI Hideharu

NISHIMURA Kiyoshi

MORI Takamasa

HONPO Yoshiaki

FUJIMOTO Eisuke

ITO Takao

OKADA Katsuyuki

MASE Tomohisa

YOSHIMOTO Kazuhiko

SAIO Chikanori

GANNYO Hisamitsu

(Non-standing)

SETO Yuzo

MUNEKUNI Yoshihide

IKEO Kazuhito

ISHIKURA Yoko

Corporate Auditors

(Standing)

SEKINE Yoshio

TAKAHASHI Morikazu

(Non-standing)

INOUE Hidekazu

* ISHIKURA Yoko, (non-standing) managing executive officer, retired from her office as of March 31, 2007.

1 Highlights

2 Topics

3 Management Efforts

4 About Japan Post

5 Data

Board of Directors Appointed on April 1, 2007

President

NISHIKAWA Yoshifumi (Newly appointed: President of JAPAN POST HOLDINGS Co., Ltd.)

Executive Deputy Presidents

TAKAGI Shokichi (Newly appointed: Executive Deputy President of JAPAN POST HOLDINGS Co., Ltd.)
DAN Hiroaki (Reappointed)

Managing Executive Officers

(Standing)

YAMASHITA Izumi (Reappointed)
SASAKI Hideharu (Reappointed)
NISHIMURA Kiyoshi (Reappointed)
HONPO Yoshiaki (Reappointed)
FUJIMOTO Eisuke (Reappointed)
ITO Takao (Reappointed)
OKADA Katsuyuki (Reappointed)
MASE Tomohisa (Reappointed)
SAIO Chikanori (Reappointed)

(Non-standing)

MUNEKUNI Yoshihide (Reappointed: Special advisor to Honda Motor Co., Ltd.)
IKEO Kazuhito (Reappointed: Professor of Faculty of Economics, Keio University)

Corporate Auditors

(Standing)

SEKINE Yoshio (Reappointed)
TAKAHASHI Morikazu (Reappointed)

(Non-standing)

INOUE Hidekazu (Reappointed: Advisor to Nippon Telegraph and Telephone East Corporation)

Director who retired on June 22, 2007

Managing Executive Officer

(Standing)

HONPO Yoshiaki

4. Content of Operations

Japan Post engages in the following operations, based on regulations in Article 19 of the Japan Post Law (2002 Law No. 97).

- (1) Postal service operations based on regulations in the Postal Law
- (2) Postal savings operations based on regulations in the Postal Savings Law
- (3) Postal money order operations based on regulations in the Postal Money Order Law
- (4) Postal giro operations based on regulations in the Postal Transfer Law
- (5) Postal life insurance operations based on regulations in the Postal Life Insurance Law
- (6) Sells revenue stamps, consigned by the government
- (7) Pays retirement allowances and other government disbursements, consigned by the government
- (8) Issues New Year Lottery Postcards and Charity Donation postcards
- (9) Establishes and operates general announcements on postal savings and dissemination facilities
- (10) Handles bidding for government bonds, etc.
- (11) Processes contributions to postal savings for International Voluntary Aid
- (12) Exchanges foreign currencies and purchases and sells travelers checks
- (13) Processes contributions to Disaster Voluntary Aid Account
- (14) Manages and controls defined contribution pension fund (limited to individual pension fund)
- (15) Establishes and operates postal life insurance policyholder welfare facilities
- (16) Handles treasury funds entrusted by the Bank of Japan
- (17) Federation of National Public Service Personnel Mutual Aid Association pension and lump sum payments
- (18) Administrative work involved in the sale of lottery tickets and payment to lottery winners
- (19) Handles operations concerning acceptance of applications for small-scale educational fund loans and grant of loans, consigned by National Life Finance Corporation and Okinawa Development Finance Corporation
- (20) Handles deposit and withdrawal operations for financial deposits, stipulated by the law related to the entrustment and consignment of acceptance and payment of postal savings, deposits, etc.
- (21) Handles operations provided for in Article 61, Paragraph 1 of the Defined Contribution Pension Law, including acceptance of application for personal pensions, consigned by the Federation of National Pension Fund Association
- (22) Handles operations of local government authorities conducted based on regulations in the law concerning handling of specified operations of local government authorities at post offices, and operations consigned by local government authorities
- (23) Handles applications for motorcycle liability insurance
- (24) Handles operations contributing to the convenience of regional residents, consigned by NTT East and West, successor to Kokusai Denden, specified in Article 5, Paragraph 1 of the supplementary rules to the Telecommunications Business Law, or NHK
- (25) Handles placement of beneficiary certificates of securities investment trusts

5. Address of Head Office and Regional Offices

As of March 31, 2007

	Zip code	Addresses
Headquarters	1 0 0 - 8 7 9 8	1-3-2, Kasumigaseki, Chiyoda-ku, Tokyo
Hokkaido Regional Office	0 6 0 - 8 7 9 7	4-3, Kitanijo-nishi, Chuo-ku, Sapporo, Hokkaido
Tohoku Regional Office	9 8 0 - 8 7 9 7	1-1-34, Ichiban-cho, Aoba-ku, Sendai, Miyagi Prefecture
Kanto Regional Office	3 3 0 - 9 7 9 7	3-1, Shintoshin, Chuo-ku, Saitama, Saitama Prefecture
South Kanto Regional Office	2 2 0 - 8 7 9 7	1-1-3, Hiranuma, Nishi-ku, Yokohama, Kanagawa Prefecture
Tokyo Regional Office	1 0 6 - 8 7 9 7	1-6-19, Azabudai, Minato-ku, Tokyo
Shinetsu Regional Office	3 8 0 - 8 7 9 7	801, Kurita, Nagano, Nagano Prefecture
Hokuriku Regional Office	9 2 0 - 8 7 9 7	1-1-1, Owari-cho, Kanazawa, Ishikawa Prefecture
Tokai Regional Office	4 6 9 - 8 7 9 7	3-2-5, Marunouchi, Naka-ku, Nagoya, Aichi Prefecture
Kinki Regional Office	5 3 0 - 8 7 9 7	3-9, Kitahama-higashi, Chuo-ku, Osaka, Osaka Prefecture
Chugoku Regional Office	7 3 0 - 8 7 9 7	19-8, Higashishiroshima-cho, Naka-ku, Hiroshima, Hiroshima Prefecture
Shikoku Regional Office	7 9 0 - 8 7 9 7	8-5, Miyata-cho, Matsuyama, Ehime Prefecture
Kyushu Regional Office	8 6 0 - 8 7 9 7	1-1, Joto-cho, Kumamoto, Kumamoto Prefecture
Okinawa Regional Office	9 0 0 - 8 7 9 7	26-29, Higashi-cho, Naha, Okinawa Prefecture

6. Number of Post Offices by Prefecture

As of March 31, 2007

Unit: post office, branch office

		Ordinary post offices			Special post offices			Postal agencies	Total	Branch offices (separate tabulation)
		Collection-and-delivery post offices	Non-collection-and-delivery post offices	Subtotal	Collection-and-delivery post offices	Non-collection-and-delivery post offices	Subtotal			
Hokkaido	Hokkaido	72	1	73	213	928	1,141	300	1,514	1
Tohoku	Aomori	11	—	11	55	201	256	95	362	—
	Iwate	15	—	15	75	218	293	131	439	—
	Miyagi	18	3	21	67	276	343	93	457	—
	Akita	10	—	10	68	195	263	128	401	—
	Yamagata	13	—	13	55	221	276	111	400	—
	Fukushima	22	—	22	103	307	410	121	553	—
	Subtotal		89	3	92	423	1,418	1,841	679	2,612
Kanto	Ibaraki	37	—	37	49	379	428	57	522	—
	Tochigi	21	—	21	48	242	290	48	359	—
	Gunma	20	—	20	39	243	282	38	340	—
	Saitama	52	2	54	17	553	570	19	643	—
	Chiba	48	1	49	47	597	644	34	727	2
	Subtotal		178	3	181	200	2,014	2,214	196	2,591
Minami-Kanto	Kanagawa	57	3	60	6	688	694	17	771	—
	Yamanashi	15	—	15	10	176	186	68	269	—
	Subtotal		72	3	75	16	864	880	85	1,040
Tokyo	Tokyo	88	26	114	12	1,383	1,395	9	1,518	7
Shinetsu	Niigata	32	—	32	70	433	503	154	689	1
	Nagano	28	—	28	76	340	416	225	669	1
	Subtotal		60	—	60	146	773	919	379	1,358
Hokuriku	Toyama	20	—	20	18	174	192	85	297	—
	Ishikawa	11	—	11	34	210	244	83	338	1
	Fukui	10	—	10	32	168	200	36	246	—
	Subtotal		41	—	41	84	552	636	204	881
Tokai	Gifu	24	—	24	76	255	331	102	457	1
	Shizuoka	37	—	37	63	384	447	119	603	—
	Aichi	65	3	68	41	728	769	95	932	5
	Mie	16	—	16	55	301	356	95	467	—
	Subtotal		142	3	145	235	1,668	1,903	411	2,459
Kinki	Shiga	14	—	14	28	185	213	32	259	2
	Kyoto	28	—	28	21	393	414	34	476	2
	Osaka	69	7	76	5	1,012	1,017	31	1,124	7
	Hyogo	51	—	51	62	727	789	125	965	2
	Nara	16	—	16	35	190	225	82	323	—
	Wakayama	14	—	14	36	213	249	54	317	—
	Subtotal		192	7	199	187	2,720	2,907	358	3,464
Chugoku	Tottori	4	—	4	22	121	143	100	247	—
	Shimane	9	—	9	66	182	248	122	379	—
	Okayama	23	—	23	69	327	396	114	533	2
	Hiroshima	29	2	31	77	476	553	121	705	1
	Yamaguchi	20	—	20	54	280	334	65	419	2
	Subtotal		85	2	87	288	1,386	1,674	522	2,283
Shikoku	Tokushima	10	—	10	48	145	193	36	239	—
	Kagawa	15	—	15	17	157	174	38	227	—
	Ehime	18	—	18	42	257	299	81	398	—
	Kochi	14	1	15	30	184	214	94	323	—
	Subtotal		57	1	58	137	743	880	249	1,187
Kyushu	Fukuoka	58	1	59	50	606	656	97	812	—
	Saga	13	—	13	28	125	153	40	206	—
	Nagasaki	16	—	16	85	210	295	138	449	—
	Kumamoto	18	—	18	76	297	373	178	569	—
	Oita	16	—	16	58	234	292	94	402	—
	Miyazaki	11	—	11	54	131	185	114	310	—
	Kagoshima	22	—	22	105	309	414	283	719	2
	Subtotal		154	1	155	456	1,912	2,368	944	3,467
Okinawa	Okinawa	13	1	14	21	145	166	20	200	1
Total		1,243	51	1,294	2,418	16,506	18,924	4,356	24,574	40

Note 1: Showa Base post offices and post offices on ships are not included.

Note 2: The number of post offices includes ones that are temporarily closed.

(Reference: Change in the number of post offices)

	End of FY 2002	End of FY 2003	End of FY 2004	End of FY 2005	End of FY 2006
Ordinary post offices	1,310	1,310	1,308	1,304	1,294
Collection-and-delivery post offices	1,260	1,262	1,261	1,257	1,243
Non-collection-and-delivery post offices	50	48	47	47	51
Special post offices	18,941	18,935	18,923	18,917	18,924
Collection-and-delivery post offices	3,563	3,530	3,465	3,438	2,418
Non-collection-and-delivery post offices	15,378	15,405	15,458	15,479	16,506
Postal agencies	4,501	4,470	4,447	4,410	4,356
Total	24,752	24,715	24,678	24,631	24,574

Note 1: Showa Base post offices and post offices on ships are not included.

Note 2: The number of post offices includes ones that are temporarily closed.

7. History

Date	Facts
April 20, 1871	Modern Postal Service Introduced
January 1, 1875	Government mail offices and mail handling offices renamed post offices
January 2, 1875	Postal Money Order Service established
May 2, 1875	Postal Savings Services inaugurated
December 22, 1885	Ministry of Communications established
March 1, 1906	Postal Giro Service inaugurated
October 1, 1916	Postal Life Insurance Services inaugurated
June 1, 1949	The Ministry of Posts and Telecommunications established
January 6, 2001	In accordance with the Central Government Reform, Ministry of Public Management, Home Affairs, and Posts and Telecommunications (MPHPT) and Postal Service Agency established
April 1, 2003	Japan Post established

1 Highlights

2 Topics

3 Management Efforts

4 About Japan Post

5 Data

8. Relationships with Subsidiaries

Organizational Tree

As of end of March 2007

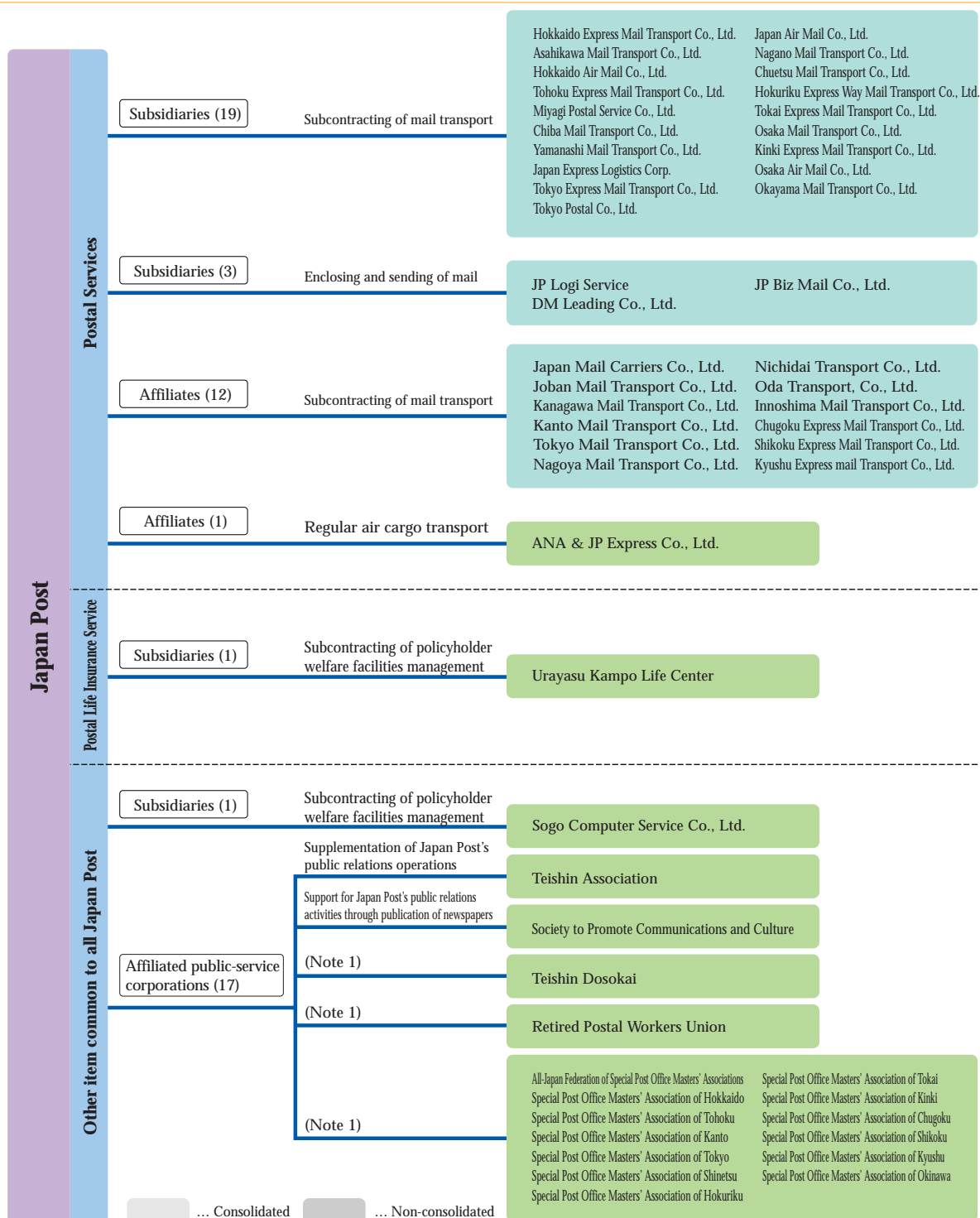
1 Highlights

2 Topics

3 Management Efforts

4 About Japan Post

5 Data



Note 1: Companies where former Japan Post officers account for at least one third of the officers, and are affiliated public-service corporations.

Note 2: Association of Pen Friend Clubs of Japan which was an affiliated public-service corporation of Japan Post until the previous fiscal year, no longer fall under the category of affiliated public-service corporation this year and they are not listed in the chart above because Association of Pen Friend Clubs of Japan was dissolved in March 2006.

Note 3: Japan Direct Mail Association, which was an affiliated public-service corporation until the previous fiscal year, no longer falls under the category of affiliated public-service corporations this year and is not listed in the chart above, because business transactions with Japan Post were decreased and we do no longer have any practical influence on this public-service corporation.

Note 4: Research Institute of Telecommunications and Economics, which was an affiliated public-service corporation, no longer falls under the category of affiliated public-service corporations this year and is not listed in the chart above, because its director who was concurrently Japan Post's personnel was retired and we do no longer have any practical influence on this public-service corporation.